

Community Resilience Scorecard

Port Douglas, Craiglie, Oak Beach and Wangetti



**LOCAL DISASTER
MANAGEMENT GROUP**

Disaster Management is everybody's business

We are on the world stage. Our communities draw in new residents and tourists from across Australia and the globe. Raising risk awareness is an ongoing activity, to ensure we remain vigilant to our exposure to cyclones, flooding and coastal hazards. We are the gateway to Douglas Shire. Disruptions can have cascading impacts to other communities.

RISK STATEMENT

These communities are the entrance to our region and together are exposed to all natural hazards with unique vulnerabilities. The renown tourist attraction of Port Douglas is at significant risk of cyclone and coastal hazards. Coastal erosion, storm tide and permanent inundation risks are evident from both Four Mile Beach and the Dickson Inlet as well as further south at Wangetti and Oak Beach.

The newer buildings of Port Douglas and Craiglie are better able to withstand severe wind and storms. In contrast, older homes on steep slopes create further risk in severe wind and intense rainfall at Wangetti and Oak Beach. High numbers of visitors and diverse languages in the summer present challenges to circulate information, and many have no experience with severe weather events.

Landslides have occurred on Flagstaff Hill, but should one occur on the Captain Cook Highway, this can significantly disrupt the tourism industry and all communities from Wangetti north. Any damage to the environment impacts the tourism industry and severe weather can interrupt enterprise reliant on access to Trinity Bay and the Great Barrier Reef.

Heatwave is riskier in urban areas where it can stop people from moving about.



Artwork by Natasha Bellero

RISK STATEMENT (CONT.)

Older people are especially vulnerable to heatwaves and visitors may have limited awareness of heat stress prevention measures.

Bushfire risk is limited in these communities however south and west of Craiglie, risk is intensified on the steeper, vegetated slopes. The vegetation around Oak Beach and Wangetti is different to other parts of the Shire. It is much drier, which increases bushfire risk. Heatwaves can further dry the vegetation.

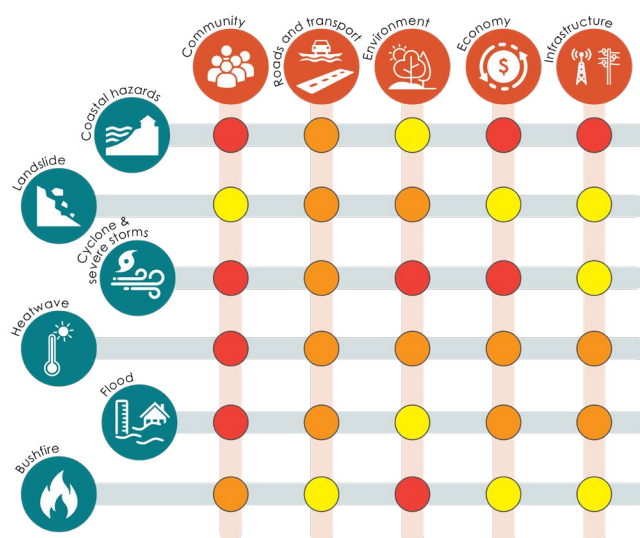
Isolation is a risk multiplier for all hazards; however, it elevates landslide consequences to significant where the community experiences further isolation. Landslide can occur because of intense rainfall and severe storm on steep slopes west of the Captain Cook Highway.



Port Douglas foreshore



**Risk Summary
Port Douglas
and Craiglie**



Minor

The risk is limited. Consequences are isolated and able to be dealt with locally.

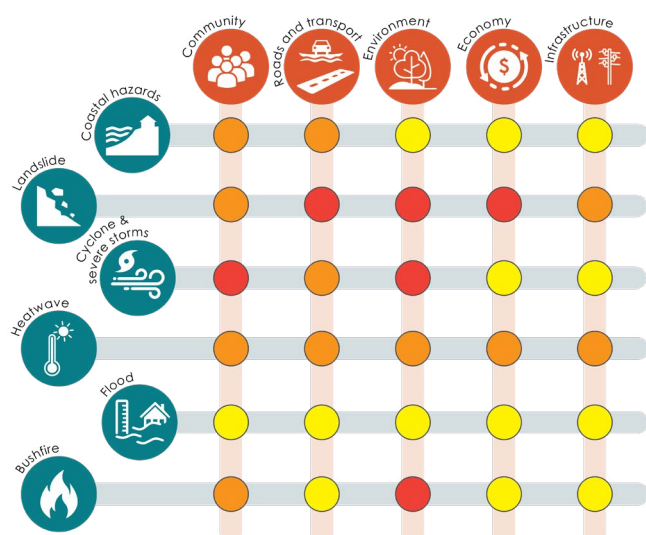
Moderate

The risk is apparent. Consequences are unlikely to interrupt a community's social, environmental and/or economic cycles, but may require regional recovery assistance.

Significant

The risk is prevalent. Consequences can impact community cycles.

Macrossan Street, Port Douglas



Minor

The risk is limited. Consequences are isolated and able to be dealt with locally.

Moderate

The risk is apparent. Consequences are unlikely to interrupt a community's social, environmental and/or economic cycles, but may require regional recovery assistance.

Significant

The risk is prevalent. Consequences can impact community cycles.



**Risk Summary
Oak Beach
and Wangetti**

Grants Creek at Oak Beach

Hazard mapping

- High storm tide inundation area
- Medium storm tide inundation area
- Flood hazard area (Queensland floodplain assessment overlay)

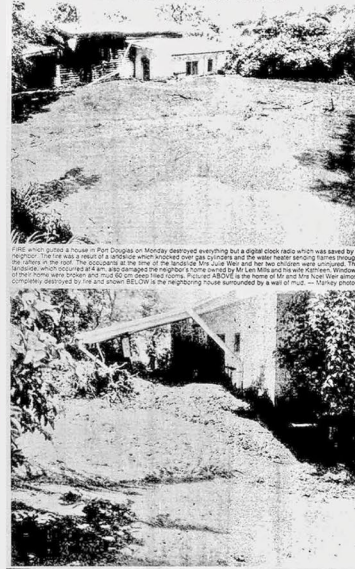
Basemap

- Rivers and ocean
- Natural environment and conservation areas

Port Douglas CBD inset below

There is a history of landslides on Flagstaff Hill.

Mud slide wreaks havoc



'Windows of their home were broken and mud 60 cm deep filled rooms' Cairns Post 1979

King tides can cause inundation of low-lying areas surrounding the marina. Inundation can be more significant during a storm surge.

Port Douglas Fire & Rescue Station and Ambulance Station.



Captain Cook Hwy inundation trouble spot, near Paddy's Airpark.



Captain Cook Hwy inundation trouble spot, near Crees Creek.



Many parts of Port Douglas are low-lying and at risk of inundation during a storm surge event.



Ozcare Port Douglas Aged Care Facility is within the storm surge zone.



Douglas Shire Historical Society



Port Douglas Police Station



Port Douglas CBD inset



Flagstaff Hill walking trail.

Port Douglas

Murphy St

Macrossan St



Marine Rescue Port Douglas

Davidson St



Mudlo Street inundation trouble spot.

Boat ramp



Port Douglas Storm Tide Cyclone Shelter is at the Port Douglas State School.

The shelter is for residents who are vulnerable and are unable to shelter-in-place at their home.



Crocodile viewing spot, at the Mowbray River foot bridge.



Mowbray River

Spring Creek



Hazard mapping

- High storm tide inundation area
- Medium storm tide inundation area
- Flood hazard area (Queensland floodplain assessment overlay)

Basemap

- Rivers and ocean
- Natural environment and conservation areas



There is a history of landslides on along the Captain Cook Highway, including at Yule Point.



Properties between the highway and the coastline are exposed to coastal hazards.



Internet and phone services can be unreliable in this area. There are mobile black spots and some homes only have ADSL internet.



Depending upon the location of a landslide or accident on the Captain Cook Hwy, communities can be isolated from either Port Douglas and Mossman or Cairns.



The Captain Cook Hwy is a narrow, winding road in sections. Drivers need to be attentive to the conditions of the road.



There is rare vegetation in and around Wangetti that locals have spent a lot of years caring for and improving.



The bush around Wangetti is drier. These landscapes are more prone to bushfire compared to the wetter rainforests elsewhere in the Shire.



During hot and dry periods, hikers on trails around Wangetti should follow the directions of Queensland Parks and Wildlife and local fire authorities. National Parks and trails may be closed during periods of high fire danger.



Rex Lookout



Hartley's Creek trail head



Mareeba Shire Council

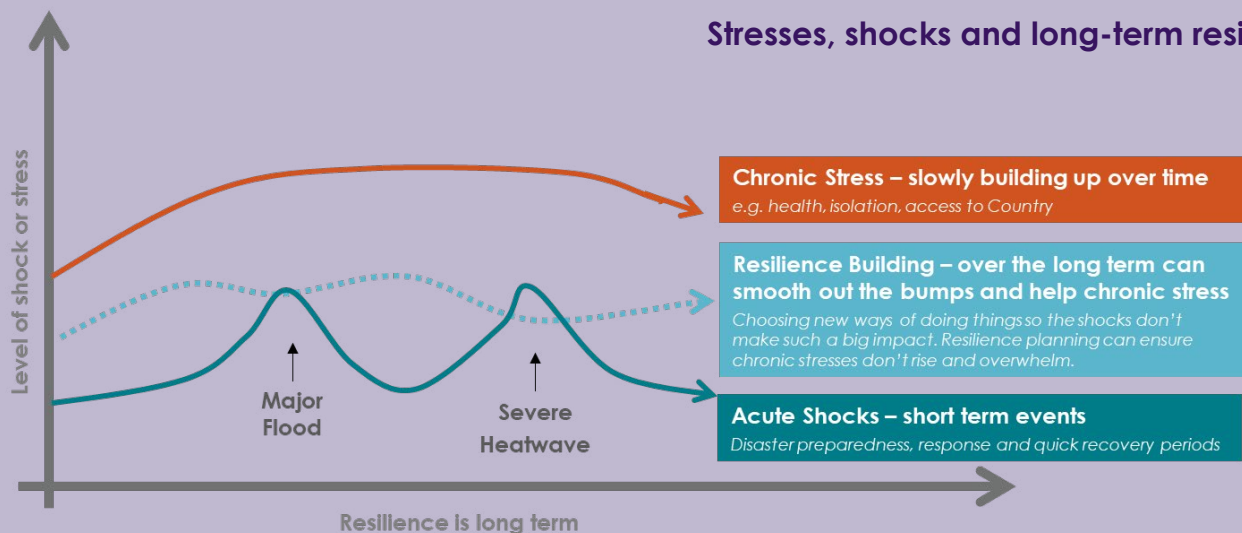
What makes us

VULNERABLE?

- Landslide risk can impact our economic sector and supply chains
- Lots of visitors who don't expect bad weather on holidays – limited understanding of Queensland's heat and tropical lows
- Lots of absentee landlords and short-term rentals
- Our communities are exposed to both fresh water and saltwater inundation
- Need more people involved
- Lots of new younger residents too!
- Lots of people have pets and also need medication
- Leaving it too late to go is dangerous as the highways are closed and there's no where to go – make the decision to leave early!
- Many retirees who need help

TAKING ACTION

- Start a conversation with carers and support networks
- Talk to family and friends about evacuation
- Check the maps and know your risks
- Understand your vulnerabilities and mitigate risk through learning
- Think about long term resilience, risk reduction and immediate response as different things
- Stay connected with volunteers and the Disaster Dashboard - sign up for alerts!
- Cadet programs for youth for SES and RFS
- Talk to landlords about risk reduction
- Create cool places
- Look after your property – know your insurance and structural safety
- Make your evacuation plan – when to go?



Over time, extreme weather events are likely to become more frequent collectively: more heatwaves, potential for bushfires, perhaps fewer cyclones, but when they come, they may be more powerful, and we may see the seasons change with fires coming earlier and rains coming later.

This may mean that we are not fully recovered from one event before another comes our way.

These shocks can build up on top of other concerns like health and isolation, to be chronic stressors which impact our quality of life.

“Having the preparedness conversation around the kitchen table, having a plan that is well communicated and practiced applies to every family regardless of the dynamics.

Simple things such as having a disaster response kit (water, food, torch, medicines etc, the list is endless) and an ability to monitor warnings and advice will support your preparedness.”

Gregg Paterson AFSM



Did you know?

The Port Douglas Storm Tide Cyclone Shelter:

- Should be a last option chosen and priority is given to those in the storm surge zone
- Is intended to shelter residents for a short period
- Accommodates only a limited number of people
- There is no bedding. Chairs are provided
- The centre does not cater for pets
- Residents choosing this option will need to bring food, medications and any personal items which is limited to a single bag.

For emergency assistance during an event:
contact the SES on 132 500.

For life threatening emergencies, call
Triple Zero (000) immediately.

For regional and state resources try:

Wet Tropics Regional Resilience Strategy

Floodcheck Queensland

Get Ready Queensland

Resilient Homes Guidelines

The Future Climate Dashboard



Click on the titles
to access website
information

For all your local information head to:

Douglas Disaster Dashboard
(snap the QR code)



Download the App
Search 'Douglas Shire Council'
in your app store

You can register to receive alerts and warnings for road
closures and emergencies on the [Disaster Dashboard](#).

Douglas Shire Disaster and Emergency Information

Get in touch with the **Disaster Management team**
at disaster@douglas.qld.gov.au

**For maps of your hazards go to the Douglas Shire
Planning Scheme mapping**

Douglas Resilient Coast Strategy