



MOSSMAN & ENVIRONS LOCALITY

**TABLES OF ASSESSMENT
&
MAP**



THIS PAGE SHOULD BE BLANK



MOSSMAN AND ENVIRONS LOCALITY – TABLE 1

DEVELOPMENT ACTIVITY	PLANNING AREA								GUIDE TO APPLICABILITY OF CODES												
									MATERIAL CHANGE OF USE	Rural	Rural Settlement	Residential 1	Residential 2	Commercial	Industry	Community & Recreational Facilities	Conservation	Mossman & Environs Locality Code	Planning Area Code	OVERLAYS	
	Acid Sulfate Soils	Cultural Heritage and Valuable Sites	Natural Hazards	Design & Siting of Advertising Devices	Filling and Excavation	Landscaping	Natural Areas and Scenic Amenity	Vehicle Parking & Access												Sustainable Development	
Aircraft Landing Facility – Commercial	I	I	I	I	I	I	I	I	I	A	A	O	O	O	Yes	A	A	A	*A	A	*A
Aquaculture	I	I	I	I	I	I	I	I	I	A	A	O	O	O	*Yes	A	A	A	*A	A	*A
Business Facilities – using an existing Building	I	I	I	I	I	S	I	I	I	AA	AA	OO	OO	OO	No	AA		AA	*A	A	*A
Business Facilities – not using an existing Building	I	I	I	I	I	C	I	I	I	A	A	O	O	O	No	A	A	A	*A	A	*A
Camping Ground	I	I	I	I	I	I	I	C	I	A	A	O	O	O	Yes	A	A	A	*A	A	*A
Caravan Park	I	I	I	I	I	I	I	C	I	A	A	O	O	O	Yes	A	A	A	*A	A	*A
Caretaker's Residence	C	I	I	I	I	C	C	C	I	A	A	O	O	O	Yes		A	A	*A	A	
Car Park	I	I	I	I	I	C	C	I	I	A	A	O	O	O	Yes	A	A	A	*A	A	
Cemetery & Crematorium	I	I	I	I	I	I	I	I	I	A	A	O	O	O	No	A	A	A	*A	A	*A
Child Care Centre	I	I	C	C	C	I	C	I	I	A	A	O	O	O	Yes	A	A	A	*A	A	*A
Display Facilities	I	I	I	I	I	I	I	I	I	A	A	O	O	O	Yes	A	A	A	*A	A	*A
Educational Establishment	I	I	I	I	I	I	I	I	I	A	A	O	O	O	No	A	A	A	*A	A	*A
Extractive Industry	I	I	I	I	I	I	I	I	I	A	A	O	O	O	Yes	A	A	A	*A	A	
Health Facility	I	I	I	I	I	C	I	I	I	A	A	O	O	O	No	A	A	A	*A	A	*A
Holiday Accommodation	I	I	I	I	I	C	I	I	I	A	A	O	O	O	**Yes	A	A	A	*A	A	*A
Home Activity	C	C	C	C	C	C	I	I	I	A	A	O	O	O	Yes	A		A	*A	A	
Home Based Business	C	C	C	C	C	C	I	I	I	A	A	O	O	O	Yes	A	A	A	*A	A	*A
Home Industry	I	I	I	I	I	I	I	I	I	A	A	O	O	O	No		A	A	*A		
House	S	C	S	S	I	I	I	I	I	A	A	OO	OO	OO	Yes		AA	AA	*A	A	
Indoor Sports & Entertainment	I	I	I	I	I	C	I	C	I	A	A	O	O	O	No	A	A	A	*A	A	*A
Industry	I	I	I	I	I	I	C	I	I	A	A	O	O	O	No	A	A	A	*A	A	
Intensive Animal Husbandry	C	I	I	I	I	I	I	I	I	A	A	O	O	O	*Yes	A	A	A	*A	A	*A
Interpretive Facility	I	I	I	I	I	I	I	I	I	A	A	O	O	O	Yes	A	A	A	*A	A	*A
Multi-Unit Housing	I	I	I	C	C	I	I	I	I	A	A	O	O	O	**Yes	A	A	A	*A	A	*A

NOTE: Self Assessable development converts to Code Assessable development if the development cannot comply in full with the applicable Acceptable Solutions in any relevant Code

KEY

E	Exempt
S	Self Assessable
C	Code Assessable
I	Impact Assessable
I	Impact Assessable (Inconsistent)

A	The Code is Applicable
*A	If the circumstances described in the Applicability of the Code are triggered, the Code applies
AA	The Code is applicable for all development EXCEPT Self Assessable development

O	Refer to the Overlay Maps for the Mossman and Environs Locality. If the site is affected by an Overlay and if the circumstances described in the Applicability of the relevant Code are triggered, the Code for the Overlay applies
---	---

OO	The Code is applicable for all development EXCEPT Self Assessable development
----	---

*	See – Aquaculture & Intensive Animal Husbandry Code
---	---

**	See – Multi-Unit Housing/Holiday Accommodation/Retirement Facility Code
----	---

THIS PAGE SHOULD BE BLANK



MOSSMAN AND ENVIRONS LOCALITY – TABLE 1

DEVELOPMENT ACTIVITY	PLANNING AREA								GUIDE TO APPLICABILITY OF CODES												
									MATERIAL CHANGE OF USE	Rural	Rural Settlement	Residential 1	Residential 2	Commercial	Industry	Community & Recreational Facilities	Conservation	Mossman & Environs Locality Code	Planning Area Code	OVERLAYS	
Acid Sulfate Soils	Cultural Heritage and Valuable Sites	Natural Hazards	Design & Siting of Advertising Devices	Filling and Excavation	Landscaping	Natural Areas and Scenic Amenity	Vehicle Parking & Access	Sustainable Development													
Off Premises Advertising Device	I	I	I	I	I	I	I	I	I	A	A	O	O	O	No	A		A	*A		
Outdoor Sport & Recreation	I	I	I	I	I	I	C	I	I	A	A	O	O	O	No	A	A	A	*A	A	*A
Outstation/Seasonal Camp	I	I	I	I	I	I	I	I	I	A	A	O	O	O	No		A	A	*A	A	
Park & Open Space	E	E	E	E	E	E	E	E	E										*A		
Place of Assembly	I	I	I	C	C	I	C	I	I	A	A	O	O	O	No	A	A	A	*A	A	*A
Primary Industry	S	I	I	I	I	I	I	I	I	AA	A	OO	OO	OO	Yes			AA	*A	A	
Private Forestry	C	I	I	I	I	I	I	I	I	A	A	O	O	O	Yes			A	*A	A	
Public Utilities & Facilities	C	C	C	C	C	C	C	C	C	A	A	O	O	O	No		A	A	*A	A	*A
Restaurant – using an existing Building	I	I	I	I	S	I	I	I	I	AA	AA	OO	OO	OO	No	AA		AA	*A	A	*A
Restaurant – not using an existing Building	I	I	I	I	C	I	I	I	I	A	A	O	O	O	No	A	A	A	*A	A	*A
Retirement Facility	I	I	C	C	I	I	C	I	I	A	A	O	O	O	**Yes	A	A	A	*A	A	*A
Service Industry	I	I	I	I	I	I	I	I	I	A	A	O	O	O	No	A	A	A	*A	A	*A
Service Station	I	I	I	I	I	C	I	I	I	A	A	O	O	O	Yes	A	A	A	*A	A	*A
Shopping Facility– using an existing Building	I	I	I	I	S	I	I	I	I	AA	AA	OO	OO	OO	No	AA		AA	*A	A	*A
Shopping Facility– not using an existing Building	I	I	I	I	C	I	I	I	I	A	A	O	O	O	No	A	A	A	*A	A	*A
Short Term Accommodation	I	I	I	C	C	I	I	I	I	A	A	O	O	O	Yes	A	A	A	*A	A	*A
Special Residential Use	I	I	C	C	C	I	I	I	I	A	A	O	O	O	No		A	A	*A	A	*A
Staff Quarters	I	I	I	I	I	I	I	I	I	A	A	O	O	O	No		A	A	*A	A	*A
Tavern	I	I	I	I	I	I	I	I	I	A	A	O	O	O	No	A	A	A	*A	A	*A
Telecommunication Facilities	C	C	C	C	C	C	C	C	C	A	A	O	O	O	Yes	A	A	A	*A	A	
Tourist Attraction	I	I	I	I	I	I	I	I	I	A	A	O	O	O	Yes	A	A	A	*A	A	*A
Veterinary Facilities	I	I	I	I	C	I	I	I	I	A	A	O	O	O	No	A	A	A	*A	A	*A
Other-Undefined (Except Use for a Road)	I	I	I	I	I	I	I	I	I	A	A	O	O	O	No	A	A	A	*A	A	*A

NOTE: Self Assessable development converts to Code Assessable development if the development cannot comply in full with the applicable Acceptable Solutions in any relevant Code

KEY

E	Exempt
S	Self Assessable
C	Code Assessable
I	Impact Assessable
I	Impact Assessable (Inconsistent)

A	The Code is Applicable
*A	If the circumstances described in the Applicability of the Code are triggered, the Code applies
AA	The Code is applicable for all development EXCEPT Self Assessable development

O	Refer to the Overlay Maps for the Mossman and Environs Locality. If the site is affected by an Overlay and if the circumstances described in the Applicability of the relevant Code are triggered, the Code for the Overlay applies
OO	The Code is applicable for all development EXCEPT Self Assessable development

* See – Aquaculture & Intensive Animal Husbandry Code

** See – Multi-Unit Housing/Holiday Accommodation/Retirement Facility Code

THIS PAGE SHOULD BE BLANK,

MOSSMAN AND ENVIRONS LOCALITY – TABLE 2

DEVELOPMENT ACTIVITY	PLANNING AREA								GUIDE TO APPLICABILITY OF CODES											
	Rural	Rural Settlement	Residential 1	Residential 2	Commercial	Industry	Community & Recreational Facilities	Conservation	Mossman & Environs Locality Code	Planning Area	OVERLAYS			GENERAL						
											Acid Sulfate Soils	Cultural Heritage & Valuable Sites	Natural Hazards	Design & Siting of Advertising Devices	Filling & Excavation	Landscaping	Natural Areas and Scenic Amenity	Reconfiguring a Lot	Sustainable Development	Vegetation Management
Reconfiguring a Lot – Within the Priority Infrastructure Area	C	C	C	C	C	C	C	I	A	A	O	O	O				*A	A		
Reconfiguring a Lot – Outside the Priority Infrastructure Area	C	I	I	I	I	I	I	I	A	A	O	O	O				*A	A		
Operational Work Associated with Reconfiguring a Lot	C	C	C	C	C	C	C	C	A	A	O	O	O		A	A	*A	A		
Operational Work - Filling or Excavation not associated with a Material Change of Use	C	C	C	C	C	C	C	C	A	A	O	O	O		A		*A			
Operational Work - Engineering Works not associated with a Material Change of Use	C	C	C	C	C	C	C	C	A	A	O	O	O		A		*A			
Operational Work - Placing an Advertising Device on Premises not associated with a Material Change of Use	C	C	C	C	C	C	C	C	A	A				A			*A			
Operational Work – Vegetation Management	S	S	S	S	S	S	S	S												A
Building Work other than Minor Building Work not associated with a Material Change of Use	E	E	E	E	E	E	E	C	A	A							*A			

KEY

E	Exempt
S	Self Assessable
C	Code Assessable
I	Impact Assessable
I	Impact Assessable (Inconsistent)

A	The Code is Applicable
*A	If the circumstances described in the Applicability of the Code are triggered, the Code applies

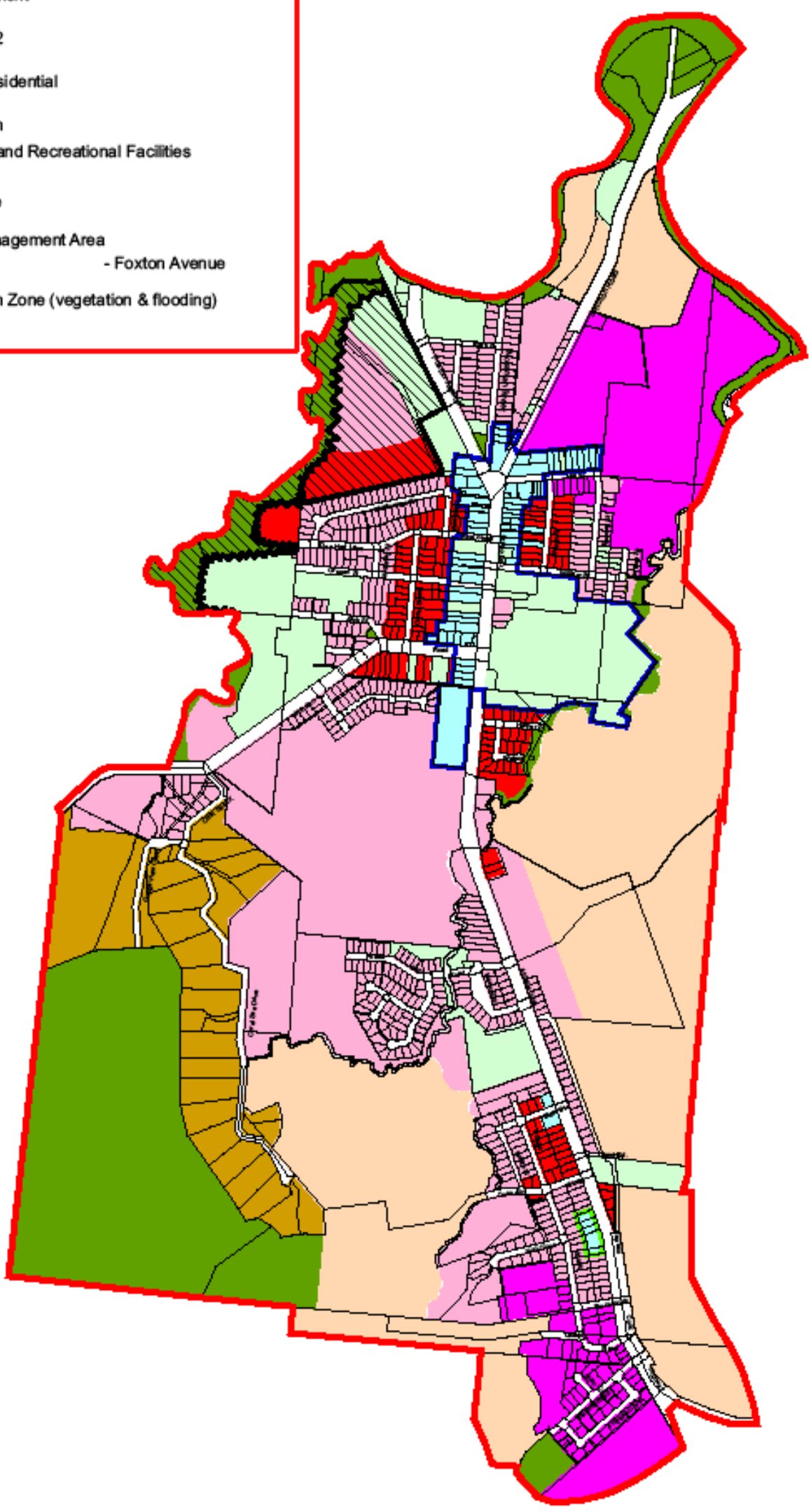
O	Refer to the Overlay Maps for the Mossman and Environs Locality. If the site is affected by an Overlay and if the circumstances described in the Applicability of the relevant Code are triggered, the Code for the Overlay applies
---	---

NOTE: Self Assessable development converts to Code Assessable development if the development cannot comply in full with the applicable Acceptable Solutions in any relevant Code

THIS PAGE SHOULD BE BLANK

Planning Areas

- Rural
- Rural Settlement
- Residential 1
- Residential 2
- Commercial
- Tourist & Residential
- Industry
- Conservation
- Community and Recreational Facilities
- Town Centre
- Local Centre
- Special Management Area
- Foxtan Avenue
- Investigation Zone (vegetation & flooding)



DOUGLAS SHIRE COUNCIL
 This is and shall remain the property
 of the Douglas Shire Council. Using or copying
 this document or any part of it without specific
 authorization is absolutely prohibited.
 NOT TO SCALE
 P.O. Box 357 Tel: (07) 4099 9450
 Mossman, Qld., 4873 Fax: (07) 4098 2902



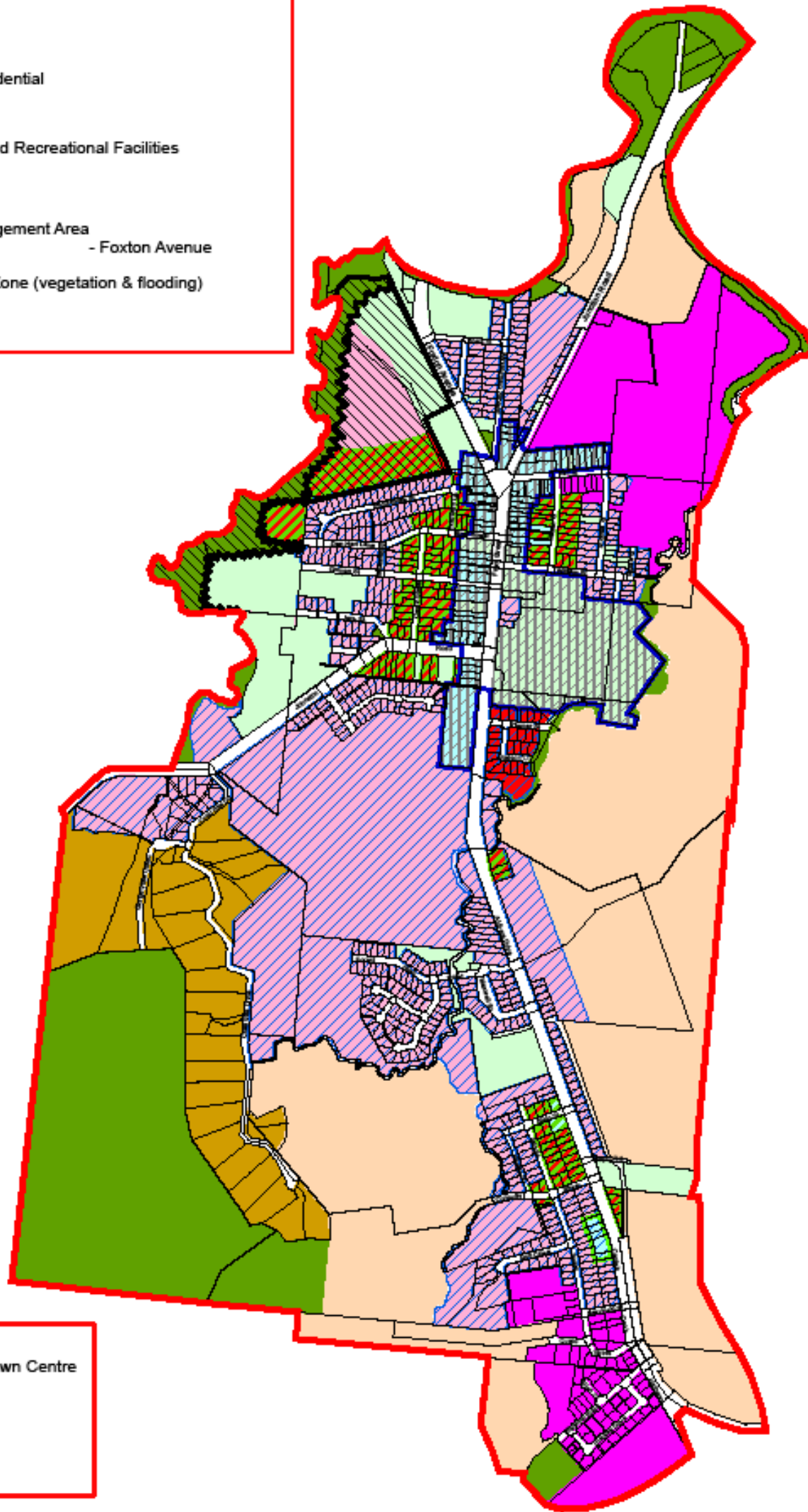
Douglas Shire Council
 Planning Areas
 Mossman & Environs Locality



Date: August 2006
 Author: GDK
 Map No. **M 1**

Planning Areas

- Rural
- Rural Settlement
- Residential 1
- Residential 2
- Commercial
- Tourist & Residential
- Industry
- Conservation
- Community and Recreational Facilities
- Town Centre
- Local Centre
- Special Management Area
- Foxtan Avenue
- Investigation Zone (vegetation & flooding)



Plot Ratio

- High Scale - Town Centre
- Medium Scale
- Low Scale

DOUGLAS SHIRE COUNCIL
 This is and shall remain the property
 of the Douglas Shire Council. Using or copying
 this document or any part of it without specific
 authorization is absolutely prohibited.
 NOT TO SCALE
 P.O. Box 357 Tel: (07) 4099 9450
 Mossman, Qld., 4873 Fax: (07) 4098 2902

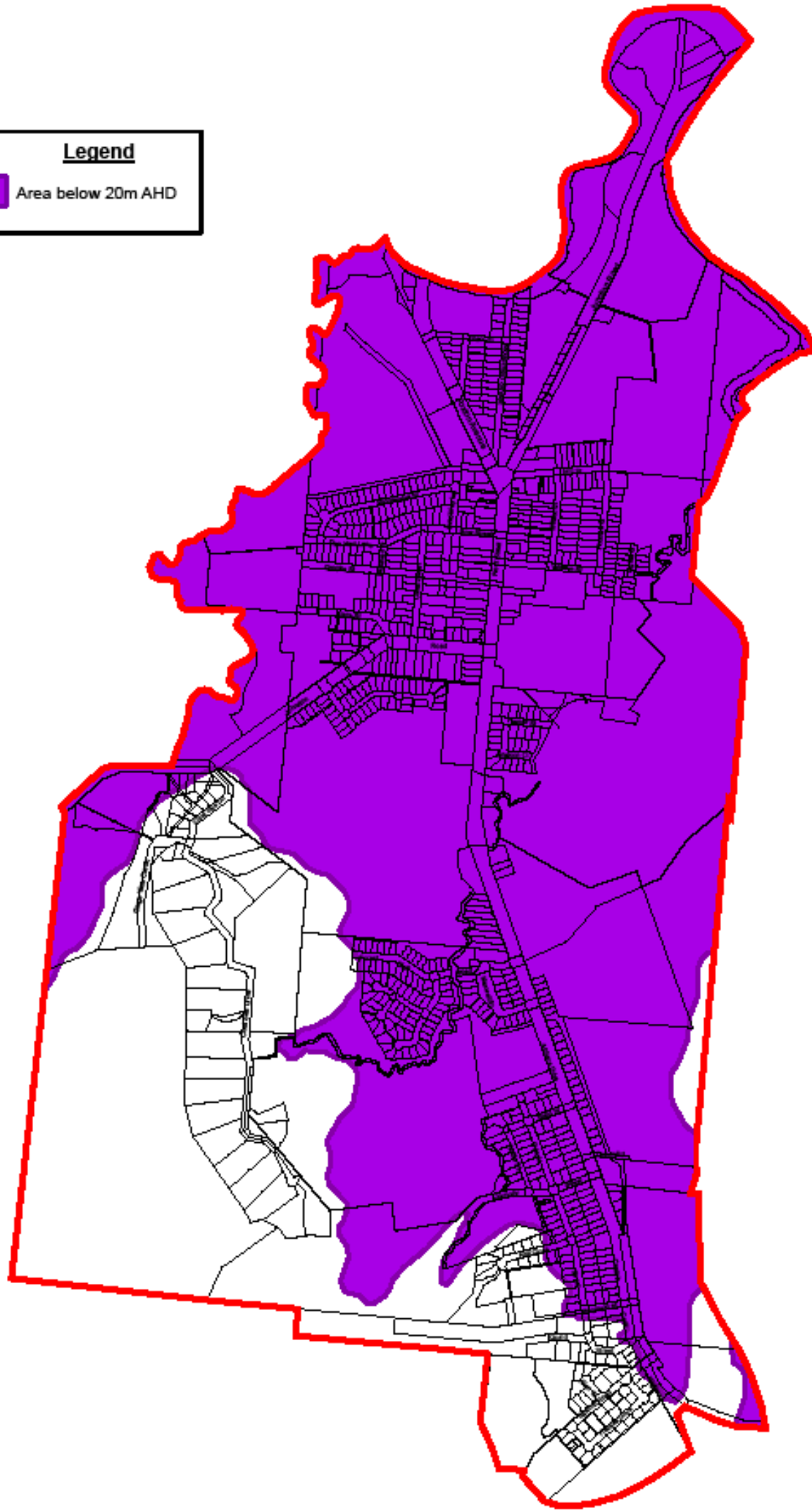


Douglas Shire Council
 Plot Ratio Designations
 Mossman & Environs Locality



Date: August 2006
 Author: GDK
 Map No. **M 2**

Legend
Area below 20m AHD



DOUGLAS SHIRE COUNCIL
This is and shall remain the property
of the Douglas Shire Council. Using or copying
this document or any part of it without specific
authorization is absolutely prohibited.
NOT TO SCALE
P.O. Box 357 Tel: (07) 4099 9450
Mossman, Qld., 4873 Fax: (07) 4098 2902



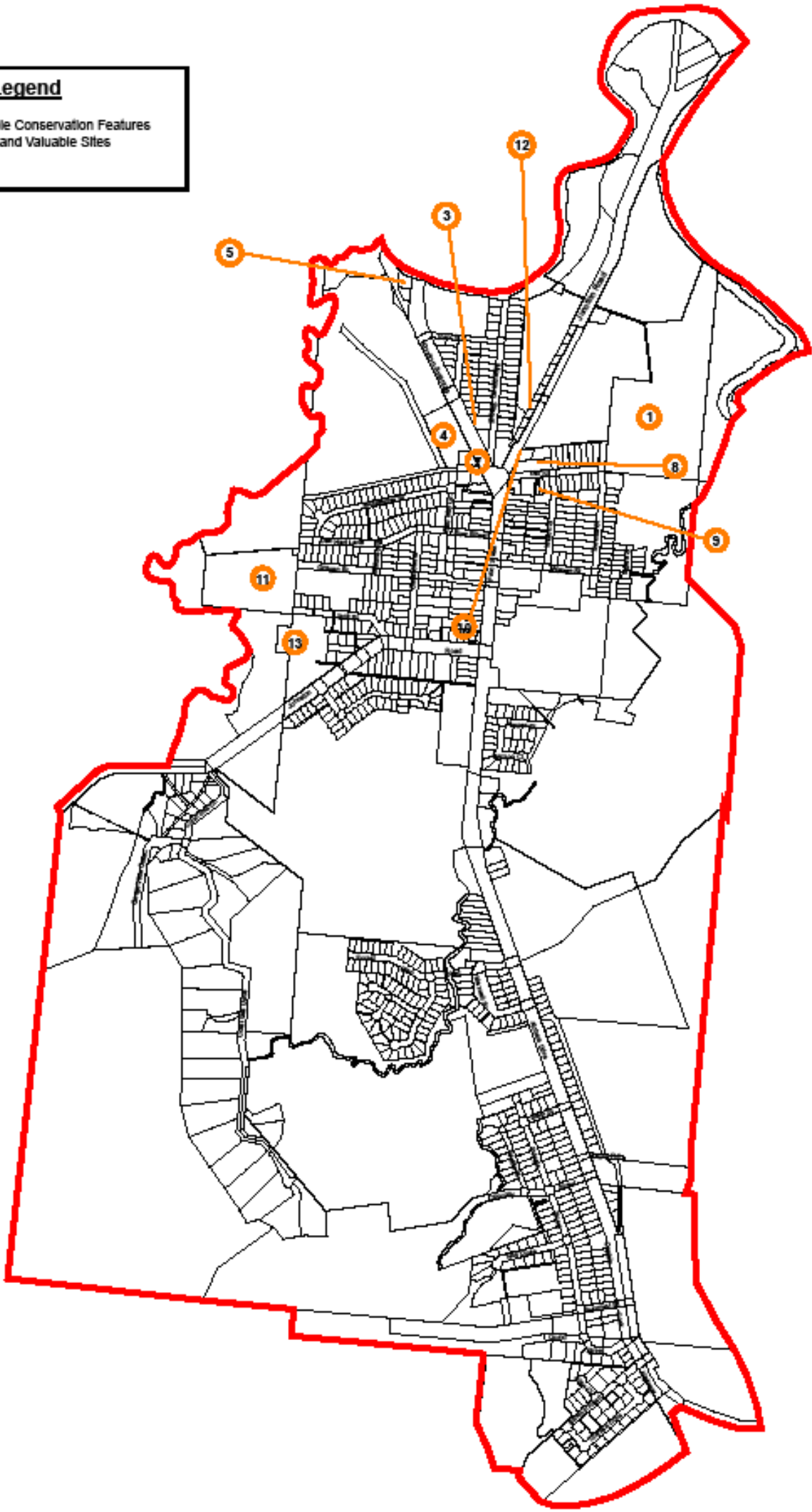
Douglas Shire Council
Overlay- Acid Sulfate Soils
Mossman & Environs Locality



Date: August 2006
Author: GDK
Map No. **M3**

Legend

15 Valuable Conservation Features and Valuable Sites



DOUGLAS SHIRE COUNCIL
 This is and shall remain the property
 of the Douglas Shire Council. Using or copying
 this document or any part of it without specific
 authorization is absolutely prohibited.

NOT TO SCALE
 P.O. Box 357 Tel: (07) 4099 9450
 Mossman, Qld., 4873 Fax: (07) 4098 2902



Douglas Shire Council
 Overlay- Cultural Heritage & Valuable Sites
 Mossman & Environs Locality



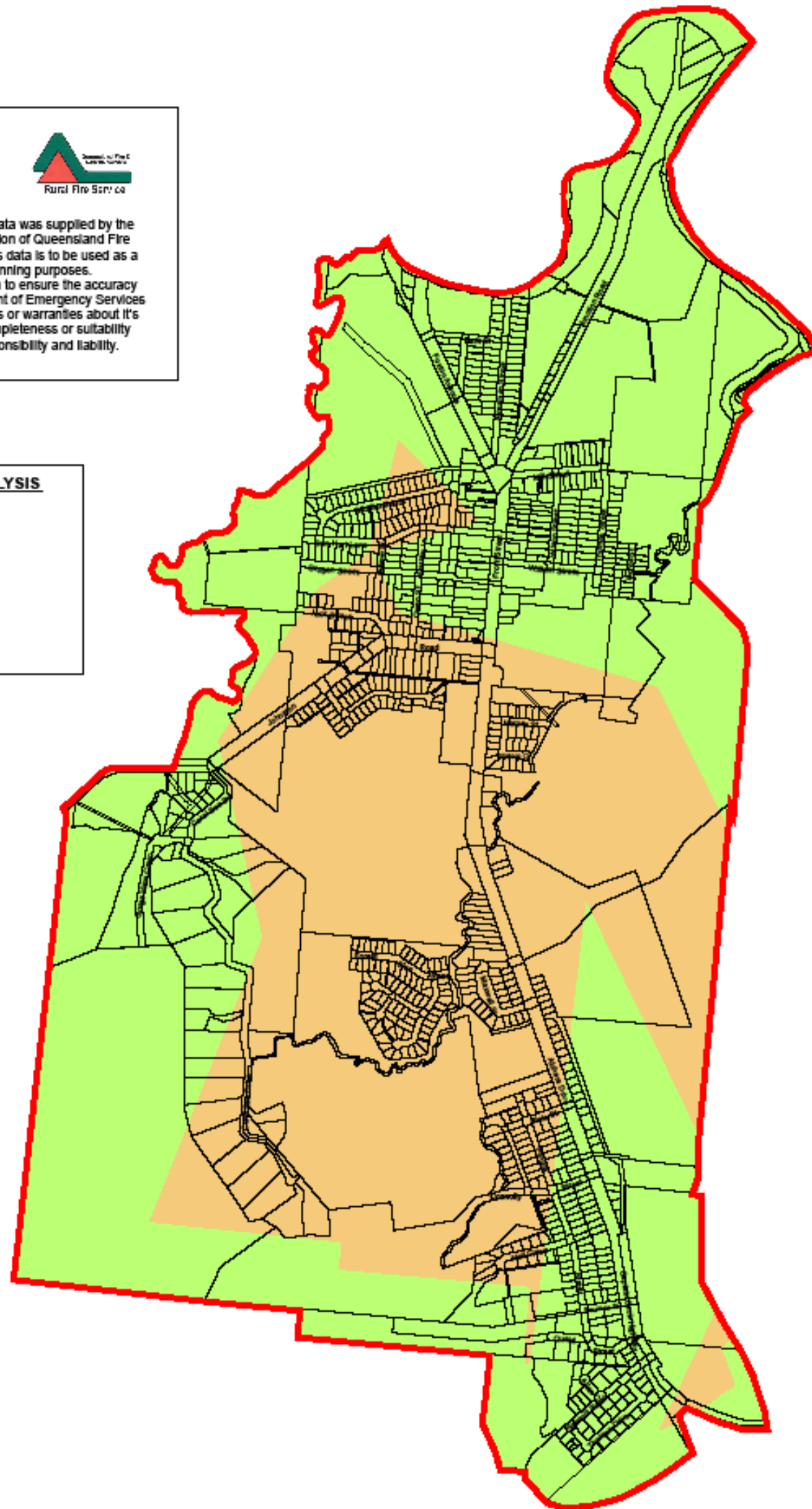
Date: August 2006
 Author: GDK
 Map No. **M4**



Bushfire Risk Analysis data was supplied by the Rural Fire Service Division of Queensland Fire and Rescue Service. This data is to be used as a guide only for planning purposes. While every care is taken to ensure the accuracy of this data, the Department of Emergency Services makes no representations or warranties about its accuracy, reliability, completeness or suitability and disclaims all responsibility and liability.

BUSHFIRE RISK ANALYSIS

-  Low Risk Hazard
-  Medium Risk Hazard
-  High Risk Hazard



DOUGLAS SHIRE COUNCIL
 This is and shall remain the property of the Douglas Shire Council. Using or copying this document or any part of it without specific authorization is absolutely prohibited.
NOT TO SCALE
 P.O. Box 357 Tel: (07) 4099 9450
 Mossman, Qld., 4873 Fax: (07) 4099 2902



Douglas Shire Council
 Overlay - Natural Hazards
 Mossman & Environs Locality



Date: August 2006
 Author: GOK
 Map No. **M6**

THIS PAGE SHOULD BE BLANK
