



RURAL AREAS & RURAL SETTLEMENTS LOCALITY

**TABLES OF ASSESSMENT
&
MAPS**



THIS PAGE SHOULD BE BLANK



RURAL AREAS AND RURAL SETTLEMENTS LOCALITY – TABLE 1

DEVELOPMENT ACTIVITY	PLANNING AREA							GUIDE TO APPLICABILITY OF CODES												
								OVERLAYS					LAND USE CODES	GENERAL						
MATERIAL CHANGE OF USE	Rural	Rural Settlement	Residential 1	Tourist & Residential	Industry	Community & Recreational Facilities	Conservation	Rural Areas and Rural Settlements Locality Code	Planning Area Code	Acid Sulfate Soils	Cultural Heritage & Valuable Sites	Natural Hazards			Design & Siting of Advertising Devices	Filling & Excavation	Landscaping	Natural Areas and Scenic Amenity	Vehicle Parking & Access	Sustainable Development
DEFINED LAND USE																				
Aircraft Landing Facility - Commercial	I	I	I	I	I	I	I	A	A	O	O	O		Yes	A	A	A	*A	A	*A
Aquaculture	I	I	I	I	I	I	I	A	A	O	O	O		*Yes	A	A	A	*A	A	*A
Business Facilities – using an existing Building	I	I	I	I	I	I	I	A	A	O	O	O		No	A		A	*A	A	*A
Business Facilities – not using an existing Building	I	I	I	I	I	I	I	A	A	O	O	O		No	A	A	A	*A	A	*A
Camping Ground	I	I	I	I	I	I	I	A	A	O	O	O		Yes	A	A	A	*A	A	*A
Caravan Park	I	I	I	I	I	I	I	A	A	O	O	O		Yes	A	A	A	*A	A	*A
Caretaker's Residence	C	C	C	C	I	C	I	A	A	O	O	O		Yes		A	A	*A	A	
Car Park	I	I	I	I	I	I	I	A	A	O	O	O		Yes	A	A	A	*A	A	
Cemetery & Crematorium	I	I	I	I	I	I	I	A	A	O	O	O		No	A	A	A	*A	A	*A
Child Care Centre	I	I	I	I	I	I	I	A	A	O	O	O		Yes	A	A	A	*A	A	*A
Display Facilities	I	I	I	I	I	I	I	A	A	O	O	O		Yes	A	A	A	*A	A	*A
Educational Establishment	I	I	I	I	I	I	I	A	A	O	O	O		No	A	A	A	*A	A	*A
Extractive Industry	I	I	I	I	I	I	I	A	A	O	O	O		Yes	A	A	A	*A	A	
Health Facility	I	I	I	I	I	I	I	A	A	O	O	O		No	A	A	A	*A	A	*A
Holiday Accommodation	I	I	I	I	I	I	I	A	A	O	O	O		**Yes	A	A	A	*A	A	*A
Home Activity	C	C	C	C	I	I	I	A	A	O	O	O		Yes	A		A	*A	A	
Home Based Business	C	C	C	C	I	I	I	A	A	O	O	O		Yes	A	A	A	*A	A	*A
Home Industry	I	I	I	I	I	I	I	A	A	O	O	O		No		A	A	*A		
House	S	C	C	C	I	I	I	A	A	OO	OO	OO		Yes		AA	AA	*A	A	
Indoor Sports & Entertainment	I	I	I	I	I	I	I	A	A	O	O	O		No	A	A	A	*A	A	*A
Industry	I	I	I	I	I	I	I	A	A	O	O	O		No	A	A	A	*A	A	
Intensive Animal Husbandry	C	I	I	I	I	I	I	A	A	O	O	O		*Yes	A	A	A	*A	A	*A
Interpretive Facility	I	I	I	I	I	I	I	A	A	O	O	O		Yes	A	A	A	*A	A	*A

NOTE: Self Assessable development converts to Code Assessable development if the development cannot comply in full with the applicable Acceptable Solutions in any relevant Code

KEY

E	Exempt
S	Self Assessable
C	Code Assessable
I	Impact Assessable
I	Impact Assessable (Inconsistent)

A	The Code is Applicable
*A	If the circumstances described in the Applicability of the Code are triggered, the Code applies
AA	The Code is applicable for all development EXCEPT Self Assessable development

O	Refer to the Overlay Maps for the Rural Areas and Rural Settlements Locality. If the site is affected by an Overlay and if the circumstances described in the Applicability of the relevant Code are triggered, the Code for the Overlay applies
OO	The Code is applicable for all development EXCEPT Self Assessable development

* See – Aquaculture & Intensive Animal Husbandry Code

** See – Multi-Unit Housing/Holiday Accommodation/Retirement Facility Code

THIS PAGE SHOULD BE BLANK



RURAL AREAS AND RURAL SETTLEMENTS LOCALITY – TABLE 1

DEVELOPMENT ACTIVITY	PLANNING AREA							GUIDE TO APPLICABILITY OF CODES																					
								MATERIAL CHANGE OF USE							OVERLAYS					LAND USE CODES		GENERAL							
															Rural Areas and Rural Settlements Locality Code	Planning Area Code	Acid Sulfate Soils	Cultural Heritage & Valuable Sites	Natural Hazards			Design & Siting of Advertising Devices	Filling & Excavation	Landscaping	Natural Areas and Scenic Amenity	Vehicle Parking & Access	Sustainable Development		
DEFINED LAND USE	Rural	Rural Settlement	Residential 1	Tourist & Residential	Industry	Community & Recreational Facilities	Conservation																						
Multi-Unit Housing	I	I	I	I	I	I	I	A	A	O	O	O	**Yes	A	A	A	*A	A	*A										
Off Premises Advertising Device	I	I	I	I	I	I	I	A	A	O	O	O	No	A		A	*A												
Outdoor Sport & Recreation	I	I	I	I	I	I	I	A	A	O	O	O	No	A	A	A	*A	A	*A										
Outstation/Seasonal Camp	I	I	I	I	I	I	I	A	A	O	O	O	No		A	A	*A	A											
Park & Open Space	E	E	E	E	E	E	E										*A												
Place of Assembly	I	I	I	I	I	I	I	A	A	O	O	O	No	A	A	A	*A	A	*A										
Primary Industry	S	I	I	I	I	I	I	AA	A	OO	OO	OO	Yes			AA	*A	A											
Private Forestry	C	I	I	I	I	I	I	A	A	O	O	O	Yes			A	*A	A											
Public Utilities & Facilities	C	C	C	C	C	C	C	A	A	O	O	O	No		A	A	*A	A	*A										
Restaurant – using an existing Building	I	I	I	I	I	I	I	A	A	O	O	O	No	A		A	*A	A	*A										
Restaurant – not using an existing Building	I	I	I	I	I	I	I	A	A	O	O	O	No	A	A	A	*A	A	*A										
Retirement Facility	I	I	I	I	I	I	I	A	A	O	O	O	**Yes	A	A	A	*A	A	*A										
Service Industry	I	I	I	I	I	I	I	A	A	O	O	O	No	A	A	A	*A	A	*A										
Service Station	I	I	I	I	I	I	I	A	A	O	O	O	Yes	A	A	A	*A	A	*A										
Shopping Facility – using an existing Building	I	I	I	I	I	I	I	A	A	O	O	O	No	A		A	*A	A	*A										
Shopping Facility – not using an existing Building	I	I	I	I	I	I	I	A	A	O	O	O	No	A	A	A	*A	A	*A										
Short Term Accommodation	I	I	I	I	I	I	I	A	A	O	O	O	Yes	A	A	A	*A	A	*A										
Special Residential Use	I	I	I	I	I	I	I	A	A	O	O	O	No		A	A	*A	A	*A										
Staff Quarters	I	I	I	I	I	I	I	A	A	O	O	O	No		A	A	*A	A	*A										
Tavern	I	I	I	I	I	I	I	A	A	O	O	O	No	A	A	A	*A	A	*A										
Telecommunication Facilities	C	C	C	C	C	C	C	A	A	O	O	O	Yes	A	A	A	*A	A											
Tourist Attraction	I	I	I	I	I	I	I	A	A	O	O	O	Yes	A	A	A	*A	A	*A										
Veterinary Facilities	I	I	I	I	I	I	I	A	A	O	O	O	No	A	A	A	*A	A	*A										
Other-Undefined (Except Use for a Road)	I	I	I	I	I	I	I	A	A	O	O	O	No	A	A	A	*A	A	*A										

NOTE: Self Assessable development converts to Code Assessable development if the development cannot comply in full with the applicable Acceptable Solutions in any relevant Code

KEY

E	Exempt
S	Self Assessable
C	Code Assessable
I	Impact Assessable
I	Impact Assessable (Inconsistent)
A	The Code is Applicable
*A	If the circumstances described in the Applicability of the Code are triggered, the Code applies
AA	The Code is applicable for all development EXCEPT Self Assessable development
O	Refer to the Overlay Maps for the Rural Areas and Rural Settlements Locality. If the site is affected by an Overlay and if the circumstances described in the Applicability of the relevant Code are triggered, the Code for the Overlay applies
OO	The Code is applicable for all development EXCEPT Self Assessable development
*	See – Aquaculture & Intensive Animal Husbandry Code
**	See – Multi-Unit Housing/Holiday Accommodation/Retirement Facility Code

THIS PAGE SHOULD BE BLANK



RURAL AREAS AND RURAL SETTLEMENTS LOCALITY – TABLE 2

DEVELOPMENT ACTIVITY	PLANNING AREA							GUIDE TO APPLICABILITY OF CODES											
								OVERLAY					GENERAL						
								Rural Areas & Rural Settlements Locality Code	Planning Area Code	Acid Sulfate Soils	Cultural Heritage & Valuable Sites	Natural Hazards	Design & Siting of Advertising Devices	Filling & Excavation	Landscaping	Natural Areas and Scenic Amenity	Reconfiguring a Lot	Sustainable Development	Vegetation Management
Rural	Rural Settlement	Residential I	Tourist & Residential	Industry	Community & Recreational Facilities	Conservation													
Reconfiguring a Lot	C	C	C	C	C	C	I	A	A	O	O	O				*A	A		
Operational Work Associated with Reconfiguring a Lot	C	C	C	C	C	C	C	A	A	O	O	O		A	A	*A	A		
Operational Work - Filling or Excavation not associated with a Material Change of Use	C	C	C	C	C	C	C	A	A	O	O	O		A		*A			
Operational Work - Engineering Works not associated with a Material Change of Use	C	C	C	C	C	C	C	A	A	O	O	O		A		*A			
Operational Work - Placing an Advertising Device on Premises not associated with a Material Change of Use	C	C	C	C	C	C	C	A	A				A			*A			
Operational Work – Vegetation Management	S	S	S	S	S	S	S												A
Building Work other than Minor Building Work not associated with a Material Change of Use	E	E	E	E	E	E	C	A	A							*A			

KEY

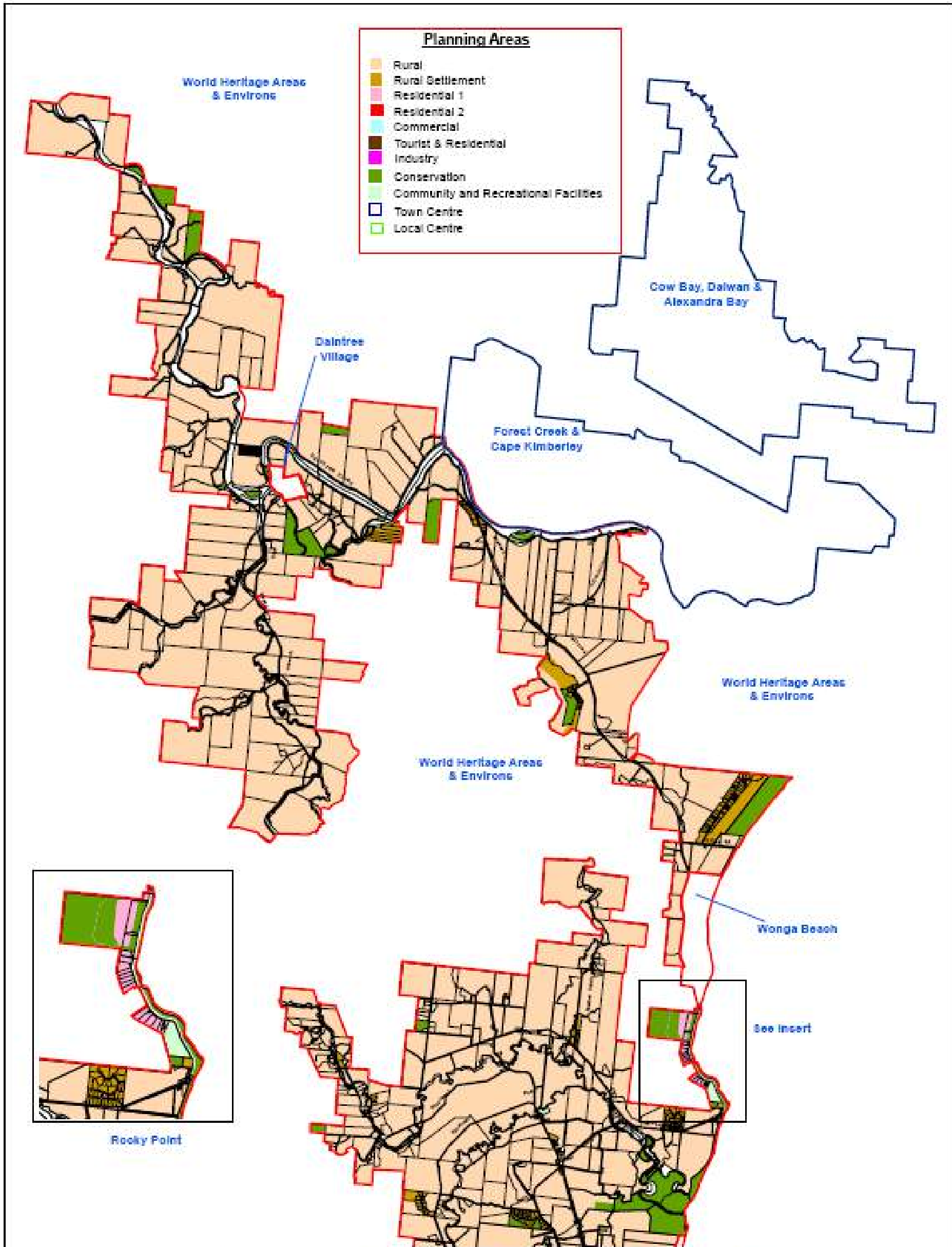
E	Exempt
S	Self Assessable
C	Code Assessable
I	Impact Assessable
I	Impact Assessable (Inconsistent)

A	The Code is Applicable
*A	If the circumstances described in the Applicability of the Code are triggered, the Code applies

O	Refer to the Overlay Maps for the Rural Areas and Rural Settlements Locality. If the site is affected by an Overlay and if the circumstances described in the Applicability of the relevant Code are triggered, the Code for the Overlay applies
---	--

NOTE: Self Assessable development converts to Code Assessable development if the development cannot comply in full with the applicable Acceptable Solutions in any relevant Code

THIS PAGE SHOULD BE BLANK



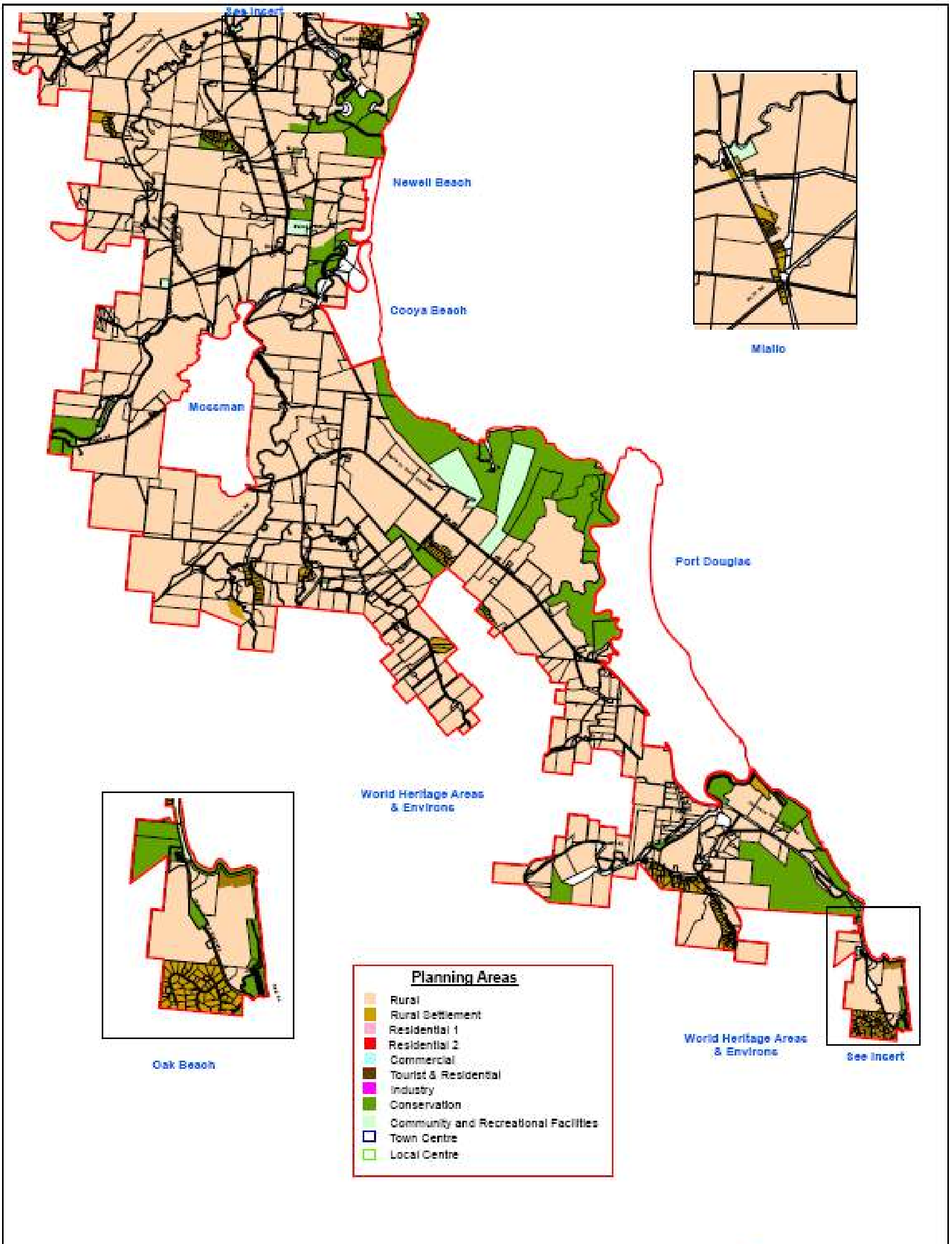
DOUGLAS SHIRE COUNCIL
 This is and shall remain the property
 of the Douglas Shire Council. Using or copying
 this document or any part of it without specific
 authorization is absolutely prohibited.
 NOT TO SCALE
 P.O. Box 337 Tel: (07) 4096 9450
 Mossman, Qld, 4873 Fax: (07) 4096 2902



Douglas Shire Council
 Planning Areas
 Rural Areas & Rural Settlements Locality - Sheet 1



Date: August 2006
 Author: GOK
 Map No. R1(a)



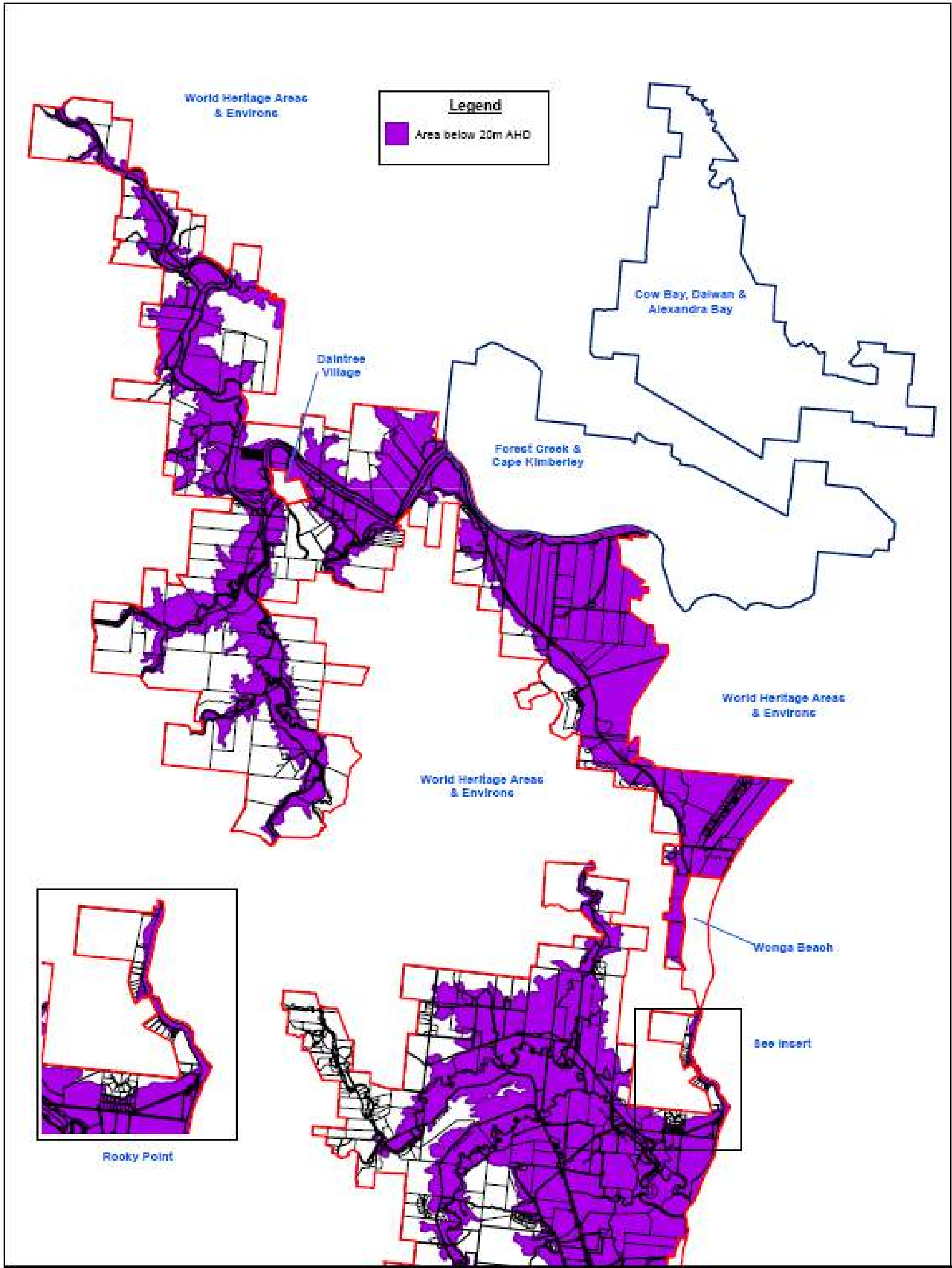
DOUGLAS SHIRE COUNCIL
 This is and shall remain the property
 of the Douglas Shire Council. Using or copying
 this document or any part of it without specific
 authorisation is absolutely prohibited.
 NOT TO SCALE
 PO. Box 157 Tel: (07) 4096 9400
 Moosman, Qld, 4873 Fax: (07) 4096 2802



Douglas Shire Council
 Planning Areas
 Rural Areas & Rural Settlements Locality - Sheet 2



Date: August 2009
 Author: GOK
 Map No. R1 (b)

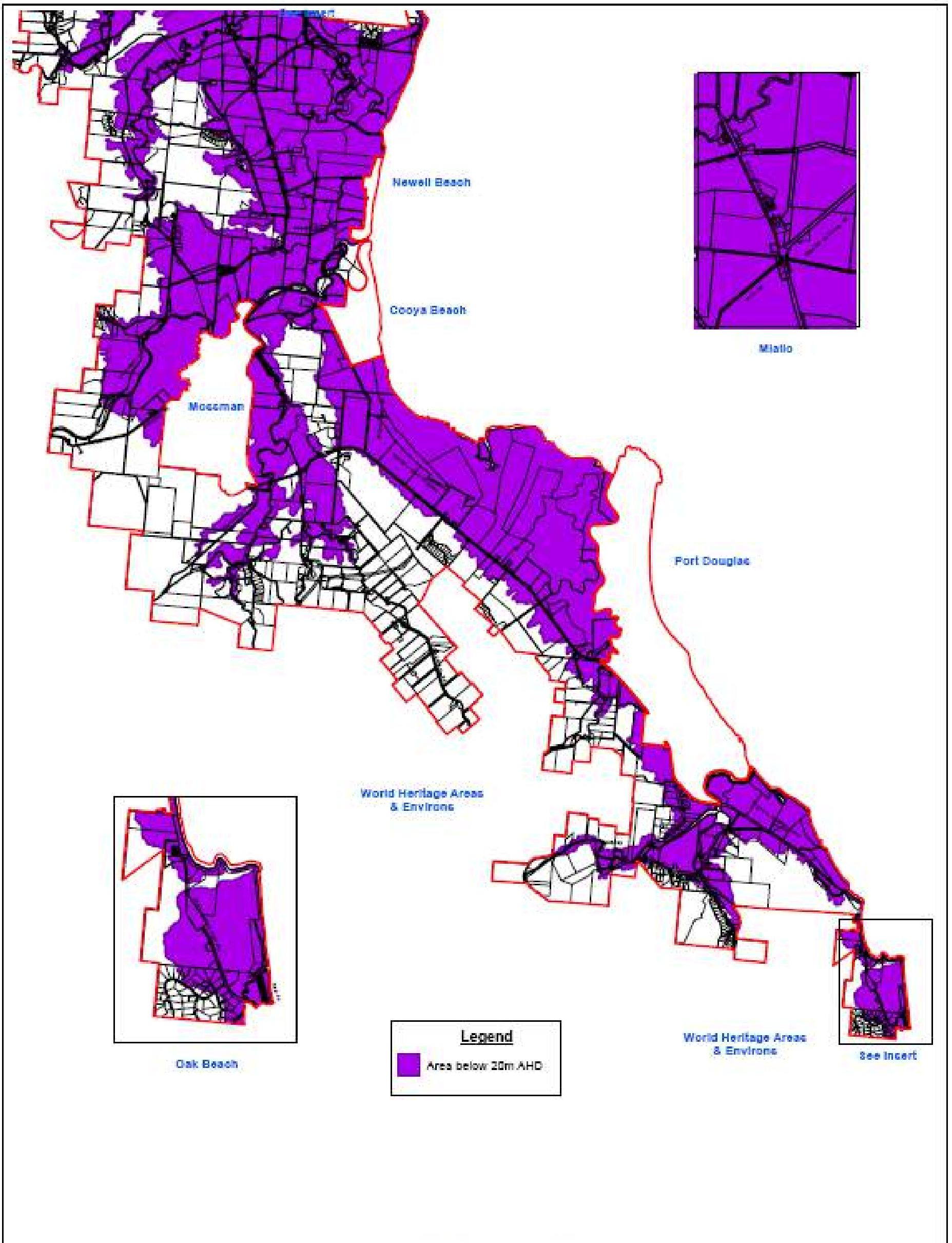


DOUGLAS SHIRE COUNCIL
 This is and shall remain the property
 of the Douglas Shire Council. Using or copying
 this document or any part of it without specific
 authorisation is absolutely prohibited.
 NOT TO SCALE
 P.O. Box 357 Tel: (07) 4068 9450
 Moesman, Qld., 4873 Fax: (07) 4068 2602

Douglas Shire Council
 Overlay - Acid Sulfate Soils
 Rural Areas & Rural Settlements Locality - Sheet 1



Date: August 2006
 Author: GDM
 Map No. R2(a)



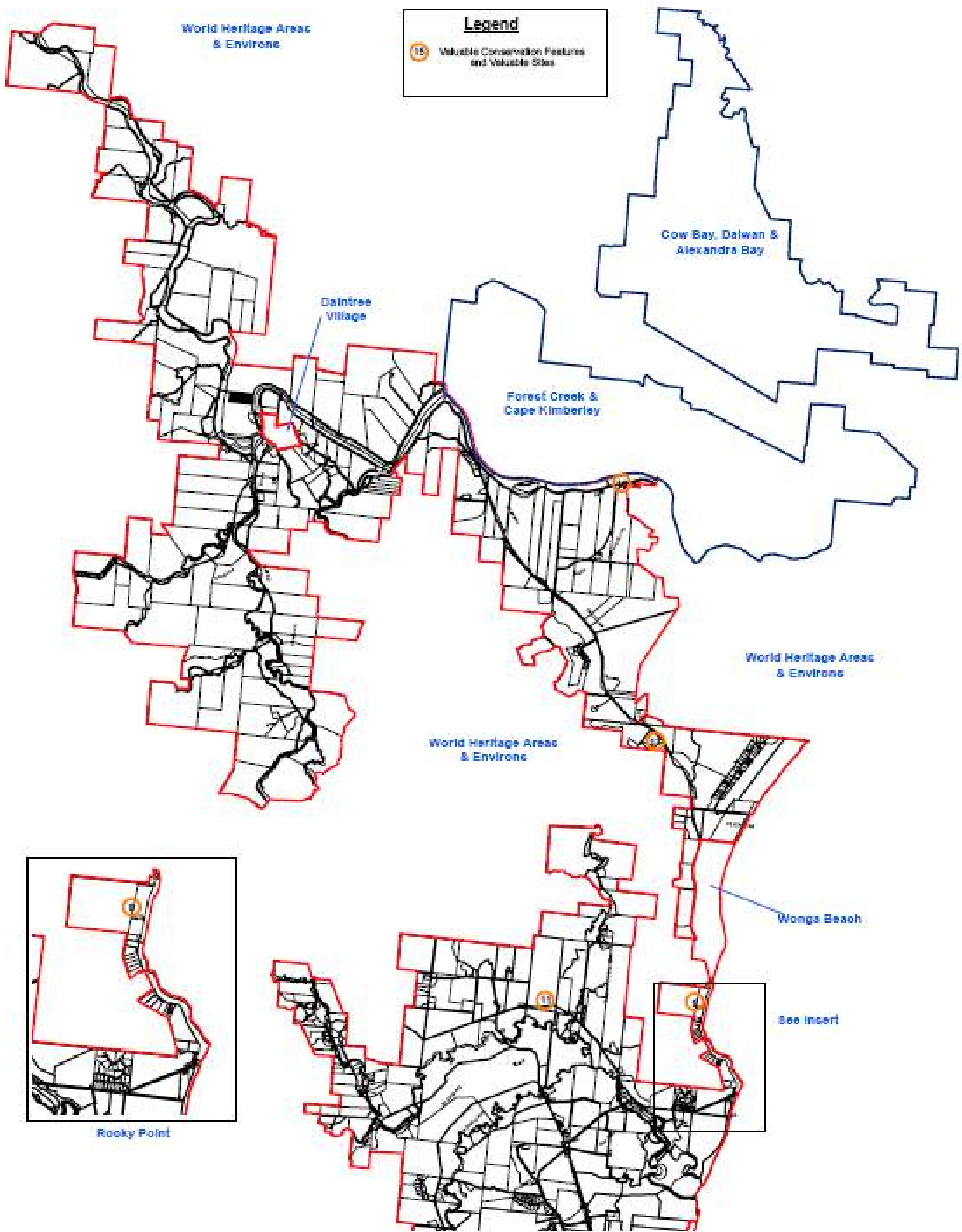
DOUGLAS SHIRE COUNCIL
 This is and shall remain the property
 of the Douglas Shire Council. Using or copying
 this document or any part of it without specific
 authorisation is absolutely prohibited.
 NOT TO SCALE
 P.O. Box 357 Tel: (07) 4099 9450
 Mossman, Qld. 4873 Fax: (07) 4098 2902



Douglas Shire Council
 Overlay - Acid Sulfate Soils
 Rural Areas & Rural Settlements Locality - Sheet 2



Date: August 2006
 Author: GCM
 Map No. R2(b)



Legend
 18 Valuable Conservation Features and Valuable Sites



Rocky Point

DOUGLAS SHIRE COUNCIL
 This is and shall remain the property
 of the Douglas Shire Council. Using or copying
 this document or any part of it without specific
 authorisation is absolutely prohibited.
 NOT TO SCALE
 P.O. Box 357 Tel: (07) 4096 8460
 Mackay, Qld. 4873 Fax: (07) 4096 2902

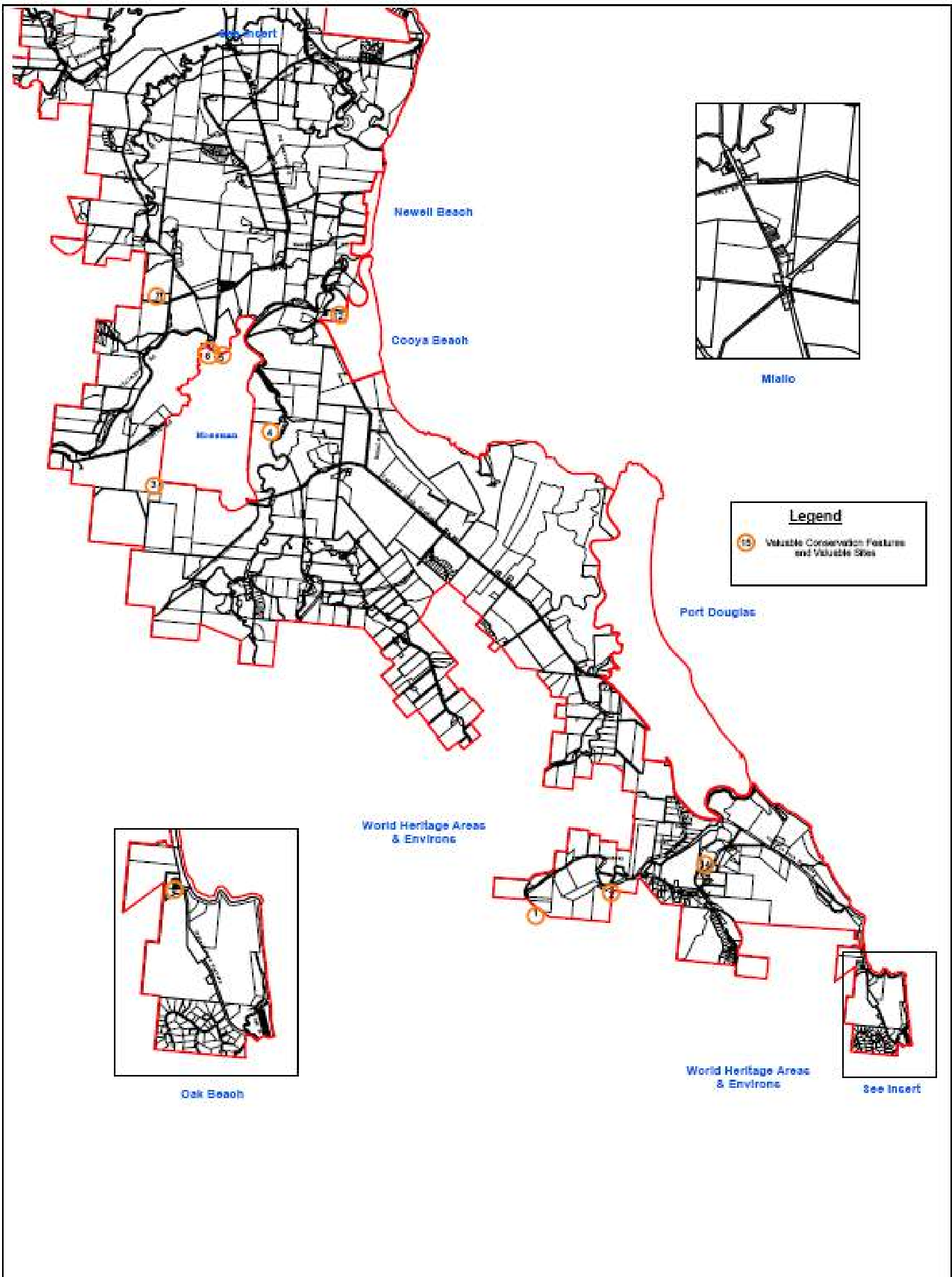


Douglas Shire Council

Overlay - Cultural Heritage & Valuable Sites
 Rural Areas & Rural Settlements Locality - Sheet 1



Date: August 2008
 Author: GJK
 Map No. R3(a)



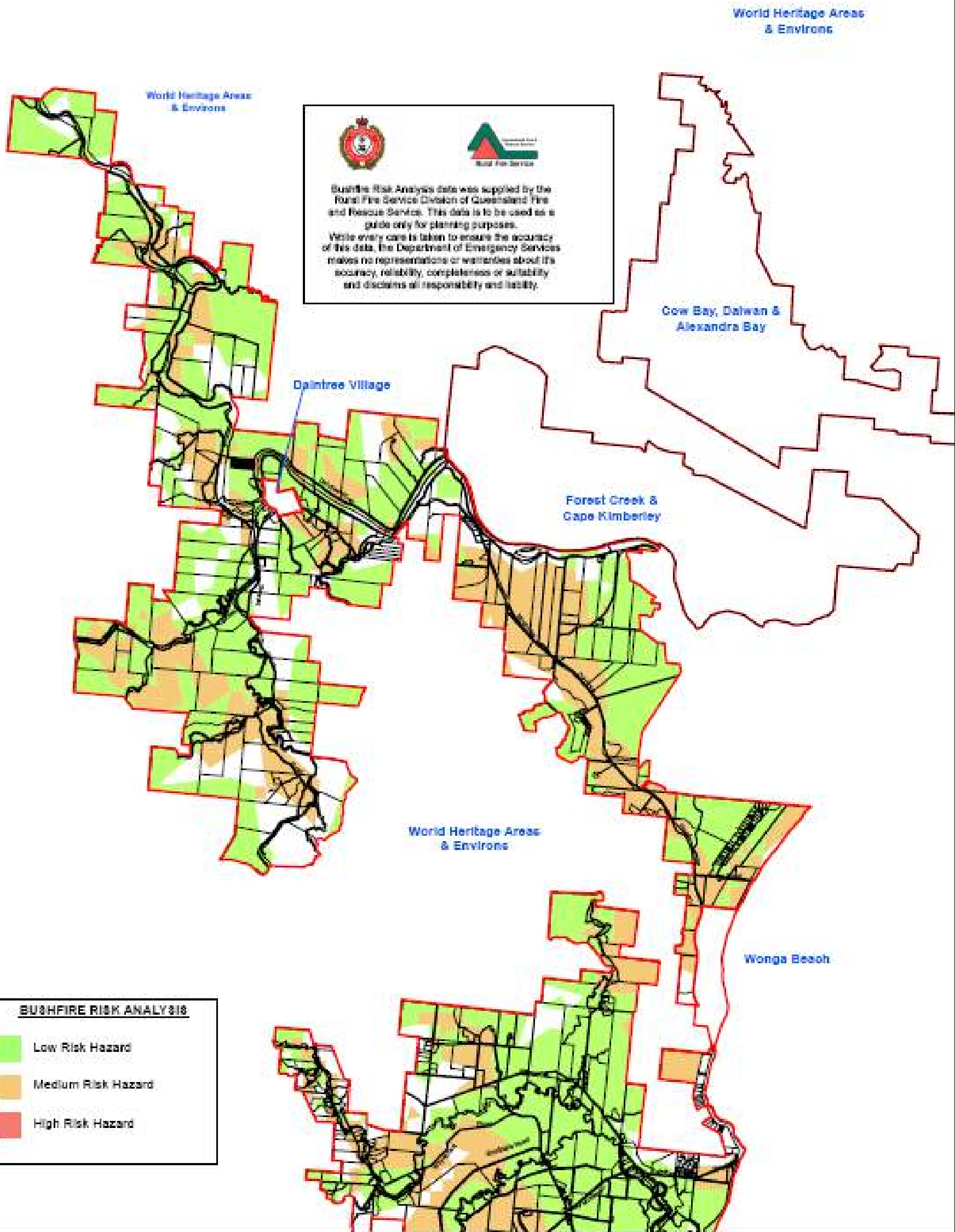
DOUGLAS SHIRE COUNCIL
 This is and shall remain the property
 of the Douglas Shire Council. Using or copying
 this document or any part of it without specific
 authorisation is absolutely prohibited.
 NOT TO SCALE
 P.O. Box 357 Tel: (07) 4066 9450
 Moesman, Qld. 4873 Fax: (07) 4066 2600



Douglas Shire Council
 Overlay - Cultural Heritage & Valuable Sites
 Rural Areas & Rural Settlements Locality - Sheet 2



Date: August 2006
 Author: GDK
 Map No. R3(b)



BUSHFIRE RISK ANALYSIS

- Low Risk Hazard
- Medium Risk Hazard
- High Risk Hazard

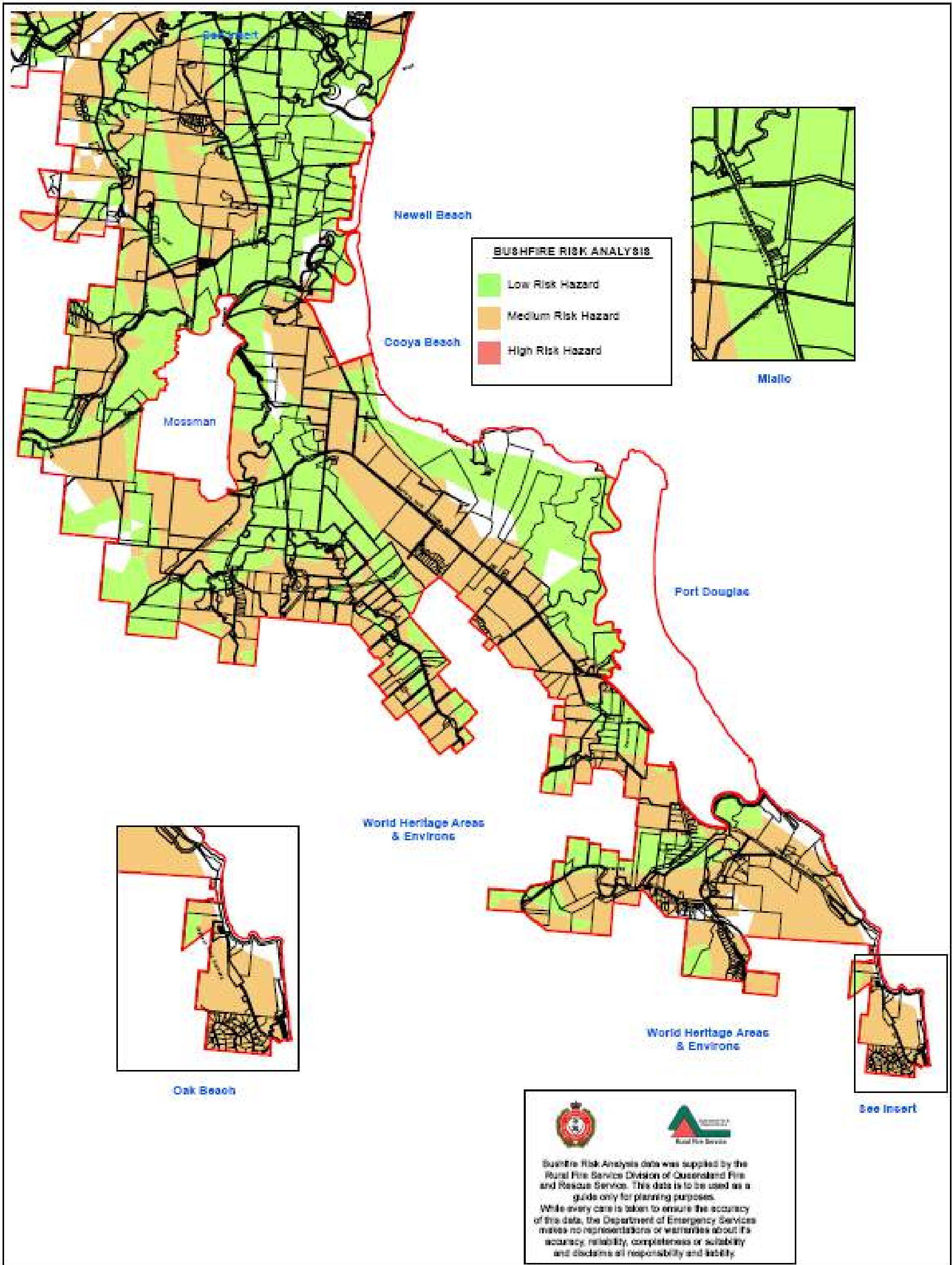
DOUGLAS SHIRE COUNCIL
 This is and shall remain the property of the Douglas Shire Council. Using or copying this document or any part of it without specific authorization is absolutely prohibited.
 NOT TO SCALE
 P.O. Box 167 Tel: (07) 4399 9450
 Mossman, Qld., 4873 Fax: (07) 4399 2902



Douglas Shire Council
 Overlay - Natural Hazards
 Rural Areas & Rural Settlements Localities - Sheet 1



Date: August 2009
 Author: GOK
 Map No. R5(a)



DOUGLAS SHIRE COUNCIL
 This is and shall remain the property
 of the Douglas Shire Council. Using or copying
 this document or any part of it without specific
 authorisation is absolutely prohibited.
 NOT TO SCALE
 P.O. Box 367 Tel: (07) 4099 9450
 Mossman, Qld., 4875 Fax: (07) 4099 2902



Douglas Shire Council
 Overlay - Natural Hazards
 Rural Areas & Rural Settlements Locality - Sheet 2



Date: August 2006
 Author: GDM
 Map No. R5(b)