

## Meeting #6

Date: Thursday 9 May 2024  
Venue: Via Teams  
Time: 9am – 9:30am

### Attendees:

Abi Ralph, Chair  
Claudia Brassard, Principal Engineer, DSC  
Gaye Scott, Recovery Communications DSC  
Jacklyn Kiernan – Cape Trib Camping  
Andrew Heweston – Noah Creek [albeit late!]

### Apologies

Lawrence Mason, Cape Tribulation  
Cole Claxton, Cape Trib  
Robyn Guedes, Bloomfield  
Brett Grainger, Ferry  
Chris Jones – Reef Unlimited  
Steve Sponberg – Daintree Coast 360

## Minutes

### Road Update – North to South

#### Degarra

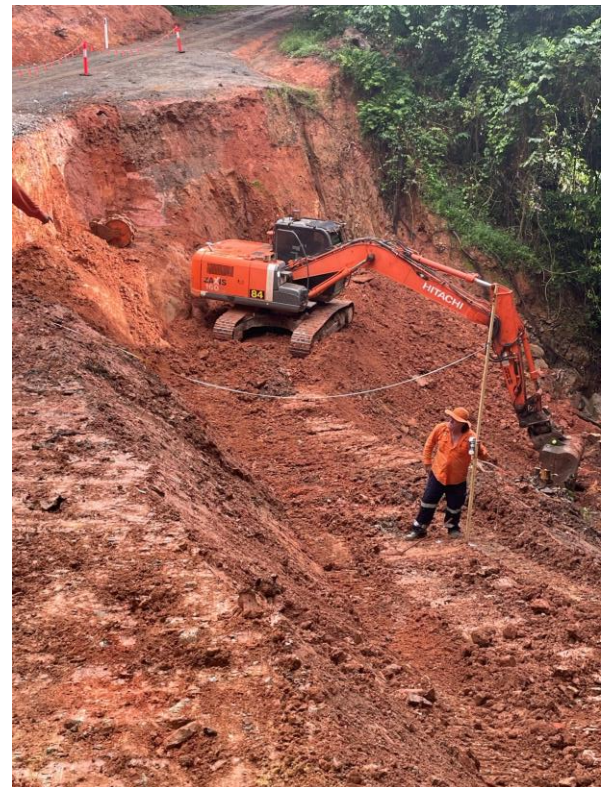
- Access to properties on Evergreen Road in Degarra is nearly complete. Dry weather is required for roller to gain access to finalise the work.

#### Cape Tribulation Bloomfield Road

- Works are not quite complete on Site 18 on the Cape Tribulation Bloomfield Road, but there's been significant progress. The majority of works to the south of site 18 are substantially complete. See below before and after pictures.



Site 18 progress



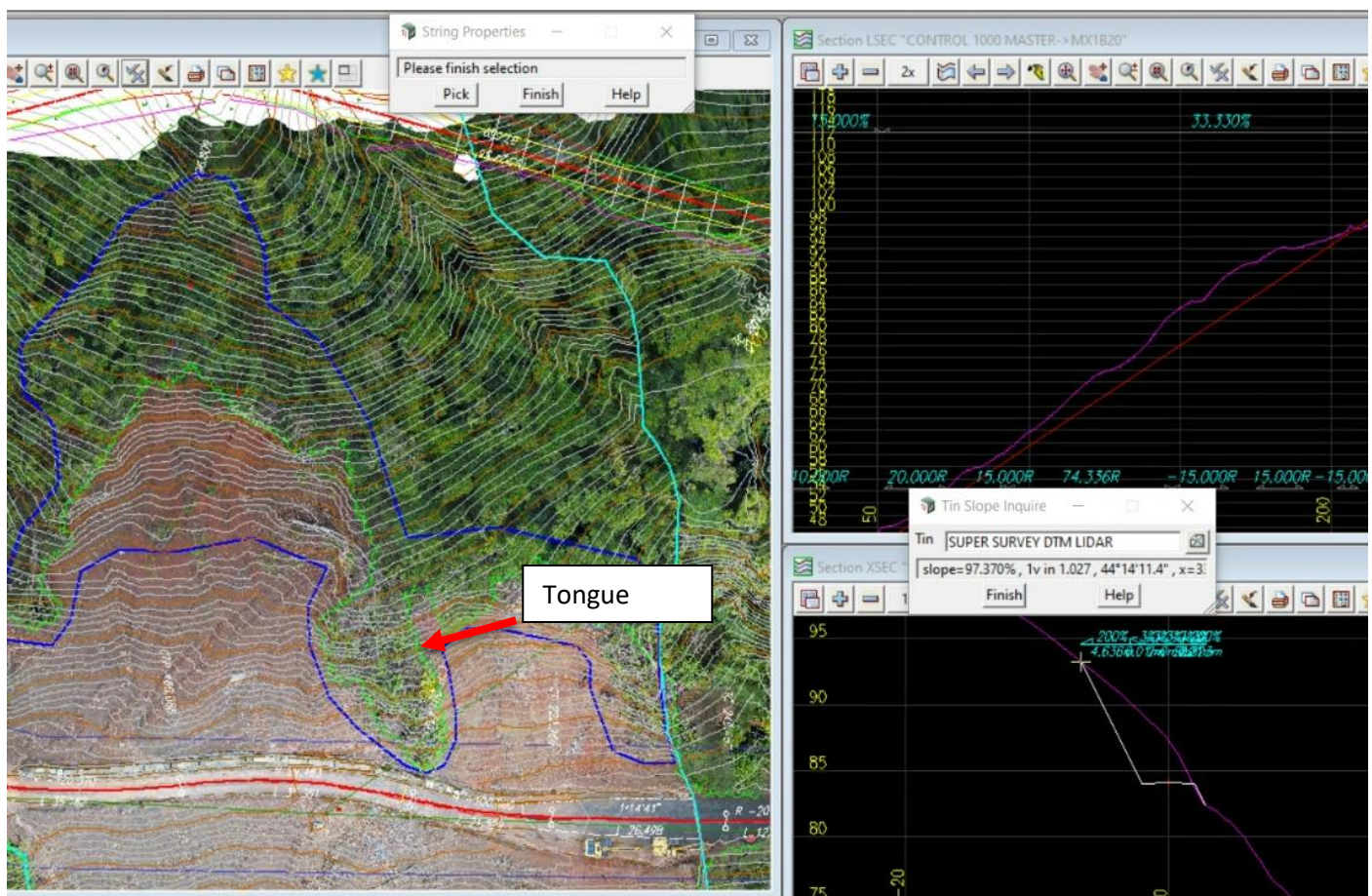
## Noah Range

### Update on monitoring equipment

- Container with the SSR-XT 3D Real Aperture Radar is due to arrive in Mossman on the 9<sup>th</sup> or 10<sup>th</sup> May.
- Groundprobe technician arriving Sunday 12 May
- Deployment, calibration and training 13-15 May after which the road opening times can be extended.
- As advised in previous meetings, this equipment monitors slopes in high risk areas and can detect changes and set off alarms before any major slope movement.
- FNQ Traffic Control has already confirmed it has secured sufficient traffic control personnel to enable the additional hours of Noah Range to be extended until midnight 7 days a week.

### Update on Removal of the Mass:

- Land mass removal options analysis narrowed to preferred solutions. Working with regulatory agencies to gain approvals.
- Assessing any further upslope cracks
- Removal of tongue to be completed as soon as possible subject to approvals (significant trees)
- The debris pile on the pavement (known as the Access Hump) will continue to remain in place and is deemed to be acting as a stabiliser support to the upslope batter.



## Noah Creek Crossing

- The final causeway design is with the regulatory authorities. Once permits and approvals are in place, construction of the causeway can commence.
- Extra traffic control has been stationed at Noah Eco Hut entrance to ensure all vehicles 16 tonnes or under are directed to use the bridge, and to ensure vehicles can safely exit and enter onto Cape Tribulation Road.

## Alexandra Range

### Rain Delays

- Rain has impacted progress. Rain is making the site unsafe and unstable for heavy equipment to operate.
- A total of 10 working days have been impacted and the target completion date of 30 June is at risk. Council and contractors are very aware of how critical this date is.

### Tree Felling

- Abi reported tree felling at one site had impacted the Daintree Discovery Centre. It was not until the noise of chain saws and falling trees alerted her to the proximity of the activity to the Cassowary Circuit which was subsequently closed for the safety of guests. Going forwards, could the contractor advise DDC of an activity before commencing, and the area can be closed ahead of time. The contractors also need to be made aware just how close DDC is to the construction site.

### Vehicles Speeding

- Vehicles are exceeding the speed limit through the construction site on a regular basis. Please respect the limit and help protect the workers on site and please distribute this request to your networks.
- Council has issued a notice to all its staff and all contractors highlighting the rise in wildlife fatalities caused by vehicle collisions. We have reminded everyone that the Daintree is home to abundant wildlife, and it is crucial to adhere to speed limits to ensure their safety.

### Tulip Oak Road Intersection

- Additional traffic control has been deployed to assist movements in and out of Tulip Oak Road.
- CB advised line marking was booked, but rain had made it too wet to complete.

### 12.5 Length Restriction

- CB confirmed it was Site 7 and not site 8, which was the other site which factored into the 12.5 metre length restrictions.
- CB advised that at this site the contractor would use stand up bollards rather than water filled bollards which meant less road space was required.
- Jacklyn asked about zero turn excavators which were not as wide, but could move the same tonnage. CB to confirm if this machinery can be used.
- What CB did explain was there was an option to defer some work at the sites in question until after June and July to allow longer vehicles access during peak tourism season, on-going consultation will occur with the reference group.

## Daintree Ferry

- In Brett Grainger's absence, Gaye advised she has spoken to Brett yesterday and confirmed the coolant system on the ferry had been permanently fixed.

## Communications

- Daily updates still warranted and will continue until at least 30 June.

## Next Meeting

- Thursday 16 May, 9am