

Road Conditions – 10 May 2024.

Captain Cook Highway between the Rex Lookout and Turtle Cove, in Oak Beach, will be closed to all traffic from Wednesday 15 May until Friday 22 July 2024 between 9pm and 4am. There are some exceptions – details on back page.

Cape Tribulation Road is open to all vehicles through to just past Cape Trib Beach House. Beyond that the road is closed to all vehicles.

There are some weight, time and length restrictions:

- Alexandra Range – Open 5am to Midnight. Vehicles up to 12.5 metres in length and up to 25 tonnes. If towing a trailer, caravan or campervan, total length < 12.5 metres.
- Noah Creek Bridge is open to all vehicles 16 tonnes or under. Vehicles above 16 tonnes must use the causeway upstream.
- Noah Range is open from 6am to 7:30pm. Work underway to allow the opening hours to be extended to midnight by 15 May.

Alexandra Range

- Rain has impacted progress on Sites 1, 2 & 3. Rain is making the site unsafe and unstable for heavy equipment to operate.
- A total of 10 working days have been impacted, putting the target completion date of 30 June at risk.
- Geotechnical investigations at other repair sites have found bedrock 800mm below road surface which is good news.

Alexandra Range

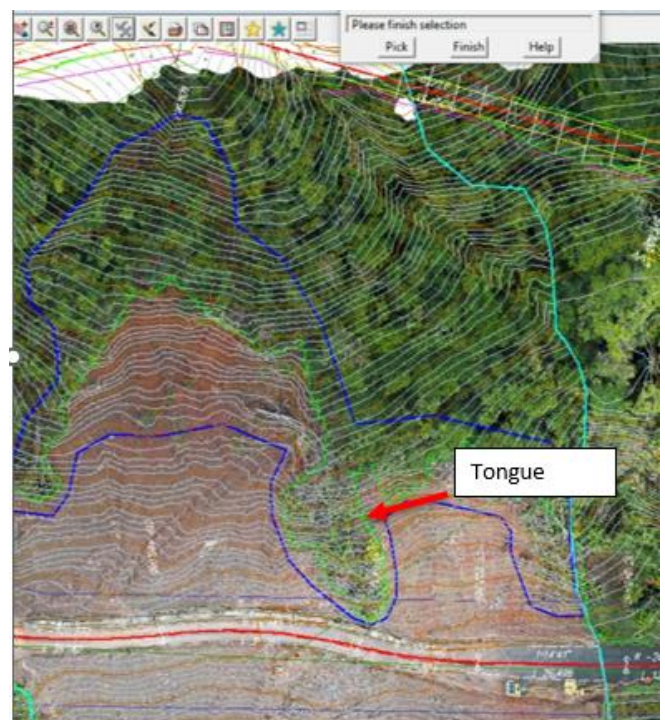


Noah Range

- Container with the SSR-XT 3D Real Aperture Radar arrived in Mossman today.
- Groundprobe technician arriving Sun 12 May.
- Deployment, calibration and training 13-15 May after which the road opening times can be extended.
- The radar equipment will monitor the slope, setting off alarms before any major slope movement, allowing the road to be open at night.
- FNQ Traffic Control has already confirmed it has secured sufficient traffic control personnel to enable the additional hours of Noah Range to be extended until midnight 7 days a week.

Update on Removal of the Mass:

- Land mass removal options analysis narrowed to preferred solutions. Working with regulatory agencies to gain approvals.
- Assessing any further upslope cracks
- Removal of tongue to be completed as soon as possible subject to approvals to remove significant trees.
- The debris pile on the pavement (known as the Access Hump) will continue to remain in place and is deemed to be acting as a stabiliser support to the upslope batter.



Noah Creek

- The final causeway design is with the regulatory authorities. Once permits and approvals are in place, construction of the causeway can commence.
- Extra traffic control has been stationed at Noah Eco Hut entrance to ensure all vehicles 16 tonnes or under are directed to use the bridge, and to ensure vehicles can safely exit and enter onto Cape Tribulation Road.

Cape Tribulation Bloomfield Road

The weather has been relatively kind over the past week, and contractors remain on track to complete repairs to be able to have the 4WD road open by 30 June.

The northern team has made good progress, addressing the majority of sites from Zig Zag intersection down to Woobadda Creek, and have commenced works on a number of sites between Woobadda and Donovan's Range.

The southern team has also made good progress. Works are not quite complete on site 18 but things are much improved there which is a relief. The majority of works to the south of site 18 are substantially complete.

China Camp Road

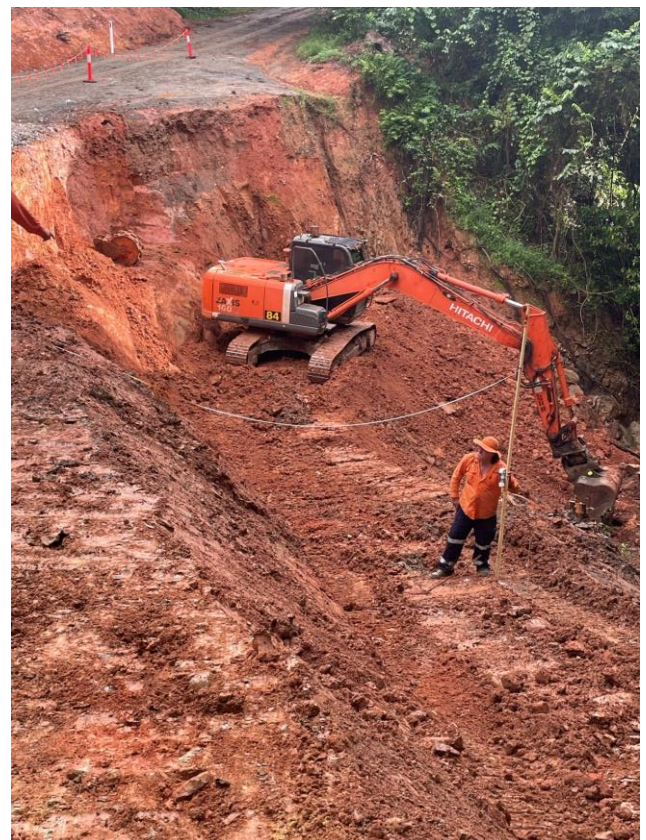
Machinery is working on the northern end of China Camp Road towards China Camp. The grader has made it passed Yard Creek culverts.

Further along, the approaches and crossing at Watermelon Creek have been cleared and reinstated with some rock and gravel.

The Contractor has progressed about 10 km towards China Camp from the top of the concrete, which is good progress given the wet weather and challenging logistics



Before



After

Zig Zag

In the last update Zig Zag Road on the northern side of the Meg Crossing still had a deep washout requiring a pipe and gravel. This was completed this today.

Southern approach of the Meg Crossing is still inaccessible due to trees and debris that will be removed when we can access the area from China Camp Road.

Community Reference Group

Minutes of all meetings are published on Council's website. Follow the link [Reference Group Meeting Notes 9 May 2024](#) and click on View Latest Meeting Notes button.

Daintree Ferry

Loaded Construction Vehicles

Last week we published that the ferry deck was 42 metres long and 12 metres wide. The ferry deck is 9 metres wide.

Detailed Maps

The Department of Transport has produced detailed maps showing all the repair sites along the length of Cape Tribulation Bloomfield Road. They may be viewed or downloaded here: https://douglas.qld.gov.au/download/community_engagement/Cape-Tribulation-Road-and-Cape-Tribulation-Bloomfield-Road-Repair-Sites.pdf



Cape Tribulation Bloomfield Road

Captain Cook Highway From Transport and Main Roads (TMR)

To expedite repairs on the Captain Cook Highway, a section between the Rex Lookout and Turtle Cove, Wangetti, will be closed to all traffic from **Wednesday 15 May until Friday 22 July 2024 between 9pm and 4am.**

Traffic will be let through the roadworks site from both ends at **11pm and 1.30am.**

Full closures will occur on the nights of Sunday 19 May and Monday 20 May where the scope of works will mean traffic cannot be let through.

No night works will occur on the following dates:

- Friday 24 May to Sunday 26 May – Road will remain open for Port Douglas Carnivale
- Saturday 1 June
- Saturday 8 June
- Saturday 15 June – Road will remain open to allow access ahead of the Ironman event.
- Sunday 16 June – Changed traffic conditions and closures will be in place. For more information on these see the Ironman website. Works will resume Monday 17 June.
- Saturday 22 June
- Saturday 29 June
- Saturday 6 July

TMR anticipates further full closure dates may be required. The dates of full closures are dependent on progress of works, weather, materials supply, and construction conditions.

Road users may subscribe to [SMS traffic alerts](#) for the Captain Cook Highway to be notified of changed traffic conditions or email cairns.office@tmr.qld.gov.au to request to be added to the Captain Cook Highway email database.

If you require further information about works on Captain Cook Highway, please email cairns.office@tmr.qld.gov.au or call the Cairns Office on 4045 7144.