

## Updates

### Alexandra Range

#### Current Works

- Site 1 – completed except for some minor defects
- Site 2 – contractor is aiming for completion by end of September 2024
- Site 3 – this is the problematic site, and contractors are aiming for completion early October

#### Upcoming Works

- Tenders for the design and construction of sites 8a, 9, 10, 11 closed 6 September.
- Preferred tenderer has been advised.
- Tenders for the design and construction of sites 3b, 4, 5, 6, 7, 8 tender closed 11 September.
- Council is working towards awarding this tender this week.

### Noah Range Landslip

- Tender has been awarded to HEH Civil.
- The prestart meeting was held 19 September.
- Council is waiting on necessary documentation prior to handing over Possession of Site.
- Traffic control at the Noah Range which is currently operated by Council will transfer to HEH Civil once construction commences.
- HEH Civil is aiming to make the landslip safe / stable prior to the wet season.

### Noah Creek Bridge

- The structural report on the bridge has been received and there is no change to the loading.
- The bridge will remain in place for this wet season with construction of a new bridge likely to be April/May 2025.

### Noah Creek Heavy Vehicle Causeway

- After just 40ml of rain, the Noah Creek Heavy Vehicle Causeway was washed out.
- It is now repaired, and Council is reviewing different options to make it more effective.

## Road Conditions – 25 September 2024

**Cape Tribulation Road** is open to all vehicles through to just past Cape Trib Beach House.

There are some weight, time and length restrictions.

- Alexandra Range – Open 5am to Midnight. If towing a trailer, caravan or campervan, total length cannot exceed 15.1 metres.
- Rigid vehicles cannot exceed 12.5 metres in length.
- Maximum weight of vehicles is 25 tonnes.
- Noah Creek Bridge has a weight restriction of 16 tonnes.
- Noah Causeway open for vehicles over 16 tonnes.
- Noah Range – Open 5am to Midnight.

**Cape Tribulation Bloomfield Road** is open to 4WD vehicles.

- The road has deteriorated since opening late June and travellers are advised to take care to avoid damaging their vehicle.
- There are no weight or time restrictions, however the road is unsuitable for towing trailers, campervans or caravans. Douglas Shire Council has reinforced the messaging around no caravans or trailers.

**Zig Zag Road** open to 4WD vehicles. Road is suitable for towing.

**China Camp Road** open to 4WD vehicles only. There is a 5 tonnes load limit on the concrete section from Ayton.

**Ten Mile Road** is open to 4WD vehicles only.

**CREB Track** is open to 4WDs - experienced drivers only.

- A separate database for notifications about the causeway has been created.
- Please contact Gaye Scott to register for alerts.

---

## Cape Tribulation Bloomfield Road

- A tender package is being prepared for the permanent repairs.
- Construction is likely to occur after the 2024/25 wet season.
- Holding works will continue through the wet season.
- Council will be installing Give Way signs at two locations where the road narrows.
- The hairpin at Luana Creek will have Road Narrow signs and Call Point signs have been installed asking travellers to use Channel 40.

## CREB Track

- The track opened 9 September.

## Unsealed Road Repairs – Daintree River to Cape Tribulation

- Gulf Civil Pty Ltd has been awarded the \$4,325,344 contract for the repair of the damaged sections of unsealed roads between the Daintree River and Cape Tribulation.
- The scheduled start date is 30 September 2024.

## Ferry Update

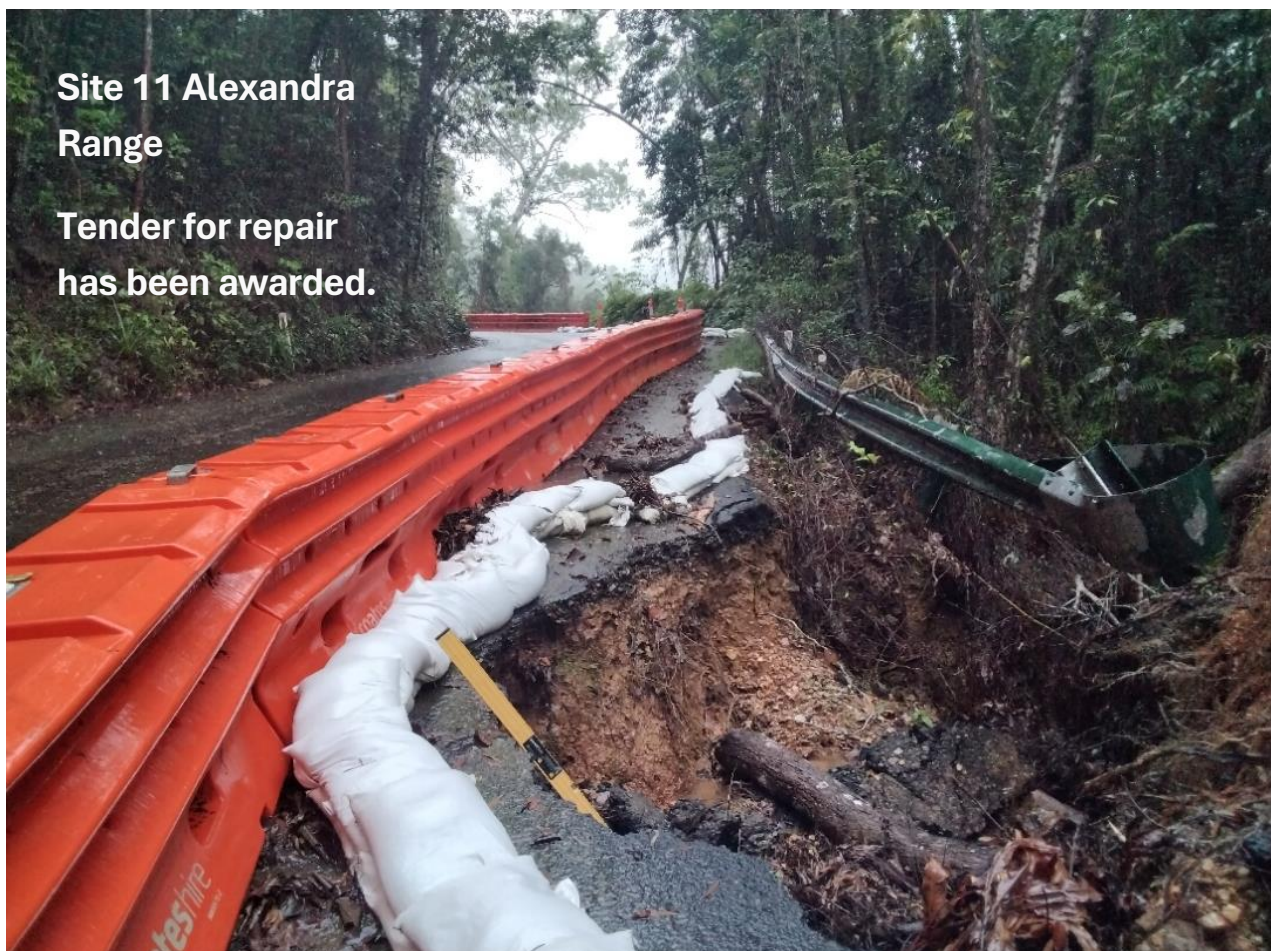
- Council will consider different ferry operating models at a Special Council meeting scheduled for 10am Tuesday, 15 October 2024.
- People may attend in person at the Council Chambers, or the meeting will be live-stream. Link is here [Council Meeting Live Stream | Douglas Shire Council](#)

## Wujal Wujal Jump Up

- As many are aware, the first section of China Camp Road within Wujal Wujal Shire's jurisdiction and has a 5-tonne weight limit.
- Representatives from Douglas Shire Council and Wujal Wujal Aboriginal Shire Council met this week.
- The aim is for both Council to collaborate and pool resources to get repair works completed.

## Daintree Coast Road Reference Group

The meeting notes from last week's meeting have been published on Council's website - [19.9.2024 Meeting Notes](#)



**Site 11 Alexandra Range**

**Tender for repair has been awarded.**