

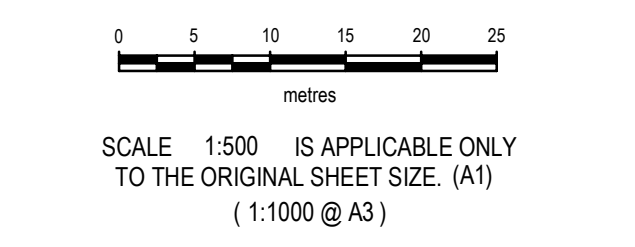
**CERTIFICATION**  
 RPS Australia East Pty Ltd (ACN 140 292 762) certifies that the locations, surface and invert levels of the sewerage infrastructure shown on this plan have been surveyed in accordance with the requirements of the QLD DC Development Manual and, to the best of the Surveyor's knowledge and belief, the Important Note below is true and correct.

**COPY SIGNED  
 AUTHORIZED  
 DELEGATE**

**IMPORTANT NOTE**

- This plan was prepared for the sole purposes of the client for the specific purpose of recording the infrastructure for the Douglas Shire Council. This plan is strictly limited to the Purpose and does not apply directly or indirectly and will not be used for any other application, purpose, use or matter. The plan is presented without the assumption of a duty of care to any other person (other than the Client) (Third Party) and may not be relied on by Third Party.
- RPS Australia East Pty Ltd will not be liable (in negligence or otherwise) for any direct or indirect loss, damage, liability or claim arising out of or incidental to:
  - Third Party publishing, using or relying on the plan;
  - RPS Australia East Pty Ltd relying on information provided to it by the Client or a Third Party where the information is incorrect, incomplete, inaccurate, out-of-date or unreasonable;
  - any inaccuracies or other faults with information or data sourced from a Third Party;
  - RPS Australia East Pty Ltd relying on surface indicators that are incorrect or inaccurate;
  - the Client or any Third Party not verifying information in this plan where recommended by RPS Australia East Pty Ltd;
  - lodgement of this plan with any local authority against the recommendation of RPS Australia East Pty Ltd;
  - the accuracy, reliability, suitability or completeness of any approximations or estimates made or referred to by RPS Australia East Pty Ltd in this plan.
- Without limiting paragraph 1 or 2 above, this plan may not be copied, distributed, or reproduced by any process unless this note is clearly displayed on the plan.
- Scale shown is correct for the original plan and any copies of this plan should be verified by checking against the bar scale.
- Type and size of mains, locations and levels of house connection branches and ends have been provided by the constructing contractor and have not been verified. Other information has been obtained from design and construction information [provided by Third Parties] and should be checked before use.
- The positions of some services shown on this plan have been exaggerated for drawing clarity purposes. Dimensions shown take precedence over scaled position.

**NOTES**  
 Level Datum: AHD  
 Origin of Levels: PSM 100497  
 RL 10.110  
 Meridian: MGA zone 55 vide PR120568-1  
 PSM 96532-100497  
 E 325785.784  
 N 8179385.049  
 Origin of Coordinates: PSM 100497  
 E: 325992.920  
 N: 8179376.360



PROJECT MANAGER D. PINKHAM		SURVEYED	
COMPILED RMS		CAD REF PR135396-2c.DWG	
SHEET SIZE <b>A1</b>	SHEET OF 1	SHEETS 1	XR PR135396-1c.DWG

**RPS**  
 RPS Australia East Pty Ltd  
 ACN 140 292 762  
 10/9 Pioneer Ct  
 CRAIGLIE QLD 4877  
 PO Box 355  
 MOSSMAN QLD 4873

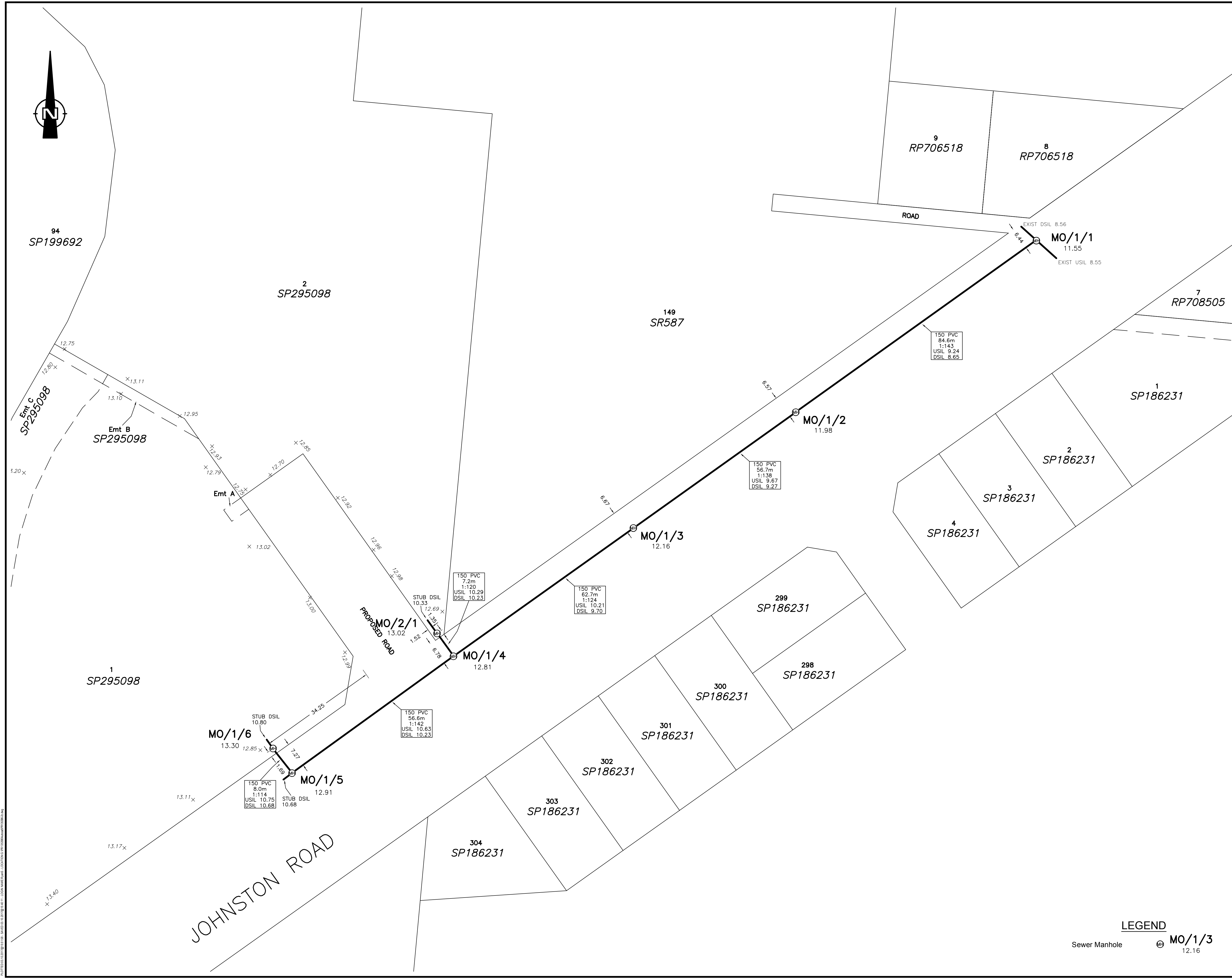
© COPYRIGHT PROTECTS THIS PLAN  
 Unauthorised reproduction or amendment  
 not permitted. Please contact the author.

T +61 7 4098 1148  
 F +61 7 4098 1814  
 W rpsgroup.com.au

**NORTHERN CIVIL**

**MOSSMAN AGED CARE  
 EXTERNAL WORKS  
 AS-CONSTRUCTED  
 SEWER  
 JOHNSTON ROAD**

SCALE <b>1:500</b>	DATE 31/08/2017	DRAWING NO. <b>PR135396-2</b>	ISSUE <b>C</b>
-----------------------	--------------------	----------------------------------	-------------------



**LEGEND**  
 Sewer Manhole MO/1/3  
 12.16

R:\PROJECTS\135396-1 AS-CONSTRUCTED\135396-1c.DWG (1:500) (A1) (1:1000 @ A3)