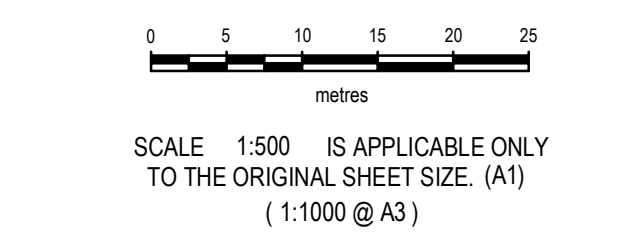


CERTIFICATION
 RPS Australia East Pty Ltd (ACN 140 292 762) certifies that the locations of the water infrastructure on this plan have been obtained in accordance with the requirements of the FNRQC Guidelines for the preparation and use of the best of our knowledge and skill. This certification is not intended to be a warranty or guarantee of accuracy.

COPY SIGNED AND AUTHORIZED DELEGATE

- IMPORTANT NOTE**
- This plan was prepared for the sole purposes of the client for the specific purpose of recording the infrastructure for the Douglas Shire Council. This plan is strictly limited to the Purpose and does not apply directly or indirectly and will not be used for any other application, purpose, use or matter. The plan is presented without the assumption of a duty of care to any other person (other than the Client) ("Third Party") and may not be relied on by Third Party.
 - RPS Australia East Pty Ltd will not be liable (in negligence or otherwise) for any direct or indirect loss, damage, liability or claim arising out of or incidental to:
 - Third Party publishing, using or relying on the plan;
 - RPS Australia East Pty Ltd relying on information provided to it by the Client or a Third Party where the information is incorrect, incomplete, inaccurate, out-of-date or unreasonable;
 - any inaccuracies or other faults with information or data sourced from a Third Party;
 - RPS Australia East Pty Ltd relying on surface indicators that are incorrect or inaccurate;
 - Without limiting paragraph 1 or 2 above, this plan may not be copied, distributed, or reproduced by any process unless this note is clearly displayed on the plan.
 - Scale shown is correct for the original plan and any copies of this plan should be verified by checking against the bar scale.
 - Stop valves, hydrants and other visible surface indicators have been located by survey. Other information has been obtained from design and construction information [provided by Third Parties] and should be checked before use.
 - The positions of some services shown on this plan have been exaggerated for drawing clarity purposes. Dimensions shown take precedence over scaled position.

NOTES
 Level Datum: AHD
 Origin of Levels: PSM 100497
 RL 10.110
 Meridian: MGA zone 55 vide PR120568-1
 PSM 96532-100497
 E 325785.784
 N 8179385.049
 Origin of Coordinates: PSM 100497
 E: 325992.920
 N: 8179376.360



AMENDMENTS	
A:	RMS: ADDED NEW DETAIL
PROJECT MANAGER	SURVEYED
D. PINKHAM	
COMPILED	CAD REF
RMS	PR135396-3c.DWG
SHEET SIZE	135396-1 As-constructed access.mxd
A1	OF SHEETS 1
	XR PR135396-1c.DWG

RPS
 RPS Australia East Pty Ltd
 ACN 140 292 762
 10/9 Pioneer Ct
 CRAIGLIE QLD 4877
 PO Box 355
 MOSSMAN QLD 4873

© COPYRIGHT PROTECTS THIS PLAN
 Unauthorised reproduction or amendment
 not permitted. Please contact the author.

T +61 7 4098 1148
 F +61 7 4098 1814
 W rpsgroup.com.au

NORTHERN CIVIL
MOSSMAN AGED CARE
EXTERNAL WORKS
AS-CONSTRUCTED
STORMWATER
JOHNSTON ROAD

LEGEND

Drainage Pipe U/G	-----
Catch Drain	-----
Sub-surface Drain
Flushing Point	o I.O.
Top of Bank	-----
Toe of Bank	-----

SCALE	DATE	DRAWING NO.	ISSUE
1:500	31/08/2017	PR135396-3	C