

5.12. NDRRA PROGRESS REPORT #12 - DECEMBER 2015

REPORT AUTHOR(S): Scott Hahne, NDRRA Project Engineer
GENERAL MANAGER: Paul Hoye, General Manager Operations
DEPARTMENT: Infrastructure Services

RECOMMENDATION

That Council notes the results achieved to date and the future projections contained in the 2014 NDRRA PCG Monthly Report 12 – December 2015

EXECUTIVE SUMMARY

Monsoonal flooding between 7-9 February 2014 and during Tropical Cyclone Ita on 11-14 April, 2014 caused extensive damage to existing infrastructure within the Shire. This report details progress to date concerning the restoration program under the Natural Disaster Relief and Recovery Arrangements.

Progress to date consists of:

- Total Funding Approved to Date: \$23,278,069
- Works Complete: 92.8%
- Income to Date: \$19,669,480
- Expenditure to Date: \$21,315,952
- Expenditure into local economy for month of December: \$831,000

BACKGROUND

Between 7-9 February 2014 monsoonal flooding occurred within the Douglas Shire and was followed between 11-14 April 2014 by Tropical Cyclone Ita. Both these events caused extensive damage to Council infrastructure, mainly roads, within the Shire.

Council's Management Team set up a Project Control Group to manage the Natural Disaster Relief & Recovery Arrangements (NDRRA) and assist in the mitigation of project delivery risk to Council.

In accordance with the NDRRA requirements, Douglas Shire Council submitted a number of funding applications to restore the damaged infrastructure and Council has been successful in securing substantial funding.

Current funding arrangements for the completion of the restoration for the damaged assets require the completion of all works by June 2016.

The attached report provides an update of the progress to date with the restoration program.

COMMENT

Council has engaged a Project Engineer, Project Finance Officer and a Traffic Management Officer to assist in the management of projects associated with the NDRRA, including the control of finances and acquittal of funding associated with the restoration of essential assets. Council officers continue to work with officers from the Queensland Reconstruction Authority, consultants, contractors and the community to ensure the successful delivery of all works.

FINANCIAL/RESOURCE IMPLICATIONS

Refer to Attachment 1 - Section 2 for financial implications.

RISK MANAGEMENT IMPLICATIONS

Refer to Attachment 1 – Section 12 for identified risks and mitigation proposals.

SUSTAINABILITY IMPLICATIONS

- Economic:** The reconstruction of damaged essential public infrastructure is necessary to provide safe and useable transport networks for the movement of goods and services, particularly in rural areas. The adequacy and condition of the road networks also relates to the ability of tourists and tourist operators to access the various areas and communities in the Shire.
- Environmental:** Reconstruction of landslips, roads and drainage reduces the environmental impacts caused by heavy rain and erosion.
- Social:** A well maintained and safe road network is vital for ensuring communities are connected and have access to goods, services and community networks.

CORPORATE/OPERATIONAL PLAN, POLICY REFERENCE

This report has been prepared in accordance with the following:

Corporate Plan 2014-2019 Initiatives:

Theme 5 - Governance

5.1.1 - Establish and develop long term financial, resource and infrastructure planning to ensure ongoing capacity to fund operations and capital works programs.

5.1.2 - Implement a robust enterprise risk management culture to identify and manage potential risks.

5.1.3 - Monitor and regularly review procurement practices to ensure legislative compliance and “value for money”.

COUNCIL’S ROLE

Council can play a number of different roles in certain circumstances and it is important to be clear about which role is appropriate for a specific purpose or circumstance. The implementation of actions will be a collective effort and Council’s involvement will vary from information only through to full responsibility for delivery.

The following areas outline where Council has a clear responsibility to act:

Asset-Owner

Meeting the responsibilities associated with owning or being the custodian of assets such as infrastructure.

Part-Funder

Sharing the cost of a program or activity with other organisations.

CONSULTATION

Internal: NDRRA Project Control Group

External: Technical Consultants
Queensland Reconstruction Authority
Transport Industry
Tourism Industry
Indigenous Corporations
Business Industry

Community: Nil

ATTACHMENTS

Attachment 1 2014 NDRRA PCG Monthly Report #12 - December 2015

Contents

1	Glossary.....	3
2	Financial Summary	4
3	Progress During Period.....	8
4	Program (Time and Progress).....	9
5	Workplace Health & Safety	9
6	Traffic Management	9
7	Environmental	9
8	Quality Assurance	9
9	Community Liaison.....	10
10	Local Industry Participation	10
11	Queensland Reconstruction Authority	10
12	Project Risks & Mitigation	11
13	General.....	11
	APPENDIX A – Overall Program	12
	APPENDIX B – Photos.....	14

1 GLOSSARY

CDO	Counter Disaster Operations
GST	Goods & Services Tax
NDRRA	Natural Disaster Relief & Recovery Arrangements
QRA	Queensland Reconstruction Authority
REPA	Restoration of Essential Public Assets

4 PROGRAM (TIME AND PROGRESS)

- Original Date for Practical Completion for entire program – 30 June 2016
- Expected Date of Practical Completion for entire program – May 2016
- Expected Date of Practical Completion for major construction – January 2016

- Summary of Funding Status
 - Additional funding requests to QRA:
 - McDowall Lane landslip additional area

- Summary of Design & Document Program Status:
 - McDowall Lane landslip additional area documentation to proceed once QRA approves funds

- Summary of Tendering Program Status:
 - Nil outstanding

- Summary of Construction Program Status:
 - South Roads Package: 8 roads remaining to complete with rework required on 14 others
 - Landslip Package: McDowall Rd works commenced. Additional rock required due to underwater void.

The current works status program is attached at **Appendix A**

5 WORKPLACE HEALTH & SAFETY

- Incidents to report
 - North Roads Package
 - Nil to report
 - South Roads Package
 - Nil to report

- Actions completed
 - Nil to report

6 TRAFFIC MANAGEMENT

- TGS Applications Submitted – Nil

- Reported Incidents – Nil

7 ENVIRONMENTAL

- Nil to report

8 QUALITY ASSURANCE

- Incidents to report
 - Four roads (of which three had performed adequately to date) became difficult to traverse in 2WD vehicles during the Christmas shutdown period. These roads had been identified previously as being of concern and a wait and see approach had generally been adopted. Following the issues with these four roads a direction to remove and replace has been issued for all 14 roads constructed from a single quarry source. Refer to complaints below. Inadequate rock strength of the gravel components has been determined as the cause.

9 COMMUNITY LIAISON

- A total of 10 communications were received and dealt with in December 2015. Nine were complaints; one was a request for information.
- Six complaints were related to the road surface condition of Whyanbeel Road and Old Forestry Road with the heavy rains over the Christmas period.
- One complaint and one inquiry related to Emmagen Creek bed depth. Bed depth removed by natural causes.
- One related to contractors starting work prior to 7am in Port Douglas and another related to one excessively noisy truck on the Mt Molloy-Mossman Road.
- Engagement activities undertaken
 - Email update advising of upcoming activity in Daintree Village main street and boat ramp and jetty car park area
 - Telephone contact with tour operators using Daintree Village ramp and car park area, and neighbouring residents to advise of changed traffic conditions
 - Several email updates to all accommodation operators and other neighbouring businesses advising of road closure Mudlo/Mowbray/Owen Streets
 - NDRRA Activity Map updated with information
 - Main Council Activity Map updated with NDRRA information
 - Council's Front Line staff notified of details
 - Media release sent out regarding the completion of the road rehabilitation program north of the Daintree River signifying a major milestone for Council's first reconstruction program since it was de-amalgamated from Cairns Regional Council on 1 January 2014.

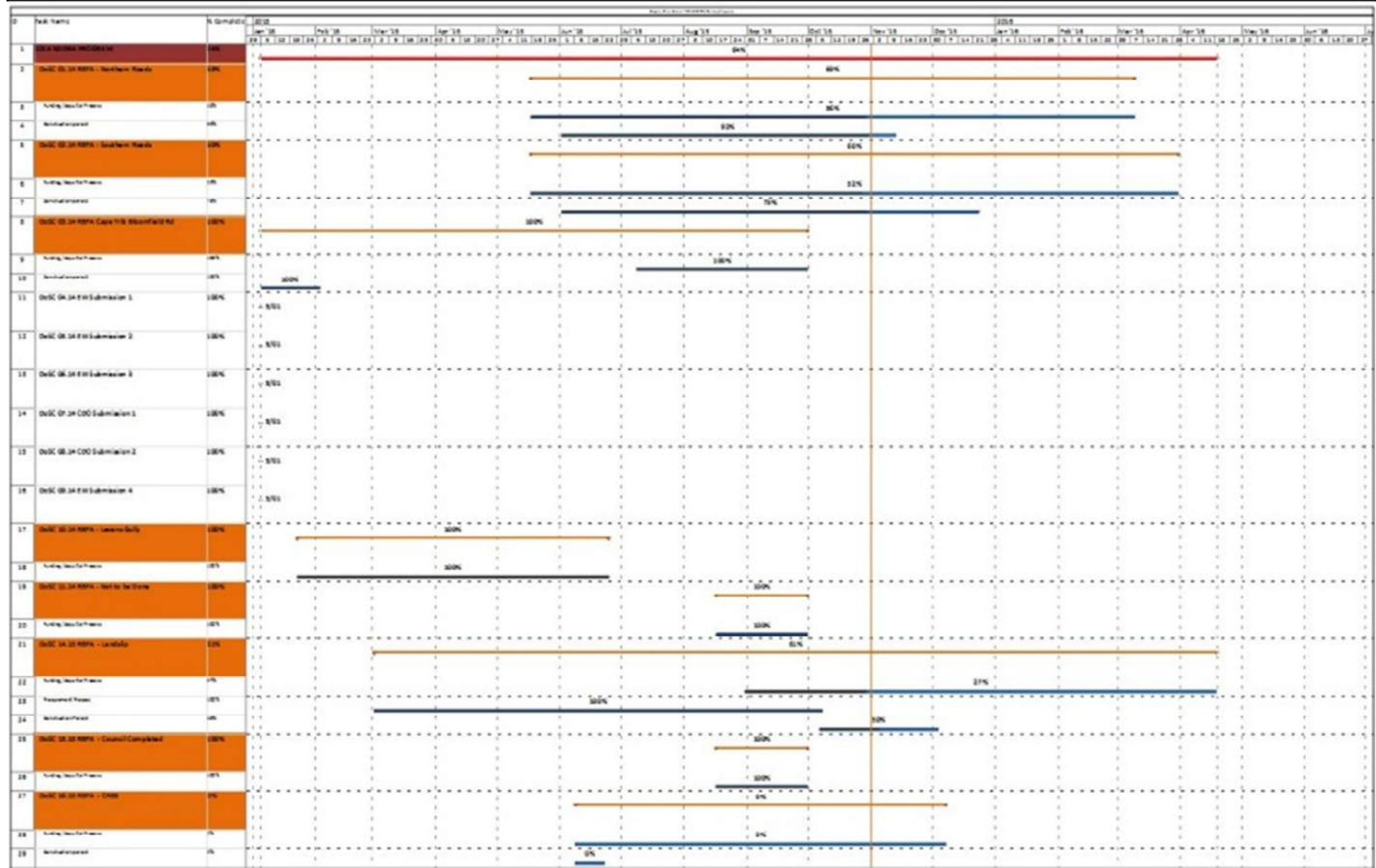
10 LOCAL INDUSTRY PARTICIPATION

During reporting period:

- Local Government Area
 - \$831K on accommodation, wages, fuel, material supply & plant hire
- Regional Area
 - \$378K on wages, subcontractor and material supply
- Other
 - \$7K on materials & parts

11 QUEENSLAND RECONSTRUCTION AUTHORITY

- Hosted two visits from QRA liaison officer;
- Provided progress reporting to QRA



APPENDIX B – PHOTOS



Stabilising works corner Mowbray & Mudlo Streets, Port Douglas



Wilkinson Rd culvert upgrade – temporary access for Christmas shutdown

5.13. CAPITAL WORKS PROGRESS REPORT 2ND QUARTER 2015-2016

REPORT AUTHOR(S): Paul Hoyer, General Manager Operations
DEPARTMENT: Operations

RECOMMENDATION

That Council resolves to:

- 1. receive and note the progress of the Capital Works Program for the 2015 - 2016 financial year; and**
- 2. allocate \$30,000.00 from the Asset Register project to the Dixie Shed project; and**
- 3. allocate \$20,000.00 from the Fire Hydrant Project to the Macrossan Street Bin project.**

EXECUTIVE SUMMARY

Council adopted a capital work budget in excess of ten (10) million dollars for the 2015 – 2016 financial year. Attachment 1 to this report details the progress of the capital works program for those works with a budget of \$15,000.00 or more for the period of 1/7/15-1/2/16.

The majority of works have progressed in line with expectations. A number of completed projects have been finalised under budget, achieving a saving to Council of \$408,000 at the time of writing. This figure will change with some projects running over budget but the expectation is that the whole of the programmed capital works will be delivered within budget.

Overall, the delivery of the 2015 – 2016 capital works program has been satisfactory. As project management skills are expanded across the organisation improved project planning, five year project programs and more efficient project delivery will occur. Savings are already being achieved as a result of improved practices.

During the reporting period concept plans were prepared for Stage 2 of the Daintree Gateway (car-park area) and the Flagstaff Hill Walking Trail. Sealing of three important roads has been substantially completed, these being Borzi, Ryker and Old Forestry Roads.

The Degarra Causeway and Whyanbeel Causeway projects were completed, with the shortfall in budget for the Degarra Causeway (\$345,000.00) being addressed through Roads to Recovery funding from the State Government.

Significant and major work has occurred in the Water and Wastewater area with the finalisation of a number of designs and the awarding of contracts, particularly the \$700,000 sewer relining contract.

Key areas of concern remain in the Capping and Leachate Management System for the Killaloe Landfill. Council staff are liaising with consultants and the Department of Environment and Heritage Protection to determine the most sustainable solutions.