

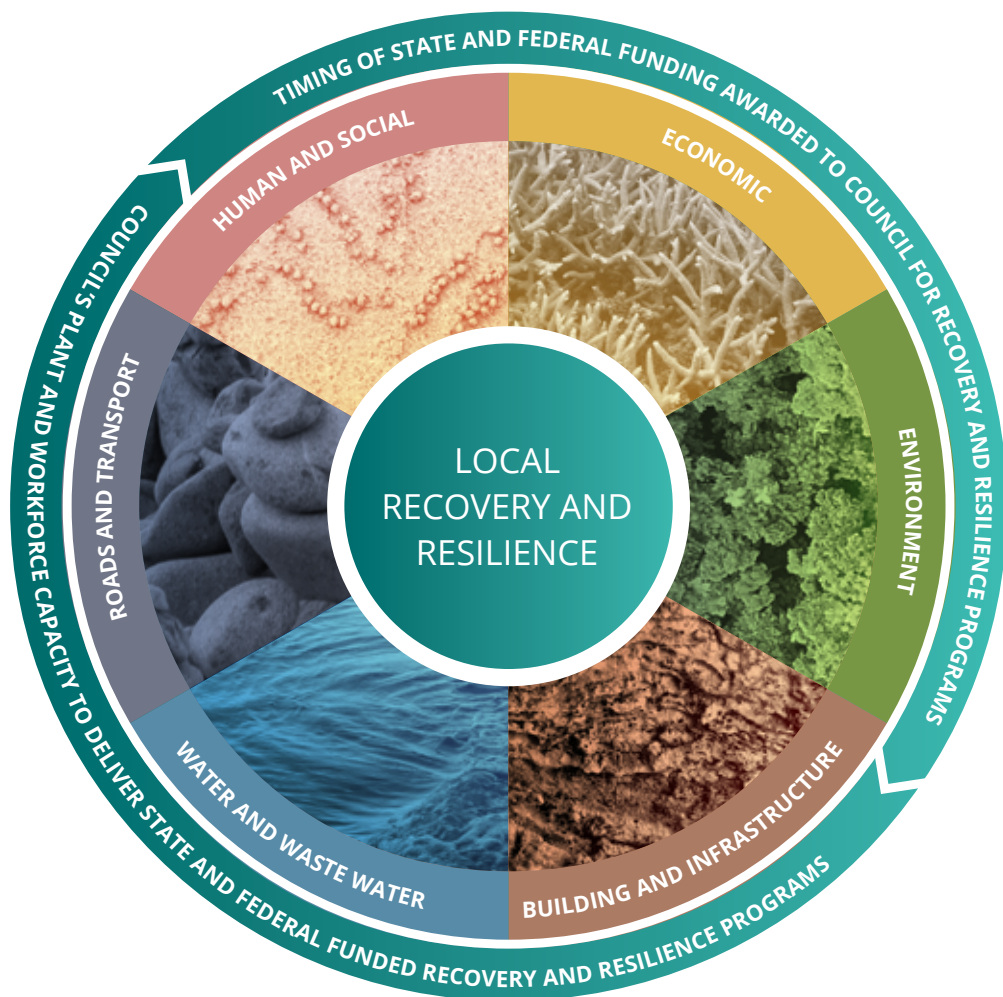
# Environment

## Recovery Resilience Functional Group

### 1. Purpose

The Environment Recovery and Resilience Functional Group supports the Douglas Recovery Resilience Group (DRRG) by coordinating disaster recovery operations and strategic planning for environmental resilience across the Douglas Shire.

The Environment Recovery and Resilience Functional Group aims to minimise the adverse impacts of disasters on natural systems and ensure the protection, rehabilitation, and long-term sustainability of the region's unique environmental values.



#### Environment

Responsible for minimising the adverse impacts of disasters on natural systems and ensure the protection, rehabilitation, and long-term sustainability of the region's unique environmental values.

## 2. Functions

The Environment Recovery and Resilience Functional Group will:

- Support the development and maintenance of the Douglas Recovery Sub-Plan.
- Coordinate local environmental recovery operations during and following disaster events.
- Identify, assess, and monitor environmental impacts (e.g. erosion and habitat loss).
- Liaise with key agencies and networks to advocate for restoration efforts.
- Support ecosystem-based disaster risk reduction and climate adaptation strategies.
- Promote the use of green infrastructure and environmentally sustainable design in recovery.
- Involve local communities, Traditional Owners, and environmental groups in planning and delivery.
- Support integration of environmental initiatives within broader recovery functions (e.g. infrastructure, economic, human and social).

## 3. Membership

Core membership may include representatives from:

- Douglas Shire Council (Environment and Planning)
- Local organisations who deliver environmental services (e.g. rangers)
- Relevant government agencies and governing bodies
- Supporting members may be invited by the Chair as required, based on the type and scale of the event.

## 4. Governance and Reporting

The Environment Recovery and Resilience Functional Group is a functional subgroup of the DRRG. It is chaired by the Manager Planning and Environment (or delegate) and reports directly to the DRRG Chair.

The Chair may nominate a deputy or acting chair as required.

All correspondence should be directed through:

**[environment.recovery@douglas.qld.gov.au](mailto:environment.recovery@douglas.qld.gov.au)**

## 5. Meetings

- Minimum of two meetings annually (e.g. before and after disaster season)
- Additional meetings convened during recovery operations
- Minutes and action items maintained by a nominated Secretariat and circulated within 7 days
- The group will seek to make decisions by consensus of members present. Where consensus cannot be reached, the chair will determine the most appropriate course of action.
- Unresolved issues escalated to the DRRG Chair

## 6. Principles

The Environment Recovery and Resilience Functional Group will operate in accordance with the **National Principles for Disaster Recovery:**

- Understand the Context
- Recognise Complexity
- Use Community-led Approaches
- Coordinate all Activities
- Communicate Effectively
- Recognise and Build Capacity

