

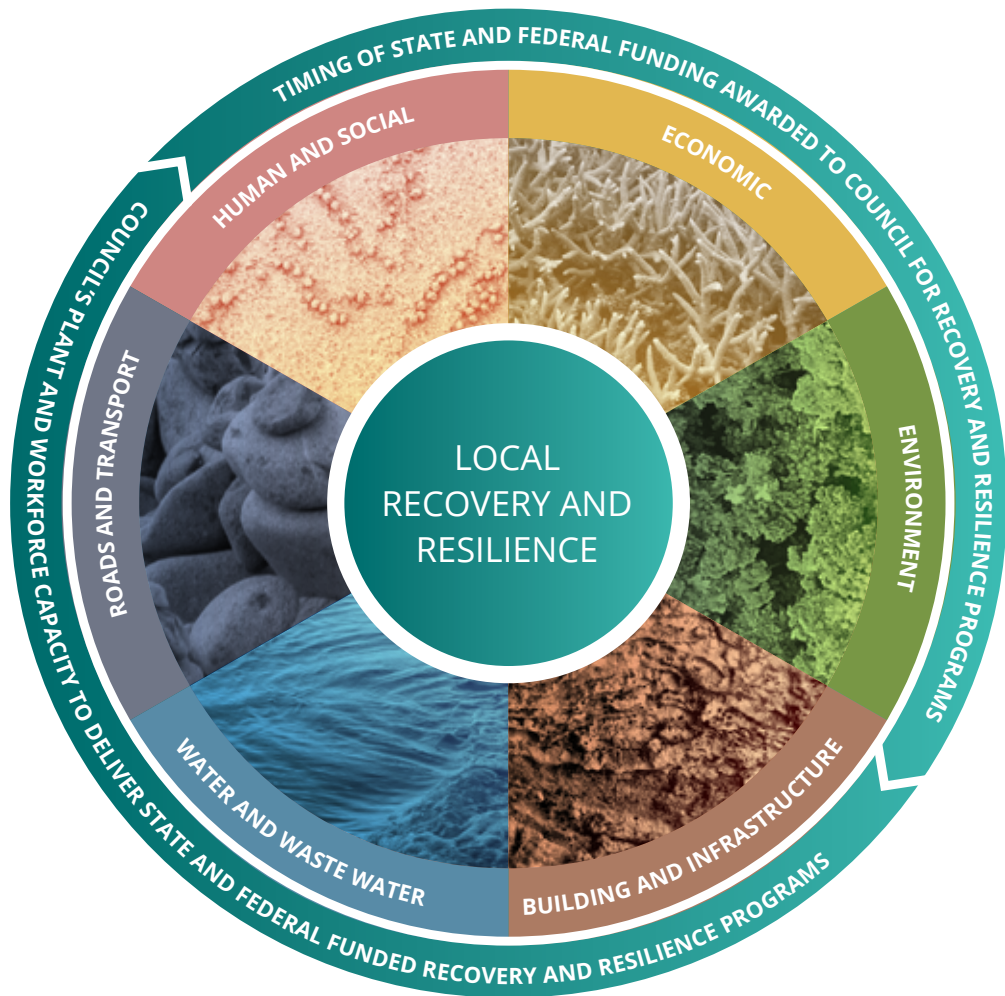
Human and Social

Recovery Resilience Functional Group

1. Purpose

The Human and Social Recovery and Resilience Functional Group supports the Douglas Recovery Resilience Group (DRRG) in planning, coordinating and implementing human and social recovery and long-term resilience strategies for the Douglas Shire.

This includes ensuring that affected individuals, families, and communities have access to timely information, psychosocial support, basic needs, and the ability to reconnect and recover in a safe and inclusive way.



Human and Social

Responsible for ensuring that affected individuals, families, and communities have access to timely information, psychosocial support, basic needs, and the ability to reconnect and recover in a safe and inclusive way.

2. Functions

The Human and Social Recovery and Resilience Functional Group will:

- Support the development and maintenance of the Douglas Recovery Sub-Plan.
- Coordinate the delivery of community recovery services during and following disaster events.
- Monitor and address wellbeing and social cohesion issues arising from disasters.
- Promote a community-led recovery approach that prioritises vulnerable populations.
- Liaise with service providers, networks, and government to mobilise and coordinate support.
- Identify emerging issues and report progress and gaps to the DRRG.
- Facilitate access to emergency and temporary accommodation and psychosocial support.
- Leverage recovery funding and resources, including partnerships with GIVIT and local organisations.
- Support integration of human and social initiatives within broader recovery functions (e.g. infrastructure, environment, economic).

3. Membership

Membership includes representatives from:

- Douglas Shire Council (Community Services)
- Queensland Health and Mental Health Services
- Non-government organisations
- Community leaders and First Nations representatives and organisations.
- Other organisations and specialists may be invited by the Chair as needed.

4. Governance and Reporting

The Human and Social Recovery and Resilience Functional Group is a functional subgroup of the DRRG. It is chaired by the Team Leader, Community and Economic Development (or delegate), and reports directly to the DRRG Chair.

The Chair may nominate a deputy or acting chair as required.

All correspondence should be directed through:

humanandsocial.recovery@douglas.qld.gov.au

5. Meetings

- Minimum of two meetings annually (e.g. before and after disaster season)
- Additional meetings convened during recovery operations
- Minutes and action items maintained by a nominated Secretariat and circulated within 7 days
- The group will seek to make decisions by consensus of members present. Where consensus cannot be reached, the chair will determine the most appropriate course of action.
- Unresolved issues escalated to the DRRG Chair

6. Principles

The Human and Social Recovery and Resilience Functional Group operates in accordance with the **National Principles for Disaster Recovery**:

- Understand the Context
- Recognise Complexity
- Use Community-led Approaches
- Coordinate all Activities
- Communicate Effectively
- Recognise and Build Capacity