

Infrastructure

Recovery Resilience Functional Group

Incorporates

Buildings and Infrastructure

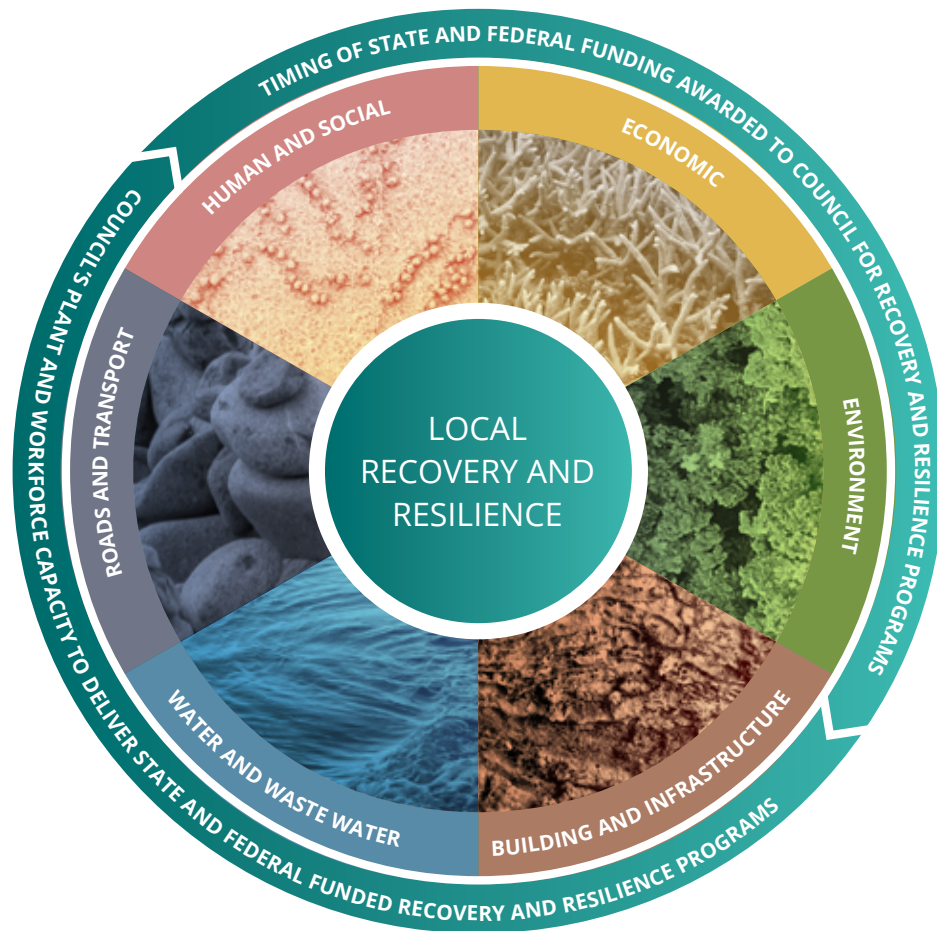
Roads and Transport

Water and Wastewater

1. Purpose

The Infrastructure Recovery and Resilience Functional Groups support the Douglas Recovery Resilience Group (DRRG) by planning, coordinating, and monitoring the recovery and long-term resilience of the built environment, roads and transport systems, water and wastewater following disaster events.

The group ensures that infrastructure recovery is efficient, sustainable, and aligned with community needs and includes future-proofing objectives.



Building and Infrastructure

Responsible for reinstating damaged and disrupted built assets that influence essential services and facilities

Water and Wastewater

Responsible for identifying and addressing all water-related impacts to water quality and supply.

Roads and Transport (provisional)

Responsible for the restoration of transport networks including road, rail, aviation and maritime which hinder or halt community movements and critical supply chain.

2. Functions

The Infrastructure Recovery and Resilience Functional Groups will:

- Support the development and maintenance of the Douglas Recovery Sub-Plan.
- Coordinate post-disaster assessments, repairs, and reconstruction of council and public assets.
- Monitor and report damage and disruption across buildings, transport networks, and utility systems.
- Facilitate restoration of services such as water supply, wastewater, council buildings and access routes.
- Engage with infrastructure stakeholders (e.g. QRA, TMR, Ergon, Telstra and regulatory bodies).
- Provide technical and regulatory advice to the DRRG and impacted community members.
- Liaise with insurance providers and regulators (e.g. QBCC, ICA) to accelerate rebuilding.
- Promote betterment and resilient design in reconstruction efforts.
- Integrate infrastructure recovery into broader recovery functions (e.g. economic, environmental, human and social).

3. Membership

Core membership may include:

- Douglas Shire Council (Infrastructure, Water and Wastewater, Roads and Transport Teams)
- Queensland Reconstruction Authority (QRA)
- Relevant government agencies and governing bodies
- Utility providers
- Supporting members may be invited by the Chair based on the nature and impact of specific events.

4. Governance and Reporting

The Infrastructure Recovery and Resilience Functional Groups are functional subgroups of the DRRG. Focus area specific groups are chaired by the Manager Maintenance and Operations, Manager Construction and Commercial or Manager Water and Wastewater (as appropriate) and reports to the DRRG Chair.

The Chair may nominate a deputy or acting chair as required.

All correspondence should be directed through:
infrastructure.recovery@douglas.qld.gov.au

5. Meetings

- Minimum of two meetings annually (e.g. before and after disaster season)
- Additional meetings convened during recovery operations
- Minutes and action items maintained by a nominated Secretariat and circulated within 7 days
- The group will seek to make decisions by consensus of members present. Where consensus cannot be reached, the chair will determine the most appropriate course of action.
- Unresolved issues escalated to the DRRG Chair

6. Principles

The Infrastructure Recovery and Resilience Functional Groups will operate in accordance with the **National Principles for Disaster Recovery:**

- Understand the Context
- Recognise Complexity
- Use Community-led Approaches
- Coordinate all Activities
- Communicate Effectively
- Recognise and Build Capacity