

# Community Resilience Scorecard

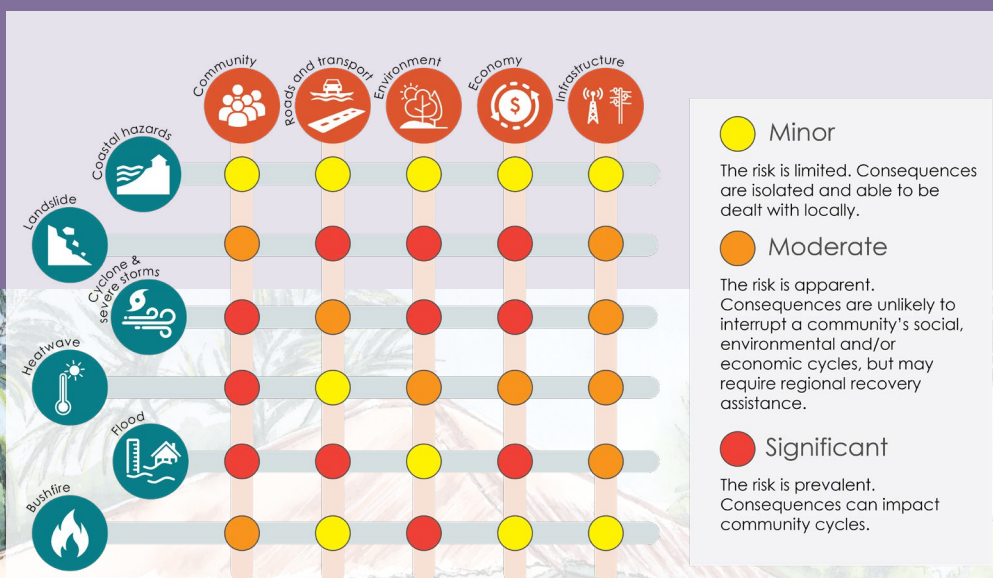
## Daintree Village (Julaymba) and surrounding valleys



**LOCAL DISASTER  
MANAGEMENT GROUP**

*Disaster Management is everybody's business*

We are a community with strong connections socially, to history and to place. We band together when our community is in need. We understand our risks, and know our most vulnerable residents. We live here because of our connection to the region through farming and tourism and accept the risks that this can present.



### RISK STATEMENT

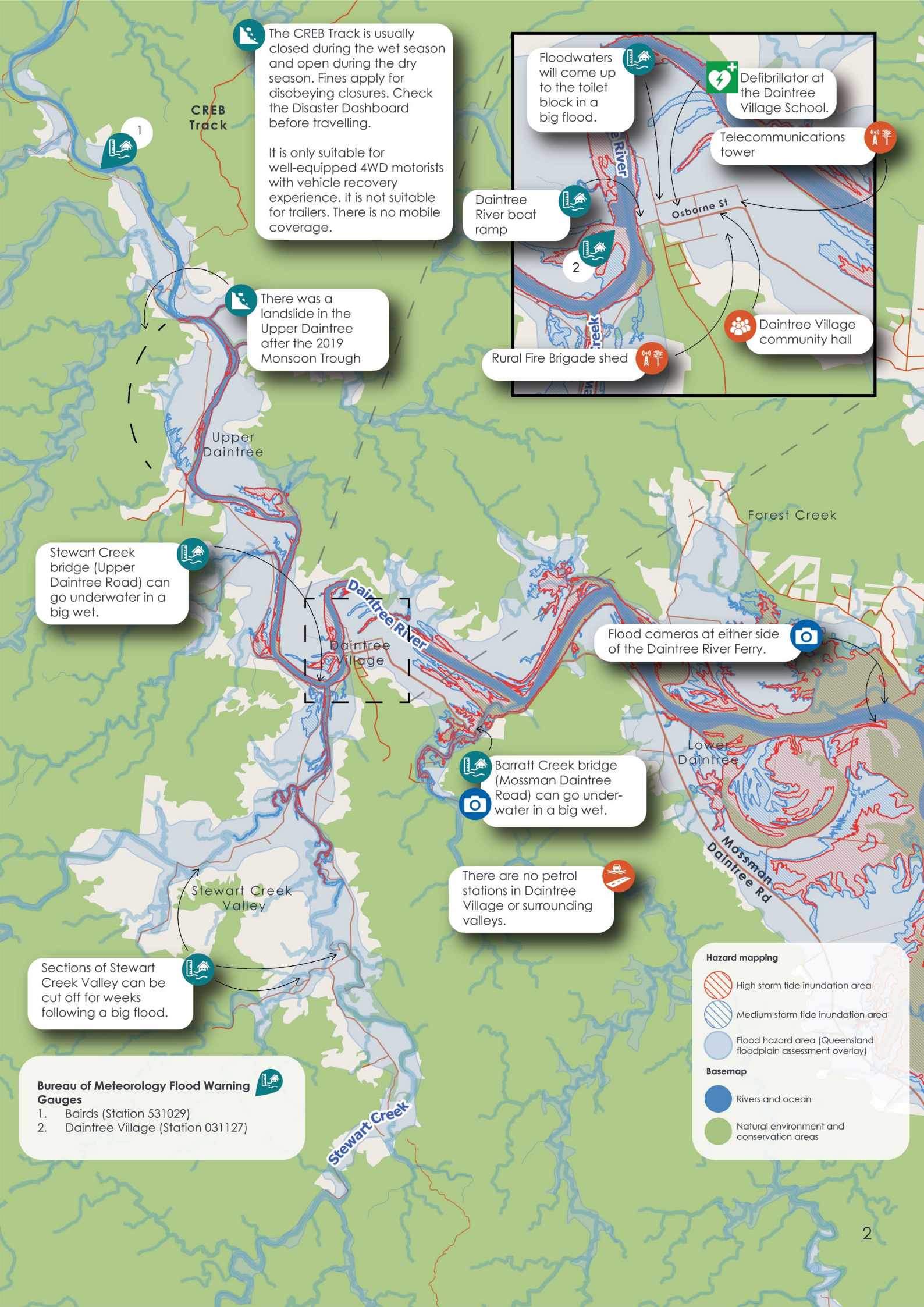
Located in the Daintree River valley, this community shares the significant risk of cyclone, flood and landslide with the balance of the Shire. The Daintree River hugs one of the older settlements of the region with steep inclines, creeks, hidden valleys and low-lying floodplain.

There are houses and places that flood regularly and these locations are known by the community. Older buildings and older residents increases vulnerability in time of isolation, debris and storm damage and heatwaves. Landslides are a risk for our connection to Mossman in seasons with lots of rain.

Physical isolation makes things harder, especially if flood water or landslide events cause further and prolonged isolation and interruption to supply chains for produce or access to work.

Cyclones, storms, heatwaves and floods pose risks to agriculture, livestock wellbeing, crops, fencing and access to markets. Despite the steep slopes and dense forest, the risk of bushfire is not concerning.







The community is strong with foundations for acting together in place

The community is acting together for risk reduction, supported by others

The community has a formal response and recovery plan and resources in place

## What makes us

### STRONG?

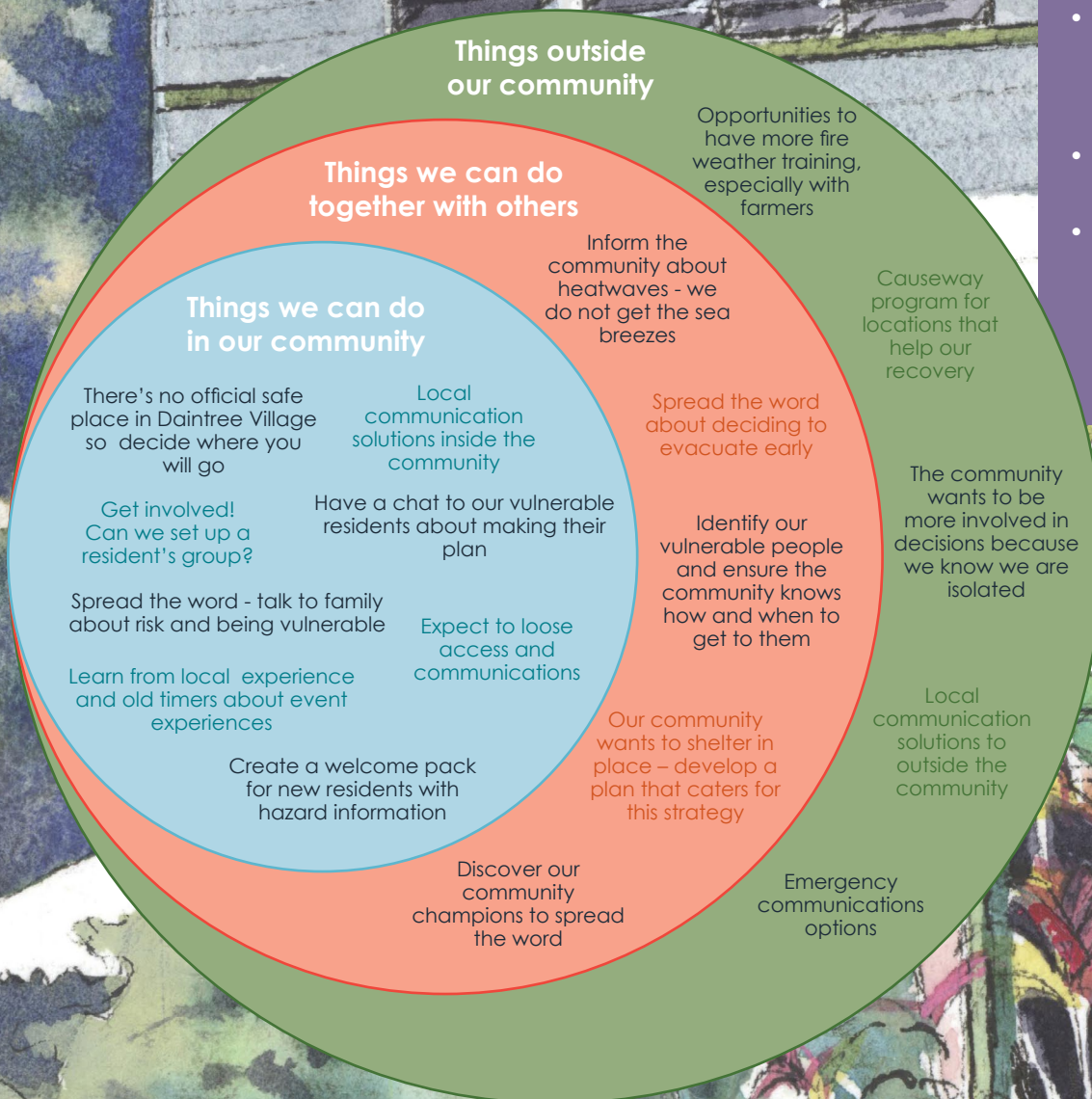
- We care for each other and know who needs help, it brings us together
- We understand that severe weather will come again
- We have lived here a long time and lived through many events
- We will look out for each other as before

## What makes us

### VULNERABLE?

- Our elderly and isolated community members who are exposed to risk, especially floods, and some won't leave
- Our agriculture that relies on the flood plain
- Our community is isolated by roads closing and by loss of communications and sometimes landslides
- Our communities do not get clear messages sometimes
- There is no airconditioned public space in the village

## TAKING ACTION





*“Community is about connectedness, knowing your neighbours, checking in on family and friends and helping out those who cannot help themselves.”*

Kay Langtree



*“My local community is very community minded - its a stand-out and it makes me proud to be a part of it, but it is also a huge advantage to feeling more secure and knowing you can rely on and also yourself provide safety and support to other community members.”*

Engagement, 2023



## *Heat affects us all!*

- Ensure you have cool water available
- Have a cool face cloth handy - put them in the freezer for a bit
- Create cool places at your home with plants, shade and breezeways
- Cool fruit is really refreshing and a great way to consume fluids, especially watermelon
- Check on the young, elderly and those with health conditions
- If you have air conditioning, open your house to neighbours in need
- Arrange to be outside early or later in the day and rest indoors at the peak

**For emergency assistance during an event:**  
contact the SES on 132 500.

For life threatening emergencies, call Triple Zero (000) immediately.

For regional and state resources try:

Wet Tropics Regional Resilience Strategy

Floodcheck Queensland

Get Ready Queensland

Resilient Homes Guidelines

The Future Climate Dashboard



Click on the titles to access website information

For all your local information head to:

**Douglas Disaster Dashboard**  
(snap the QR code)



**Download the App**  
Search 'Douglas Shire Council' in your app store

You can register to receive alerts and warnings for road closures and emergencies on the [Disaster Dashboard](#).

**Douglas Shire Disaster and Emergency Information**

Get in touch with the **Disaster Management team** at [disaster@douglas.qld.gov.au](mailto:disaster@douglas.qld.gov.au)

**For maps of your hazards go to the Douglas Shire Planning Scheme mapping**

**Douglas Resilient Coast Strategy**

**Community Resilience Scorecard**

Daintree Village (Julaymba) and surrounding valleys