

Community Resilience Scorecard

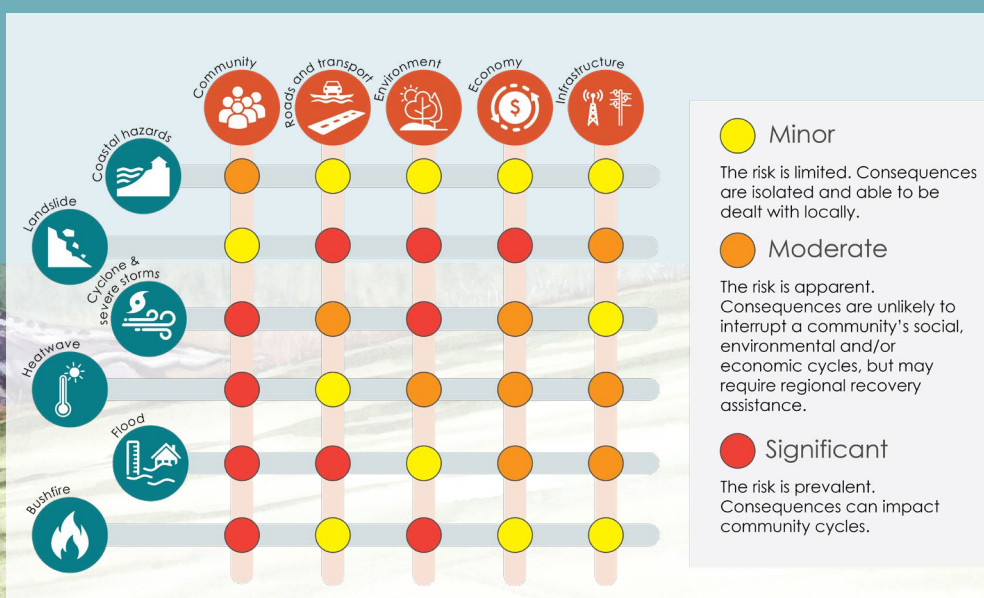
Degarra, Bloomfield and China Camp (Buru)



**LOCAL DISASTER
MANAGEMENT GROUP**

Disaster Management is everybody's business

We are a community with strong connection that draws us together and fosters a sense of independence. We understand our risks, our people and our Country. We live here because of our connection to the landscape and accept the risks that this can present.



RISK STATEMENT

Flood risk dominates due to our proximity to the Bloomfield and Woobadda Rivers and their tributaries. Because we are isolated and our small communities dispersed in the landscape, communication and sticking together is most important. Our coastal areas are exposed to hazards too, and these natural hazards impact our community most severely.

Heatwaves are concerning due to high numbers of vulnerable people, our Elders and children. Our vulnerability to heat is increased due to limited access to health or emergency services or mechanised cooling.

The heat brings fire danger too. Our community understands fire weather and can see the changes in flora and fauna behaviours over the years.

Physical isolation from road closures makes things harder, and isolation worsens if there is damage to communications. This is often the case in floods and cyclones. Access around our community is vulnerable to landslides and fallen trees. Landslide can occur because of intense rainfall and steep slopes.

This is why we need to be strong together and prepared.

Telecommunications (internet and mobile) can be poor quality in this part of Douglas Shire.



Living here requires a high level of self-sufficiency. Residents are living 'off-grid' and can be isolated or cut-off from Mossman and Cooktown for weeks at a time during the wet season.



Properties located in Degarra near the Bloomfield River are exposed to flood and storm surge risks.



There are one to two families living at Kangkiji Beach. This location is very isolated.

The heat can make our older people feel sick. We need to make sure they keep cool.



Flood camera at the Bloomfield River bridge.



Cook Shire Council

Ayton

Degarra

Wujal Wujal ASC

Wujal Wujal



Locals know where it is safe to swim when it gets very hot.

China Camp (Station 531071) Flood Warning Infrastructure



Landslides and erosion upstream in the Bloomfield River cause sedimentation downstream.

There are big hills along Cape Tribulation-Bloomfield Road. These are prone to landslides after heavy rain.



Cape Tribulation - Bloomfield Road

Cowie Beach

Upper Daintree Road

China Camp

Our people like to get out on Country to reconnect with the landscape.



Our steepest roads are being improved with concrete. But travellers should not be on these roads if they are towing anything or do not have high clearance, in case of washouts and debris.



Traditional owners and rangers look after the health of this Country by doing 'cool burns' to reduce fuel loads. However, the periods in which they can be done safely are getting shorter due to our changing climate.



The CREB Track is usually closed during the wet season and open during the dry season. Fines apply for disobeying closures. Check the Disaster Dashboard before travelling.

It is only suitable for well-equipped 4WD motorists with vehicle recovery experience. It is not suitable for trailers. There is no mobile coverage.

CREB track

Hazard mapping

- High storm tide inundation area
- Medium storm tide inundation area
- Flood hazard area (Queensland floodplain assessment overlay)

Basemap

- Rivers and ocean
- Natural environment and conservation areas

The community is strong with foundations for acting together in place



The community is acting together for risk reduction, supported by others



The community has a formal response and recovery plan and resources in place



What makes us

STRONG?

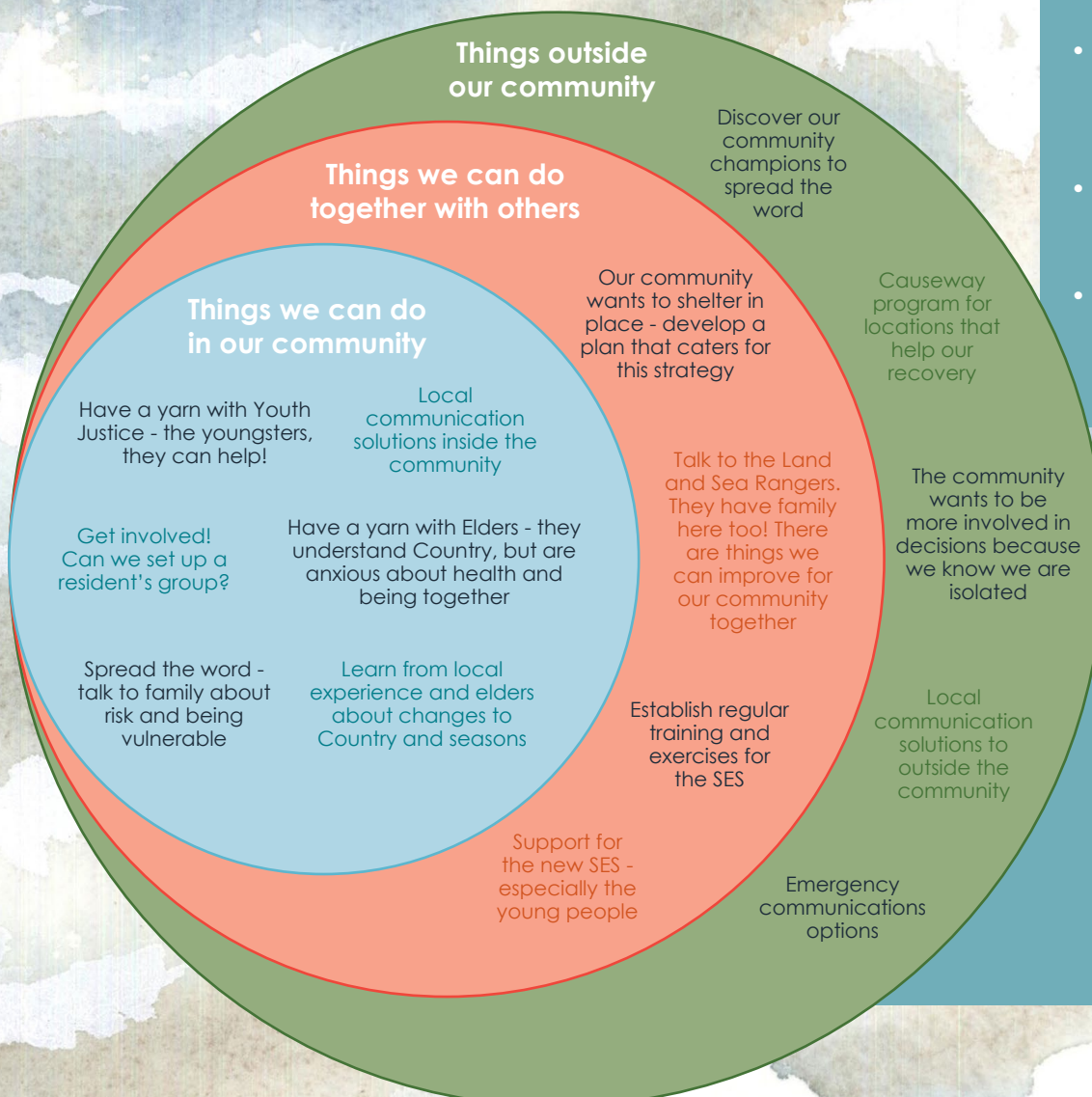
- We care for each other
- We understand that severe weather will come again
- We love where we live, and we belong here
- We will look out for each other as we shelter in place
- We have common values and connections to Country and family

What makes us

VULNERABLE?

- Our elderly community members who get worried in the storm season
- Our community members who have disabilities, mobility or health issues like asthma, or need regular care
- Our community is isolated by roads closing frequently and by loss of communications
- Our need to look after each other sometimes puts us in danger
- Our communities do not have lots of resources, including food

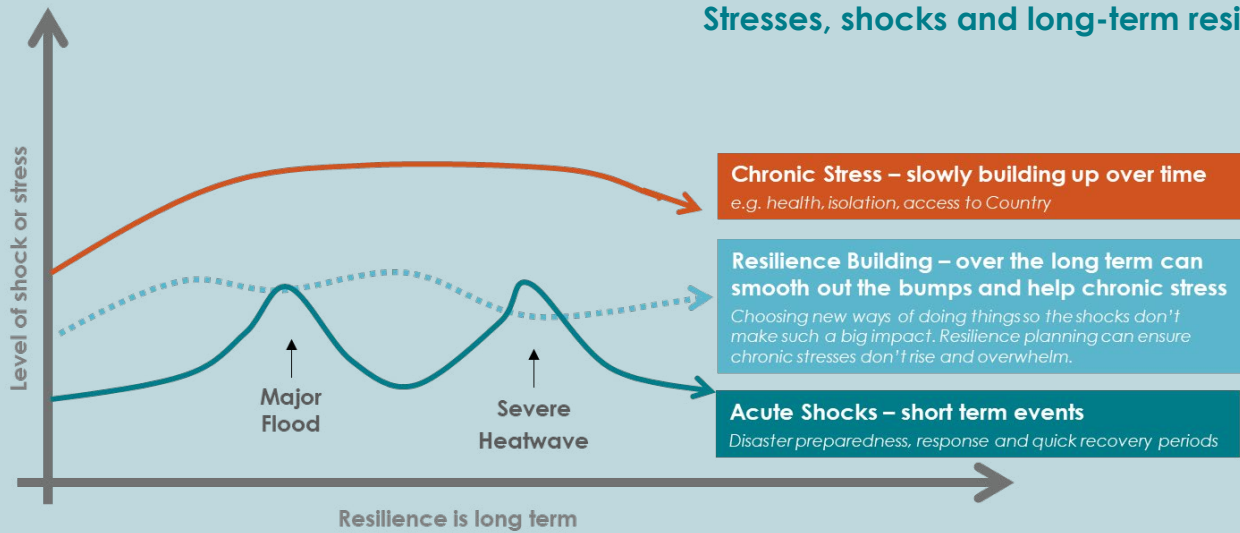
TAKING ACTION



“You have got to respect the environment or be a victim”

Engagement, 2023

Stresses, shocks and long-term resilience



Over time, extreme weather events are likely to become more frequent collectively: more heatwaves, potential for bushfires, perhaps fewer cyclones, but when they come, they may be more powerful, and we may see the seasons change with fires coming earlier and rains coming later.

Unfortunately, this may mean that we are not fully recovered from one event before another comes our way. These shocks can build up on top of other concerns like access to Country, the health of our Elders, isolation, connection to and return of our young people, to be chronic stressors which impact our quality of life.

Did you know?

- Queensland has a continued program of updating and increasing the Flood Warning Infrastructure Network.
- 45 installations occurred in the far north in 2021-22 including four new rain gauges and one new river gauge for Douglas Shire.
- Flood warnings are provided through different types of infrastructure such as cameras, rain gauges or water level measurements.
- Douglas has 19 cameras, including one on the Bloomfield River bridge which operate 24/7 and are available to see on the Disaster Dashboard or the App.

For emergency assistance during an event:
contact the SES on 132 500.

For life threatening emergencies, call Triple Zero (000) immediately.

For regional and state resources try:

Wet Tropics Regional Resilience Strategy
Floodcheck Queensland
Get Ready Queensland
Resilient Homes Guidelines
The Future Climate Dashboard



Click on the titles to access website information

For all your local information head to:

Douglas Disaster Dashboard
(snap the QR code)



Download the App
Search 'Douglas Shire Council' in your app store

You can register to receive alerts and warnings for road closures and emergencies on the [Disaster Dashboard](#).

Douglas Shire Disaster and Emergency Information

Get in touch with the **Disaster Management team** at disaster@douglas.qld.gov.au

For maps of your hazards go to the Douglas Shire Planning Scheme mapping

Douglas Resilient Coast Strategy