

Community Resilience Scorecard

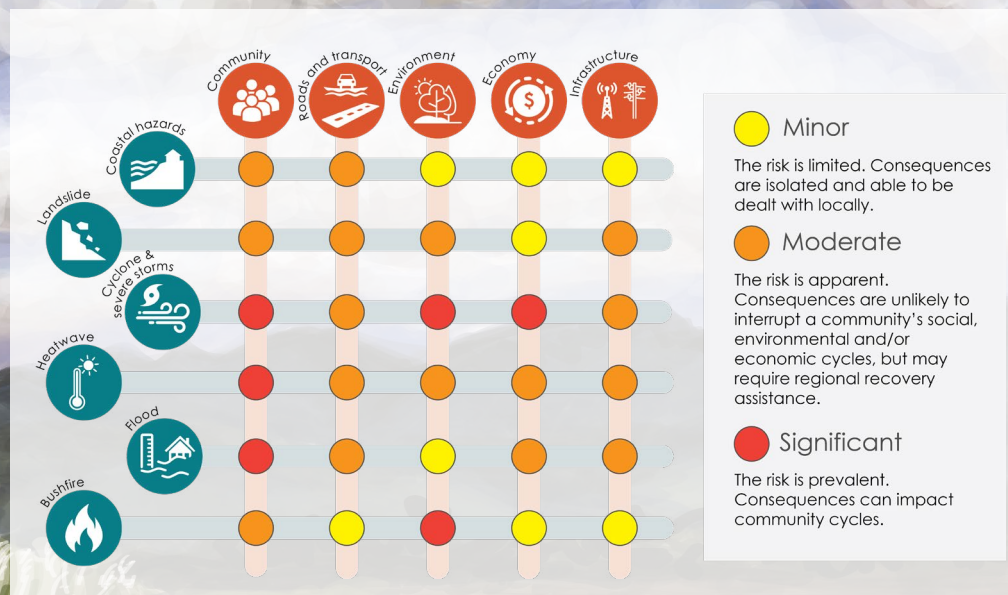
Mossman and Cooya Beach (Kuyu Kuyu)



**LOCAL DISASTER
MANAGEMENT GROUP**

Disaster Management is everybody's business

Mossman is the heart of the region but the landscape that we love separates us during natural hazard events from our chain of unique communities including the closest at Cooya Beach. Our heritage stems from the fertile flood plains in sugar production. We understand the risks of living here as part of our lifestyle.



RISK STATEMENT

Mossman and Cooya Beach face significant risk of cyclone and flood. Cooya Beach is exposed to coastal hazards, especially storm tide and permanent inundation of low areas. Debris and water can close access roads in all directions.

The Mossman and South Mossman rivers are a prominent landscape feature and are the source of flood risk which can cut access to Cooya Beach and areas around Mossman. Older buildings in Mossman are vulnerable to storms, whereas Cooya Beach has many newer homes.

Heatwave is riskier in urban areas and can stop people from moving about. Older people are especially vulnerable to heatwaves.

Landslide and bushfire risk is limited in these communities however west of Mossman to the Gorge and beyond increases risk on the steeper and vegetated slopes.



Low lying areas of Cooya Beach are exposed to flood and coastal hazards.

Mossman River Boat Ramp

The Foxton Bridge over the Mossman River can be inundated during flooding. It is the only crossing over the Mossman River.

Flood camera at Anich's Bridge.

Flood camera at Foxton Bridge.

Mossman has some of the oldest building stock in the region, making it vulnerable to cyclone damage.

Bonnie Doon Road trouble spot, prone to inundation.

Mossman Fire Station

Erosion is occurring in sections of the Mossman River.

Council Chambers and Mossman SES are co-located on Front St. Chambers operates as the Local Disaster Coordination Centre during a disaster. Sandbags are available from the SES Depot.

Mossman Multi-purpose Health Service

During the wet season, swimming in Mossman Gorge can be dangerous. People have lost their lives in dangerous conditions.

Shannonvale Road trouble spot, near the causeway.

Risks of landslide and bushfire atop the Cassowary Range.

Hazard mapping

- High storm tide inundation area
- Medium storm tide inundation area
- Flood hazard area (Queensland floodplain assessment overlay)

Basemap

- Rivers and ocean
- Natural environment and conservation areas

- Bureau of Meteorology Flood Warning Gauges**
- O'Donoghue Rd (Station 531068)
 - Mossman Tide (Station 531014)
 - Mossman (Station 531063)



What makes us STRONG?

- We understand that severe weather will come again
- We have good connections within the community, and we know our neighbours
- We will look out for each other as before
- Most of us have a plan and look after our properties

What makes us VULNERABLE?

- Our communities are exposed to both fresh water and saltwater inundation
- The community is getting older
- Need more people involved
- Lots of people have pets and also need medication
- We don't have a postal service.
- We aren't far away but the road is often cut, and there are no services at Cooya Beach

TAKING ACTION

Resilience is a long-game. We act early before warnings are issued. This makes us better prepared for when a disaster does occur.



Effort and opportunity decrease as time passes



Resilience BASELINE

- Talk to neighbours, friends, family and community groups about challenges
- Understand the hazards and know if you are at risk, check the maps
- Understand how your property, business and family is exposed
- Check your insurance
- How strong is your home? Does it need any modifications? Insulation?
- Check the latest resilient homes guides
- Keep your yard tidy
- Volunteer
- Keep your access track clear
- Talk to your doctor and know how you may be affected by heat, smoke or stress

Resilience PREPARATION

- Talk to neighbours, family, friends and your doctor – create a buddy system
- Have a place to go, a time to evacuate and someone to help.
- Know your evacuation route and monitor conditions
- Make a plan for your pet
- Have a kit ready
- Sign up for alerts
- Know the best sources of information
- Attend Get Ready week and volunteer events
- If you chose to stay - be ready to be independent for all events - sometimes it's too late to leave

Resilience PRE-SEASON/EVENT

- Stock up: medications, pet food, dry foods, batteries, fuel, candles etc
- Talk to neighbours family and friends (again)
- Check the Disaster Dashboard and weather forecasts
- Secure your property, clean up

“Chance favours a prepared mind”

David Burfield



Did you know?

Flood water can contain:

- Black water (contaminated with sewage)
- Power lines or other infrastructure access points
- Crocodiles
- Sharp debris
- Snakes
- Mosquitos
- Washouts, broken roads, paths and gutters

The Mossman Fire Service is entirely made up of **volunteer fire fighters**



For emergency assistance during an event:
contact the SES on 132 500.

For life threatening emergencies, call
Triple Zero (000) immediately.



Mossman River

For regional and state resources try:

Wet Tropics Regional Resilience Strategy

Floodcheck Queensland

Get Ready Queensland

Resilient Homes Guidelines

The Future Climate Dashboard



Click on the titles
to access website
information

For all your local information head to:

Douglas Disaster Dashboard
(snap the QR code)

Download the App
Search 'Douglas Shire Council'
in your app store



You can register to receive alerts and warnings for road closures and emergencies at the [Disaster Dashboard](#).

Douglas Shire Disaster and Emergency Information

Get in touch with the **Disaster Management team**
at disaster@douglas.qld.gov.au

For maps of your hazards go to the Douglas Shire Planning Scheme mapping

Douglas Resilient Coast Strategy