



# Report Card

Natural Assets & Animal Management

# DOUGLAS

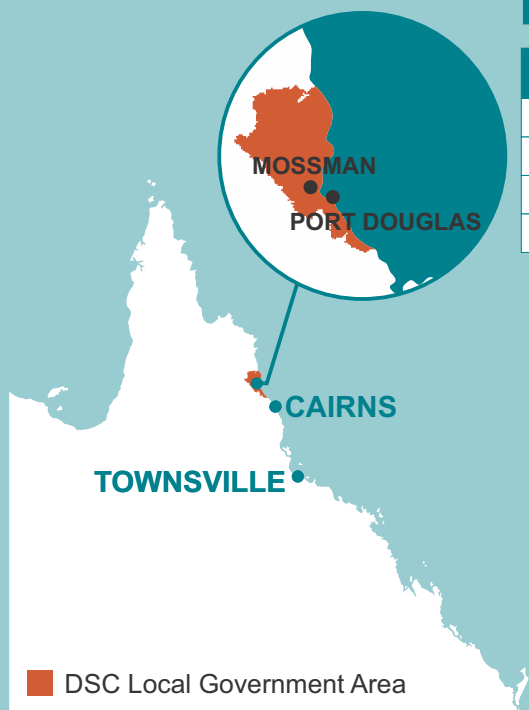
SHIRE COUNCIL

2019 - 2020

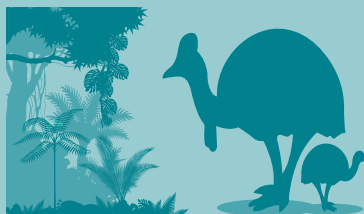
## Did you know?

### Douglas Shire Council Geographical Information

Total Area & Coastline	111 Km of coastline	244,500 Hectares
Wet Tropics World Heritage Area	194,623 Hectares	80% of LGA
Protected Area	151,673 Hectares	62% of LGA
Nature Refuges	258 Hectares	11 refuges in total



### Significant/essential habitat



#### Core Cassowary Habitat

150,494 Ha  
62% of LGA

#### Broadleaf Teatree Woodland

246 Ha

#### Littoral Rainforest

342 Ha

#### Einasleigh Uplands

606 Ha

#### Wet Tropics

244,144 Ha

### Bioregion Summary

NATURAL ASSETS

### Revegetation



20,598

Number of trees produced.



130 Volunteer Days  
(nursery & biosecurity)

3,007 plants  
given to the  
community

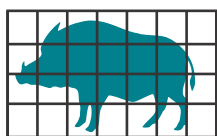
8,158 plants  
used for  
re-vegetation

3,023 plants  
used in  
Council Projects

### Pest Animal Management

8 Feral pig traps  
available for loan

Number of  
active traps 56



368  
Feral pigs  
controlled

Coordinated  
feral pig control  
events

2

### Natural Assets Visitor Infrastructure

2

Kilometres of walking tracks  
owned by Council

6

Number of boat ramps  
maintained by Council

### Weed Control



5,030

Staff hours spent on  
weed management

Number of staff hours  
spent on priority aquatic  
weed control

93



Weed spray  
units available  
to loan landowners

2

### Fire Management



0

Kilometres of  
fire breaks  
maintained  
or constructed

### Miconia Eradication

DSC has worked in partnership with QPWS, Biosecurity Queensland and traditional owners targeting Miconia in the Whyanbeel Valley as part of the Four Tropical Weeds Program. DSC commitment: 320Hrs

### Hiptage Vine Eradication

Douglas Shire Council successfully gained funding of \$80,000 to implement the continued treatment of Hiptage throughout the main core infestation located on Tara Hills, (Butchers Hill) near Mossman. The Hiptage eradication project is funded by the Queensland Government's Natural Resources Investment Program through Terrain NRM.

Grant money of \$180,000 was awarded to Douglas Shire Council for a four-year period through Terrain's 'Native Vegetation – Many Hands Make Light Work' project. The total project area treated: 11.7 Hectares

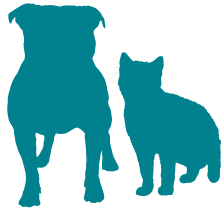
### Patrols

142

Wandering dogs intercepted

67

Wandering cats intercepted



### Registrations



Total number of new dog registrations



2,145

Total number of dog registrations in LGA

eight

Off-leash recreation areas



### Incidents



33

The number of dog attacks that DSC responded to

13 REGULATED DOGS

### Stock Management



Seventeen

Customer Requests were received for wandering stock

### Impoundments & welfare

108



Dogs and cats reunited with their owners



82 Dogs & cats rehomed



514

Animal Management Enquiry Responses

### Mandatory De-sexing of Cats and Dogs

Douglas Shire Council adopted new local laws in February 2020, which included provisions for the mandatory de-sexing of cats and dogs. It is hoped that this initiative will, in the long term, reduce the numbers of unwanted animals in the community.

### Mossman Pound Upgrade

The Mossman Pound received an upgrade, including the addition of a large, grassed exercise area and custom-built cat enclosures. This will improve the welfare of the animals in our care and increased our capacity to impound cats.