

Mossman Community Hall



Location: Mill Street, Mossman

General Info: The Mossman Shire Community Hall is a heritage listed building built in 1936. The hall features a stage and wooden floor. It has been a popular venue for many wedding receptions, concerts, dance classes and other private and public functions.

The **Main Hall** has the capacity to hold 350 theatre style or 250 dining style. It has specialised sound equipment, piano, ceiling and wall mounted fans, power points, a stage and costume change area.



Stored beneath the stage there are approximately 17 timber and 20 resin rectangular tables (1600 x 750) and about 300 chairs.

The **Annex** is air-conditioned and has a kitchen and separate bar area. The **Annex** area is suitable for small meetings and used during catered functions.



Enquiries: 07 – 4099 9444 or enquiries@douglas.qld.gov.au. On application to hire advice would need to be provided on more intricate details, eg set up, close times; as well the payment of a bond, and details of security provisions etc.

Booking Form: [Hire of Halls, Centres and Sugar Wharf Facilities](#)

Car Park: An uncovered accessible public car park bay is available at the rear of the hall. A level path way leads to either a front (Mill Street) or rear ramps into the hall.

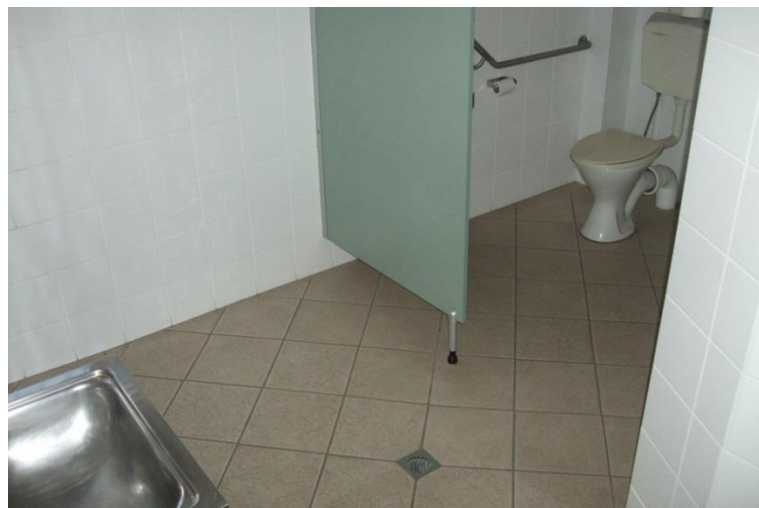


Hall Facilities: The hall is generally level and easily accessible for people with mobility issues through double doors located at the front and rear of the facility. Surface tactiling is installed for people who are blind or have vision impairment.

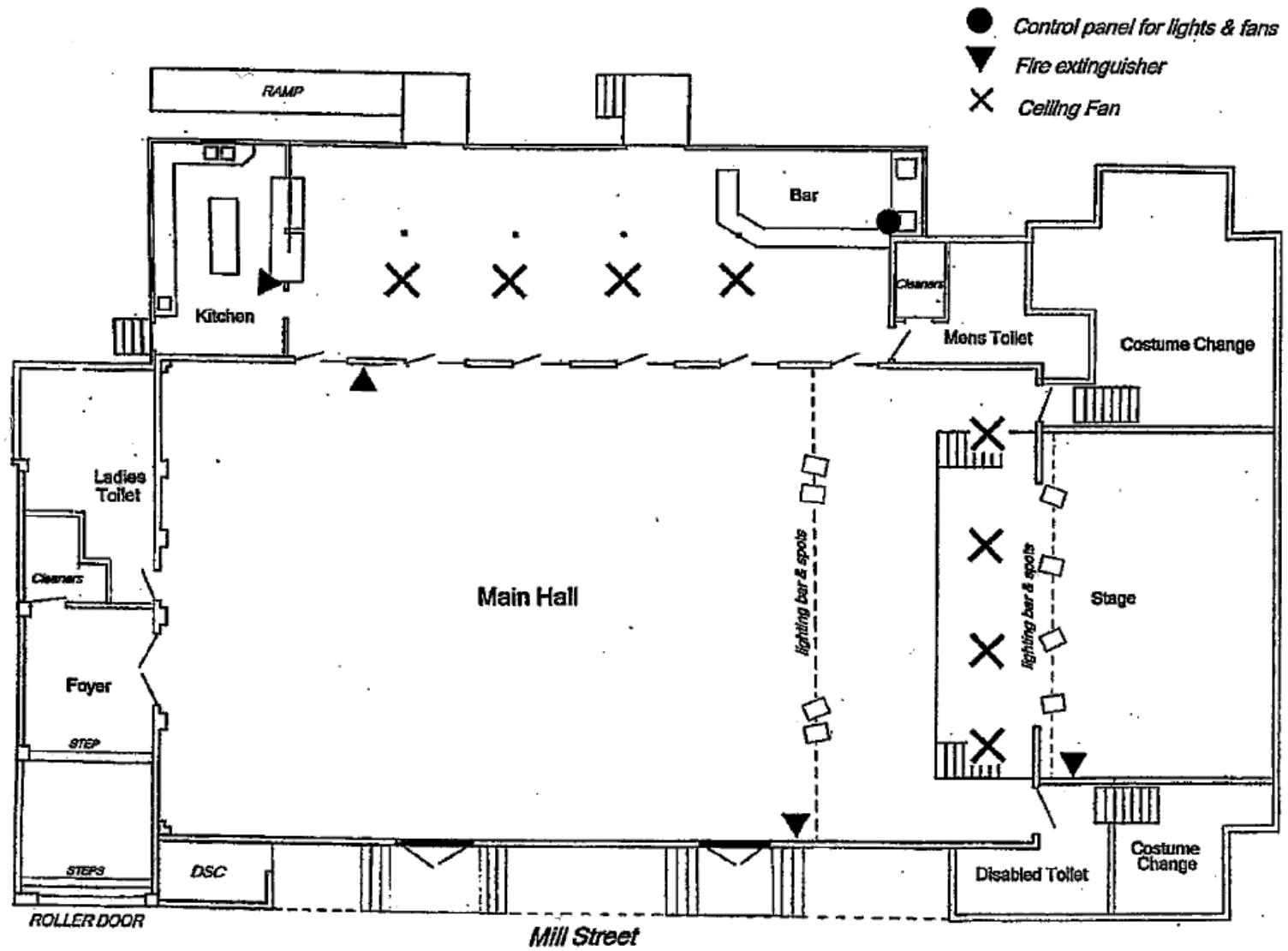
Kitchen/Bar: The kitchen has a wall mounted zip-boil urn and large urn , oven and cooktop, double glass door fridge, small bar fridge, stainless steel benches and servery. The bar has a timber servery, double glass door fridge and two sinks.



Sanitary Facilities: An accessible toilet is available with hand rails.



Floor Plan



- Control panel for lights & fans
- ▼ Fire extinguisher
- × Ceiling Fan

