

LEGEND

PUBLIC PARKS AND LAND FOR COMMUNITY FACILITIES

- Local Recreation Park
- District Recreation Park
- District Sports Park
- Local Govt Wide Recreation Park
- Local Govt Wide Sports Park
- Community Facilities
- Other Open Space
- Land for Drainage Purposes
- Conservation

STATUS OF INFRASTRUCTURE

- Future Park
- Park Upgrade

GENERAL

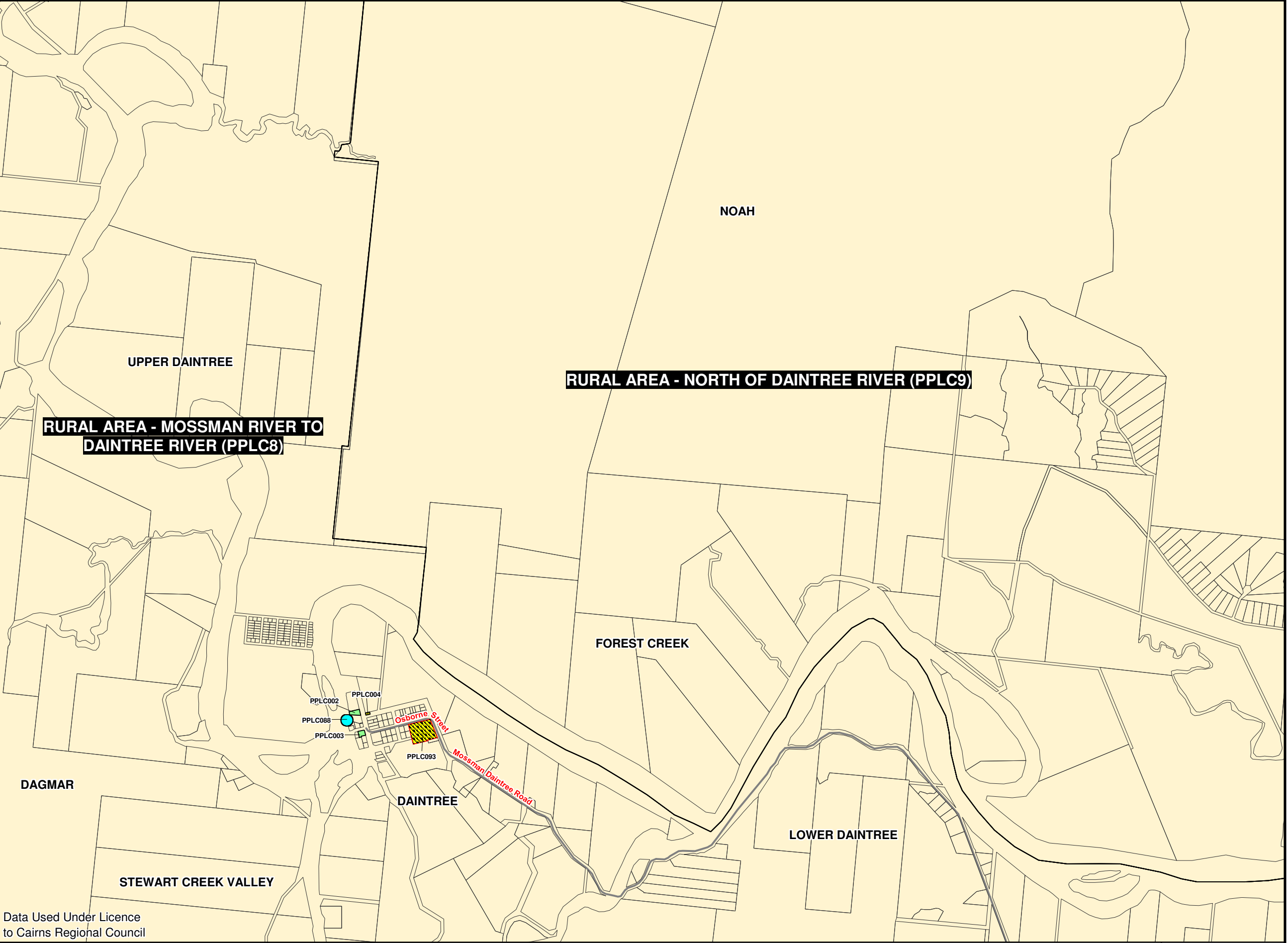
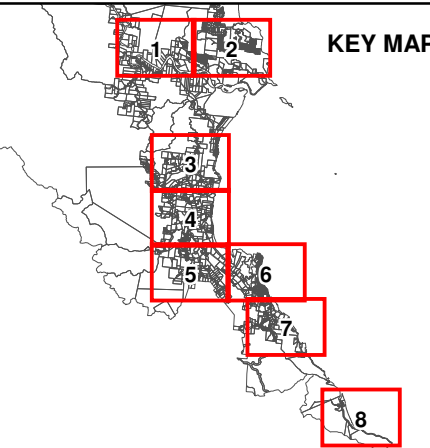
- Property Boundary
- Public Parks and Land for Community Facilities Charges Catchment
- Arterial Road (Guide Only)

© The State of Queensland (Natural Resources and Water) [2007].
Based on Cadastral Data provided with the permission of the Department of Natural Resources and Water (Current as at September 2008). While every care is taken to ensure the accuracy of this data, the Department of Natural Resources and Water makes no representations or warranties about its accuracy, reliability, completeness or suitability for any particular purpose and disclaims all responsibility and all liability (including without limitation, liability in negligence) for all expenses, losses, damages (including indirect or consequential damage) and costs which you might incur as a result of the data being inaccurate or incomplete in any way and for any reason.



0 500 1,000
metres

Scale 1:30 000 @ A3



Data Used Under Licence
to Cairns Regional Council

Drawn: SB

Checked: DS

Approved: NC

Date: 18/05/2010

Rev: 1.2

DOUGLAS
SHIRE COUNCIL

DOUGLAS SHIRE COUNCIL

ADOPTED INFRASTRUCTURE CHARGES 2015

PUBLIC PARKS AND LAND FOR COMMUNITY FACILITIES TRUNK INFRASTRUCTURE

PROJECT NUMBER:
0706-1

GRID:

1

DRAWING:

DSC_PIP_PPLC_001.WOR

LEGEND

PUBLIC PARKS AND LAND FOR COMMUNITY FACILITIES

- Local Recreation Park
- District Recreation Park
- District Sports Park
- Local Govt Wide Recreation Park
- Local Govt Wide Sports Park
- Community Facilities
- Other Open Space
- Land for Drainage Purposes
- Conservation

STATUS OF INFRASTRUCTURE

- Future Park
- Park Upgrade

GENERAL

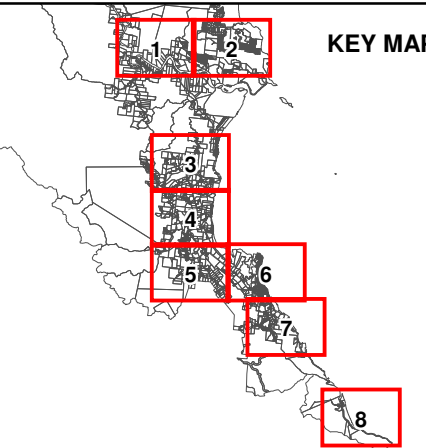
- Property Boundary
- Public Parks and Land for Community Facilities Charges Catchment
- Arterial Road (Guide Only)

© The State of Queensland (Natural Resources and Water) [2007].
Based on Cadastral Data provided with the permission of the Department of Natural Resources and Water (Current as at September 2008). While every care is taken to ensure the accuracy of this data, the Department of Natural Resources and Water makes no representations or warranties about its accuracy, reliability, completeness or suitability for any particular purpose and disclaims all responsibility and all liability (including without limitation, liability in negligence) for all expenses, losses, damages (including indirect or consequential damage) and costs which you might incur as a result of the data being inaccurate or incomplete in any way and for any reason.



0 500 1,000
metres

Scale 1:30 000 @ A3



Data Used Under Licence
to Cairns Regional Council

Drawn: SB

Checked: DS

Approved: NC

Date: 18/05/2010

Rev: 1.2

DOUGLAS
SHIRE COUNCIL

DOUGLAS SHIRE COUNCIL

ADOPTED INFRASTRUCTURE CHARGES 2015

PUBLIC PARKS AND LAND FOR COMMUNITY FACILITIES TRUNK INFRASTRUCTURE

PROJECT NUMBER:
0706-1

GRID:
2

DRAWING:
DSC_PIP_PPLC_002.WOR

LEGEND

PUBLIC PARKS AND LAND FOR COMMUNITY FACILITIES

- Local Recreation Park
- District Recreation Park
- District Sports Park
- Local Govt Wide Recreation Park
- Local Govt Wide Sports Park
- Community Facilities
- Other Open Space
- Land for Drainage Purposes
- Conservation

STATUS OF INFRASTRUCTURE

- Future Park
- Park Upgrade

GENERAL

- Property Boundary
- Public Parks and Land for Community Facilities Charges Catchment
- Arterial Road (Guide Only)

© The State of Queensland (Natural Resources and Water) [2007].
Based on Cadastral Data provided with the permission of the Department of Natural Resources and Water (Current as at September 2008). While every care is taken to ensure the accuracy of this data, the Department of Natural Resources and Water makes no representations or warranties about its accuracy, reliability, completeness or suitability for any particular purpose and disclaims all responsibility and all liability (including without limitation, liability in negligence) for all expenses, losses, damages (including indirect or consequential damage) and costs which you might incur as a result of the data being inaccurate or incomplete in any way and for any reason.

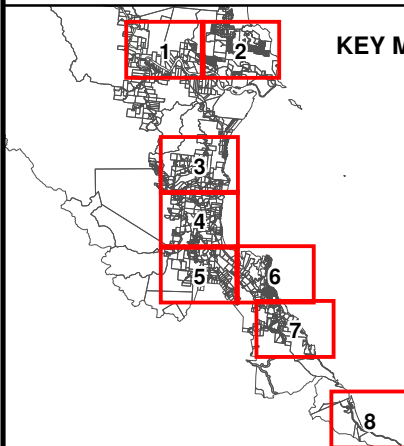


0 500 1,000
metres

Scale 1:30 000 @ A3



KEY MAP



Data Used Under Licence
to Cairns Regional Council

Drawn: SB

Checked: DS

Approved: NC

Date: 18/05/2010

Rev: 1.2

DOUGLAS
SHIRE COUNCIL

DOUGLAS SHIRE COUNCIL

ADOPTED INFRASTRUCTURE CHARGES 2015

PUBLIC PARKS AND LAND FOR COMMUNITY FACILITIES TRUNK INFRASTRUCTURE

PROJECT NUMBER:
0706-1

GRID:
3

DRAWING:
DSC_PIP_PPLC_003.WOR

LEGEND

PUBLIC PARKS AND LAND FOR COMMUNITY FACILITIES

- Local Recreation Park
- District Recreation Park
- District Sports Park
- Local Govt Wide Recreation Park
- Local Govt Wide Sports Park
- Community Facilities
- Other Open Space
- Land for Drainage Purposes
- Conservation

STATUS OF INFRASTRUCTURE

- Future Park
- Park Upgrade

GENERAL

- Property Boundary
- Public Parks and Land for Community Facilities Charges Catchment
- Arterial Road (Guide Only)

© The State of Queensland (Natural Resources and Water) [2007].
Based on Cadastral Data provided with the permission of the Department of Natural Resources and Water (Current as at September 2008). While every care is taken to ensure the accuracy of this data, the Department of Natural Resources and Water makes no representations or warranties about its accuracy, reliability, completeness or suitability for any particular purpose and disclaims all responsibility and all liability (including without limitation, liability in negligence) for all expenses, losses, damages (including indirect or consequential damage) and costs which you might incur as a result of the data being inaccurate or incomplete in any way and for any reason.

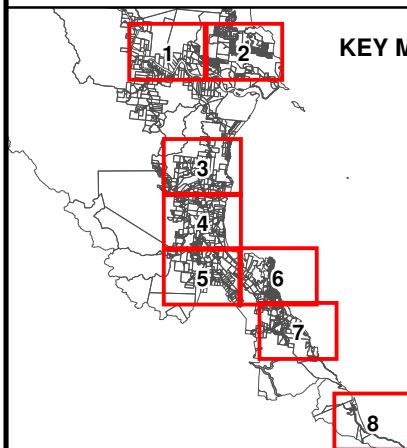


0 500 1,000
metres

Scale 1:30 000 @ A3



KEY MAP



Data Used Under Licence
to Cairns Regional Council

Drawn: SB

Checked: DS

Approved: NC

Date: 18/05/2010

Rev: 1.2

DOUGLAS
SHIRE COUNCIL

DOUGLAS SHIRE COUNCIL

ADOPTED INFRASTRUCTURE CHARGES 2015

PUBLIC PARKS AND LAND FOR COMMUNITY FACILITIES TRUNK INFRASTRUCTURE

PROJECT NUMBER:
0706-1

GRID:

4

DRAWING:

DSC_PIP_PPLC_004.WOR

LEGEND

PUBLIC PARKS AND LAND FOR COMMUNITY FACILITIES

- Local Recreation Park
- District Recreation Park
- District Sports Park
- Local Govt Wide Recreation Park
- Local Govt Wide Sports Park
- Community Facilities
- Other Open Space
- Land for Drainage Purposes
- Conservation

STATUS OF INFRASTRUCTURE

- Future Park
- Park Upgrade

GENERAL

- Property Boundary
- Public Parks and Land for Community Facilities Charges Catchment
- Arterial Road (Guide Only)

© The State of Queensland (Natural Resources and Water) [2007].
Based on Cadastral Data provided with the permission of the Department of Natural Resources and Water (Current as at September 2008). While every care is taken to ensure the accuracy of this data, the Department of Natural Resources and Water makes no representations or warranties about its accuracy, reliability, completeness or suitability for any particular purpose and disclaims all responsibility and all liability (including without limitation, liability in negligence) for all expenses, losses, damages (including indirect or consequential damage) and costs which you might incur as a result of the data being inaccurate or incomplete in any way and for any reason.

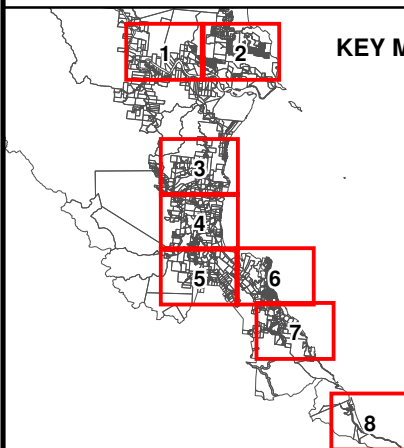


0 500 1,000
metres

Scale 1:30 000 @ A3



KEY MAP



Data Used Under Licence
to Cairns Regional Council

Drawn: SB

Checked: DS

Approved: NC

Date: 18/05/2010

Rev: 1.2

DOUGLAS
SHIRE COUNCIL

DOUGLAS SHIRE COUNCIL

ADOPTED INFRASTRUCTURE CHARGES 2015

PUBLIC PARKS AND LAND FOR COMMUNITY FACILITIES TRUNK INFRASTRUCTURE

PROJECT NUMBER:
0706-1

GRID:
5

DRAWING:
DSC_PIP_PPLC_005.WOR

LEGEND

PUBLIC PARKS AND LAND FOR COMMUNITY FACILITIES

- Local Recreation Park
- District Recreation Park
- District Sports Park
- Local Govt Wide Recreation Park
- Local Govt Wide Sports Park
- Community Facilities
- Other Open Space
- Land for Drainage Purposes
- Conservation

STATUS OF INFRASTRUCTURE

- Future Park
- Park Upgrade

GENERAL

- Property Boundary
- Public Parks and Land for Community Facilities Charges Catchment
- Arterial Road (Guide Only)

© The State of Queensland (Natural Resources and Water) [2007].
Based on Cadastral Data provided with the permission of the Department of Natural Resources and Water (Current as at September 2008). While every care is taken to ensure the accuracy of this data, the Department of Natural Resources and Water makes no representations or warranties about its accuracy, reliability, completeness or suitability for any particular purpose and disclaims all responsibility and all liability (including without limitation, liability in negligence) for all expenses, losses, damages (including indirect or consequential damage) and costs which you might incur as a result of the data being inaccurate or incomplete in any way and for any reason.

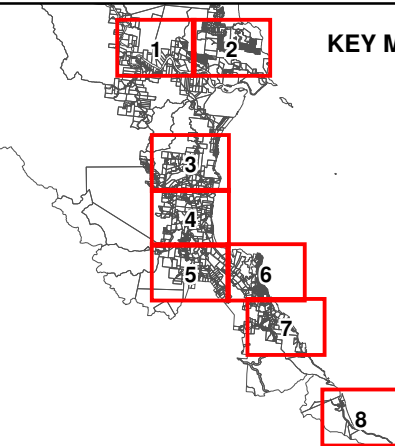


0 500 1,000
metres

Scale 1:30 000 @ A3



KEY MAP



Data Used Under Licence
to Cairns Regional Council

Drawn: SB

Checked: DS

Approved: NC

Date: 18/05/2010

Rev: 1.2

DOUGLAS
SHIRE COUNCIL

DOUGLAS SHIRE COUNCIL

ADOPTED INFRASTRUCTURE CHARGES 2015

PUBLIC PARKS AND LAND FOR COMMUNITY FACILITIES TRUNK INFRASTRUCTURE

PROJECT NUMBER:
0706-1

GRID:
6

DRAWING:
DSC_PIP_PPLC_006.WOR

LEGEND

PUBLIC PARKS AND LAND FOR COMMUNITY FACILITIES

- Local Recreation Park
- District Recreation Park
- District Sports Park
- Local Govt Wide Recreation Park
- Local Govt Wide Sports Park
- Community Facilities
- Other Open Space
- Land for Drainage Purposes
- Conservation

STATUS OF INFRASTRUCTURE

- Future Park
- Park Upgrade

GENERAL

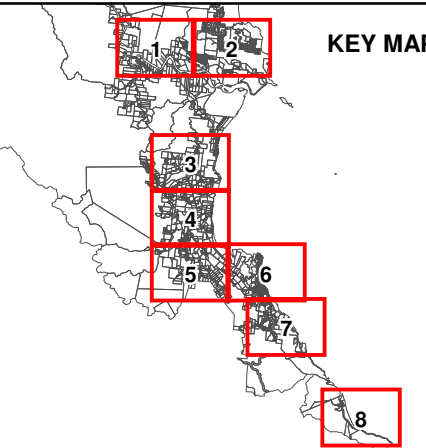
- Property Boundary
- Public Parks and Land for Community Facilities Charges Catchment
- Arterial Road (Guide Only)

© The State of Queensland (Natural Resources and Water) [2007].
Based on Cadastral Data provided with the permission of the Department of Natural Resources and Water (Current as at September 2008). While every care is taken to ensure the accuracy of this data, the Department of Natural Resources and Water makes no representations or warranties about its accuracy, reliability, completeness or suitability for any particular purpose and disclaims all responsibility and all liability (including without limitation, liability in negligence) for all expenses, losses, damages (including indirect or consequential damage) and costs which you might incur as a result of the data being inaccurate or incomplete in any way and for any reason.



0 500 1,000
metres

Scale 1:30 000 @ A3



RURAL AREA - MOWBRAY RIVER TO
MOSSMAN RIVER (PPLC7)

PORT DOUGLAS (PPLC1)

CORAL SEA

CASSOWARY

MOWBRAY

RURAL AREA - SOUTH OF MOWBRAY RIVER (PPLC6)

OAK BEACH

Data Used Under Licence
to Cairns Regional Council

Drawn: SB

Checked: DS

Approved: NC

Date: 18/05/2010

Rev: 1.2

DOUGLAS
SHIRE COUNCIL

DOUGLAS SHIRE COUNCIL
ADOPTED INFRASTRUCTURE CHARGES 2015

PUBLIC PARKS AND LAND FOR COMMUNITY FACILITIES TRUNK INFRASTRUCTURE

PROJECT NUMBER:
0706-1

GRID:
7

DRAWING:
DSC_PIP_PPLC_007.WOR

LEGEND

PUBLIC PARKS AND LAND FOR COMMUNITY FACILITIES

- Local Recreation Park
- District Recreation Park
- District Sports Park
- Local Govt Wide Recreation Park
- Local Govt Wide Sports Park
- Community Facilities
- Other Open Space
- Land for Drainage Purposes
- Conservation

STATUS OF INFRASTRUCTURE

- Future Park
- Park Upgrade

GENERAL

- Property Boundary
- Public Parks and Land for Community Facilities Charges Catchment
- Arterial Road (Guide Only)

© The State of Queensland (Natural Resources and Water) [2007].
Based on Cadastral Data provided with the permission of the Department of Natural Resources and Water (Current as at September 2008). While every care is taken to ensure the accuracy of this data, the Department of Natural Resources and Water makes no representations or warranties about its accuracy, reliability, completeness or suitability for any particular purpose and disclaims all responsibility and all liability (including without limitation, liability in negligence) for all expenses, losses, damages (including indirect or consequential damage) and costs which you might incur as a result of the data being inaccurate or incomplete in any way and for any reason.

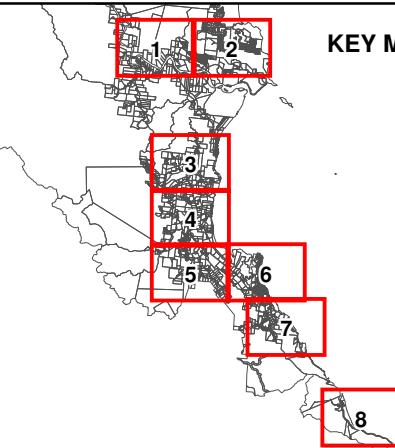


0 500 1,000
metres

Scale 1:30 000 @ A3



KEY MAP



Data Used Under Licence
to Cairns Regional Council

Drawn: SB

Checked: DS

Approved: NC

Date: 18/05/2010

Rev: 1.2

DOUGLAS
SHIRE COUNCIL

DOUGLAS SHIRE COUNCIL

ADOPTED INFRASTRUCTURE CHARGES 2015

PUBLIC PARKS AND LAND FOR COMMUNITY FACILITIES TRUNK INFRASTRUCTURE

PROJECT NUMBER:
0706-1

GRID:
8

DRAWING:
DSC_PIP_PPLC_008.WOR