

5.11. GO DOUGLAS! 2017

REPORT AUTHOR(S)

Contributions from all Douglas Shire Council teams
Linda Cardew, Chief Executive Officer

DEPARTMENT

Office of the Chief Executive Officer

RECOMMENDATION

That Council receives and notes report and the 2017 *Go Douglas!* e-book.

EXECUTIVE SUMMARY

This report and accompanying 2017 *Go Douglas!* E-book present an outline of some of the operational initiatives and progress made by Council's administration during 2017. It is a fine celebration of the Council, no longer "new", and our fourth full calendar year of achievements. It shows the work of capable teams who are proud of Douglas, committed to the community and to the future, positive growth of the Shire. It shows that the teams who serve Council and the community are people with passion and good humour. I wish to take this opportunity to thank all staff across the Council who have again worked tirelessly and enthusiastically throughout the year to ensure that Council's vision for a sustainable future is achieved.

BACKGROUND

Each quarter an overview of Council's operations is provided by the Chief Executive Officer to Council's Ordinary Meetings. The aim of these reports is to communicate how the administration is managing the diverse activities and challenges arising in the course of Council's business, and to summarise work in progress and the milestones achieved. Detailed reports over past months can be located on Council's website.

As for each year since de-amalgamation, the final report for this year is presented as an e-book, created by our teams as a visual account of just some of the work that they have done. All videos contained within are the original, unedited work of staff. The e-book format differs from that of traditional reports and Councillors and the community are encouraged to enjoy a more interactive account of operational projects and initiatives.

FINANCIAL/RESOURCE IMPLICATIONS

Council's operations are conducted in accordance with the adopted annual budgets.

RISK MANAGEMENT IMPLICATIONS

Council's operations have been subjected to an early risk assessment process.

SUSTAINABILITY IMPLICATIONS

Economic:

The twin pillars of financial and economic sustainability underpin all Council's operations.

Environmental:

Environmental management is a priority consideration in the delivery of all Council operations and services.

Social:

The diverse communities of Douglas are Council's clients. Council's operations, services and programs are designed and delivered to support the people of Douglas.

CORPORATE/OPERATIONAL PLAN, POLICY REFERENCE

Council's operations are conducted as required by the Local Government Act 2009, and in accordance with all applicable policies and the Douglas Shire Council Operational Plan 2017 - 2018 adopted 27 June 2017.

CONSULTATION

Internal: Council's General Managers, Branch Managers, Team Leaders and all Council staff have been consulted and have contributed to the preparation of this report.

ATTACHMENTS

1. Go Douglas! Celebrating 2017 **[5.11.1]**



go douglas! celebrating 2017

Raising the bar & kicking goals in 2017

At the close of our fourth year after de-amalgamation we are no longer the “new” Douglas. Established, competent and proud to support Council's vision and the community's aspirations, our officers are committed to their roles at Council and to the community in which they live and work.

This annual edition of *Go Douglas!* is again a snapshot of our year. It's not all we do by any means, but instead is a light-hearted and informative record of the diversity of Council's work.

Council continues to perform strongly in all areas of its business and remains on target to achieve a balanced budget by 2019/2020. With an operating budget of just over \$42.6 million and the largest ever Douglas Shire Council capital works program of over \$37 million, 2017 has seen the successful delivery of numerous programs and projects across the Shire, and the implementation of many initiatives and innovative work practices that have reduced costs and increased efficiencies. We are also proud to have paid out all loan borrowings in 2017.

In this year to date, we have secured over \$16.2 million in external funding, with more than \$54 million achieved since 2014. Major projects include the Port Douglas Reservoir, the Mossman Sewerage Treatment Plant river bank stabilisation, the road reseal program, Noah Creek and Diggers bridges. The completion of all Works for Queensland projects included the construction of the stunning Flagstaff Hill Walking Trail in Port Douglas, works at Teamsters Park construction of public toilets at the Daintree Ferry, an extensive footpath renewal program, maintenance of the Zig Zag track at Buru, much-needed upgrades of the Water Treatment plant and the Killaloe Transfer Station. Our multi-skilled staff have directly delivered much of the work which has also brought significant economic benefits for local contractors and businesses working in partnership with Council.

Again this year Council's programs and projects have strengthened the economy, driven tourism, supported the arts and sports and protected the environment. Council adopted the 2018 Douglas Shire Planning Scheme which will shape the region's economic prosperity and environmental sustainability for the next 10 years. It also developed the 2017-2021 Economic Development Strategy, provided ongoing support for the Mossman District Nursing Home project, constructed improved access for the Yalanji Cemetery, and developed a

178 of 214 Action Brief for a domestic violence facility. The new Port Douglas Pump Track has provided hours of fun for local children and the number of library customers continues to grow. Land management plans were reviewed, and a strategy to increase utilisation of Teamsters Park developed.

With an increased focus on environmental initiatives, projects targeted a reduction in waste generation, increased recycling, the delivery of coastal management works and the implementation of a Management Plan for the *Aedes aegypti* mosquito.

All the while our teams have delivered quality frontline services, leadership in governance and property matters, civil works, water and wastewater, public space management, local laws, development planning services and disaster management. Behind the scenes our finance and IT teams ensure that we remain on track and strong.

Since 2014, Douglas Shire Council has proven it is a progressive and capable Council that punches above its weight. We are leading the charge for the reduction of plastic in Douglas, lured gardening guru Costa Georgiadis to the “Let It Grow” Douglas Garden Awards, and have run numerous community events and programs, and supported many others.

One of Council's greatest assets is its staff. Every member of the Council team plays a crucial role in ensuring the ongoing community sustainability of the Shire. Some tackle unpredictable and dangerous tasks in the middle of the night or work in remote and exceedingly uncomfortable environments. They solve complex problems, find savings and deliver with a smile. I am grateful for the efforts of all.

The success of Council is an acknowledgement of the strong partnership between the Mayor, Councillors and the professional teamwork of officers across Council. Again, I extend my appreciation to the Mayor, all Councillors and staff for their dedication and contributions to ensure Douglas Shire Council continues to be concise, contemporary and compliant.

As in previous years, all photos and videos in this 2017 snapshot are the creative and unedited contributions of staff. Go Douglas!

Linda Cardew
Chief Executive Officer



Meet some of our crew and learn more about what they do ...

(click on images to play videos)

Attachment 5.11.1

179 of 214



WATER QUALITY CAPITAL WORKS JOURNEY



DOUGLAS LIBRARIES TEAM



MAINTENANCE CREW



PATCHING CREW



WATER TEAMS



OPEN SPACES TEAM



BRIDGE CREW



WASTEWATER TEAMS



CIVIL WORKS CREW



CONCRETE CREW



STORES ADMINISTRATOR

Ordinary Council Meeting - 12 December 2017

**** FRONT COVER IMAGE: OPEN SPACES PEST MANAGEMENT TEAM - 2016 GO DOUGLAS! CHAMPIONS**

January

Economic Development Strategy adopted

Council adopted an Economic Development Strategy 2017 – 2021 to kick off the new year.

The Strategy provides an opportunity for key stakeholders to play an important role in the development and implementation of the Strategy and actions.

While Council plays a lead role in economic development throughout the Shire, the establishment of a number of taskforces to address the identified themes will create business, industry and community ownership of actions and opportunities.

The strategy has identified five Key Priority Areas that include:

- Creating a Study, Training and Entrepreneur Incubator Centre;
- Further developing an Allied Health Hub and Health Tourism;
- Increasing the resilience of the Sugar Industry;
- Developing Douglas Shire as Australia's Leader in Sustainable Development; and
- Attracting and Facilitating Investment.



*Click on image
to see the 2017-
2021 Economic
Development
Strategy*

24 Building Applications received
186 Douglas Cards issued

AROUND THE TRAPS



Mary Graham was appointed the new team leader for the Organisational Business Support Unit (OBSU). The OBSU & Frontline teams processed 3283 receipts and 1367 customer requests for the month.



Sewer reticulation relining and refurbishment of house connection branches continued to identify cracked and broken pipes requiring repairs, and to reinforce the infrastructure to prolong the longevity of the asset.

Daintree cassowary survey gets underway

With a little help from the Environmental Health Officers, the Local Laws visited properties north of the Daintree River to deliver a survey to local residents and businesses.

The survey was designed to gauge what the community know about the impacts of domestic and feral animals on Cassowaries and what the community thinks are the biggest impacts on the Cassowary and its habitat.

'If Only' display gets Douglas disaster-ready

The 2016-17 Disaster preparedness campaign was the culmination of 12 months collecting of cyclone and flood experiences of Douglas residents from group discussions and personal interviews.

By getting local people talk about their experiences and hear the experiences of others it was hoped to improve community engagement with messages of 'it can happen here'.

Twelve videos were released through Council's [YouTube](#) channel and [Facebook](#) page and were picked up by Queensland Fire and Emergency Services who added the videos to their website portal.

The clips and stories were shown in an exhibition in the Mossman Administration Building over the cyclone season.



AROUND THE TRAPS



The Daintree water plant is located on a hillside and the soil was eroding adjacent to the raw water reservoir which could have potentially undermined the reservoir causing slippage. A new retaining wall was constructed to stabilise the bank and the area finished with concrete to prevent any further erosion.

"Many thanks for keeping your little caravan park well serviced. We have just stayed there for a week and found it to be one of the friendliest parks we have been to. Hats off to Bob."

Click on images below to watch 'If Only' clips



Australia Day Awards celebrate achievements

More than 250 people celebrated the 2017 Douglas Shire Australia Day Awards & Citizenship Ceremony at Rex Smeal Park.

Respected marine conservation, research and ecotourism pioneer John Rumney was announced as the 2017 Douglas Shire Citizen of the Year; teenage role model Jasmine Faishney received the Young Citizen of the Year, Douglas Shire Historical Society president Freda Wilson was awarded Volunteer of the Year and Mossman Markets coordinator Joan Vico was presented with a Civic Recognition Award.

Fifteen new citizens from the UK, the Philippines, Zimbabwe, Chad, Switzerland, the Netherlands, India, the Republic of Ireland and Italy who have chosen to call the Douglas Shire home were also welcomed at the Australia Day Citizenship Ceremony.



Attachment 5.11.1 February

183 of 214

Sport & Recreation Expo scores for local clubs

Council organised the 2017 Douglas Shire Sport & Recreation Expo was held at Port Douglas Community Hall on Saturday February 4.

Despite the inclement weather, approximately 300 people attended the expo which informed our communities about various local sport and recreational activities and services while promoting health, wellbeing and active lifestyles for families and individuals of all ages.

There were almost 40 information stalls, demonstrations, speakers, come and try sessions and an opportunity to promote club sign-on days, upcoming seasons, membership and volunteering opportunities and networking with other clubs and businesses.

Former Broncos, Queensland and Australian rugby league superstar and current Channel 7 News sports presenter Shane Webcke was guest speaker courtesy of the Local Government Association of Queensland.

Council also partnered with the *Port Douglas & Mossman Gazette* to produce and distribute a 32-page [promotional feature booklet](#) filled with information from 26 local clubs and organisations.

Pack helps new residents Discover Paradise

Council put together the [Discover Paradise Relocate Resources Pack](#) filled with all the information anyone needs if they are considering relocating or emigrating to the Douglas Shire.



Ordinary Council Meeting - 12 December 2017

AROUND THE TRAPS



Mossman Library hosted award-winning author Barbara Hannay for an enlightening talk on her experiences and insights into being a successful author.

The Queensland Audit Office visited Council for an audit planning visit.

The visit included a review of Council's progress in addressing any outstanding audit issues and the development of key audit milestones for the major accounting processes that needed to be undertaken in the lead up to final audit certification of Council's financial statements in October.

This was the first of three visits during the year. Subsequent visits by the QAO were for interim audit in June and final audit in September.

Click on image to access Discover Paradise Relocate Resources Pack

Douglas Business Forum attracts big guns

The Douglas Business Forum was held on Tuesday 21 February at QT Resort Port Douglas with approximately 120 people attending.

Guest speakers included one of Australia's most successful businessmen and local tourism operator Chris Morris, of the Morris Group, business developer Max Sylvester and web guru Nicky Jurd, as well as other local business operators.

Feedback from forum participants as part of the evaluation indicated positive results with most stating the event was informative and worthwhile attending and that they would consider attending and recommending to others they attend similar events in the future.

An [Economic Development Initiatives](#) booklet was created to inform delegates and the broader community of projects and programs initiated and implemented by Council.

Heritage-listed Sugar Wharf receives facelift

As part of the 2016/2017 Capital Works Program, Council engaged a local contractor to replace the roof of the historic Port Douglas Sugar Wharf.

Initially an application was sent to the Department of Heritage for the works. A special order was then place to secure heritage-style galvanised iron for the project.

As part of the works, a quantity of asbestos was to be removed from the rear end of the building.

Works commenced with the setting up of scaffolding around the building prior to the removal and installation of the new roof.

184 of 214



*Click on image to
access Economic
Development
Initiatives booklet*



AROUND THE TRAPS



The Mossman water plant driveway was undermined on the edges creating a traffic hazard.

The driveway was repaired by excavation and the placement of compacted rock fill to the edges, effectively widening the driveway and stabilising the surrounds.

This has greatly improved the safety aspects for all road users, particularly heavy trucks that negotiate this driveway for delivery purposes.

Extra display facilities and devices were installed in Council's disaster coordination centre to provide for quicker display and analysis of situational assessments and reviews during disaster situations and serious weather events.

Frontline team member Tracey Miller completed Psychological First Aid & Evacuation training.

Council crew to the rescue to preserve water supply

As a result of high volume water due to a wet weather event, clearing out vegetation, silt and other matter from the intake was required to ensure water could still flow through to the water treatment plant for processing and continued supply to the community.



\$2 million secured for local infrastructure

Council secured almost \$2 million in funding for 12 local projects under the State Government's 2016-17 Works For Queensland program.

The successful projects were the completion of the Flagstaff Hill Walking Track (\$550,000), Killaloe and Cow Bay Transfer Station upgrade (\$285,000), Kulki National Park intersection upgrade (\$250,000), Mossman footpath renewal program (\$200,000), Cape Tribulation traffic calming & drainage works (\$150,000), Teamster's Park upgrade for RV parking (\$150,000), north side toilets for Daintree Ferry (\$120,000), resheeting of Zig Zag Track (\$80,000), automated irrigation at Port Douglas Sports Complex (\$75,000), refurbish of building exterior (\$60,000) and changeroom/toilets (\$40,000) and upgrade electrical system at Victor Crees Memorial Building (\$50,000).



AROUND THE TRAPS



Council's funding streams presentation for the Business Development Fund, Community Support Program and Event Funding Program was held on 14 February 2017 in the Council foyer.

"Last Monday Craig, Ben and Dimitri made a surprise appearance in front of my property in Miallo. They did a fantastic job at my place cleaning up the remains of a huge tree that had come down a few days prior. Also the driver of the truck deserves a thank you. The men aforementioned certainly deserve a big 'thumbs up' for their excellent job!"

March

Council calls for tougher croc zones in Douglas

Council wrote to the State Government requesting parts of the Douglas Shire be rezoned under the [Queensland Crocodile Management Plan](#) to minimise the risk of crocodiles.

Council officially requested Four Mile Beach in Port Douglas, Newell Beach, Wonga Beach, Cooya Beach and Oak Beach to be rezoned from Zone E (Monitoring and Education) to Zone C (Targeted Management Zone).

The rezoning of these beaches as well as specified boat ramps and freshwater creeks in the Douglas Shire would allow for the removal of all crocodiles larger than two metres and any crocodile displaying dangerous behaviour.

Council's request also called for Ferndale Lake in Port Douglas, local boat ramps and freshwater creeks upstream from Foxton Bridge in Mossman, Shannonvale Causeway and Spring Creek Crossing, Mowbray to be rezoned from Zone E to Zone C.

Arts Policy & Strategy outlines creative vision

Council adopted the [Arts Policy](#) and [Arts Strategy 2017-2021](#) in March.

The purpose of the Arts Strategy is to provide a clear vision and direction for Council to facilitate action and meet the creative aspirations of the Shire through collaboration and partnering.

The Arts Strategy consultants completed targeted consultation in October 2016, with public feedback on the draft policy and strategy invited in February 2017.



DOUGLAS SHIRE COUNCIL ARTS STRATEGY
2017 - 2021

DOUGLAS SHIRE COUNCIL Prepared by Yoko Akai and Tim Welford-Giles

*Click on
image to
access the
Arts Strategy
2017-2021*

AROUND THE TRAPS



The Craiglie pump station is a critical part of the water reticulation network at Port Douglas.

One of the pumps had reached the end of its service life and was replaced with a new pump and motor assembly.

The replacement pump will assure equipment availability and water supply to the community.

The process water pumps at the Daintree water plant also reached the end of their service life.

A new dual pump skid was installed to ensure service water is available for the plant operations.

To reduce duplication of effort, Council further automated its asset data capture and recording processes to allow information to be electronically captured and processed on site by Council officers working in the field.



Future of commercial fishing industry secured

The future of the Port Douglas commercial fishing industry was secured with a landmark decision by Council.

Council agreed to issue the Port Douglas Commercial Fishermen's Association with a Permit to Occupy approximately 600 square metres of Lot 96 adjacent to new proposed marina berths.

The PDCFA will utilise the land for storage required for trawler/fishing operations, amenities, parking and the out-of-season storage of dories for the next three years for a nominal annual fee of \$150.

Prior to the expiration of this three-year period, Council will consult with the PDCFA to determine whether a further non-commercial tenure period is required or if a longer lease and change in reserve purpose is required to pave the way for a commercial "fishermen's wharf" on the site.

AROUND THE TRAPS



Four Mile Beach revegetation



Newell Beach water mains upgrade



Sharing Stories @ Mossman Library



Free computer classes @ library

Gabori Sisters exhibition @ Mossman Library

The 2016/17 budget review was adopted and the revised figures were incorporated into Council's monthly financial reports for the remainder of the financial year.

Council also commenced its 2017/18 budget process, which included the determination of key milestone dates incorporating a number of planned workshops with Councillors to consider the major components of the budget.

These components include Council's operating revenue and expenditure requirements (including fees and charges, rates and materials and services), capital revenue and expenditure priorities and Council's long term financial forecast which incorporates financial sustainability targets.

Communication upgrades were undertaken at several Council sites, including splitting traffic over more than one service at the Port Douglas Community Centre to improve internet access. Detailed work commenced on progressing the implementation of a number of IT related improvement recommendations provided by the Queensland Audit Office.

April

Mossman nursing home begins to take shape

External works and infrastructure upgrades to support The Salvation Army's development of an aged care facility commenced in April.

The works included the construction of a new road and intersection, augmentation of Council's water supply and sewerage network and the installation of an underground drainage system to control both external and internal stormwater flows.

Site works for the construction of the aged care facility is anticipated to commence in late 2017 with building works to take place in early 2018.

Green light for Proposed Planning Scheme

Council will proceed with a new Proposed Planning Scheme after assessing more than 600 submissions from the community.

Council had been working with the community for the past two years on the "evolutionary" Proposed Planning Scheme that promotes environmental responsibility, utilises the region's natural resources efficiently, ensures the region's atmosphere remains clear and clean and supports the development of a diverse thriving economy.

The Proposed Planning Scheme to be submitted for adoption to the State Government includes the possibility of investigating additional land available for a retirement facility in Port Douglas and makes provisions for the establishment of a Special Entertainment Precinct at a later date.



AROUND THE TRAPS



Council offered residents free green waste disposal to clean up their back yards in April.



The backwash residual plant at the Mossman water plant needs to be renewed and upgraded to meet compliance and licencing conditions.

As the first step in this project a consultant was engaged to investigate alternative backwash water treatment options.

A scope of works was then developed and the next stage of this project has seen a contract awarded with works expected to commence later in the year.

Safer Streets with CCTV cameras installed

As part of the Safer Streets program Council applied for funding to improve security in George Davis Park and Mill Street.

This project's deliverables were defined with consultation from Mossman Police and other community groups.

Funding was secured to install two security cameras in Mill Street overlooking Pinjarra Place and the donation bins in the adjacent car park.

A second part of this project was to install extra lighting in George Davis park along with three security cameras to discourage unruly behaviour in and around the playground area and skate park.



Council team helps to Eliminate Dengue

Monitoring the population of our newly-released Wolbachia virus-carrying mosquitoes is conducted regularly by Council Environmental Health Officers which will help eliminate dengue fever in the Shire.

The Wolbachia mozzies were bred in a laboratory set up in Mossman with the research team implementing the program.



LED sign keeps travellers informed at ferry

As part of the 2016/2017 capital works program, the Building Facilities team designed and installed a suitable LED sign for the Daintree Ferry ticket office.

The sign displays information to assist tourists and locals who travel on the Cape Tribulation Road north of the Ferry.

It needed to be robust, able to stand up to heavy rainfall and high humidity and is programmed by a computer operated inside the ticket office to display a series of messages.



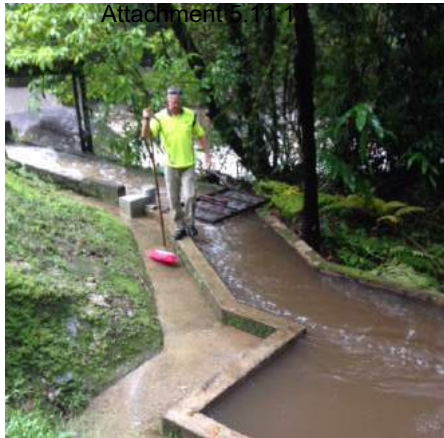
AROUND THE TRAPS



The first load of electronic waste recovered at Killaloe Transfer Station was exported in April.

A total of 8.6 tonnes of electronic waste was exported for recycling in 2016/17.

“A big thank you to the council workers and Ergon workers! These guys worked tirelessly through the night, in the rain to get our power back on, and keep our drinking water running and safe to drink. Some of them are still working right now. They haven't slept. They haven't stopped. They do it for you, your kids, the whole community.”



Crews clear Rex Creek intake to fix water supply

Due to a wet weather event, the intake at Rex Creek in Mossman was inundated with debris, sand and silt washed downstream in the deluge.

The debris blocked up the intake to the water supply which then had to be cleaned out to enable water to flow through to the water treatment plant.

AROUND THE TRAPS

190 of 214



More than 3000 people participated in Anzac Day Services throughout the Douglas Shire on April 25. Up to 1000 people turned out for the Anzac Day Dawn Service held at the cenotaph, with more than 300 people enjoying the free Council-sponsored Anzac Day Community Breakfast held at the Mossman Indoor Sports Centre immediately afterwards.

Council also sponsored the free Anzac Day Community Breakfast held in Cow Bay after its own Dawn Service, with around 150 people appreciating the opportunity to share a bacon and egg roll with local Diggers.

Hundreds of schoolchildren joined RSL members in the Port Douglas Anzac Day Parade cheered on by up to 2000 people as they made their way down Macrossan St to Anzac Park for the traditional Anzac Day Memorial Service.



May

Council leading the way on climate change

Douglas became the first Council in Queensland to complete the first two phases of a Coastal Hazard Adaptation Strategy (CHAS) under the State Government QCoast2100 program.

Local Government Association of Queensland CEO Greg Hallam informed Council the Douglas Shire had been successful in its application for funding for Stages 3-8 enabling Council to complete the CHAS.

The strategy will help Council identify cost-effective climate change mitigation measures and plan for appropriate development and growth in the Douglas Shire.



Work begins on new Port Douglas reservoir

May saw the start of the capital works project to construct a new 20ML water reservoir at Craiglie.

Earthworks commenced in preparation of pipework and concrete slab works.

This project was made possible thanks to State and Federal funding.



AROUND THE TRAPS



The Daintree water plant required the replacement of aged valves and controllers. A project was successfully completed to replace all the aged equipment to ensure the filtration process operates at optimum levels and the filtration plant meets compliance.

Council will trial new technology to capture feral pigs utilising an automated trap that can be operated remotely via mobile phone. The new pig-trapping technology uses cameras to capture movement at the trap site, with photos sent to a remote operator via text message or email who can then use the same technology to close the gates and trap the pigs. The technology is extremely efficient and will mean resources are not wasted with staff having to manually check and maintain traps.

Power upgrades for Port Douglas parks

A number of power upgrades were completed in Port Douglas parks to support public events.

As Dixie Park, the main power box that feeds Dixie Park and the Spiegeltent during Carnivale was upgraded to a stainless steel box with increased output to assist the growing demands just in time for Carnivale.

A new power supply was trenched into Market Park to power some of the mobile food stalls located behind St Mary's Church. Provision was also included to install two new LED street lights in the Park to improve safety and lighting at night.

Extra power boxes were also installed in Rex Smeal park – one 15 amp outlet under the fig Tree and a three phase outlet further out near the palm trees.

A third outlet was recommissioned behind the toilet block for the use of hot food stalls at the Sunday Markets.



192 of 214

Photo competition encourages public recycling

Council installed additional public space recycling bins throughout the Shire in an effort to reduce the volume of debris entering the Great Barrier Reef and to increase public place recycling rates.

To encourage others to recycle, a photo competition was run for local amateur photographers to submit up to five of their favourite photos to showcase the natural beauty of our area.

The winning photos have been placed on each of the new recycling bins.



31 Building Applications received
1666 customer requests for assistance

Ordinary Council Meeting - 12 December 2017

AROUND THE TRAPS



Council hosted an activity for Indigenous students of Mossman State High School and St Augustine's School as part of National Reconciliation Week.

The event provided students with a greater understanding and appreciation of the significance of 1967 Referendum that saw over 90 per cent of Australians vote to give the Commonwealth the power to make laws for Aboriginal and Torres Strait Islander peoples and recognise them in the national census. It also taught students about the High Court of Australia's landmark Mabo decision in 1992, which legally recognised that Aboriginal and Torres Strait Islander peoples have a special relationship to the land.

Council will be completely debt-free before the end of the financial year after resolving to fully repay loans held with the Queensland Treasury Corporation (QTC) which were attributed to Council during the deamalgamation process.

Construction of multi-use pump track paves way for riders to showcase skills

Construction of the Port Douglas pump track is now complete.

The facility is a multi-use track for bikes, scooters, skateboards and rollerblades.

It is suitable for all levels of skill by users from young beginners to expert tricksters.

The track has proven to be very popular and a great addition to the Port Douglas Sports Complex.

The project was made possible through a \$100,000 grant from the State Government Department of National Parks, Sport & Racing.



AROUND THE TRAPS



As part of the 2016/2017 Capital Works Program Council engaged a local contractor to paint the outside of the Port Douglas Community Hall. They also treated and sealed the veranda timbers and painted the veranda roof beams.

All the eaves were painted and the steel and timber post around the building were sanded back and fresh coatings applied to give the front of the building a fresh new look.

Regional Arts Development Fund (RADF) Liaison Officers from Cook Shire, Cassowary Coast, Cairns Regional, Tablelands Regional and Mareeba Shire Councils and Evelyn from Arts Queensland in Brisbane attended a forum hosted by Douglas Shire Council at the Mossman Gorge Centre to give officers the opportunity to network and share information on the arts funding program.

Sorry Day service honours Stolen Generation

On 26 May Council hosted the annual Sorry Day commemoration ceremony at the Council Chambers in Mossman.

Sorry Day is a day to remember and honour the many Aboriginal people who were forcibly removed as children from their families and taken to institutions, foster homes or into adoption.

The event was attended by approximately 50 people, with students from Mossman State High School raising the flags and delivering extracts from the Apology Speech delivered by then-Prime Minister Kevin Rudd in 2008.



New citizens welcomed to Douglas Shire

Fifteen new Australian citizens were welcomed to the Douglas Shire at a ceremony at the Mossman Shire Hall on Thursday 18 May.

Our new citizens are originally from places as culturally diverse as Northern Ireland, China, Croatia, the UK, the United States, Italy, France, Japan, Sri Lanka, India and New Zealand.

Kuku Yalanji elder Alfie Diamond delivered a Welcome to Country and special guests included Queensland Minister for Local Government and Aboriginal and Torres Strait Partnerships Mark Furner and Director General of the Department of Aboriginal and Torres Strait Partnerships Clare O'Connor.



Kids join in National Simultaneous Storytime

Local children and their parents joined in National Simultaneous Storytime at the Mossman Library.

The event sees libraries and schools around Australia reading the same book to children at the same time.



*Click on image to
watch National
Simultaneous
Storytime*

Ordinary Council Meeting - 12 December 2017

AROUND THE TRAPS



Council facilitated the performance of Camerata's Greatest (String) Hits at Mossman Shire Hall which was enjoyed by more than 150 residents.

Known for its adventurous programming, and building on the success of its sold out 2016 tour through south-west Queensland, Camerata took to the North to present a program where the worlds of contemporary and classic sit side by side, bringing together new Australian music with great classical music heroes.

Council offered a free mulch giveaway to residents from Friday 19 until Monday 22 May. The free mulch offer was available to all Douglas Shire residents during this period at the Killaloe Transfer Station and the Newell Beach Transfer Station.

Council's Biggest Morning Tea raised \$280 for the Cancer Council.

June

RV Strategy to improve visitor experience

The [Douglas Recreational Vehicle \(RV\) Strategy](#) was developed by Council.

The strategy provides a coordinated approach to managing and providing information services and facilities to meet the needs and requirements of the RV traveller market.

This strategy will assist to improve the visitor experience to the region, help inform and support the increasing number of RV travellers to access services and facilities, protect the environment and enhance the profile of the region within RV traveller networks.

Council has also unveiled plans to create an innovative gateway to the Douglas Shire at Teamsters Park in Craiglie which could see a touchscreen information kiosk, interpretive signage, RV parking bays, an electric car charger, new amenities, pathways and undercover barbecue areas installed.

Young Max gives top tips about recycling

A series of educational [YouTube videos](#) were developed to inform the community about recycling in our Shire and increase the recycling rates in accordance with Council's Waste Reduction and Recycling Plan.

The videos star seven-year-old Max Dowling who is passionate about recycling and reducing the amount of waste going to landfill.

The videos were released in November to coincide with National Recycling Week.

Click on image to read the RV Strategy



Click on images to see Max's recycling tips



AROUND THE TRAPS



Council offered Killaloe Transfer Station as the drop-off location for ChemClear in June. This service provides agricultural and veterinary chemical users with a collection and disposal pathway for their unwanted chemicals.

The hardware and software systems responsible for controlling the automated operations of the Mossman water plant were upgraded to enhance plant performance and computer equipment reliability.

The Mossman water plant's turbidity meters were also upgraded.

The turbidity meters on each ultrafiltration rack measure filtered water turbidity to ensure compliance with critical control points.

The automated valve controls at the water treatment plant were also upgraded to improve performance.

Planning Scheme partnership recognised

Douglas Shire Council was the only local government to be recognised at the Queensland Reconciliation Awards.

Council and Jabalbina Yalanji Aboriginal Corporation received the Highly Commended Award from Premier Anastacia Palaszczuk for being runner-up in the Partnerships category of the Queensland Reconciliation Awards for their efforts to develop the Return To Country Code under the new Douglas Shire planning scheme.

Record capital works investment in 2017/18

Council will deliver another record capital works program valued at almost \$20 million in 2017/18 and remains on track to achieve a budget surplus within two years.

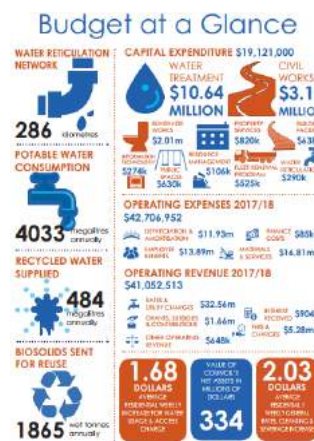
The [2017/18 Budget](#) marks Douglas Shire Council's third consecutive record investment in capital works while maintaining a tight rein on costs.

Major capital works investments over the next 12 months includes more than \$10.6 million for water treatment infrastructure including the construction of the new Port Douglas reservoir (\$8.4 million), almost \$3.2 million for civil works (including \$1.2 million for road resal program) and around \$2 million for sewerage upgrades.

Capital works projects scheduled for the new financial year include the completion of the spectacular Flagstaff Hill Walking Trail (\$260,000), an upgrade of the Diwan Sound Shell and cricket club shed (\$180,000) and a renewal of George Davis Park in Mossman (\$50,000).

Master Plans for the Mossman Pool Precinct, the proposed Fishermen's Precinct on the Port Douglas Waterfront as well as Front St and Macrossan St Streetscapes will help reinvigorate our major public spaces.

196 of 214



Click on images to see details of 2017/18 Budget



AROUND THE TRAPS

Council has committed to undertaking 28 actions over the next three years to become more environmentally sustainable.

Council's [Corporate Sustainability Strategy](#) highlights the importance of the Douglas Shire's natural assets and recognises Council's commitment to the protection of the natural environment and the importance of integrating sustainable environmental practices across Council's operations.

As part of the 2016/2017 Capital Works Program Council engaged local contractors to design and install fire hoses at Wonga Beach Van Park. As part of the works it was decided to extend the 100mm water main across the road to the van park to feed the new fire hoses to allow for future development and expansion.

Council refreshed its electronic mapping platform as part of a staged process towards the future implementation of a public mapping tool to be available on Council's website. This tool will provide useful information to the public such as details of planning zones, property boundaries and other geospatial information.

AROUND THE TRAPS

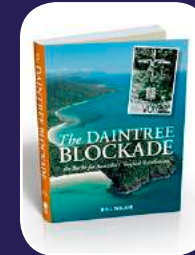


The Douglas Libraries team had a big month during June with a number of events taking place.

The team visited Port Douglas State School for Under-8s Day and spent the morning reading with students.

Mossman Library was the place to be during the school holidays with mask-making among the free activities organised for local children.

June also saw the launch of Douglas Libraries team member Bill Wilkie's book *The Daintree Blockade* which provides a comprehensive and insightful history on one of Australia's most significant environmental protests.



Click on image above to watch the launch of The Daintree Blockade



July

Construction begins on Flagstaff Hill trail

Construction of Stage 1 of the spectacular Flagstaff Hill Walking Trail began in July with the iconic track linking Four Mile Beach and Rex Smeal Park expected to be completed by late November.

Internationally-acclaimed track builders World Trail constructed Stage 1 of the gravel-based track from the existing stairs to the Flagstaff Hill lookout.

Construction included the use of helicopters to sling in building materials.

The \$700,000 Flagstaff Hill Walking Trail is destined to become a must-do attraction for visitors to Far North Queensland.



Marrs Creek pipework replaced without fuss

The existing water mains in the locality of Marrs Creek required upgrading and a capital works project was undertaken to install replacement pipework.

The project was successfully completed with minimal impact on local business and properties.



Bore works drill under Captain Cook Hwy

Under bore works were undertaken in preparation for water supply infrastructure to be connected under the Captain Cook Highway in Port Douglas.



AROUND THE TRAPS



Liz Leonard resigned from Council after more than two decades of service, with Lara Balzarolo joining the OBSU team.

Relining of sewer infrastructure is identifying any breaks and cracks requiring repair and strengthening the existing pipework to prolong the lifespan of the network.



As part of the 2016/2017 Capital Works Program Council engaged a local contractor to replace the ceiling sheets in the front portico of the Mossman Administration Building. They also rescrewed the front veranda roof and painted the roof sheeting, all the eaves were painted and the steel post around the building were sanded back and fresh paint applied to give the front of the building a fresh new look.

NAIDOC Week sings praises of language

NAIDOC Week 2017 (10–14 July) in Douglas commenced with the annual flag-raising ceremony at Council's Mossman Administration Building.

The event was well attended with approximately 120 people celebrating the national theme for NAIDOC Week of "Our Languages Matter".

Students from Mossman State High School performed *We Are Australian* in Kuku Yalanji language which received huge applause of appreciation from the audience, special thanks to Lenice Schonenberger who coordinated this activity.

Guest speakers on the day included Auntie Cissy Ross-Kelly, Jill Bradley and Janine Paterson and senior student Lenox Schonenberger from Mossman State High School.



Waste audit aims to improve recycle rates

Council staff undertook waste audits on public place recycling bins in the Port Douglas area in July.

Results showed recycling bins are being used in popular public spaces and have lower contamination rates than expected.

Audits will continue into the New Year and results will be used to inform future placement and service frequency of recycling bins in the Shire.



Water cartridges replaced for safe drinking

The Whyanbeel water plant ultrafiltration cartridges were replaced after reaching the end of their service life.

The project successfully replaced the 36 ultrafiltration cartridges to ensure that the filtered water is compliant and safe to drink for the community.



Ordinary Council Meeting - 12 December 2017

AROUND THE TRAPS



Douglas Libraries team members were busy during July, participating in the NAIDOC Week Baby Competition and the Mossman Show to encourage reading with young children.

Magnificent mosaic showcases the tropics

A magnificent mosaic showcasing the beauty of the tropics was unveiled by Mayor Cr Julia Leu in Port Douglas on July 17 with over 50 people in attendance

Life Amongst the Trees, a beautifully intricate tile creation at one of Australia's most picturesque public toilet blocks was planned and coordinated by local artist Sam Matthews with the help of Douglas Arts Base tutors Connie Rossi, Ellen Terrell, Liz Showniruk and Leanne Emmett and 116 community volunteers aged from five to 85.

The project was funded through the Regional Arts Development Fund (RADF), a State and Local Government partnership to support local arts and culture in regional Queensland.

The finished product is stunning, and feedback from participants and spectators has been fabulous.



Plastic Free Douglas get creative with kids

Council and Plastic Free Douglas planned a series of events throughout July to highlight the dangers of single-use plastics to our environment.

Council led the campaign for individuals to sign up for a Plastic Free July, disseminating newsletters with tips and tricks to participants who were challenged to give up plastic bags, takeaway coffee cups, straws and single-use water bottles.

Tangaroa Blue hosted a beach clean-up on 1 July with a team of eco-warriors collecting litter from Four Mile Beach and adding it to the Australian Marine Debris database.

The Clink hosted an encore screening of the documentary *A Plastic Free Ocean* while Council hosted a free kids "Don't Rubbish the Reef" recycled art workshop where the rubbish collected from Four Mile was turned into an educational display of marine life displayed at the Mossman Show.



AROUND THE TRAPS



Council has shown its support for the local tourism industry by providing more than \$480,000 annually for Tourism Port Douglas Daintree (TPDD) for the next three years.

Port Douglas Event Management will also receive \$20,000 annually over three years from Council, to support the Tropical Journeys Great Barrier Reef Marathon Festival.

A new bridge is on the way for Noah Creek on Cape Tribulation Road thanks to a \$1.125m grant from the Commonwealth Government's Building Better Regions Fund. Council will contribute a further \$375,000 to the bridge project.

"Your Douglas Shire attitude is exciting - all of those events and organisations getting together in order to decrease single use plastic bags. Good on YOU!"

August

Air quality monitored at Mossman & Newell

In response to public health complaints, monitoring of air quality and dust continued throughout the year at two locations in Mossman and Newell Beach.

The monitoring program is being assisted by Macquarie University which has loaned the equipment and is providing some technical support.

Results of the monitoring will be included in a report due in 2018.



Council approves multi-million-dollar reno

Approval was issued for a multi-million dollar renovation of the Central Hotel in Macrossan Street, Port Douglas.

The redevelopment seeks to preserve and enhance the façade of the original building while the internals of the building and beer garden will undergo significant change to modernise the premises and improve the entertainment experiences for residents and visitors alike.



Wastewater treatment plant gets upgrade

SBR aeration diffusers were replaced as part of the project to overhaul the entire aeration system in the Port Douglas Wastewater Treatment Plant.



AROUND THE TRAPS



The consultation process continued during August and September after the development of a Proposed Planning Scheme.

Council's inaugural newsletter to the arts community was launched via email to networks, Facebook and Council's website. The newsletter informs the community about Council venues and arts activities and funding, as well as showcasing local artists and their projects. Hard copies will also be available at Council's library and customer service counters in Mossman and Port Douglas.

Council finalised an independent revaluation of its land & land improvements, buildings & other structures, water assets, roads and footpaths. A review of Council's landfill provision was also undertaken, resulting in a reduction in the anticipated cost to remediate Council's landfill sites.

Community groups celebrate Seniors Week

Council and local not-for-profit organisations worked on Seniors Week, bringing a range of activities to our Shire's residents in August.

Council provided funds to Douglas Shire Community Services Association, Port Douglas Community Services Network Inc and Douglas Shire Seniors Inc to subsidise activities.

The activities also gave residents the opportunity to meet the staff and volunteers behind these local community organisations and find out more about their services.

This year some of the activities also provided the community with opportunities to provide input/innovative ideas into "Age-Friendly" communities. Community engagement results and survey results assisted Council staff develop funding applications for grant opportunities.

Staff Recognition Awards honour efforts

Council presented long-serving team members with Staff Recognition Awards in August.

20 years service - Darryl Crees, Michael Hollier, Michael Treweek.

15 years service - Clint Howarth, Sara Roberts.

10 years service - Sean Cooper, Peterjon Edwards, Bevan Crimmins, Ronald Graham, David Osborne, Michael Jones, Garry Mason, Jolene Kachel, Keegan Hunter.

Sewer main break cleaned up quickly

Council crews wasted no time in repairing a sewer main on Mitre St in Craiglie after a break.

202 of 214



AROUND THE TRAPS



Council was invited to attend Port Douglas State School's Science on the Oval. This initiative was part of National Science Week which had the theme "Future Earth". Council's Resource Management Officer and Sustainability Officer played recycling games with children aimed at teaching them what can and can't be recycled in the Douglas Shire.



A valve installation in Marrs Creek was completed by the Water Reticulation team as part of the capital works project to replace the mains in that locality.

Attachment 11 Wangetti Trail takes leap towards reality

The Wangetti Trail is several giant steps closer to becoming a reality.

Council has approved the [Wangetti Trail interim feasibility report](#) and agreed to join Cairns Regional Council in a project working group to get the Trail underway.

The Trail can be built in 24 months, depending on the construction model, at a cost of around \$21 million.

Both Douglas and Cairns Councils are seeking the funding to complete the detailed design and develop the management model for the Trail, which is expected to create 74 ongoing additional jobs in the region and attract nearly 30,000 walkers and cyclists each year.

Smoking ceremony marks start of Stage 2

A smoking ceremony by Kuku Yalanji Traditional Owner Caleb Hall marked the start of Stage 2 construction of the Flagstaff Hill Walking Trail in Port Douglas.

The track is being constructed by Cairns-based Eco Civil Solutions and local Indigenous company, Bulban Enterprises.

Training will be provided for 15 local Yalanji staff, ensuring they have stronger skills for future work opportunities.

Pizza & Pyjama Storytime a hit with families

Mossman Library hosted another successful Pizza & Pyjama Storytime event during August.

Dozens of children and their parents donned their PJs and enjoyed the family event.

203 of 214



*Click on image
to view the
Wangetti Trail
feasibility report*



AROUND THE TRAPS

Council and Plastic Free Douglas designed a fact sheet "How to keep your event eco-friendly" which is now available on Council's website and in brochure format.

Council issued 10,394 receipts and processed 14 building applications and 1924 customer requests in August.

"We would love to post A BIG THANK YOU to Douglas Shire Council... In late August I rang the Council to mention the terrible condition of the easement at the back of our property in Wonga Beach. This easement is a home to a variety of Bird life - that includes - Great Egrets, Spoonbills and Burdekin Ducks etc. We have always found them to be extremely helpful and have followed through and offered any relevant advice."

September

Mega concrete pour for Port Douglas reservoir

One of the largest concrete pours in the Douglas Shire since the construction of Sheraton Mirage put Port Douglas on the international tourism map in the 1980s has paved the way for the continued growth of the region.

The new 20-megalitre reservoir overlooking Port Douglas will ensure the community has enough of our most precious resource to accommodate future residential and tourism development and significantly improve the resilience of the Douglas Shire in the event of a natural disaster.

More than 30 construction workers representing Cairns-based principal contractor Koppens Developments and fellow Far North Queensland sub-contractor CivForm oversaw the historic pour of the concrete slab measuring 420 cubic metres.

Construction of the new \$13.5 million reservoir above Craiglie is on track for completion in January 2018.



Surf's up for successful beach businesses

Expressions of interest were sought for operators to conduct various commercial activities on Four Mile Beach.

The successful applicants for the hire of non-motorised beach recreation equipment, hire of beach equipment and sun protection products, kite surfing instruction and hire and mobile food and drink service have been given five-year tenures to conduct their commercial activity on the popular beach.

Only businesses with one of these permits are allowed to conduct commercial activities on the beach.



AROUND THE TRAPS



Council had a stall at World Cassowary Day held at Fogarty Park in Cairns to promote the Douglas Card. Officers collected 64 applications for the free off-season ferry pass, promoted bird-attracting native plants which were given to participants who could answer cassowary quiz questions, and spoke to visitors about the Douglas Shire's work in environmental sustainability.



The OBSU team completed a familiarisation tour of the Mossman and Port Douglas Cemeteries with Gary Aylett to improve the efficiency of processing cemetery enquiries.

Gardening guru delighted to 'Let It Grow'

Attachment 5.14.1

Council's inaugural "Let it Grow" Douglas Garden Awards attracted 17 entrants from Port Douglas to Wonga Beach across a wide range of categories.

Guest judge, ABC's *Gardening Australia* presenter Costa Georgiadis, was "beyond happy" judging the gardens over two days with Mayor Julia Leu and Open Spaces Coordinator Peter Logan.

Costa was impressed that each entrant displayed a passion and enthusiasm for their own unique garden and commended Council's Open Spaces team for their commitment and high standard of service to the community.

Successful events organised included a community "Meet With Costa" at QT Resort and the Garden Awards presentation at the Port Douglas Community Hall.

Gas chlorine upgrade for Whyanbeel plant

A large-scale project to upgrade the filtered water disinfection system at Whyanbeel from liquid chlorine to a gas chlorine plant was successfully completed.

The upgrade involved a major change to the control methodology for disinfecting drinking water and required the coordination and delivery of multiple trade services and expertise contractors.

Staff were trained in the safe use and operation of the new equipment.

The Whyanbeel water plant emergency power generator had to be relocated to allow for the provision of the gas chlorine plant.

This project was successfully undertaken and the emergency generator was moved to a new position with no impact to water plant operations.

205 of 214



AROUND THE TRAPS

Applicants were invited to apply for funding under the Community Support Program, Business Development Fund and Event Funding Program for projects commencing in the 2017-2018 financial year. An information session about the grant programs was attended by six people.

The final audit visit by the Queensland Audit Office for the 2016/17 financial year included a strong focus on asset-related matters, including capitalisation, asset valuations, remaining useful lives, depreciation and asset sustainability.

"We had a visit at our resort from Tony the day before the water restrictions. I would like to pass on that Tony was very helpful, he took the time to explain everything to us including some tips for making sure we stay compliant. It was nice to have someone from the Council helping us."

AROUND THE TRAPS



The Douglas Libraries team held a hugely successful Fun Palace at Mossman Library during September. The annual Fun Palace event encourages children to learn through the exploration of arts and science. Kids - and parents - had a ball with a range of fun-filled activities throughout the morning.



Party to celebrate Port Douglas Pump Track

The official launch of the Port Douglas Pump Track was held in September to acknowledge the \$100,000 funding from the Department of National Parks, Sport and Racing for its construction.

A fun-filled morning was appreciated by children from our community who displayed a high level of bike and scooter talents, with local businesses Port Douglas Bike Shop & Hire and Sports Power donating some great prizes.

Professional bike rider Josh Stead from Mossman and pro-scooter champions from the Cairns-based Scooter Shack also demonstrated their fearless skills and assisted in judging the competitions.

207 of 214



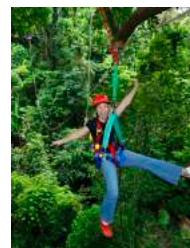
'Early bird' discount trial for Daintree Ferry

Council launched a trial "early bird" discount to encourage visitors to travel on the Daintree Ferry before 9am in time for the school holidays.

The Daintree Ferry has experienced record numbers of vehicles travelling on the ferry in the past 18 months which has prolonged waiting times for locals and visitors during peak periods.

Council has been working with local tourism operators north of the Daintree River to develop strategies to minimise delays while encouraging visitors to experience the beauty of the world's oldest rainforest and the early bird discount is the latest strategy.

Initiatives implemented such as the Douglas Card – which offers free travel on the ferry to residents of the Douglas Shire, Cairns Regional Council, Mareeba Shire, the Tablelands, Cassowary Coast, Cooktown and Wujal Wujal areas between 1 November and 28 February – has helped stimulate record visitor numbers for the region.



AROUND THE TRAPS



The Reef Guardian Schools Future Leaders' Eco Challenge was held at Four Mile Park in Port Douglas.

Representatives from local primary schools spent the day at the Great Barrier Reef Marine Park Authority event learning how STEM subjects could be used to improve environmental sustainability. Partners involved in assisting with the day included Low Isles Preservation Society, marine biologists from local tour operators and Council.

Council officers ran the "How Many Plastic Bags?" activity in which students were guided to use maths skills to analyse survey data about plastic bag use within their families and then taught to make their own 'no-sew' shopping bags from old t-shirts.

October

Council delivers on promise for Daintree toilets

Council is delivering on a promise to construct accessible toilet facilities on the northern side of the Daintree Ferry.

The \$170,000 joint project between Council and the State Government's Works for Queensland program will see the construction of an elevated amenities block with a wheelchair accessible unisex toilet and a second unisex toilet.

This project continues the transformation of the Daintree Gateway precinct since the new Douglas Shire Council was established in 2014 which includes a new interpretive signage, the carpark upgrade, enhanced gardens and new toilet facilities on the southern side of the Daintree Ferry as well as the amazing artwork on the ferry itself designed by local Yalanji artists.



Emergency procedures explained in video

An [educational video](#) was produced to communicate to the community the region's emergency procedures for a storm event such as cyclone and storm tide.

Subjects covered include the risks of cyclone and storm tide, preparing your property, emergency planning, evacuation zones and routes, best place to shelter, storm tide shelter location and what to bring and where to find more information.

Storm surge evacuation zone stickers were also printed and distributed to applicable properties.

The video will be released to the public on Council's website and Facebook page at the end of November.



Click on image to watch the emergency procedures video

AROUND THE TRAPS



During a large rainfall event a fallen tree damaged a water main in Mossman at Junction Bridge.

The pipework was under water, but the Water Reticulation team was able to locate the problem fast and close the valves off to ensure no further water was lost.

An alternate water supply was quickly commissioned to ensure properties continued to have water.

Council engaged a local contractor to upgrade the power supply into Wonga Beach Caravan Park as the current supply was operating above its safe load limit. Ergon install a new underground supply and Council put in a new meter box and upgraded distribution.

Major prawn farm expansion fast-tracked

A major expansion of the existing aquaculture facility at Killaloe was approved by Council in May 2016.

While Gold Coast Marine Aquaculture always intended to expand operations at Killaloe, the outbreak of white spot disease which devastated the prawn industry in south-east Queensland was the catalyst to commence works on the expansion in October 2017.

The first two stages of the expansion which will see the construction of 16 ponds which are anticipated to be completed and stocked by mid-2018.



Safety increased for frontline Council officers

With a focus on increasing the safety of frontline officers, Local Laws were issued with a new uniform.

The new uniform will be coupled with other accessories such as body cams, bite sticks and two-way radio communications to provide a greater level of safety and compliance.



Shade sails upgraded throughout Shire

Open Spaces engaged local contractors to upgrade shade sail structures throughout the Douglas Shire to ensure compliance with playground regulations.

The structures must be engineer-certified and a minimum of two metres above the highest point of the play unit to prevent children climbing onto the structures.



Mossman water disinfection system boost

A large-scale project to upgrade the filtered water disinfection system at Mossman from liquid chlorine to a gas chlorine plant was successfully completed.



Ordinary Council Meeting - 12 December 2017

AROUND THE TRAPS

The Mayor's Christmas Appeal was launched in October 24. Families with children aged 15 years and under and holding a Federal Government benefit card were eligible to apply for a food hamper.

Nominations opened in October for the Douglas Shire Council Australia Day Awards. Categories include Citizen of the Year, Young Citizen of the Year, Volunteer of the Year, Arts and Cultural Award, Environmental Achievement Award, Senior Sportsman Award and Junior Sportsman Award.

The end-of-financial-year-process and audit for the 2016/17 financial year were completed within the required statutory timeframes. Council achieved an unmodified (unqualified) audit from the Queensland Audit Office and also achieved an 83 per cent reduction in the number of outstanding audit issues raised by the QAO. The Community Financial Report was also finalised for inclusion in Council's Annual Report.

November

Domestic violence display highlights crisis

A striking display of 52 silhouettes of women was displayed in front of the Magistrates Court House in Front Street, Mossman, on 10-11 November.

The exhibition was to raise awareness of the confronting statistic that, on average, 52 women are killed in domestic violence situations each year in Australia. The Douglas Shire has one of Queensland's highest rates of reported domestic and family violence.

The display as part of a regional tour has been coordinated by the local White Ribbon Committee of which Council is closely involved and was held in the lead up to the White Ribbon Walk in Mossman.



Transfer station upgrades maximise recovery

Upgrades to Killaloe and Cow Bay Transfer Stations under Council's Capital Works program and Works for Queensland funding were completed in November. New entry signs at all sites have also been installed.

Killaloe has a new drop-off area providing a one-stop drop-off area for most waste types with directional signage to assist customers and maximise recovery in accordance with Council's [Waste Reduction and Recycling Plan](#).



Click on image to learn more about Council's Waste Reduction & Recycling Plan

Council adopts new Planning Scheme

After extensive community consultation, Council resolved to adopt the new Douglas Shire Council Planning Scheme 2018 which will come into effect on 2 January 2018.

AROUND THE TRAPS



The 2017 cyclone season preparation campaign kicked off with community education stalls at the Mossman and Port Douglas markets. Council partnered with Queensland Fire and Emergency Services to talk with people about how to prepare their houses and families for potential emergency events. Both stalls were well received with feedback such as "Was good to come across information stand at Mossman market on my second day in the area" and "Thanks for the pop-up market stall".

Local Laws Officers launched a campaign targeting dogs being walked off leads or wandering in the community. The campaign aims to educate dog owners on their responsibilities and is a reminder of the potential consequences should their dog be involved in an incident.

Council digs in for National Recycling Week

Attachment 51141

211 of 214

Council celebrated National Recycling Week by releasing the series of educational [YouTube videos](#) starring local seven-year-old Max Dowling.

The videos received an overwhelming response from the community and were picked up by Channel 7, Channel 9, ABC Radio and the *Cairns Post*. The videos were also advertised in the *Port Douglas & Gazette* and Miallo State School newsletter.

Council's foyer also featured an interactive display of items which can be recycled or recovered in Douglas Shire and the Scrap Shack re-opened at Killaloe Transfer Station during National Recycling Week in its new location with more space.

Click on
images to
see Max's
recycling tips



Spectacular Flagstaff Hill Walking Trail finished

Stage 2 of the Flagstaff Hill Walking Track was completed in November at a cost of just under \$600,000.

Cairns contractor Eco Civil Solutions partnered with local indigenous company Bulban Enterprises to complete the 1.5km sealed and unsealed walking trail.

The trail features breathtaking views and is destined to become one of the Shire's most popular attractions for locals and visitors.

It follows the contours of Flagstaff Hill and includes lookouts to Double Island, Four Mile Beach, Low Isles, Snapper Island and the Daintree Rainforest.

The trail now links Four Mile Beach with the waterfront and marina.

The State Government contributed \$550,000 to the Flagstaff Hill Walking Trail under its Works 4 Queensland program.



AROUND THE TRAPS

A revision of Council's 2017/18 budget was commenced to incorporate carry-forward uncompleted capital works items, new capital works items and revised figures for existing capital works items.

Council offered residents free green waste disposal to clean up their back yards in November.

"Thanks to the Darryl, Rob and the concrete crew who recently constructed a slew drain at our property, the wet season will now be far more bearable without the stinking stagnant toad pole-infested water laying for weeks in the easement. Rob and the crew were very friendly and professional, doing a great job which included doing a great job or tidying up at the end of the job.."

AROUND THE TRAPS



Biological impact monitoring conducted in Mossman River to monitor water quality



Water flow and levels were monitored at the intakes during water restrictions. New water level gauge was installed.



The 99th Remembrance Day service was hosted by Council with over 60 people in attendance



River bank stabilisation conducted near Mossman wastewater treatment plant

December



Volunteers bring Christmas cheer to needy families

Local church volunteers and Goobidi assisted in the packing and delivering of hampers on December 14 to families in need across the Shire. Thank you to the community for your generous donations, and the volunteers for your time; helping bring a little extra joy at this time of the year.

Carols in the Park add Christmas spark

The community was invited to be part of Christmas Carols in the Park at the Mossman Showgrounds on 9 December.

The event celebrated the festive season with free entry, concert, food stalls and an inflatable slide. The carols were presented by Douglas Theatre Arts Group, showcasing an array of local performers.

Local stall holders were invited to nominate a stall in keeping with this festive community event. While no fees were charged to hold a stall, donations to the Mayor's Christmas Appeal were greatly appreciated as proceeds went towards buying grocery hampers for local families in need.



Ordinary Council Meeting - 12 December 2017

AROUND THE TRAPS



Council's Frontline and OBSU teams wish the thousands of customers they have assisted throughout the year a Merry Christmas and look forward to helping you in the New Year.

The point of sale (POS) equipment at the Daintree ferry was refreshed with casher systems implemented to complement a new ticketing system that will be installed in the new year.

The budget review was presented to Council for adoption.

Work commenced on the independent revaluation process for non-current asset classes requiring revaluation during the 2017/18 financial year.

Throughout the year all finance related statutory timeframes were met, including the provision of monthly financial reports to Council, issuing of rates and water usage notices and lodgement of any financial returns.