

Andropogon gayanus (Gamba grass)

Description A robust, upright perennial grass that grows to 4m with distinctive plumed seed heads. Gamba grass forms thick and strong tussocks that remain upright even when fully cured in the dry season.

Distribution Gamba grass is currently restricted to isolated occurrences in the Finlayvale, Santacatterina and Killaloe area.

Impacts Gamba grass was planted as tropical pasture but has escaped from intensively managed grazing systems. It outcompetes native pastures and fuels intense fires. Late season gamba grass fires are very difficult to manage and pose a significant threat to life and property.

Key projects: A monitoring and control program is in place on to eradicate gamba grass from all known sites within the Douglas Shire.

Biosecurity obligations and legal requirements

Obligations relating to restricted matter

Under the Act gamba grass must not be given away, sold, or released into the environment. Penalties apply.

Under the Regulation gamba grass may be disposed of by:

- Deep burial,
- Transporting to a waste facility securely (contact DSC 07 4099 9444),
- Sealing the matter in plastic and leaving the matter in the sun until any vegetative material being disposed has decomposed.

General Biosecurity Obligation

The Act requires everyone to take all reasonable and practical measures to minimise the biosecurity risks associated with gamba grass under their control.

Contact DSC to report any suspect plants on 07 4099 9444.

In the prevention zone

Wherever practical ensure agricultural and raw materials are sourced from a reliable supplier and are from a gamba free area.

If introducing new stock spell in a holding paddock for at least 7 days before releasing into property.

Contact DSC to report any suspect plants on 07 4099 9444.

You are required to control all identified gamba grass plants on your property.

Do not disturb or remove soil and plant material from a known infestation location, even if no plants are visible.

You are responsible for ensuring machinery and vehicles avoid known infestation areas or undertake appropriate wash down prior to leaving site.

Do not sell, cart, introduce or transport contaminated hay, silage or livestock.

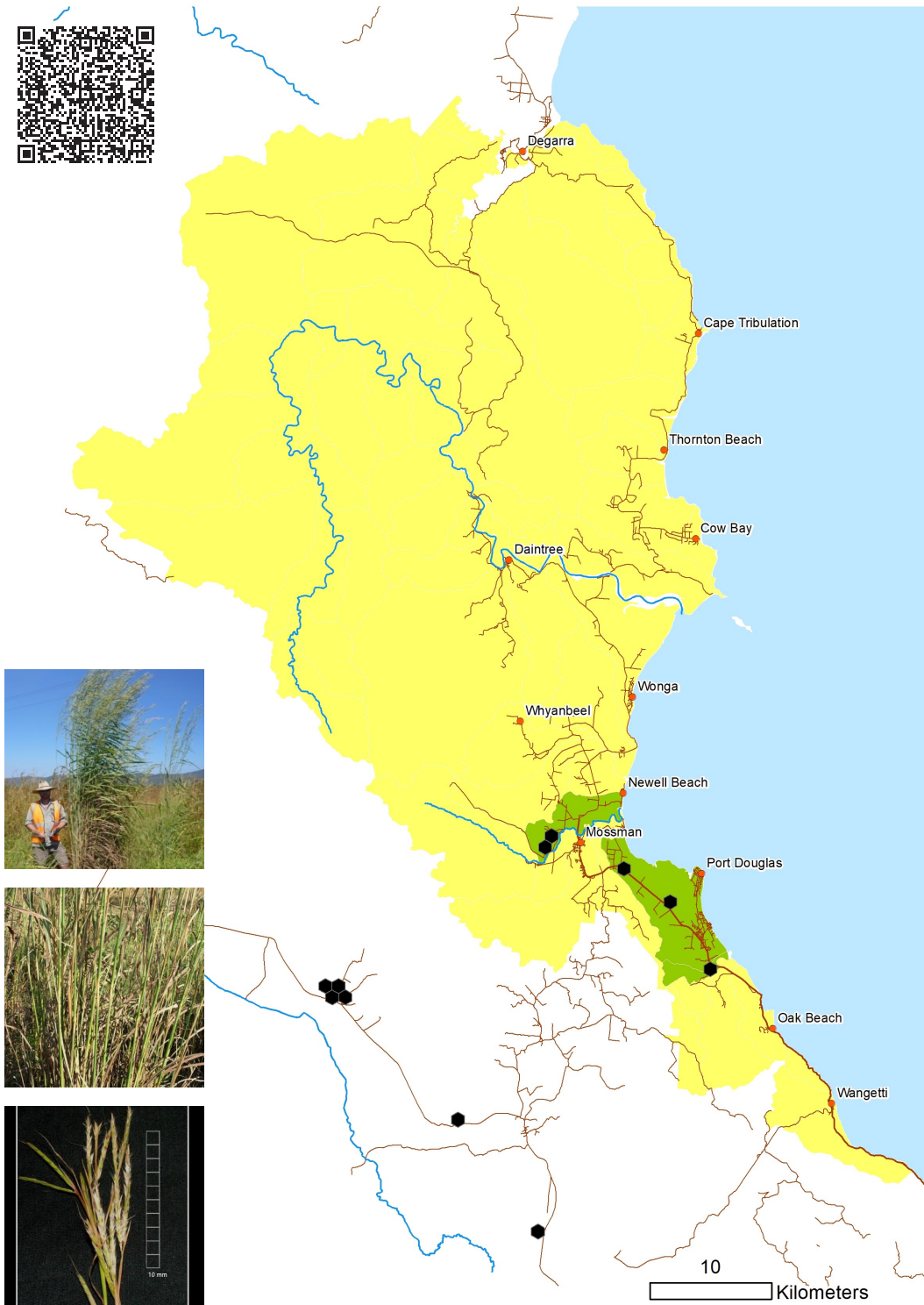
If introducing new stock spell in a holding paddock for at least 7 days before releasing into property.

For more information on using this biosecurity action plan fact sheet, and further information on control tools, refer to the Douglas Shire Biosecurity Management Plan available at douglas.qld.gov.au and customer service centres.



Andropogon gayanus (Gamba grass)

Management objectives and actions



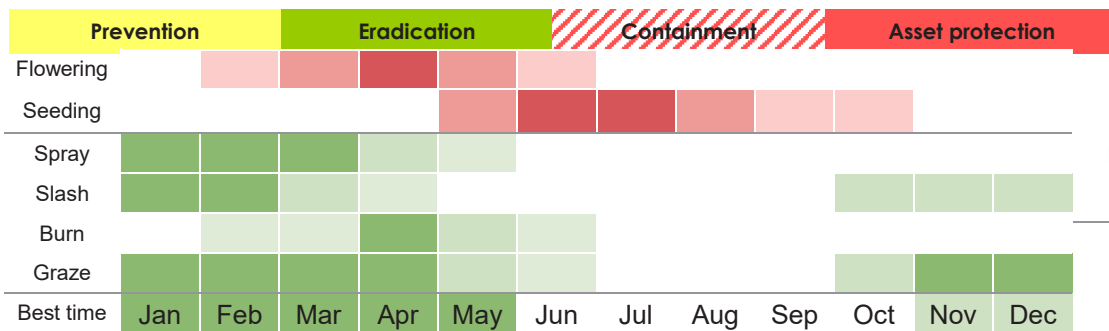
Biosecurity Act
Restricted matter
category

3
Do not distribute

Control



Spread



Key

- Peak ●
- First/last flush ●
- Occasional ●
- Optimal ●
- Good ●
- Marginal ●