

Annona glabra (Pond Apple)

Description: Pond apple is a tall semi-deciduous shrub or tree reaching around 15m but usually 3-6 m. Pond apple is most likely to occur in wetlands and along waterways, but it may occur along beaches as well. Leaves are lighter below than above and have a green apple scent when crushed. The Large fruit is similar to a custard apple and are filled with floating seeds similar in size and shape to a pumpkin seed.

Distribution: Core infestations occur in the Daintree River and Baileys Creek areas. Outlier infestations occur in the Mossman River, Port Douglas and have been detected as far north as Cowie Beach. Seeds can float on river and ocean currents.

Impacts: Pond apple is a highly invasive tree/shrub that can colonise and take over a wide range of wetland habitats. It forms dense thickets that exclude most native ground and shrub layer plants and prevents regeneration of trees.

Key projects: The upper Daintree River and Mossman River are the target of top-down management to remove upstream sources above tidal areas. Occasional plants occur in the Port Douglas and Four Mile Beach and are removed when detected.

Biosecurity obligations and legal requirements

Obligations relating to restricted matter

Under the Act pond apple must not be given away, sold, or released into the environment. Penalties apply.

Under the Regulation pond apple may be disposed of by:

- Deep burial,
- Transporting to a waste facility securely (contact DSC 40999444),
- Sealing the matter in plastic and leaving the matter in the sun until any vegetative material being disposed has decomposed.

General Biosecurity Obligation

The Act requires everyone to take all reasonable and practical measures to minimise the biosecurity risks associated with pond apple under their control.

In the prevention zone

Contact DSC to report any suspect plants on 07 4099 9444.

In the eradication zone

Contact DSC to report any suspect plants on 07 4099 9444.

Landowner's or occupiers can assist DSC by maintaining easy access to infestations and by assisting with control activities.

You are required to control all identified pond apple plants on your property where practical to do so.

In the asset protection zone

Landowner's or occupiers can assist DSC by maintaining easy access to infestations and by assisting with control activities.

Manage risk of spread from your property and protect priority assets using best practice methods to control infestations where practical to do so.

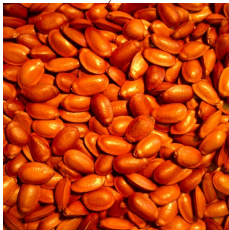
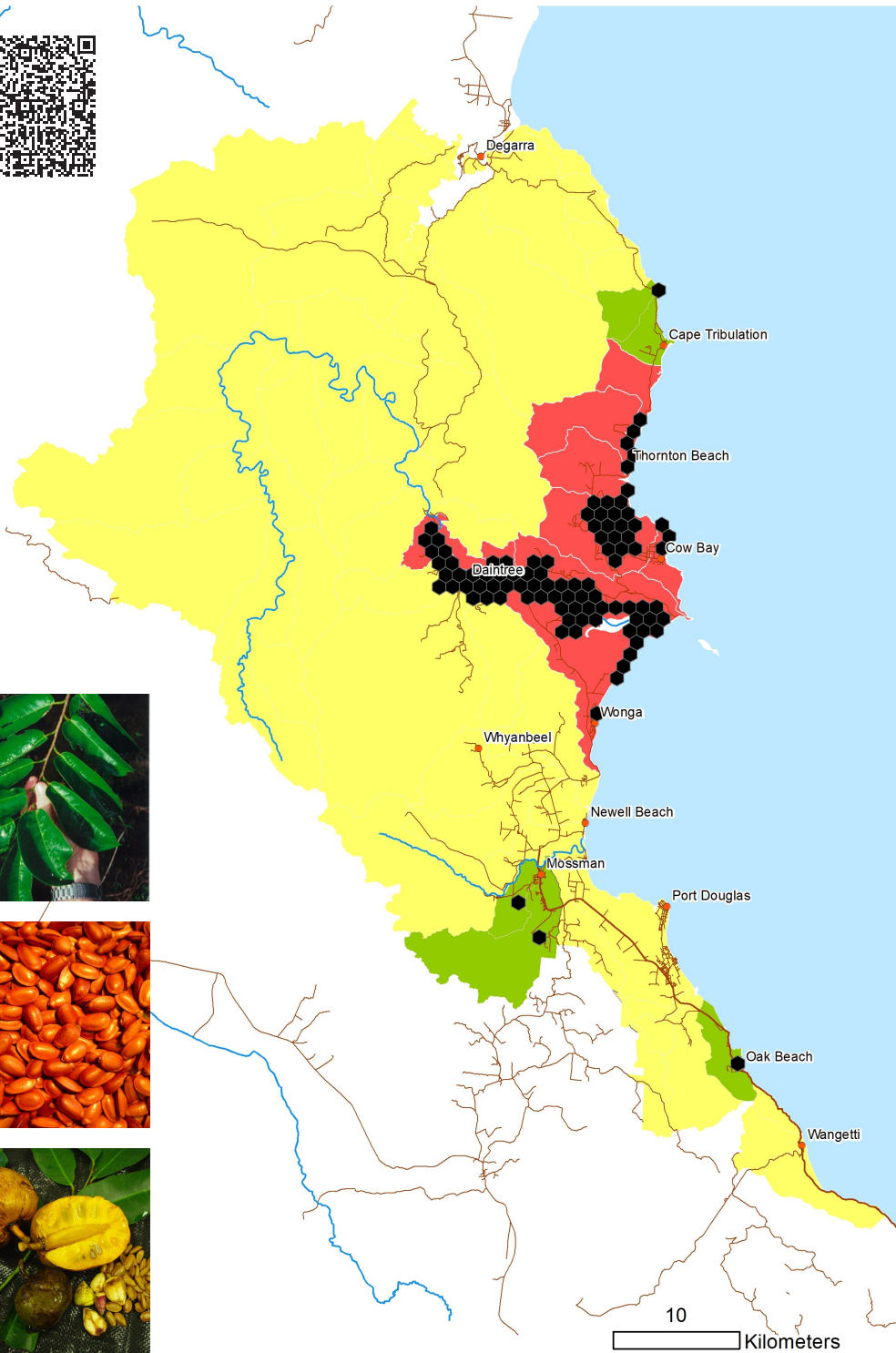
You are responsible to ensure materials or products leaving your property are free from pond apple seed or plant material.

For more information on using this biosecurity action plan fact sheet, and further information on control tools, refer to the Douglas Shire Biosecurity Management Plan available at douglas.qld.gov.au and customer service centres.



Annona glabra (Pond Apple)

Management objectives and actions



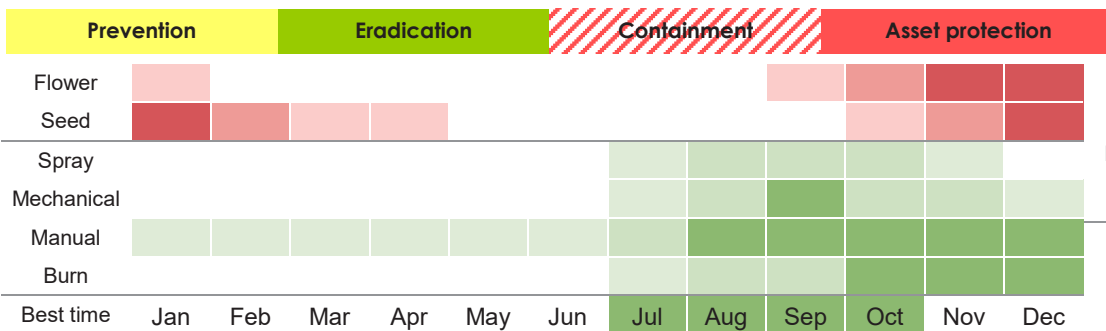
Biosecurity Act
Restricted matter category

3
Do not distribute

Control



Spread



- Key**
- Peak ●
 - First/last flush ●
 - Occasional ●
 - Optimal ●
 - Good ●
 - Marginal ●