

Hiptage benghalensis (Hiptage)

Description: A perennial vine growing to the canopy often more than 15m tall. One to three seeds are contained in a helicopter like ('samara') which has 3 papery wings 2-5cm long that float on wind. Flowers are scented and cream coloured generally forming outside of the wet season.

Distribution: Only known to occur in the Mossman River catchment within Far North Queensland. The core infestation is located on Butchers Hill in Tara Hills. Outlier infestations occur in the Mossman Gorge and South Mossman River areas.

Impacts: Hiptage forms dense vine towers which smother native vegetation along banks of creeks and rivers. It invades rainforests and seasonally dry, lowland closed forests. Hiptage poses a significant threat to Mossman Gorge and the Wet Tropics World Heritage Area.

Key projects: Target of a coordinated eradication program across all known sites. Bi-annual surveys are conducted to monitor all known infestations to ensure no new outbreaks have gone undetected. Aerial surveys are conducted annually to detect flowering plants in the rainforest canopy. Each site is then visited on foot to treat, and the proximity of detected plants is then surveyed for additional plants.

Biosecurity obligations and legal requirements

Obligations relating to local laws

Hiptage is a locally declared plant under Douglas Shire Council Local Laws. It is an offence under Local Law to distribute or propagate. Penalties apply .

General Biosecurity Obligation

The Act requires everyone to take all reasonable and practical measures to minimise the biosecurity risks associated with hiptage under their control.

In the prevention zone

Contact DSC to report any suspect plants on 07 4099 9444.

In the eradication zone

Contact DSC to report any suspect plants on 07 4099 9444.

Landowner's or occupiers can assist DSC by maintaining easy access to infestations and by assisting with control activities.

Manage risk of spread from your property and protect priority assets using best practice methods to control infestations.

Or You are required to control all identified pond apple plants on your property where practical to do so.

You are responsible to ensure materials or products leaving your property are free from Hiptage seed or plant material.

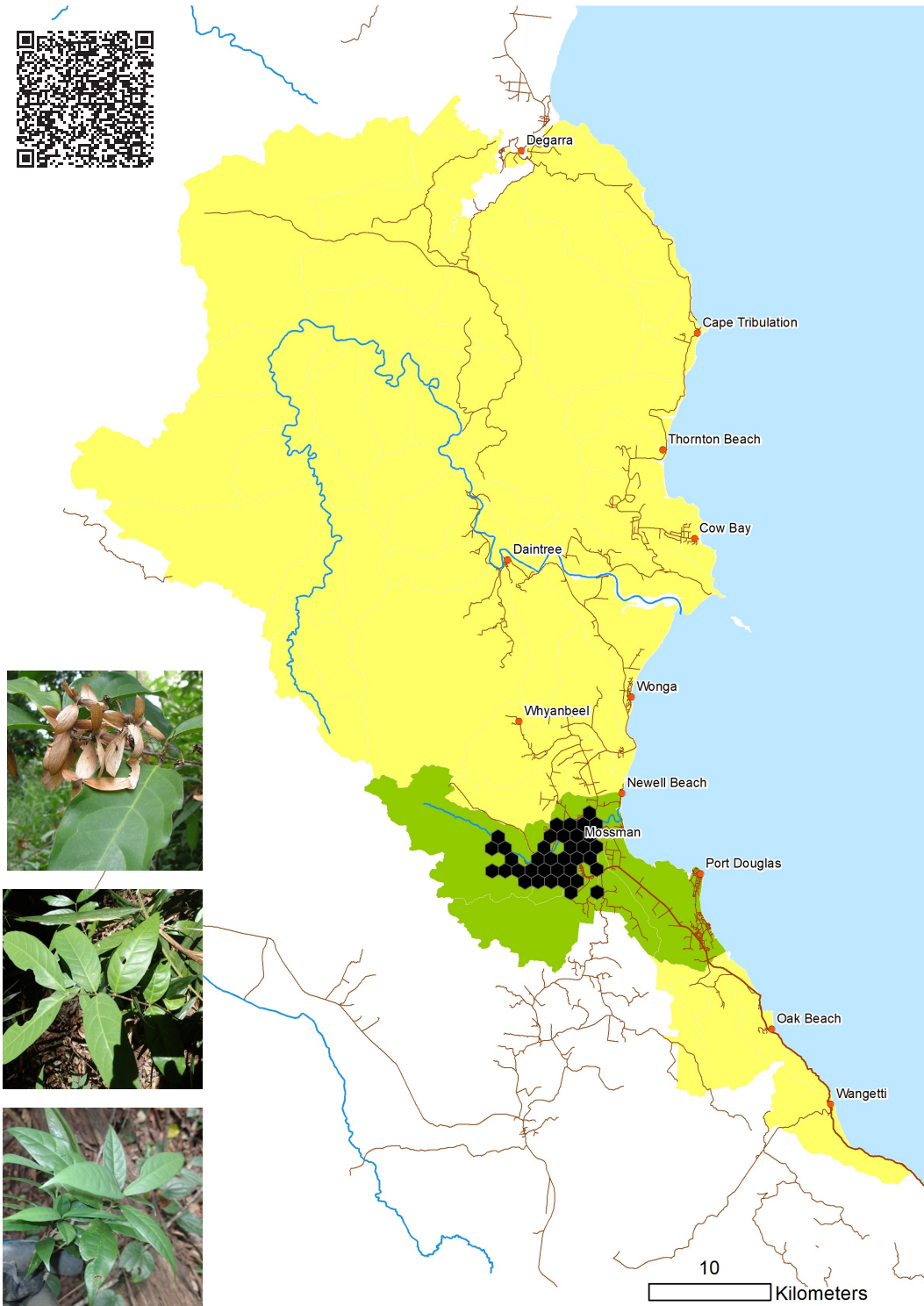
You are responsible for ensuring machinery and vehicles avoid known infestation areas or undertake appropriate wash down prior to leaving site.

For more information on using this biosecurity action plan fact sheet, and further information on control tools, refer to the Douglas Shire Biosecurity Management Plan available at douglas.qld.gov.au and customer service centres.



Hiptage benghalensis (Hiptage)

Management objectives and actions



Local laws apply

Must not propagate

Must not sell or supply

Control



Spread



Flowering												
Seeding												
Spray												
Cut												
Hand pull												
Best time	Jan	Feb	Mar	Apr	May	Jun	Jul	Aug	Sep	Oct	Nov	Dec

Key

- Peak ●
- First/last flush ●
- Occasional ●
- Optimal ●
- Good ●
- Marginal ●