

Zoning Map Sheet - ZM-012



Planning Scheme Zone Map

- Zones:**
- Low Density Residential
 - Low-medium Density Residential
 - Medium Density Residential
 - Tourist Accommodation
 - Centre
 - Recreation and Open Space
 - Environmental Management
 - Conservation
 - Industry
 - Tourism
 - Community Facilities
 - Rural
 - Rural Residential
 - Special Purpose

- Other Map Layers:**
- 1:15,000 Map Extents
 - Local Government Boundaries
 - Property Boundaries
 - Ocean

Based on or contains data provided by Douglas Shire Council and the State of Queensland. In consideration of these agencies permitting use of this data you acknowledge and agree that these agencies give no warranty in relation to the data (including accuracy, reliability, completeness, currency or suitability) and accept no liability (including without limitation, liability in negligence) for any loss, damage or costs (including consequential damage) relating to any use of the data. Data must not be used for direct marketing or be used in breach of the privacy laws.

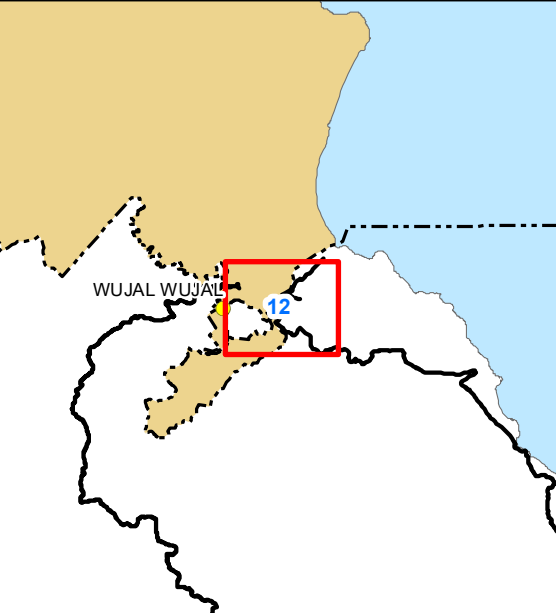
© Douglas Shire Council Planning Scheme Mapping 2018 Ver 1.0
 © State of Queensland and its Agencies 2017.

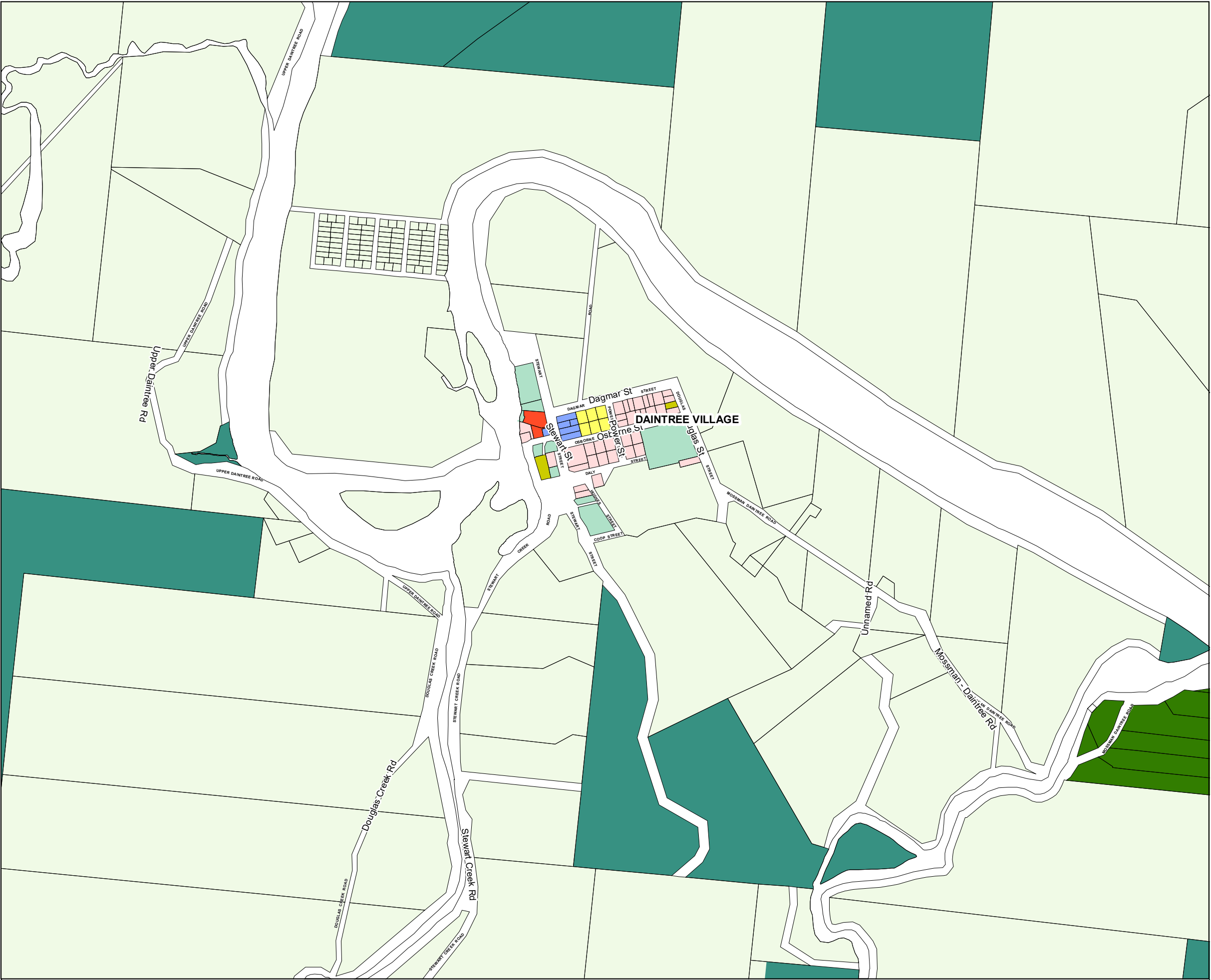
Produced by: Mangoesmapping Pty Ltd on 31/10/2017
 hello@mangoesmapping.com.au

Projection: MGA94 Zone 55
 Approx. Scale @ A3 1:15,000

0 0.2 0.4 0.6 Kms

Map Sheets:





Zoning Map Sheet - ZM-013



Planning Scheme Zone Map

- Zones:**
- | | |
|--------------------------------|--------------------------|
| Low Density Residential | Environmental Management |
| Low-medium Density Residential | Conservation |
| Medium Density Residential | Industry |
| Tourist Accommodation | Tourism |
| Centre | Community Facilities |
| Recreation and Open Space | Rural |
| | Rural Residential |
| | Special Purpose |

- Other Map Layers:**
- | | |
|-----------------------------|---------------------|
| 1:15,000 Map Extents | Property Boundaries |
| Local Government Boundaries | Ocean |

Based on or contains data provided by Douglas Shire Council and the State of Queensland. In consideration of these agencies permitting use of this data you acknowledge and agree that these agencies give no warranty in relation to the data (including accuracy, reliability, completeness, currency or suitability) and accept no liability (including without limitation, liability in negligence) for any loss, damage or costs (including consequential damage) relating to any use of the data. Data must not be used for direct marketing or be used in breach of the privacy laws.

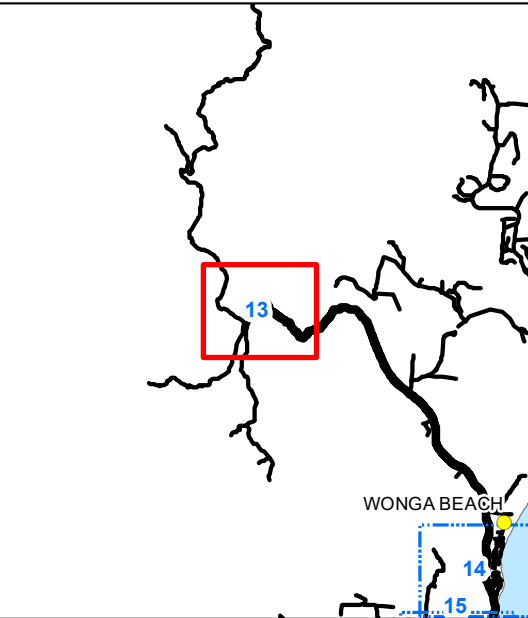
© Douglas Shire Council Planning Scheme Mapping 2018 Ver 1.0
© State of Queensland and its Agencies 2017.

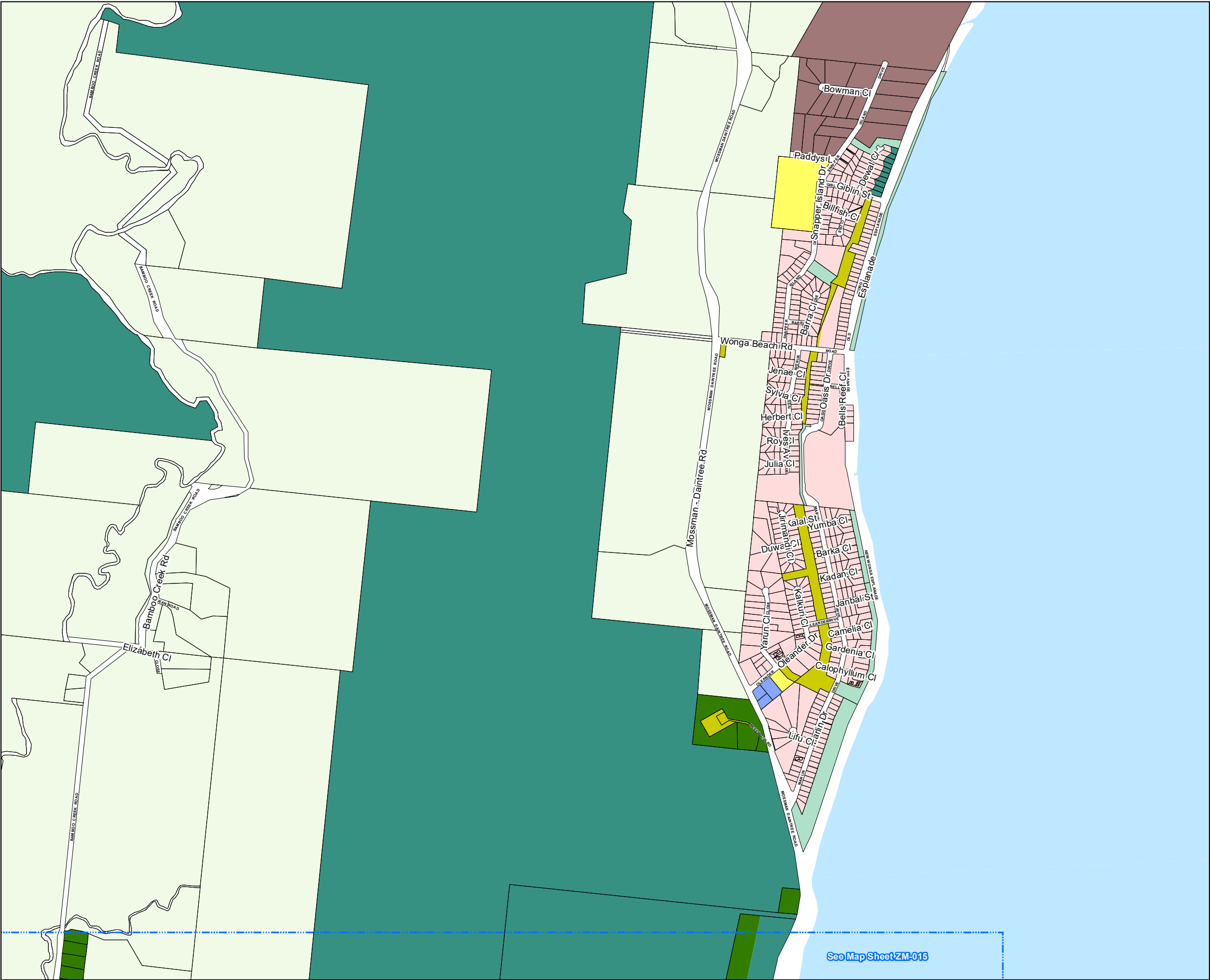
Produced by: Mangoesmapping Pty Ltd on 31/10/2017
hello@mangoesmapping.com.au

Projection: MGA94 Zone 55
Approx. Scale @ A3 1:15,000

0 0.2 0.4 0.6 Kms

Map Sheets:





Zoning Map Sheet - ZM-014



Planning Scheme Zone Map

- Zones:**
- | | |
|--------------------------------|--------------------------|
| Low Density Residential | Environmental Management |
| Low-medium Density Residential | Conservation |
| Medium Density Residential | Industry |
| Tourist Accommodation | Tourism |
| Centre | Community Facilities |
| Recreation and Open Space | Rural |
| | Rural Residential |
| | Special Purpose |

- Other Map Layers:**
- | | |
|-----------------------------|---------------------|
| 1:15,000 Map Extents | Property Boundaries |
| Local Government Boundaries | Ocean |

Based on or contains data provided by Douglas Shire Council and the State of Queensland. In consideration of these agencies permitting use of this data you acknowledge and agree that these agencies give no warranty in relation to the data (including accuracy, reliability, completeness, currency or suitability) and accept no liability (including without limitation, liability in negligence) for any loss, damage or costs (including consequential damage) relating to any use of the data. Data must not be used for direct marketing or be used in breach of the privacy laws.

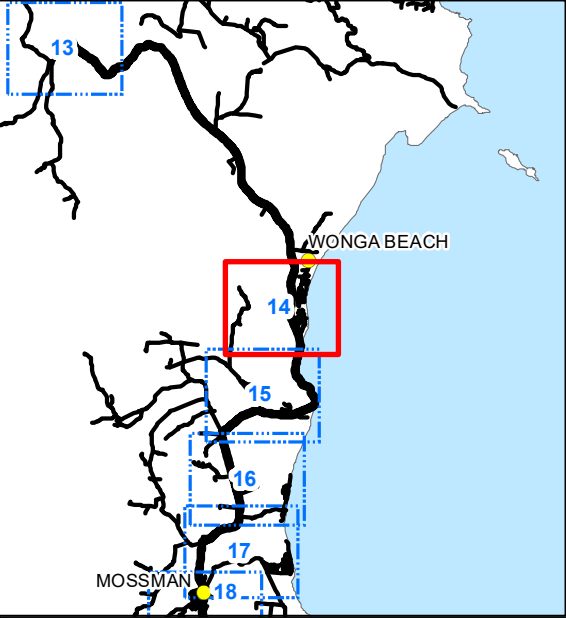
© Douglas Shire Council Planning Scheme Mapping 2018 Ver 1.0
© State of Queensland and its Agencies 2017.

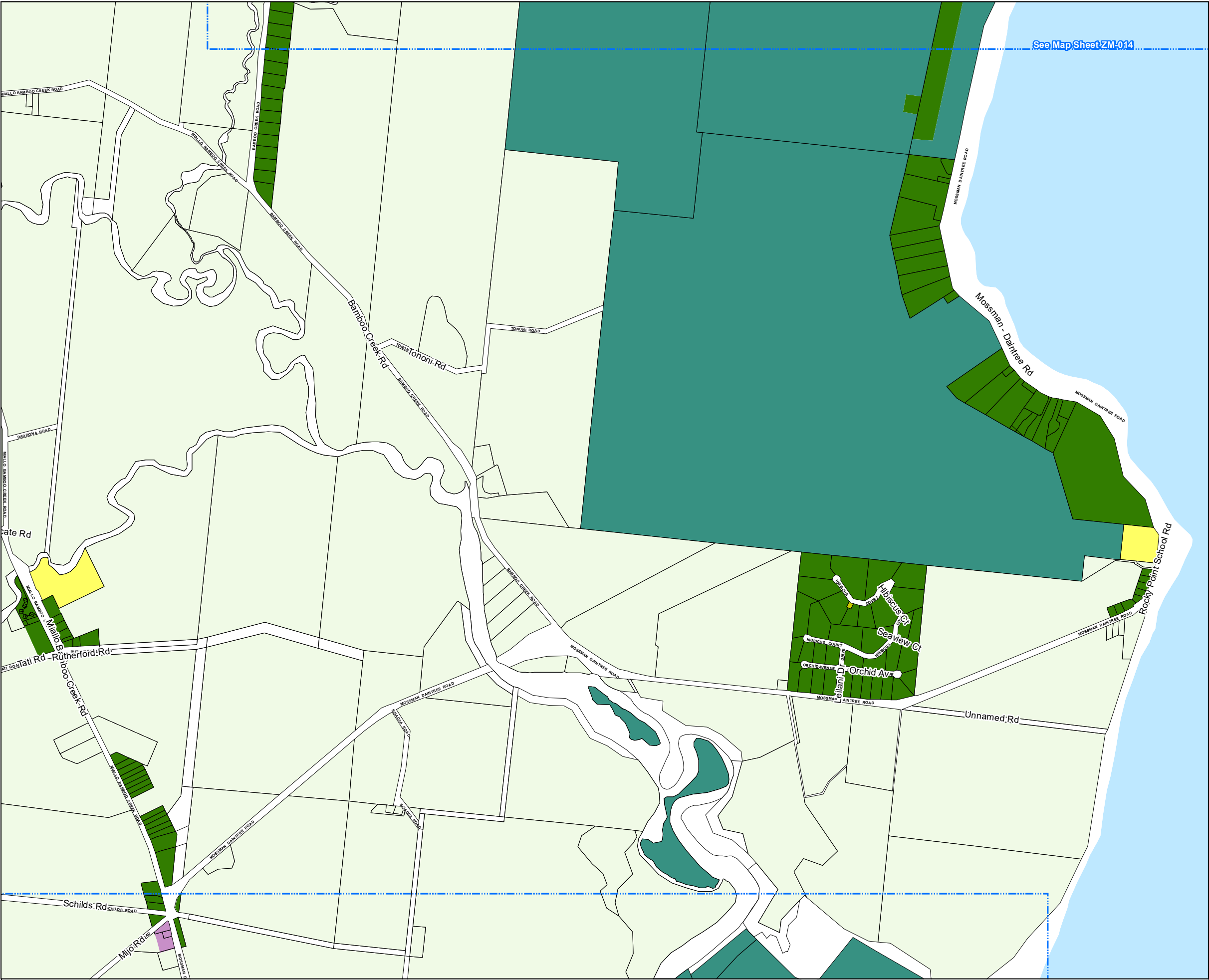
Produced by: Mangoesmapping Pty Ltd on 31/10/2017
hello@mangoesmapping.com.au

Projection: MGA94 Zone 55
Approx. Scale @ A3 1:15,000

0 0.2 0.4 0.6 Kms

Map Sheets:





Zoning Map Sheet - ZM-015



Planning Scheme Zone Map

- Zones:**
- | | |
|--------------------------------|--------------------------|
| Low Density Residential | Environmental Management |
| Low-medium Density Residential | Conservation |
| Medium Density Residential | Industry |
| Tourist Accommodation | Tourism |
| Centre | Community Facilities |
| Recreation and Open Space | Rural |
| | Rural Residential |
| | Special Purpose |

- Other Map Layers:**
- | | |
|-----------------------------|---------------------|
| 1:15,000 Map Extents | Property Boundaries |
| Local Government Boundaries | Ocean |

Based on or contains data provided by Douglas Shire Council and the State of Queensland. In consideration of these agencies permitting use of this data you acknowledge and agree that these agencies give no warranty in relation to the data (including accuracy, reliability, completeness, currency or suitability) and accept no liability (including without limitation, liability in negligence) for any loss, damage or costs (including consequential damage) relating to any use of the data. Data must not be used for direct marketing or be used in breach of the privacy laws.

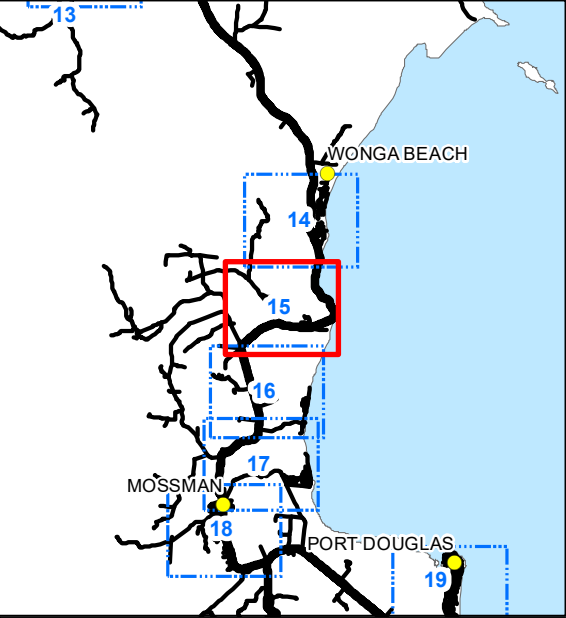
© Douglas Shire Council Planning Scheme Mapping 2018 Ver 1.0
© State of Queensland and its Agencies 2017.

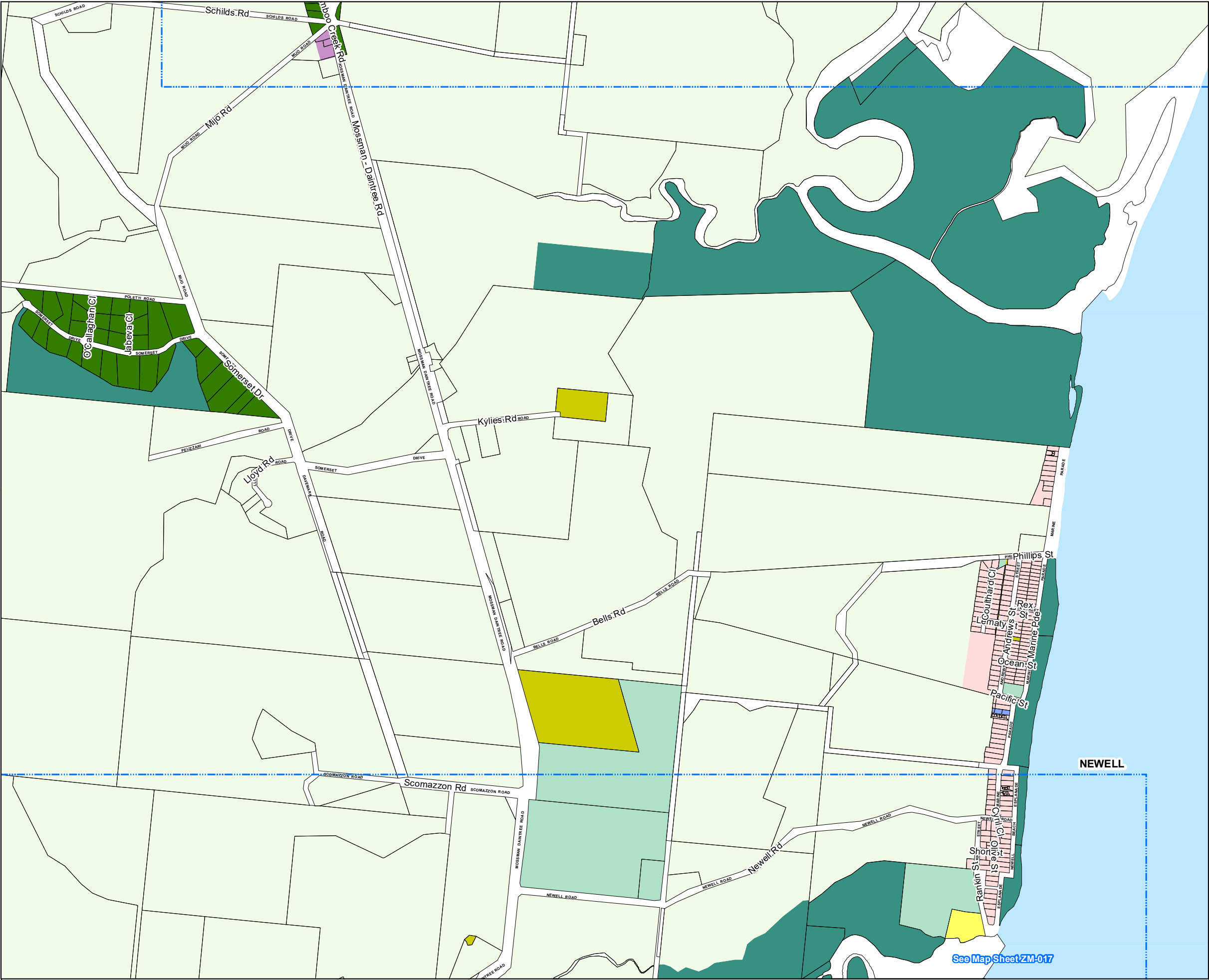
Produced by: Mangoesmapping Pty Ltd on 31/10/2017
hello@mangoesmapping.com.au

Projection: MGA94 Zone 55
Approx. Scale @ A3 1:15,000

0 0.2 0.4 0.6 Kms

Map Sheets:





Planning Scheme Zone Map

- Zones:**
- | | |
|--------------------------------|--------------------------|
| Low Density Residential | Environmental Management |
| Low-medium Density Residential | Conservation |
| Medium Density Residential | Industry |
| Tourist Accommodation | Tourism |
| Centre | Community Facilities |
| Recreation and Open Space | Rural |
| | Rural Residential |
| | Special Purpose |

- Other Map Layers:**
- | | |
|-----------------------------|---------------------|
| 1:15,000 Map Extents | Property Boundaries |
| Local Government Boundaries | Ocean |

Based on or contains data provided by Douglas Shire Council and the State of Queensland. In consideration of these agencies permitting use of this data you acknowledge and agree that these agencies give no warranty in relation to the data (including accuracy, reliability, completeness, currency or suitability) and accept no liability (including without limitation, liability in negligence) for any loss, damage or costs (including consequential damage) relating to any use of the data. Data must not be used for direct marketing or be used in breach of the privacy laws.

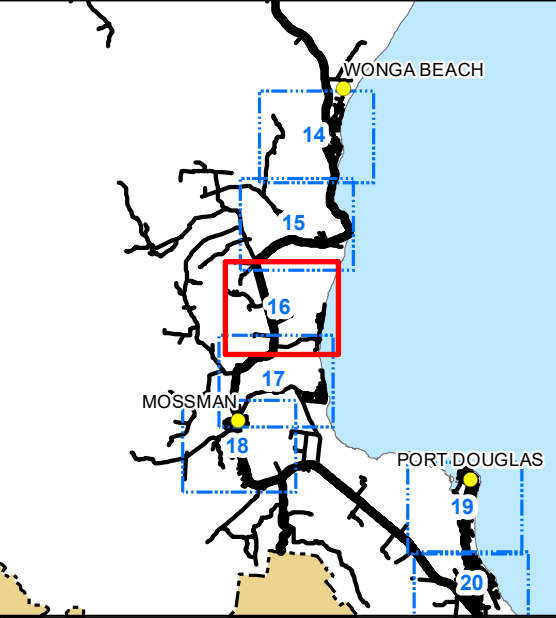
© Douglas Shire Council Planning Scheme Mapping 2018 Ver 1.0
© State of Queensland and its Agencies 2017.

Produced by: Mangoesmapping Pty Ltd on 31/10/2017
hello@mangoesmapping.com.au

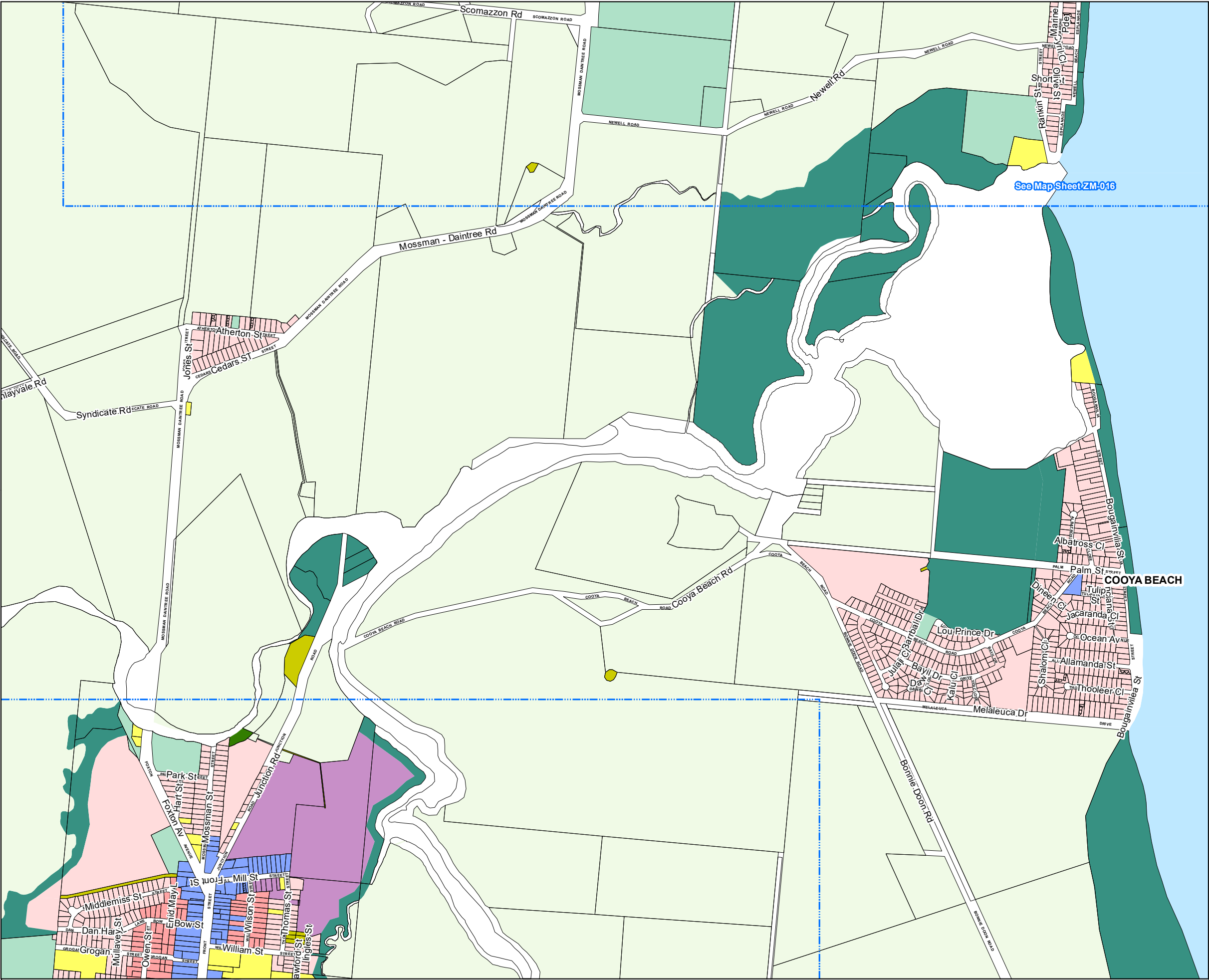
Projection: MGA94 Zone 55
Approx. Scale @ A3 1:15,000

0 0.2 0.4 0.6 Kms

Map Sheets:



Zoning Map Sheet - ZM-016



Zoning Map Sheet - ZM-017



Planning Scheme Zone Map

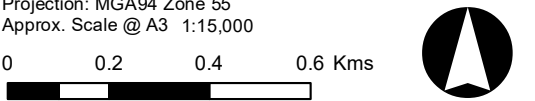
- Zones:**
- | | |
|--------------------------------|--------------------------|
| Low Density Residential | Environmental Management |
| Low-medium Density Residential | Conservation |
| Medium Density Residential | Industry |
| Tourist Accommodation | Tourism |
| Centre | Community Facilities |
| Recreation and Open Space | Rural |
| | Rural Residential |
| | Special Purpose |

- Other Map Layers:**
- | | |
|-----------------------------|---------------------|
| 1:15,000 Map Extents | Property Boundaries |
| Local Government Boundaries | Ocean |

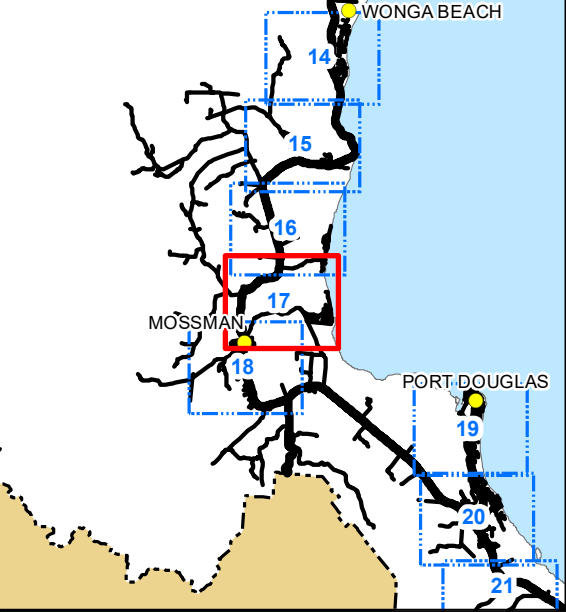
Based on or contains data provided by Douglas Shire Council and the State of Queensland. In consideration of these agencies permitting use of this data you acknowledge and agree that these agencies give no warranty in relation to the data (including accuracy, reliability, completeness, currency or suitability) and accept no liability (including without limitation, liability in negligence) for any loss, damage or costs (including consequential damage) relating to any use of the data. Data must not be used for direct marketing or be used in breach of the privacy laws.

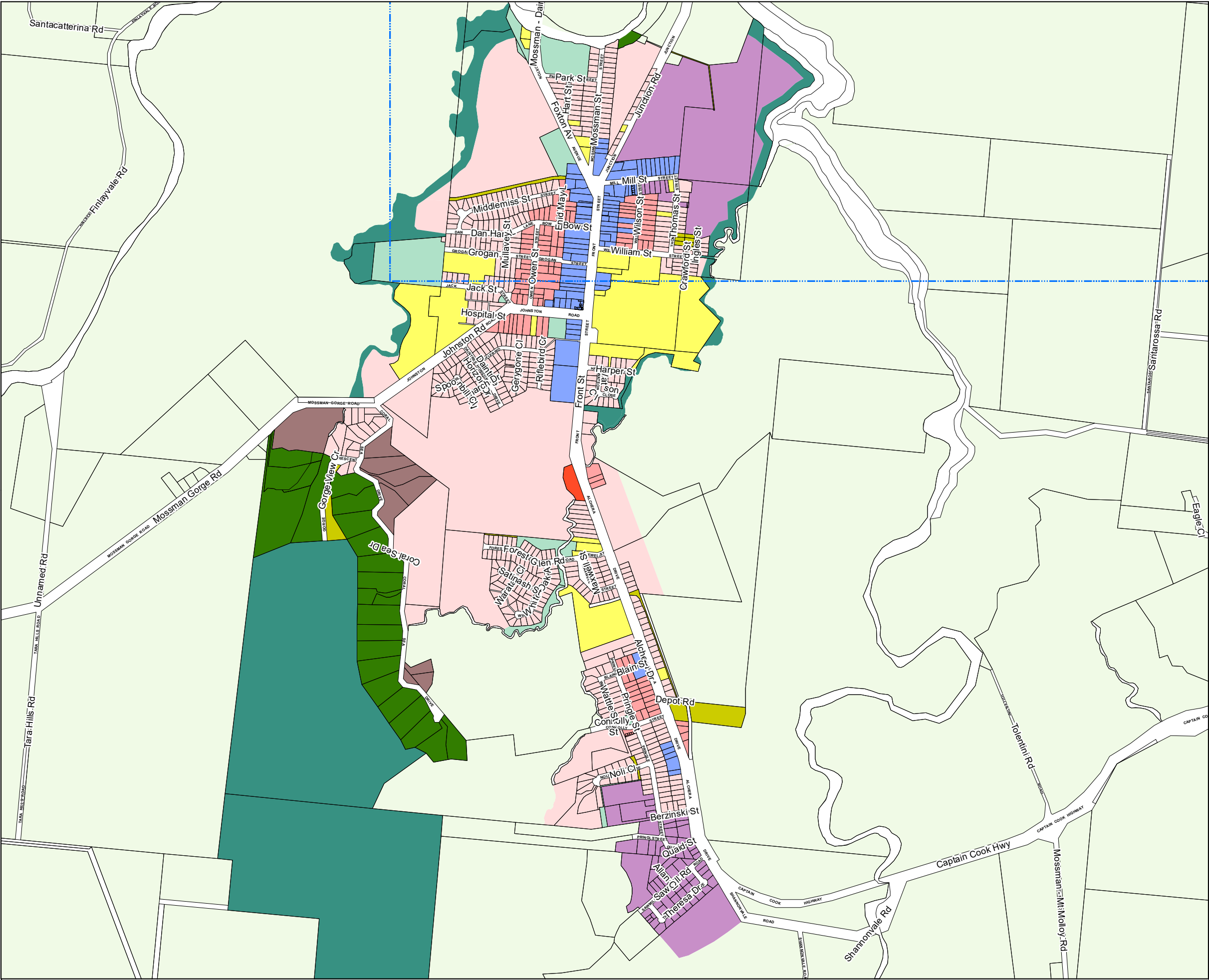
© Douglas Shire Council Planning Scheme Mapping 2018 Ver 1.0
© State of Queensland and its Agencies 2017.

Produced by: Mangoesmapping Pty Ltd on 31/10/2017
hello@mangoesmapping.com.au



Map Sheets:





Planning Scheme Zone Map

- Zones:**
- | | |
|--------------------------------|--------------------------|
| Low Density Residential | Environmental Management |
| Low-medium Density Residential | Conservation |
| Medium Density Residential | Industry |
| Tourist Accommodation | Tourism |
| Centre | Community Facilities |
| Recreation and Open Space | Rural |
| | Rural Residential |
| | Special Purpose |

- Other Map Layers:**
- | | |
|-----------------------------|---------------------|
| 1:15,000 Map Extents | Property Boundaries |
| Local Government Boundaries | Ocean |

Based on or contains data provided by Douglas Shire Council and the State of Queensland. In consideration of these agencies permitting use of this data you acknowledge and agree that these agencies give no warranty in relation to the data (including accuracy, reliability, completeness, currency or suitability) and accept no liability (including without limitation, liability in negligence) for any loss, damage or costs (including consequential damage) relating to any use of the data. Data must not be used for direct marketing or be used in breach of the privacy laws.

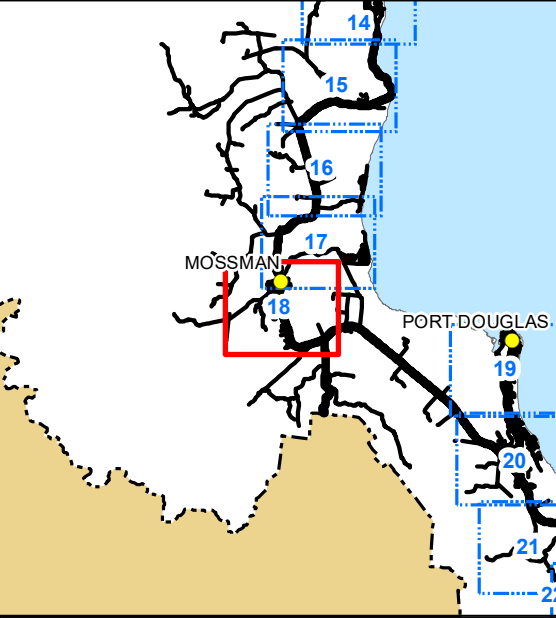
© Douglas Shire Council Planning Scheme Mapping 2018 Ver 1.0
© State of Queensland and its Agencies 2017.

Produced by: Mangoesmapping Pty Ltd on 31/10/2017
hello@mangoesmapping.com.au

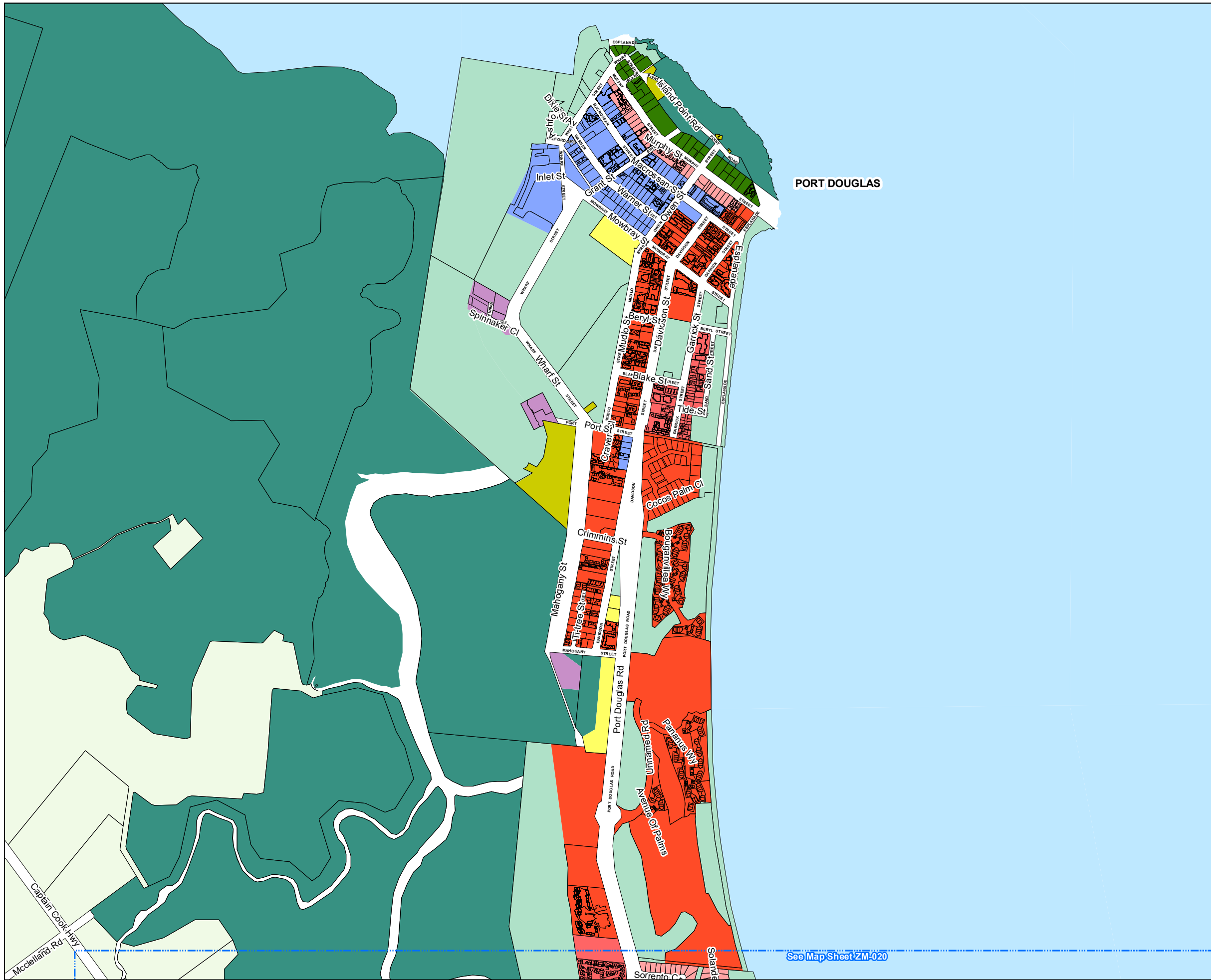
Projection: MGA94 Zone 55
Approx. Scale @ A3 1:15,000

0 0.2 0.4 0.6 Kms

Map Sheets:



Zoning Map Sheet - ZM-018



PORT DOUGLAS

See Map Sheet ZM-020

Zoning Map Sheet - ZM-019



Planning Scheme Zone Map

Zones:

- | | |
|--------------------------------|--------------------------|
| Low Density Residential | Environmental Management |
| Low-medium Density Residential | Conservation |
| Medium Density Residential | Industry |
| Tourist Accommodation | Tourism |
| Centre | Community Facilities |
| Recreation and Open Space | Rural |
| | Rural Residential |
| | Special Purpose |

Other Map Layers:

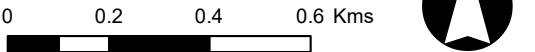
- | | |
|-----------------------------|---------------------|
| 1:15,000 Map Extents | Property Boundaries |
| Local Government Boundaries | Ocean |

Based on or contains data provided by Douglas Shire Council and the State of Queensland. In consideration of these agencies permitting use of this data you acknowledge and agree that these agencies give no warranty in relation to the data (including accuracy, reliability, completeness, currency or suitability) and accept no liability (including without limitation, liability in negligence) for any loss, damage or costs (including consequential damage) relating to any use of the data. Data must not be used for direct marketing or be used in breach of the privacy laws.

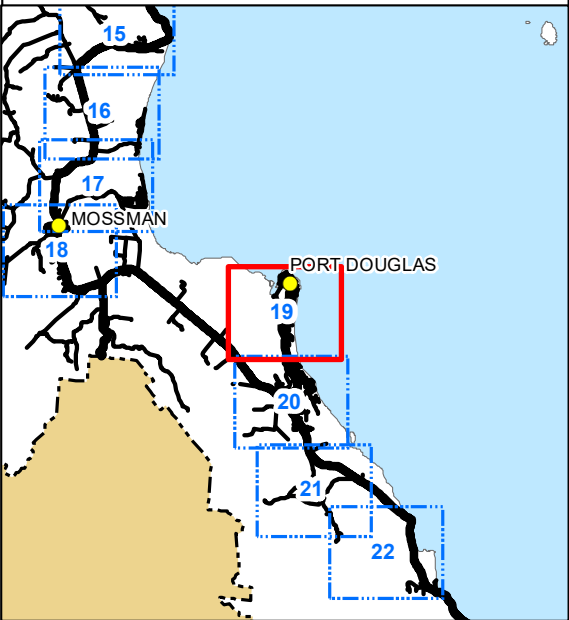
© Douglas Shire Council Planning Scheme Mapping 2018 Ver 1.0
© State of Queensland and its Agencies 2017.

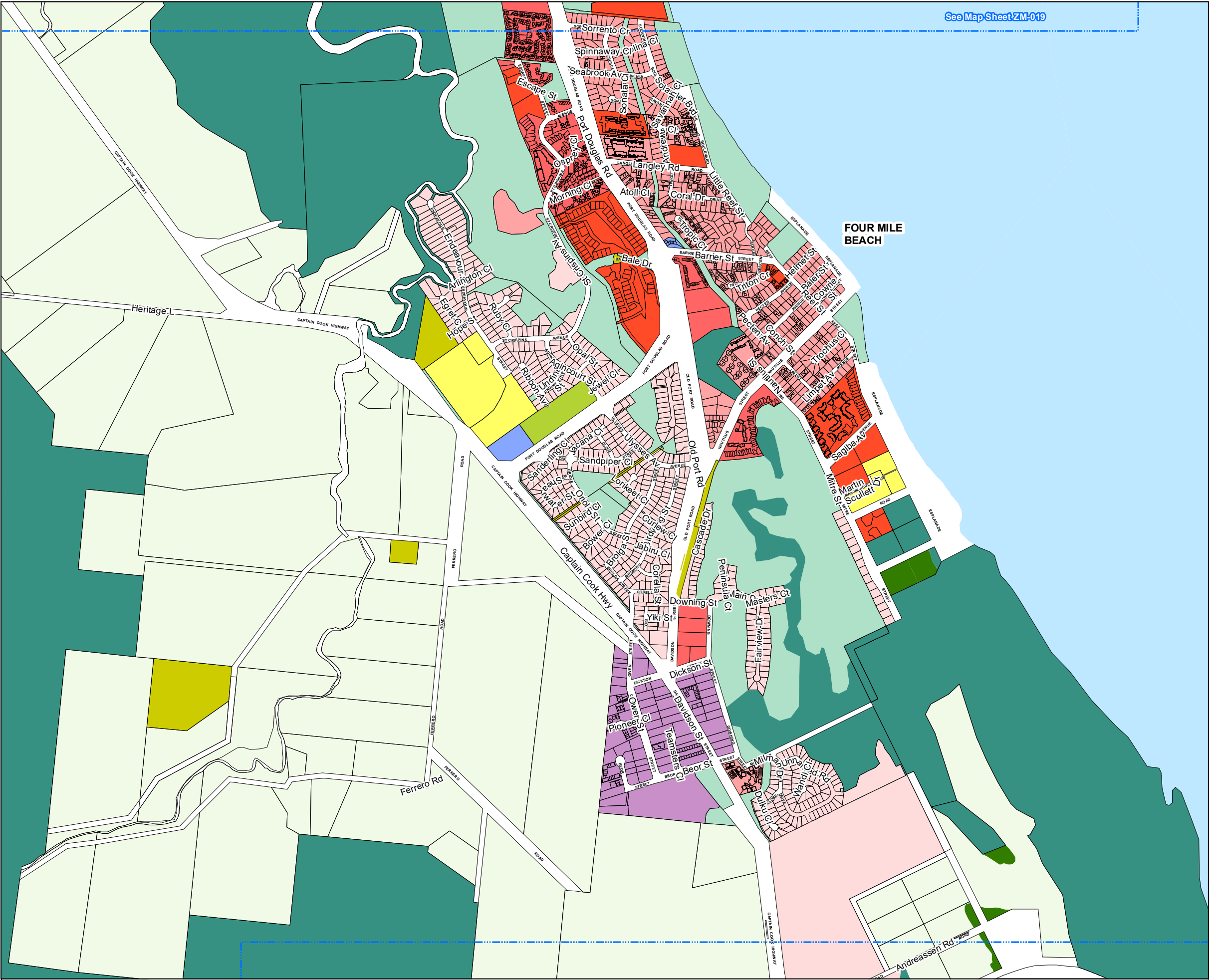
Produced by: Mangoesmapping Pty Ltd on 31/10/2017
hello@mangoesmapping.com.au

Projection: MGA94 Zone 55
Approx. Scale @ A3 1:15,000



Map Sheets:





See Map Sheet ZM-019



Planning Scheme Zone Map

- Zones:**
- Low Density Residential
 - Low-medium Density Residential
 - Medium Density Residential
 - Tourist Accommodation
 - Centre
 - Recreation and Open Space
 - Environmental Management
 - Conservation
 - Industry
 - Tourism
 - Community Facilities
 - Rural
 - Rural Residential
 - Special Purpose

- Other Map Layers:**
- 1:15,000 Map Extents
 - Local Government Boundaries
 - Property Boundaries
 - Ocean

Based on or contains data provided by Douglas Shire Council and the State of Queensland. In consideration of these agencies permitting use of this data you acknowledge and agree that these agencies give no warranty in relation to the data (including accuracy, reliability, completeness, currency or suitability) and accept no liability (including without limitation, liability in negligence) for any loss, damage or costs (including consequential damage) relating to any use of the data. Data must not be used for direct marketing or be used in breach of the privacy laws.

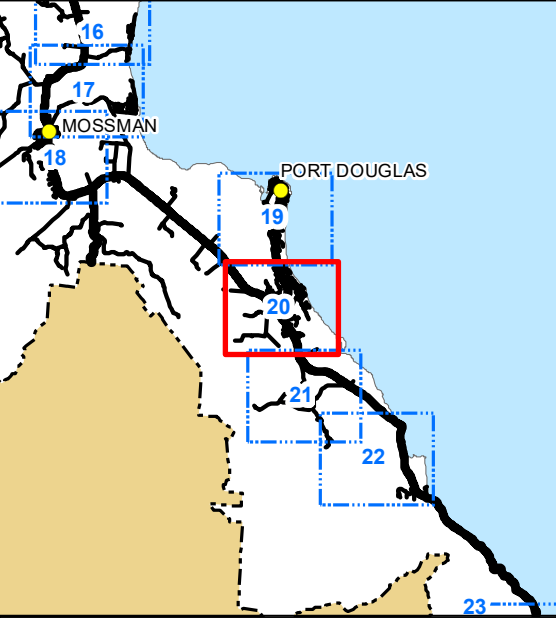
© Douglas Shire Council Planning Scheme Mapping 2018 Ver 1.0
© State of Queensland and its Agencies 2017.

Produced by: Mangoesmapping Pty Ltd on 31/10/2017
hello@mangoesmapping.com.au

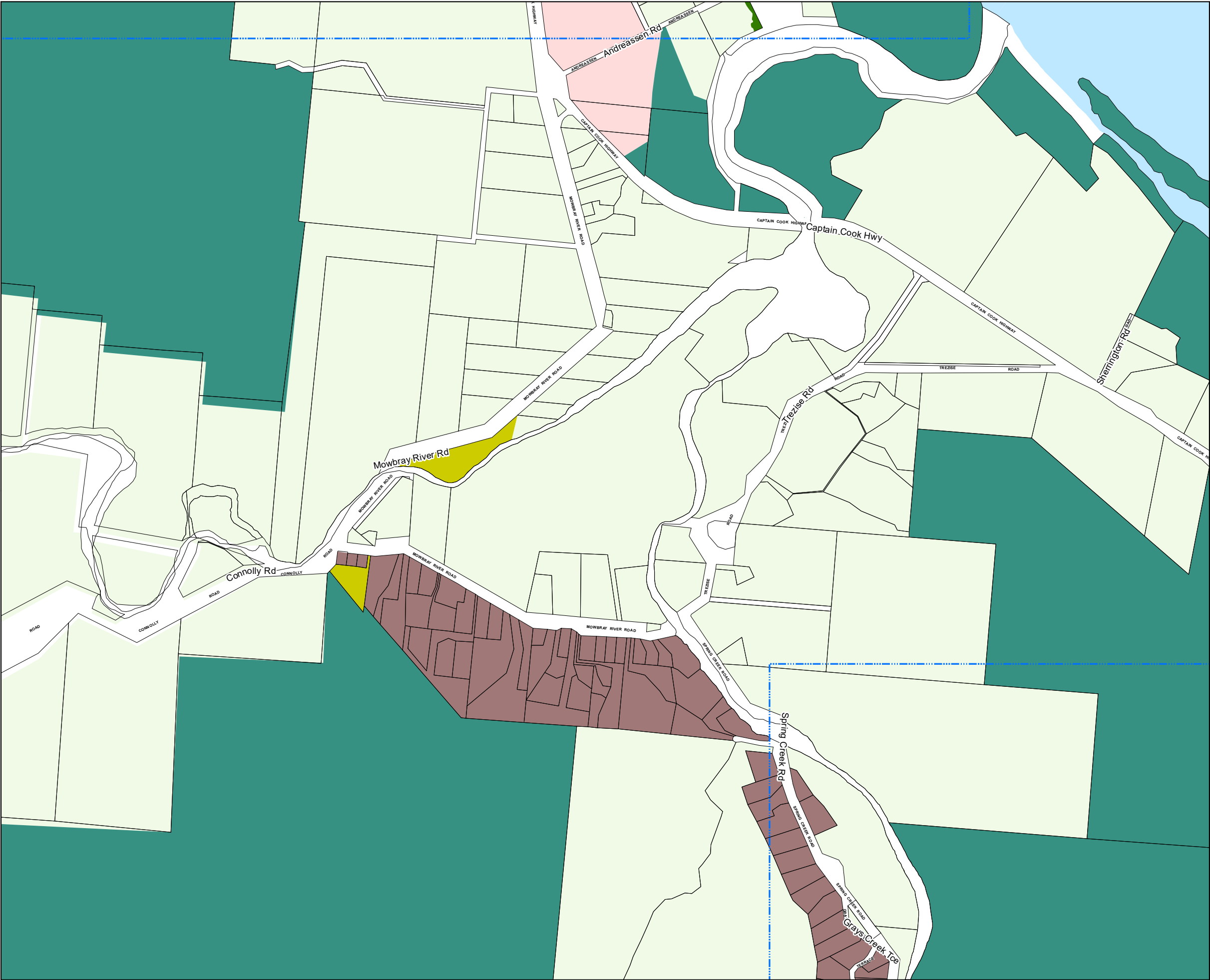
Projection: MGA94 Zone 55
Approx. Scale @ A3 1:15,000

0 0.2 0.4 0.6 Kms

Map Sheets:



Zoning Map Sheet - ZM-020



Zoning Map Sheet - ZM-021



Planning Scheme Zone Map

- Zones:**
- | | |
|--------------------------------|--------------------------|
| Low Density Residential | Environmental Management |
| Low-medium Density Residential | Conservation |
| Medium Density Residential | Industry |
| Tourist Accommodation | Tourism |
| Centre | Community Facilities |
| Recreation and Open Space | Rural |
| | Rural Residential |
| | Special Purpose |

- Other Map Layers:**
- | | |
|-----------------------------|---------------------|
| 1:15,000 Map Extents | Property Boundaries |
| Local Government Boundaries | Ocean |

Based on or contains data provided by Douglas Shire Council and the State of Queensland. In consideration of these agencies permitting use of this data you acknowledge and agree that these agencies give no warranty in relation to the data (including accuracy, reliability, completeness, currency or suitability) and accept no liability (including without limitation, liability in negligence) for any loss, damage or costs (including consequential damage) relating to any use of the data. Data must not be used for direct marketing or be used in breach of the privacy laws.

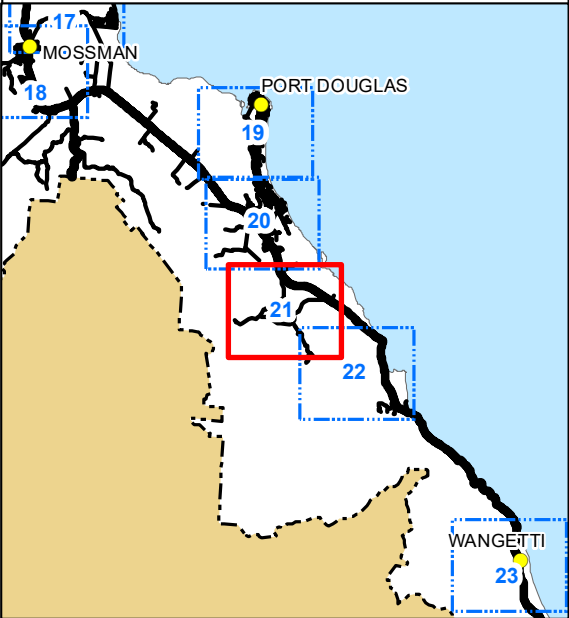
© Douglas Shire Council Planning Scheme Mapping 2018 Ver 1.0
© State of Queensland and its Agencies 2017.

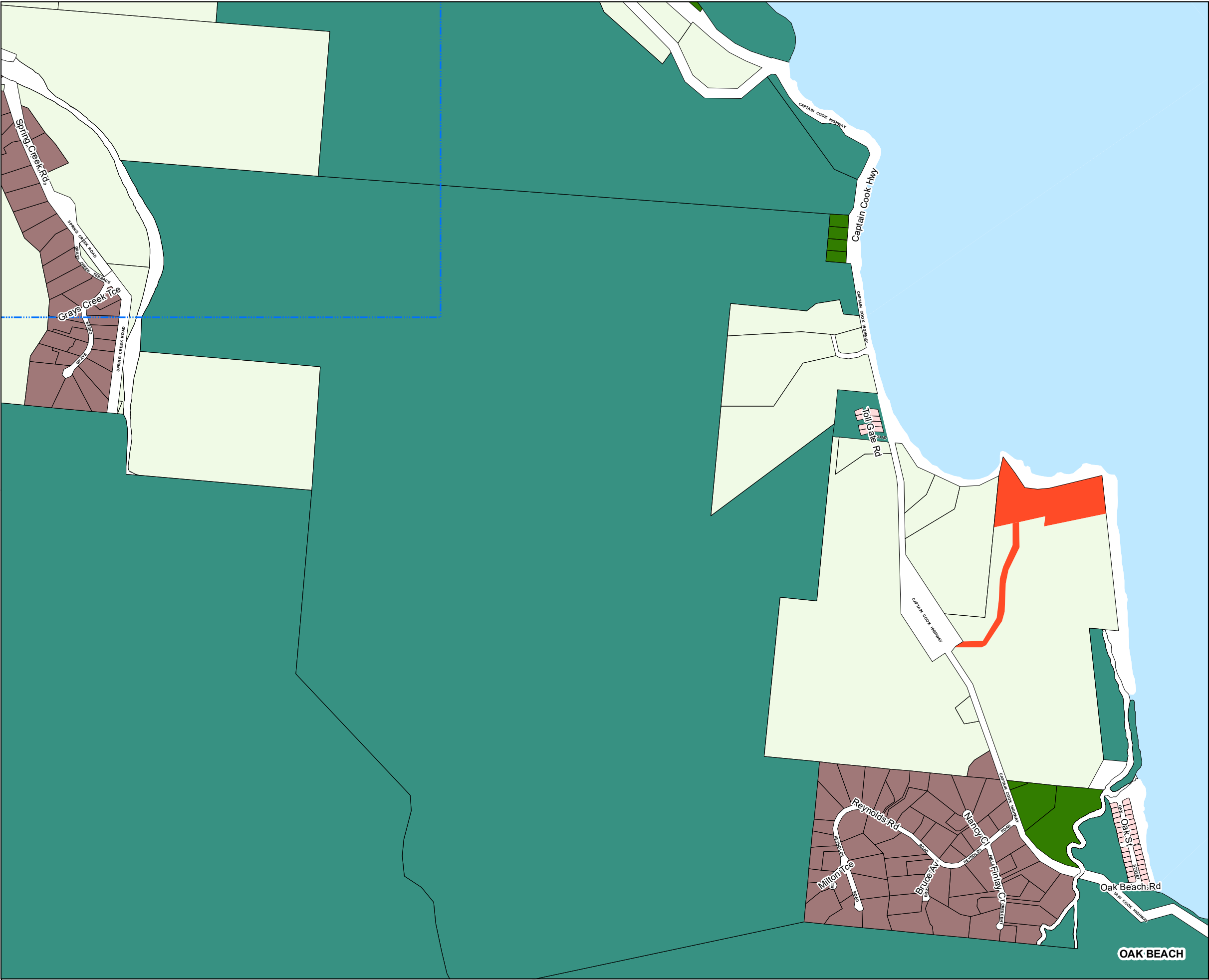
Produced by: Mangoesmapping Pty Ltd on 31/10/2017
hello@mangoesmapping.com.au

Projection: MGA94 Zone 55
Approx. Scale @ A3 1:15,000

0 0.2 0.4 0.6 Kms

Map Sheets:





Zoning Map Sheet - ZM-022



Planning Scheme Zone Map

- Zones:**
- | | |
|--------------------------------|--------------------------|
| Low Density Residential | Environmental Management |
| Low-medium Density Residential | Conservation |
| Medium Density Residential | Industry |
| Tourist Accommodation | Tourism |
| Centre | Community Facilities |
| Recreation and Open Space | Rural |
| | Rural Residential |
| | Special Purpose |

- Other Map Layers:**
- | | |
|-----------------------------|---------------------|
| 1:15,000 Map Extents | Property Boundaries |
| Local Government Boundaries | Ocean |

Based on or contains data provided by Douglas Shire Council and the State of Queensland. In consideration of these agencies permitting use of this data you acknowledge and agree that these agencies give no warranty in relation to the data (including accuracy, reliability, completeness, currency or suitability) and accept no liability (including without limitation, liability in negligence) for any loss, damage or costs (including consequential damage) relating to any use of the data. Data must not be used for direct marketing or be used in breach of the privacy laws.

© Douglas Shire Council Planning Scheme Mapping 2018 Ver 1.0
© State of Queensland and its Agencies 2017.

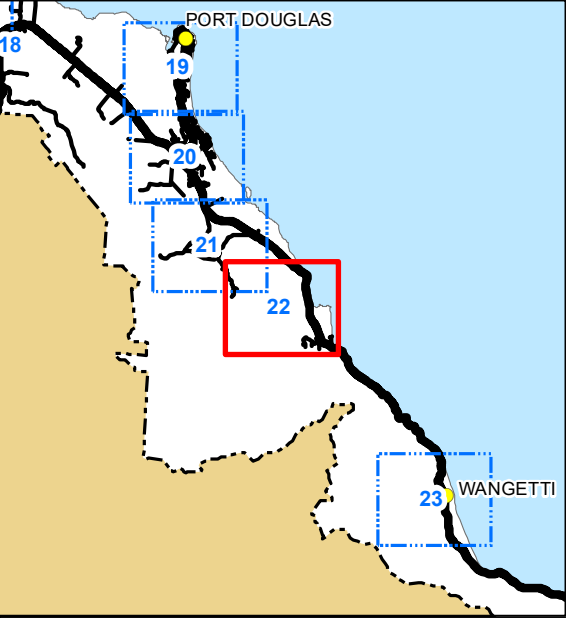
Produced by: Mangoesmapping Pty Ltd on 31/10/2017
hello@mangoesmapping.com.au

Projection: MGA94 Zone 55
Approx. Scale @ A3 1:15,000

00.20.40.6

Kms

Map Sheets:





Zoning Map Sheet - ZM-023



Planning Scheme Zone Map

- Zones:**
- | | |
|--------------------------------|--------------------------|
| Low Density Residential | Environmental Management |
| Low-medium Density Residential | Conservation |
| Medium Density Residential | Industry |
| Tourist Accommodation | Tourism |
| Centre | Community Facilities |
| Recreation and Open Space | Rural |
| | Rural Residential |
| | Special Purpose |

- Other Map Layers:**
- | | |
|-----------------------------|---------------------|
| 1:15,000 Map Extents | Property Boundaries |
| Local Government Boundaries | Ocean |


Based on or contains data provided by Douglas Shire Council and the State of Queensland. In consideration of these agencies permitting use of this data you acknowledge and agree that these agencies give no warranty in relation to the data (including accuracy, reliability, completeness, currency or suitability) and accept no liability (including without limitation, liability in negligence) for any loss, damage or costs (including consequential damage) relating to any use of the data. Data must not be used for direct marketing or be used in breach of the privacy laws.

© Douglas Shire Council Planning Scheme Mapping 2018 Ver 1.0
© State of Queensland and its Agencies 2017.

Produced by: Mangoesmapping Pty Ltd on 31/10/2017
hello@mangoesmapping.com.au

Projection: MGA94 Zone 55
Approx. Scale @ A3 1:15,000

0 0.2 0.4 0.6 Kms



Map Sheets:

