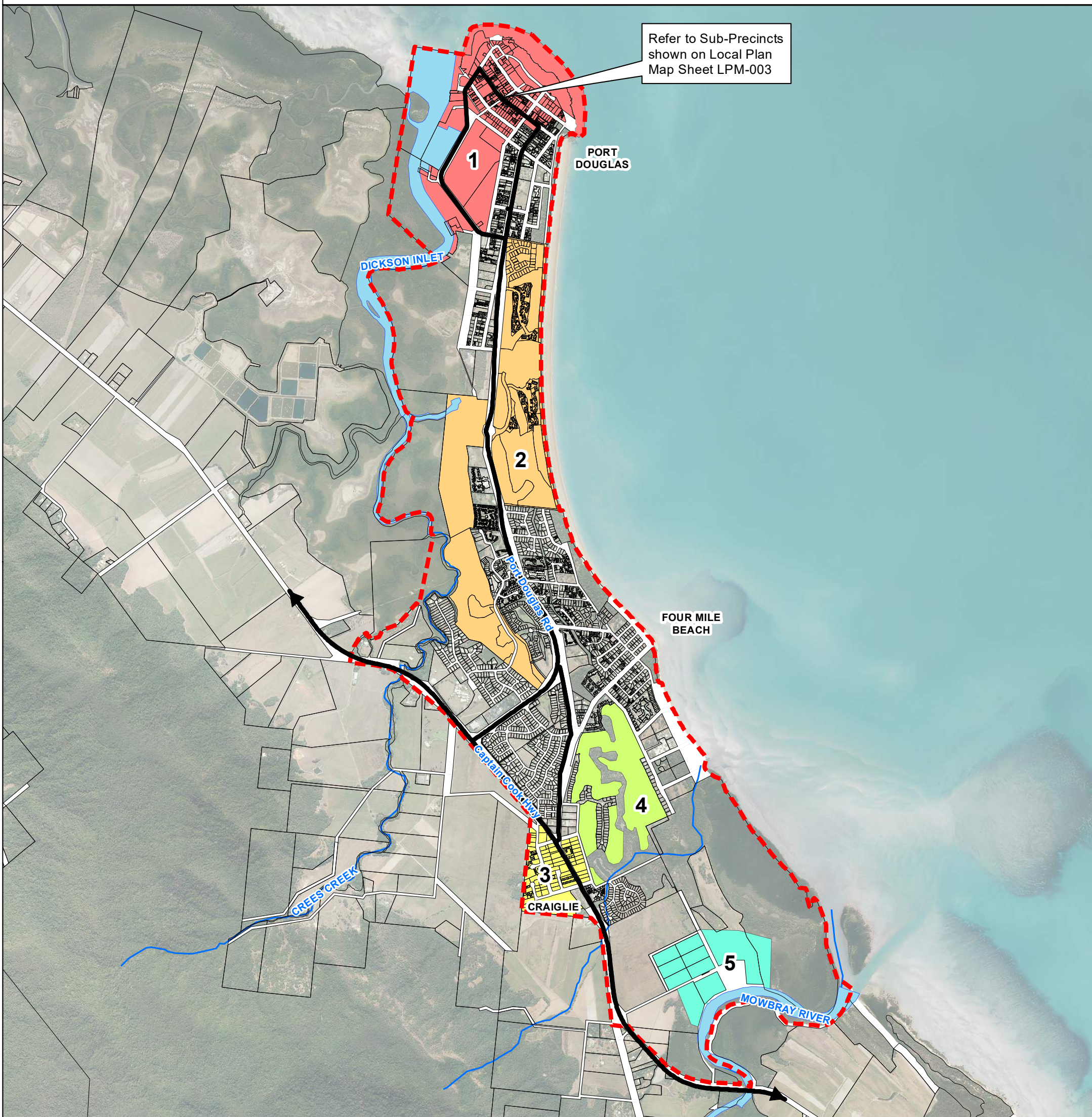


Local Plan Map Sheet - LPM-005



Port Douglas / Craiglie Local Plan Precincts

- Other Map Layers:**
- Property Boundaries (11/02/2017)
 - Waterbodies
 - Major Rivers / Creeks

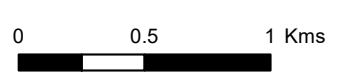
- Local Plan Precincts:**
- Major Road Connections
 - Local Plan Boundary
 - Precinct 1 - Port Douglas
 - Precinct 2 - Integrated Resort
 - Precinct 3 - Craiglie Commercial and Light Industry
 - Precinct 4 - Old Port Road / Mitre Street
 - Precinct 5 - Very Low Density Residential / Low Scale Recreation, Low Scale Educational/Low Scale Entertainment Uses Precinct

Based on or contains data provided by Douglas Shire Council and the State of Queensland. In consideration of these agencies permitting use of this data you acknowledge and agree that these agencies give no warranty in relation to the data (including accuracy, reliability, completeness, currency or suitability) and accept no liability (including without limitation, liability in negligence) for any loss, damage or costs (including consequential damage) relating to any use of the data. Data must not be used for direct marketing or be used in breach of the privacy laws.

© Douglas Shire Council Planning Scheme Mapping 2018 Ver 1.0
© State of Queensland and its Agencies 2017.

Produced by: Mangoesmapping Pty Ltd on 27/10/2017
hello@mangoesmapping.com.au

Projection: MGA94 Zone 55
Approx. Scale @ A3 1:30,000



Overview:

