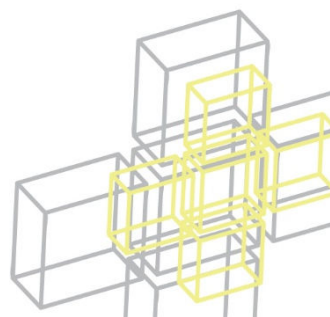


Annexure 11: Landscape Plans





DRAWING SCHEDULE

511_TP_01	COVER PAGE
511_TP_02	SITE PLAN
511_TP_03	GENERAL SPECIFICATION
511_TP_04	PLANT SCHEDULE
511_TP_05	PLANT SCHEDULE
511_TP_10	LANDSCAPE PLAN - BASEMENT LEVEL
511_TP_11	LANDSCAPE PLAN - LOWER GROUND
511_TP_12	LANDSCAPE PLAN - GROUND LEVEL
511_TP_13	LANDSCAPE PLAN - GROUND LEVEL - EAST
511_TP_14	LANDSCAPE PLAN - LEVEL 1
511_TP_15	LANDSCAPE PLAN - LEVEL 2
511_TP_16	LANDSCAPE PLAN - LEVEL 3
511_TP_17	LANDSCAPE PLAN - LEVEL 4
511_TP_20	SOUTHERN ELEVATION
511_TP_21	NORTHERN ELEVATION
511_TP_22	WESTERN ELEVATION
511_TP_23	EASTERN ELEVATION
511_TP_24	DRIVEWAY ELEVATION
511_TP_30	TYPICAL DETAILS

THE CREATION HOTEL & RESIDENCE

PORT DOUGLAS

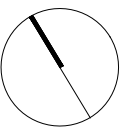
PROJECT:
69-73 MURPHY STREET, PORT DOUGLAS

CLIENT:
GURNER

AMENDMENT		
ISSUE	DATE	DETAILS
A	19.11.20	ISSUE FOR DA

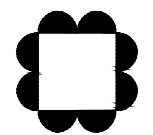
MBD MUST BE PRESENT ON-SITE FOR THE POSITIONING OF **ALL PLANTS**.
CONTACT MBD IF DISCREPANCIES OCCUR BETWEEN LANDSCAPE AND CONSULTANTS DOCUMENTS.
BUILDER TO CHECK AND VERIFY ALL DIMENSIONS ON SITE PRIOR TO CONSTRUCTION.

DRAWING:
COVER PAGE



DWG No: 511_TP_01
SCALE: AS NOTED
DRAWN: RM

CHECKED: LM
ISSUE: A
THIS DRAWING IS COPYRIGHT



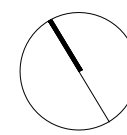
MYLES BALDWIN DESIGN
8 Maddison Lane, Redfern, NSW 2016 Australia
PH +61 2 9699 2622 | www.mylesbaldwin.com

PROJECT:
69-73 MURPHY STREET, PORT DOUGLAS
CLIENT:
GURNER

AMENDMENT		
ISSUE	DATE	DETAILS
A	19.11.20	ISSUE FOR DA

MBD MUST BE PRESENT ON-SITE FOR THE POSITIONING OF **ALL PLANTS**.
CONTACT MBD IF DISCREPANCIES OCCUR BETWEEN LANDSCAPE AND CONSULTANTS DOCUMENTS.
BUILDER TO CHECK AND VERIFY ALL DIMENSIONS ON SITE PRIOR TO CONSTRUCTION.

DRAWING:
SITE PLAN



DWG No:	S11_TP_02	CHECKED:	LM
SCALE:	AS NOTED	ISSUE:	A
DRAWN:	RM	THIS DRAWING IS COPYRIGHT	

GENERAL SPECIFICATION NOTES

1.0 Standards

- 1.1 Soils
- Site and imported topsoil: To AS 4419.
 - Potting mixes: To AS 3743.
 - Composts, soil conditioners and mulches: To AS 4454.

2.0 Products

- 2.1 Material

Topsoil

- Source: Provide topsoil, which contains organic matter, will support plant life and is free from stones, contaminants and weeds.
- Site: If available, provide material recovered from the site.

Turf

- Supplier: Obtain turf from a specialist grower of cultivated turf.
- Quality: Provide turf of even thickness, free from weeds and other foreign matter.

Fertiliser

- General: Provide proprietary fertilisers, delivered to the site in sealed bags marked to show manufacturer or vendor, weight, fertiliser type, N:P:K ratio, recommended uses and application rates.

Plants

- Health: Supply plants with foliage size, texture and colour at time of delivery consistent with the size, texture and colour shown in healthy specimens of the nominated species.
- Vigour: Supply plants with extension growth consistent with that exhibited in vigorous specimens of the species nominated.
- Damage: Supply plants free from damage and from restricted habit due to growth in nursery rows.
- Pests and disease: Supply plants with foliage free from attack by pests or disease.

3.0 Execution

- 3.1 Preparation

Weed eradication

- Herbicide: Eradicate weeds with a non-residual glyphosate herbicide in any of its registered formulae, at the recommended maximum rate.

Earth mounds

- Placing: Place clean filling in layers approximately 150 mm thick compacted to 85% of the dry density ratio of the surrounding soil as determined by AS 1289.5.4.1. Minimise slumping and further internal packing down.

Edges

- Construct changes in grade over a minimum width of 500 mm to smooth, gradual and rounded profiles with no distinct joint.

Existing trees

- Maintain the natural ground level under the canopy.

Planting beds

- Excavated: Excavate to bring the subsoil to at least 300 mm below finished design levels. Shape the subsoil to fall to subsoil drains where applicable. Break up the subsoil to a further depth of 100 mm.
- Unexcavated: Remove weeds, roots, building rubbish and other debris. Bring the planting bed to 75 mm below finished design levels.
- Services and roots: Do not disturb services or tree roots; if necessary cultivate these areas by hand.

Placing topsoil

- General: Spread the topsoil on the prepared subsoil and grade evenly, making the necessary allowances to permit the following:
- Required finished levels and contours may be achieved after light compaction.
- Grassed areas may be finished flush with adjacent hard surfaces such as kerbs, paths and mowing strips.

Topsoil depths

- General: Spread topsoil to the following typical depths:
- Excavated planting areas: If using organic soil, 300 mm. Refer to typical soil profile detail.
- Irrigated grassed areas generally: 150 mm.
- Irrigated grassed areas, heavy use (e.g. playing fields, playgrounds, and public parks): 200 mm.

- 3.2 Turling

General

- Supply: Deliver the turf within 24 hours of cutting, and lay it within 36 hours of cutting. Prevent the turf from drying out between cutting and laying. If it is not laid within 36 hours of cutting, roll it out on a flat surface with the grass up, and water as necessary to maintain a good condition.
- Laying: Lay the turf in the following manner:
 - In stretcher pattern with the joints staggered and close butted.
 - Parallel with the long sides of level areas, and with contours on slopes.
 - To finish flush, after tamping, with adjacent finished surfaces of ground, paving edging, or grass seeded areas.
- Tamping: Lightly tamp to an even surface immediately after laying. Do not use a roller.
- Fertilising: Mix the fertiliser thoroughly into the topsoil before placing the turf. Apply lawn fertiliser at the completion of the first and last mowings, and at other times as required to maintain healthy grass cover.
- Watering: Water immediately after laying until the topsoil is moistened to its full depth. Continue watering to maintain moisture to this depth.
- Levels: Where levels have deviated from the design levels after placing and watering, lift turf and re-grade topsoil to achieve design levels.

- 3.3 Planting

General

- Individual plantings in grassed areas: Excavate a hole to twice the diameter of the root ball and at least 100 mm deeper than the root ball. Break up the base of the hole to a further depth of 100 mm, and loosen compacted sides of the hole to prevent confinement of root growth.
- Watering: Thoroughly water the plants before planting, immediately after planting, and as required to maintain growth rates free of stress.
- Placing: Remove the plant from the container with minimum disturbance to the root ball, ensure that the root ball is moist and place it in its final position, in the center of the hole and plumb, and with the top soil level of the plant root ball level with the finished surface of the surrounding soil.
- Fertilising plants: In planting beds and individual plantings, place fertiliser pellets around the plants at the time of planting.
- Backfilling: Backfill with topsoil mixture. Lightly tamp and water to eliminate air pockets.

- 3.4 Mulching

Placing mulch

- General: Place mulch to the required depth, clear of plant stems, and rake to an even surface flush with the surrounding finished levels. Spread and roll mulch so that after settling, or after rolling, it is smooth and evenly graded between design surface levels sloped towards the base of plant stems in plantation beds, and not closer to the stem than 50 mm in the case of gravel mulches.
- Depths: Spread organic mulch to a depth of 75 mm, and gravel mulch to a depth of 50 mm.

- 3.5 Stakes and ties

Stakes

- Material: Hardwood, straight, free from knots or twists, pointed at one end.
- Installation: Drive stakes into the ground at least one third of their length, avoiding damage to the root system.

Ties

- General: Provide 50 mm hessian webbing ties fixed securely to the stakes, one tie at half the height of the main stem, others as necessary to stabilise the plant.

- 3.6 Watering

Establishment

- Extent: Available soil moisture content of grass areas and garden beds to be monitored on a weekly basis using an approved moisture probe and water applied on a demand basis. Readings should be taken at a depth of 200-300mm.
- All grass areas and garden beds should be maintained within a range of 50-80% available soil moisture. Under no circumstance should areas under irrigation fall below a level of 30% available soil moisture.
- No visible signs of wilting of leaves or stems, with all plants fully turgid at all times.
- No sign of over-watering such as constantly wet soil, brown leaf margins, stem rot or brown spots on foliage.

- 3.7 Completion

Cleaning

- Stakes and ties: Remove those no longer required at the end of the planting establishment period.
- Temporary fences: Remove temporary protective fences at the end of the planting establishment period.

4.0 Establishment & defects liability

- 4.1 Establishment

General

- All landscaping works will have an establishment period of 26 weeks in which the subcontractor will be responsible for the maintenance and upkeep of the contracted scope, unless otherwise noted in the project documentation. If applicable refer to the project manager / builder for confirmation.

- 4.2 Defects Liability Period

General

- All landscaping works will be subject to a defects liability period of 52 weeks, commencing from the date of Practical Completion, unless otherwise noted in the project documentation. If applicable refer to the project manager / builder for confirmation.

PLANT SCHEDULE

TREES														
CODE	BOTANIC NAME	COMMON NAME	B1	LG	GL	L1	L2	L3	L4	FEATURE	POTS	POT SIZE	MATURE HEIGHT	TOTAL QUANTITY
CA	Cupaniopsis anacardioides	Tuckeroo	4		3							Mature	6-8m	7
CN	Cocos nucifera	Coconut Palm	3		10	2			2			Mature	6-10m	17
CS	Chorisia speciosa	Silk Floss Tree			1							300L	8-10m	1
DP	Dypsis pambana	Pemba Palm	3			1	☛	☛	☛	☛		200L	4-6m	4
FA	Flindersia australis	Crown Ash	1									300L	6-8m	1
FH	Ficus Hillii	Flash							15			200L	3m	15
FI	Ficus lyrata	Fiddle Leaf Fig			☛	☛	☛	☛	☛	☛		400mm	3m	pots
LD	Livistonia decipiens	Ribbon Fan Palm	6	2	7	6			3			Mature	6-10m	24
Lg	Licuala grandis	Ruffled Fan Palm			7	☛	☛	☛	☛	☛		400mm	2-3m	7
PS	Plumeria species	Frangipani	1		1	2			3			300L	6m	7
RF	Randia fitzalanii	Native Gardenia	3	1					1			300L	3m	5
SP	Schizolabium parahyba	Brazilian Fire Tree				8						200L	6-8m	8
WF	Waterhousea floribunda	Weeping Lilly Pilly	9		6								3-5m	15

SHRUBS & PERENNIALS														
CODE	BOTANIC NAME	COMMON NAME	B1	LG	GL	L1	L2	L3	L4			POT SIZE	MATURE HEIGHT	
Am	Alocasia macrorrhiza	Giant Taro	65		15							400mm	1.5-2.5m	80
Az	Alpinia zerumbet	Shell Ginger	42			42			32			200mm	2-3m	116
Cm	Carissa macrocarpa 'Emerald star'	Natal Plum			112	154			167			300mm	0.6m	433
Fm	Ficus microcarpa 'Green Island'	Green Island Fig	15	82	132	94	62	46	124			300mm	0.6m	555
Mc	Molineria capitulata	Palm Grass	180						45			140mm	0.8m	225
Md	Monstera deliciosa	Delicious Monster				54			22			400mm	3m	76
Mp	Muraya paniculata	Orange Jasmine	70	9	185	22			18			400mm	1-3m	304
Px	Philodendron 'Xanadu'	Philodendron			642							300mm	0.8m	642
Re	Rhapis excelsa	Broadleaf lady palm	12	15	19				☛	☛		300mm	4m	46
Sn	Strelitzia nicotii	Bird of Paradise			☛	3			2	☛		400mm	4m	5
FERNS														
CODE	BOTANIC NAME	COMMON NAME	B1	LG	GL	L1	L2	L3	L4			POT SIZE	MATURE HEIGHT	
Am	Asparagus densiflorus 'Myersii'	Foxtail Asparagus				288	☛	☛	☛	☛		200mm	0.7m	288
Aa	Asplenium antiquum	Birds'nest Fern			33							200mm	1m	33
Bn	Blechnum gibbum	Silver Lady Fern	120	43	144							200mm	1m	307
Md	Microsorium diversifolium	Kangaroo Fern		168	133							100mm	0.4m	301
GROUNDCOVERS & CLIMBERS														
CODE	BOTANIC NAME	COMMON NAME	B1	LG	GL	L1	L2	L3	L4			POT SIZE	MATURE HEIGHT	
B	Bougainvillea sp. 'Pink'	Bougainvillea							☛	☛		200mm	Climber	pots
Bc	Bauhinia corymbosa	Yunnan bauhinia	120	45	113	65	54	22				200mm	Cascading	419
Cf	Chonemorpha fragrans	Frangipani Vine			60							140mm	Climber	60
Fp	Ficus pumila	Creeping fig	133			154	76	122	184			140mm	Climber	669
Hc	Hedera canariensis	The Canarian Ivy	75						322			100mm	Cascading Groundcover	397
Ma	Monstera adansonii	Swiss cheese plant				42			45			140mm	Climber	87
Rc	Rhaphidophora cryptantha	Shingle Plant			22	55						100mm	Climber	77
Ta	Trachelospermum asiaticum	Asiatic Jasmine	86		408				228			100mm	Groundcover	722
Ve	Tarmonia elliptica	Curtain creeper	32	164	480	645	135	105				100mm	Cascading	1561
Vo	Viola odorata	Native violet	144	95	110							100mm	Groundcover	349

TREES



Silk Floss Tree
Chorisia speciosa

Coconut Palm
Cocos nucifera

Tuckeroo
Cupaniopsis anacardioides

Pemba palm
Dypsis pambana



Crown Ash
Flindersia australis

Fiddle Leaf Fig
Ficus lyrata

Ruffled Fan Palm
Licuala grandis

Ribbon Fan Palm
Livistonia decipiens



Frangipani
Plumeria obtusa

Native Gardenia
Randia fitzalanii

Brazilian Fire Tree
Schizolabium parahyba

Weeping Lilly Pilly
Waterhousea floribunda

NOTES

- ALL MATURE TREES TO BE SOURCED AND SUPPLIED BY MYLES BALDWIN DESIGN
- THE PLANT SCHEDULE IS CALCULATED BASED OFF THE LANDSCAPE PLANS PROVIDED BY MBD. ADDITIONAL PLANTS OUTSIDE OF THIS SCHEDULE MAY BE REQUIRED TO REACH THE DESIRED PLANT DENSITIES ONSITE
- ALL PLANT MATERIAL TO BE SETOUT ONSITE BY MYLES BALDWIN DESIGN PRIOR TO INSTALLATION

GENERAL NOTES

- ALL LANDSCAPE DRAWINGS ARE TO BE READ IN CONJUNCTION WITH THE ARCHITECT'S AND ADDITIONAL CONSULTANT'S DRAWINGS, SPECIFICATIONS AND REPORTS
- ALL PUBLIC UTILITY SERVICES ARE TO BE LOCATED ON SITE BY THE CONTRACTOR PRIOR TO THE COMMENCEMENT OF WORKS. THE LOCATION, PRESENCE AND EXTENT OF SERVICES SHOWN ARE NOT GUARANTEED COMPLETE OR CORRECT
- PERFORM EXCAVATION IN THE VICINITY OF UNDERGROUND UTILITIES WITH CARE AND IF NECESSARY, BY HAND. THE CONTRACTOR BEARS FULL RESPONSIBILITY FOR THIS WORK AND DISRUPTION OR DAMAGE TO UTILITIES SHALL BE REPAIRED IMMEDIATELY AT NO EXPENSE TO THE OWNER
- NO TREES PROTECTED UNDER THE LOCAL COUNCIL'S TREE PRESERVATION ORDER ARE TO BE REMOVED UNLESS APPROVED BY DEVELOPMENT CONSENT OR PERMIT OBTAINED FROM COUNCIL
- ALL PAVING IS INDICATIVE, TO BE TO FUTURE SPECIFICATION, AND SET OUT ON SITE
- ALL WORK TO BE CARRIED OUT IN ACCORDANCE WITH THE LOCAL COUNCIL'S APPROVAL, STANDARDS AND CODES
- THE CONTRACTOR IS TO ENSURE THAT ALL THE WORKS ARE CARRIED OUT IN ACCORDANCE WITH THE WORK HEALTH AND SAFETY ACT
- MBD TO REVIEW PLANT MATERIALS AT SOURCE OR BY PHOTOGRAPHS PRIOR TO PURCHASE AND DELIVERY
- EXACT LOCATIONS OF NEW PLANT MATERIAL TO BE SETOUT AND APPROVED BY THE MBD ONSITE PRIOR TO INSTALLATION. MBD RESERVES THE RIGHT TO ADJUST PLANTS TO EXACT LOCATION ONSITE

DRAINAGE AND IRRIGATION NOTES

- REFER TO CIVIL ENGINEER'S UTILITY AND DRAINAGE PLANS FOR UTILITY LOCATION AND DRAINAGE INFORMATION.
- REQUIREMENTS FOR LANDSCAPE DRAINAGE TO BE CONFIRMED ONSITE UNLESS OTHERWISE SHOWN ON THE LANDSCAPE PLANS
- TREE PITS THAT HAVE BEEN EXCAVATED INTO HEAVY EARTH OR STONE TO CONTAIN A RING OF AG PIPE LAID AT THE INVERT OF THE PIT WITHIN A MINIMUM 200mm LAYER OF FREE DRAINING MATERIAL. AG PIPE TO BE CONNECTED TO A DRAINAGE OUTLET (REFER TO TYPICAL TREE PIT DRAINAGE SECTION)
- WATER / IRRIGATION CONTROLLER POINTS SHOWN INDICATIVELY ONLY. EXACT LOCATION TO BE CONFIRMED ONSITE
- ALL POTS TO HAVE AN IRRIGATION ALLOWANCE (SHRUBBLERS OR DRIP)
- FOR POTS LOCATED ON PAVED SURFACES, TYPICAL PAVING IRRIGATION DETAIL TO BE USED AS SHOWN
- POTS ADJACENT TO GARDEN BEDS TO BE IRRIGATED VIA IN GARDEN IRRIGATION SYSTEM
- ALL LAWN AREAS TO HAVE POPUP ROTORS
- ALL GARDEN BEDS TO HAVE FIXED SOLID RISERS WITH SPRAYS
- LOCATIONS OF IRRIGATION LINES, VALVES, SPRAY HEADS ETC ARE SHOWN INDICATIVELY ONLY. THE EXACT LOCATION AND FREQUENCY OF THE ABOVE TO BE NOMINATED BY THE IRRIGATION PROVIDER
- REFER TO IRRIGATION PLAN FOR FURTHER DETAIL

SHRUBS, PERENNIALS & FERNS



Giant Taro
Alcornoque macrantha



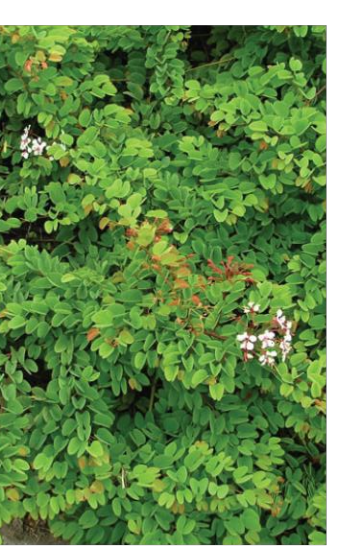
Shell Ginger
Alpinia zerumbet



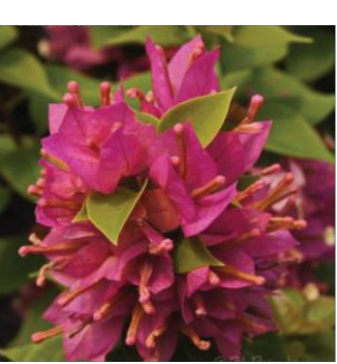
Natal Plum
Calissa macrocarpa 'Emerald Star'



Green Island Fig
Ficus microcarpa 'Green Island'



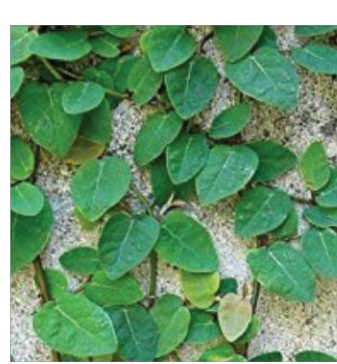
Yunnan bauhinia
Bauhinia corymbosa



Bougainvillea
Bougainvillea sp. 'Pink'



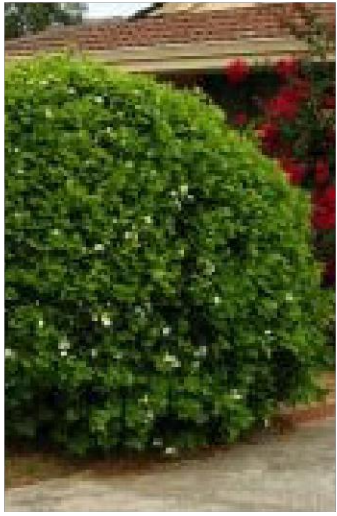
Frangipani Vine
Choromorpho fragrans



Creeping Fig
Ficus pumila



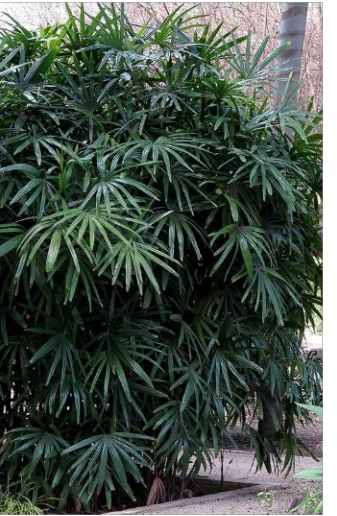
Palm grass
Molinia capitata



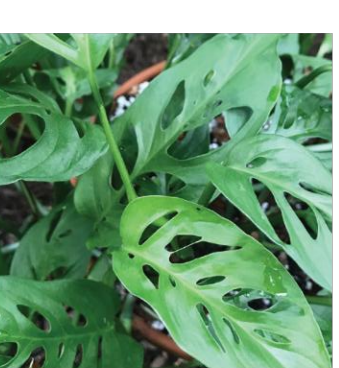
Orange Jasmine
Murraya paniculata



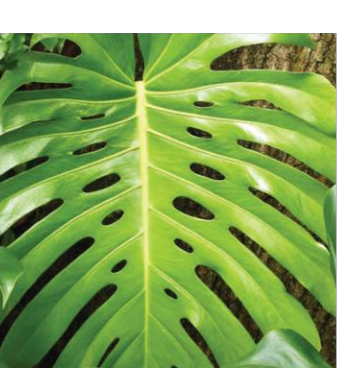
Philodendron
Philodendron 'Xanadu'



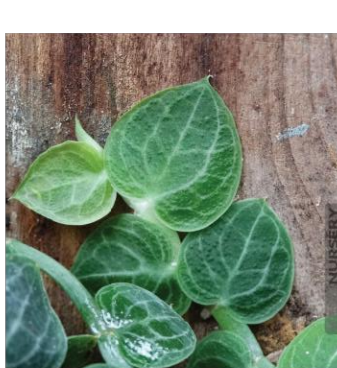
Broadleaf Lady Palm
Rhapis excelsa



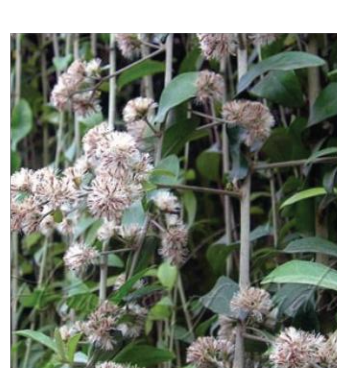
Swiss Cheese Plant
Monstera adansonii



Delicious monster
Monstera deliciosa



Shingle Plant
Rhaphidophora cryptantha



Curtain Creeper
Vernonia elliptica



Foxtail Asparagus
Asparagus densiflorus 'Myersii'



Birdsnes' Fern
Asplenium antiquum



Silver Lady Fern
Blechnum gibbum



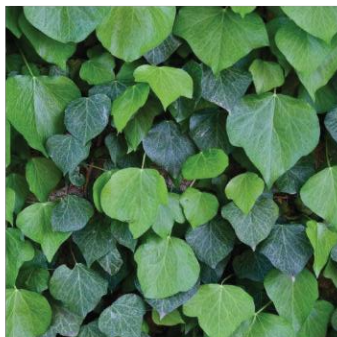
Kangaroo Fern
Microsorium diversifolium



Asiatic Jasmine
Trachelospermum asiaticum

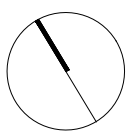


Native violet
Viola odorata

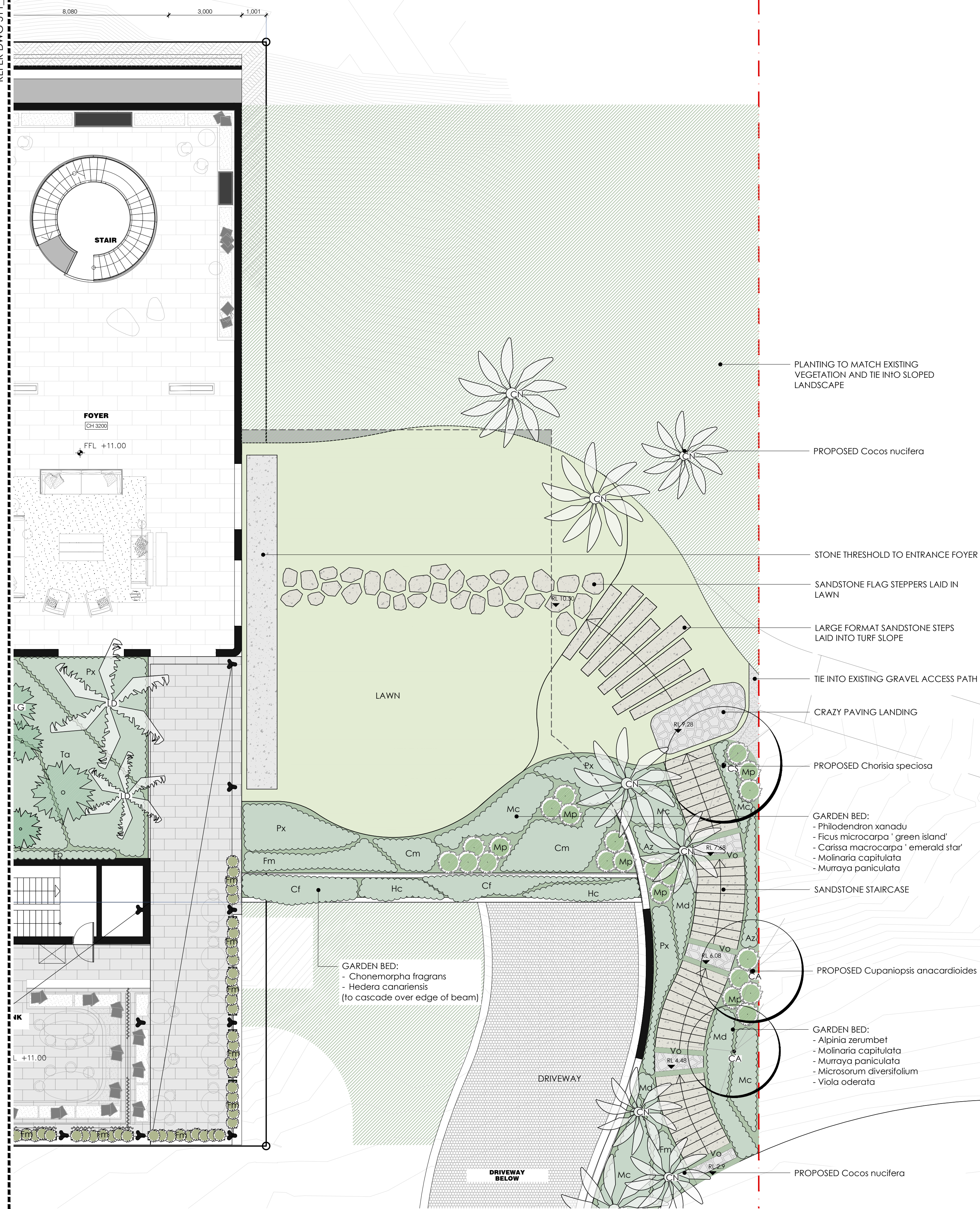


Canarian Ivy
Hedera canariensis

CLIMBERS, HANGING PLANTS & GROUNDCOVERS







SCALE 1:100

A horizontal scale bar with alternating black and white segments. Below the bar are numerical markings at 0, 1, 2, 3, 4, 5, and 10.



PROJECT:
69-73 MURPHY STREET, PORT DOUGLAS

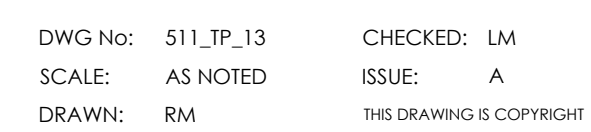
CLIENT:
GURNER

AMENDMENT		
ISSUE	DATE	DETAILS
A	19.11.20	ISSUE FOR DA

MBD MUST BE PRESENT ON-SITE FOR THE POSITIONING OF **ALL PLANTS**.
CONTACT MBD IF DISCREPANCIES OCCUR BETWEEN LANDSCAPE AND CONSULTANTS DOCUMENTS.
BUILDER TO CHECK AND VERIFY ALL DIMENSIONS ON SITE PRIOR TO CONSTRUCTION.

DRAWING:

LANDSCAPE PLAN
GROUND LEVEL - EAST



PROJECT:
69-73 MURPHY STREET, PORT DOUGLAS

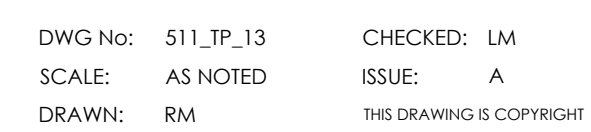
CLIENT:
GURNER

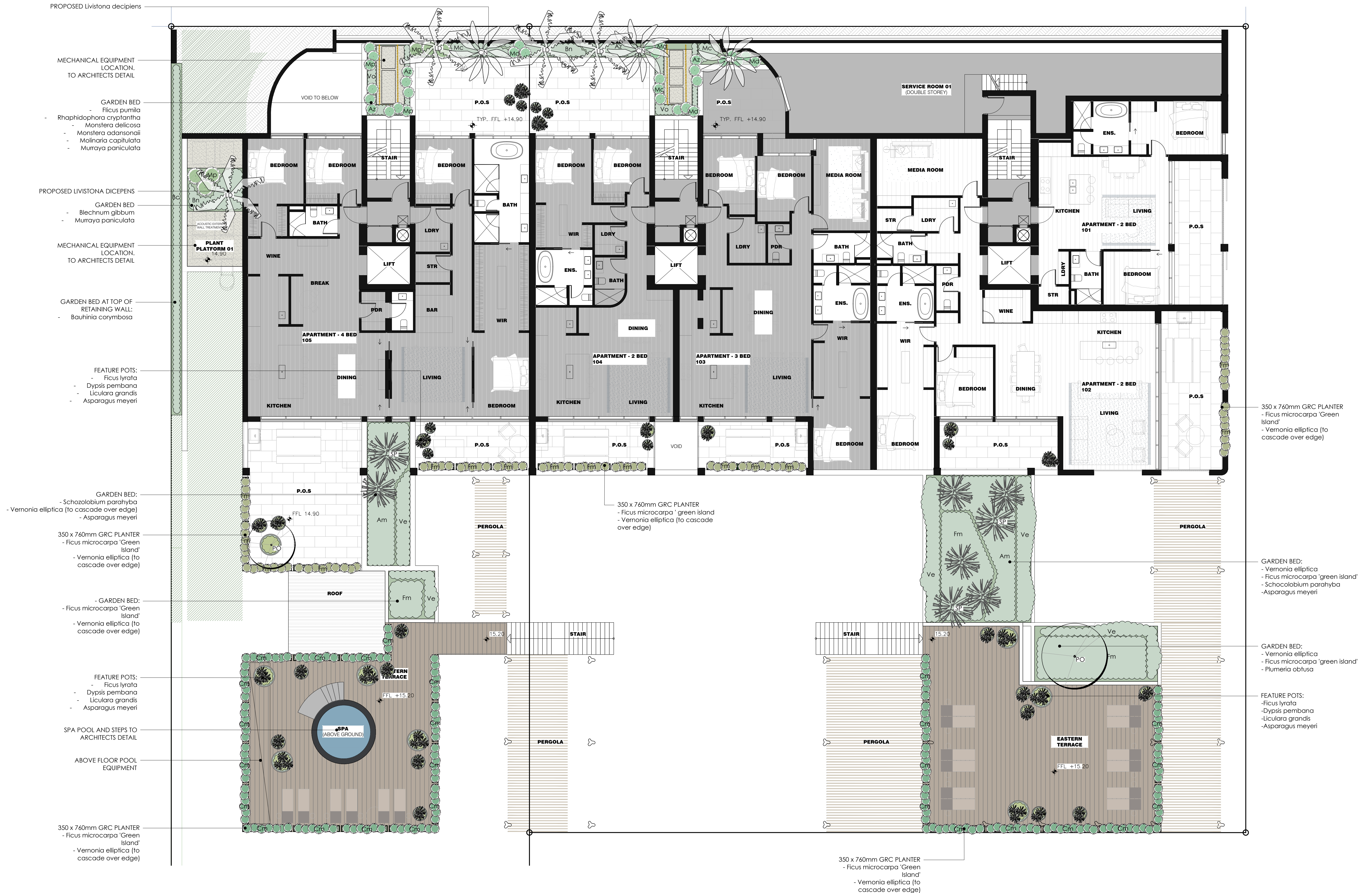
AMENDMENT		
ISSUE	DATE	DETAILS
A	19.11.20	ISSUE FOR DA

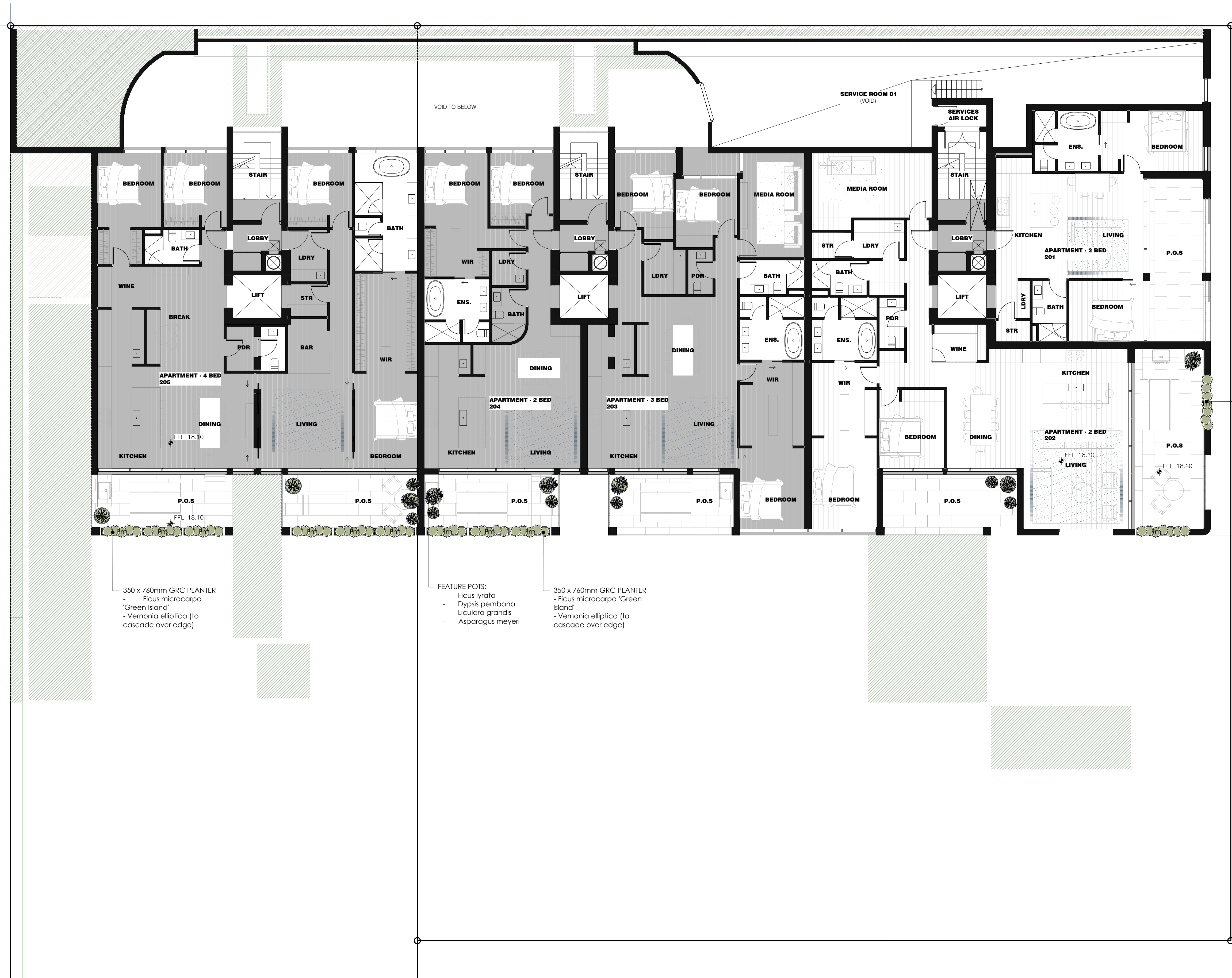
MBD MUST BE PRESENT ON-SITE FOR THE POSITIONING OF **ALL PLANTS**.
CONTACT MBD IF DISCREPANCIES OCCUR BETWEEN LANDSCAPE AND CONSULTANTS DOCUMENTS.
BUILDER TO CHECK AND VERIFY ALL DIMENSIONS ON SITE PRIOR TO CONSTRUCTION.

DRAWING:

LANDSCAPE PLAN
GROUND LEVEL - EAST





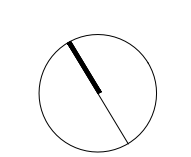
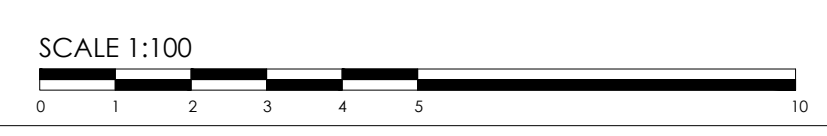


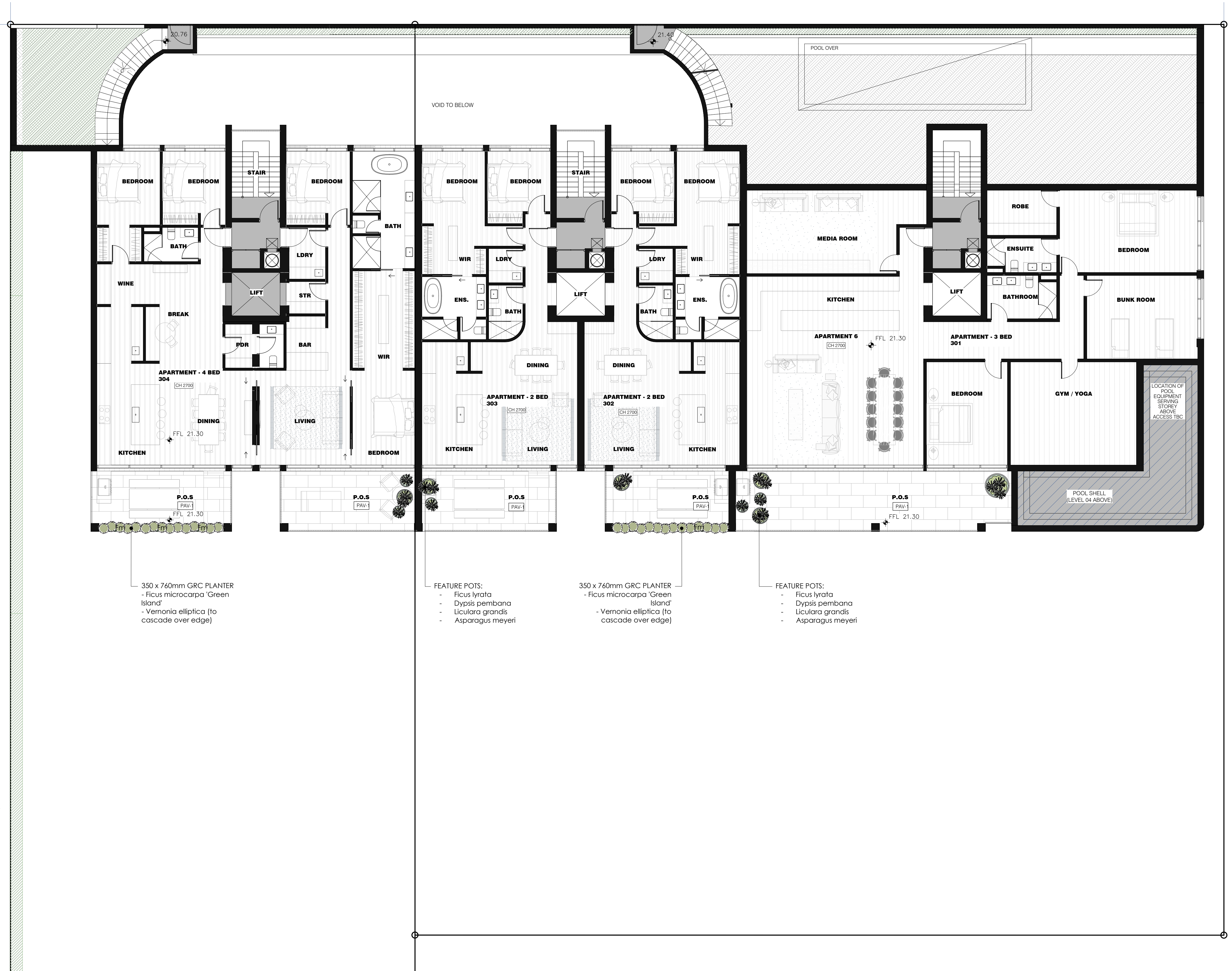
350 x 760mm GRC PLANTER
- Ficus microcarpa
- 'Green Island'
- Vernonia elliptica (to cascade over edge)

FEATURE POTS:
- Ficus lyrata
- Dyopsis peribana
- Licularia grandis
- Asparagus meyeri

350 x 760mm GRC PLANTER
- Ficus microcarpa 'Green Island'
- Vernonia elliptica (to cascade over edge)

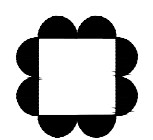
350 x 760mm GRC PLANTER
- Ficus microcarpa 'Green Island'
- Vernonia elliptica (to cascade over edge)





SCALE 1:100

0 1 2 3 4 5 10



MYLES BALDWIN DESIGN
8 Maddison Lane, Redfern, NSW 2016 Australia
PH +61 2 9699 2622 | www.mylesbaldwin.com

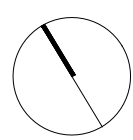
PROJECT:
69-73 MURPHY STREET, PORT DOUGLAS

CLIENT:
GURNER

AMENDMENT		
ISSUE	DATE	DETAILS
A	19.11.20	ISSUE FOR DA

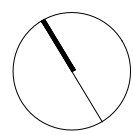
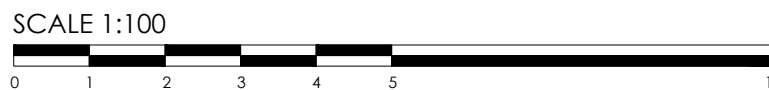
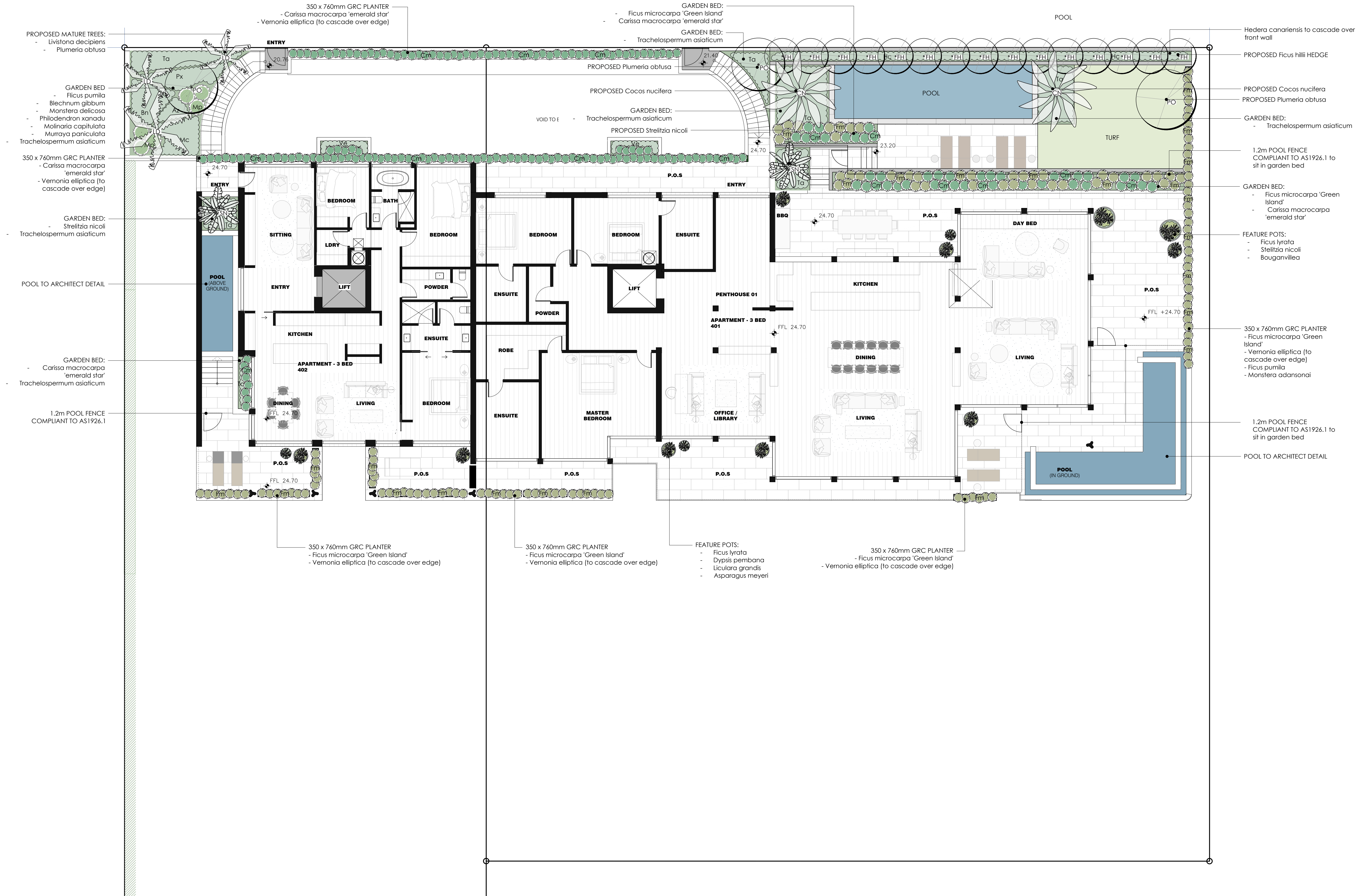
MBD MUST BE PRESENT ON-SITE FOR THE POSITIONING OF **ALL PLANTS**.
CONTACT MBD IF DISCREPANCIES OCCUR BETWEEN LANDSCAPE AND CONSULTANTS DOCUMENTS.
BUILDER TO CHECK AND VERIFY ALL DIMENSIONS ON SITE PRIOR TO CONSTRUCTION.

DRAWING:
**LANDSCAPE PLAN
LEVEL 3**



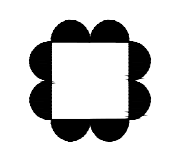
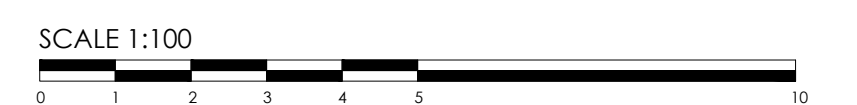
DWG No: 511_TP_16
SCALE: AS NOTED
DRAWN: RM

CHECKED: LM
ISSUE: A
THIS DRAWING IS COPYRIGHT





SOUTHERN ELEVATION
SCALE 1:100 @ A1



MYLES BALDWIN DESIGN
8 Maddison Lane, Redfern, NSW 2016 Australia
PH +61 2 9699 2622 | www.mylesbaldwin.com

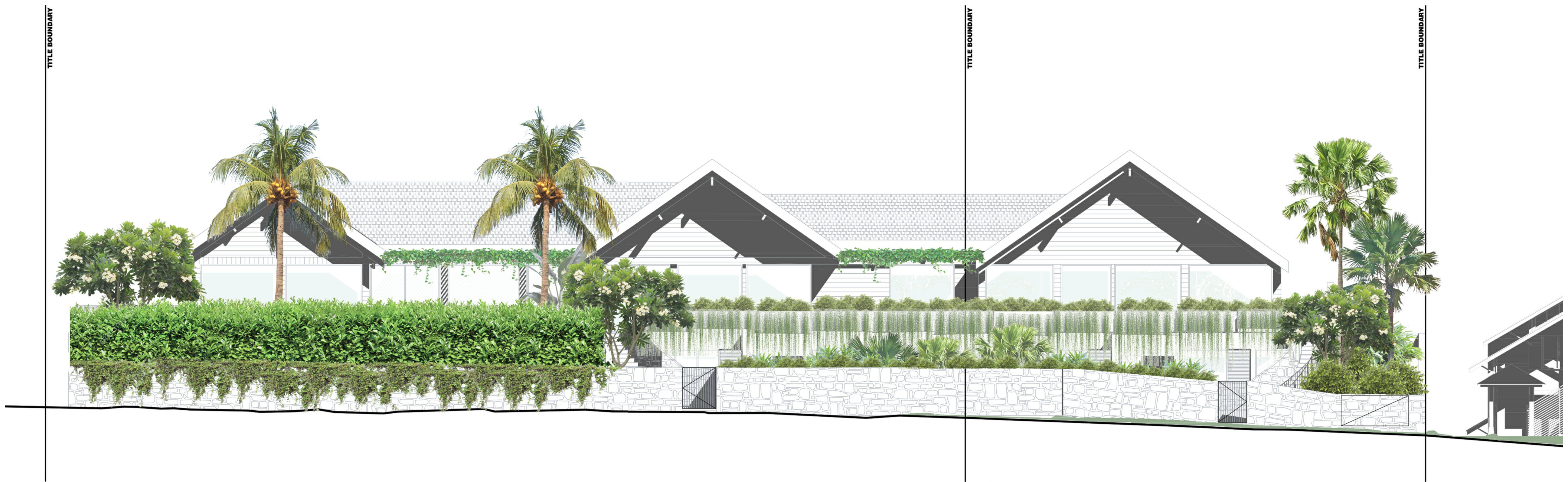
PROJECT:
69-73 MURPHY STREET, PORT DOUGLAS
CLIENT:
GURNER

AMENDMENT		
ISSUE	DATE	DETAILS
A	19.11.20	ISSUE FOR DA

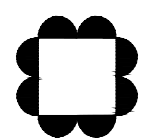
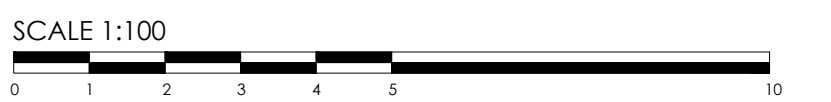
MBD MUST BE PRESENT ON-SITE FOR THE POSITIONING OF **ALL PLANTS**.
CONTACT MBD IF DISCREPANCIES OCCUR BETWEEN LANDSCAPE AND CONSULTANTS DOCUMENTS.
BUILDER TO CHECK AND VERIFY ALL DIMENSIONS ON SITE PRIOR TO CONSTRUCTION.

DRAWING:
SOUTHERN ELEVATION

DWG No: 511_TP_20
SCALE: 1:100 @ A1
DRAWN: RM
CHECKED: LM
ISSUE: A
THIS DRAWING IS COPYRIGHT



NORTHERN ELEVATION
SCALE 1:100 @ A1



MYLES BALDWIN DESIGN
8 Maddison Lane, Redfern, NSW 2016 Australia
PH +61 2 9699 2622 | www.mylesbaldwin.com

PROJECT:
69-73 MURPHY STREET, PORT DOUGLAS
CLIENT:
GURNER

AMENDMENT		
ISSUE	DATE	DETAILS
A	19.11.20	ISSUE FOR DA

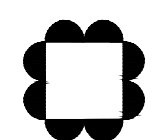
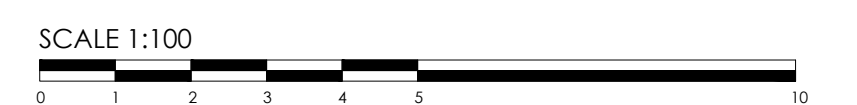
MBD MUST BE PRESENT ON-SITE FOR THE POSITIONING OF **ALL PLANTS**.
CONTACT MBD IF DISCREPANCIES OCCUR BETWEEN LANDSCAPE AND CONSULTANTS DOCUMENTS.
BUILDER TO CHECK AND VERIFY ALL DIMENSIONS ON SITE PRIOR TO CONSTRUCTION.

DRAWING:
NORTHERN ELEVATION

DWG No: S11_TP_21
SCALE: 1:100 @ A1
DRAWN: RM
CHECKED: LM
ISSUE: -
THIS DRAWING IS COPYRIGHT



WESTERN ELEVATION
SCALE 1:100 @ A1



MYLES BALDWIN DESIGN
8 Maddison Lane, Redfern, NSW 2016 Australia
PH +61 2 9699 2622 | www.mylesbaldwin.com

PROJECT:
69-73 MURPHY STREET, PORT DOUGLAS
CLIENT:
GURNER

AMENDMENT		
ISSUE	DATE	DETAILS
A	19.11.20	ISSUE FOR DA

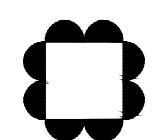
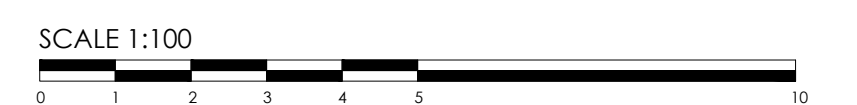
MBD MUST BE PRESENT ON-SITE FOR THE POSITIONING OF **ALL PLANTS**.
CONTACT MBD IF DISCREPANCIES OCCUR BETWEEN LANDSCAPE AND CONSULTANTS DOCUMENTS.
BUILDER TO CHECK AND VERIFY ALL DIMENSIONS ON SITE PRIOR TO CONSTRUCTION.

DRAWING:
WESTERN ELEVATION

DWG No: 511_TP_22
SCALE: 1:100 @ A1
DRAWN: RM
CHECKED: LM
ISSUE: A
THIS DRAWING IS COPYRIGHT



EASTERN ELEVATION
SCALE 1:100 @ A1



MYLES BALDWIN DESIGN
8 Maddison Lane, Redfern, NSW 2016 Australia
PH +61 2 9699 2622 | www.mylesbaldwin.com

PROJECT:
69-73 MURPHY STREET, PORT DOUGLAS
CLIENT:
GURNER

AMENDMENT		
ISSUE	DATE	DETAILS
A	19.11.20	ISSUE FOR DA

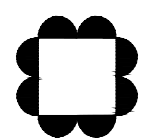
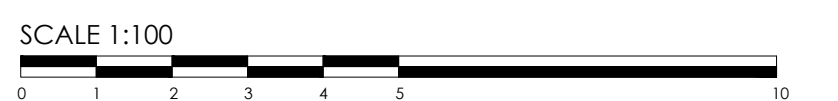
MBD MUST BE PRESENT ON-SITE FOR THE POSITIONING OF **ALL PLANTS**.
CONTACT MBD IF DISCREPANCIES OCCUR BETWEEN LANDSCAPE AND CONSULTANTS DOCUMENTS.
BUILDER TO CHECK AND VERIFY ALL DIMENSIONS ON SITE PRIOR TO CONSTRUCTION.

DRAWING:
EASTERN ELEVATION

DWG No: 511_TP_23
SCALE: 1:100 @ A1
DRAWN: RM
CHECKED: LM
ISSUE: A
THIS DRAWING IS COPYRIGHT



DRIVEWAY ELEVATION
SCALE 1:100 @ A1



MYLES BALDWIN DESIGN
8 Maddison Lane, Redfern, NSW 2016 Australia
PH +61 2 9699 2622 | www.mylesbaldwin.com

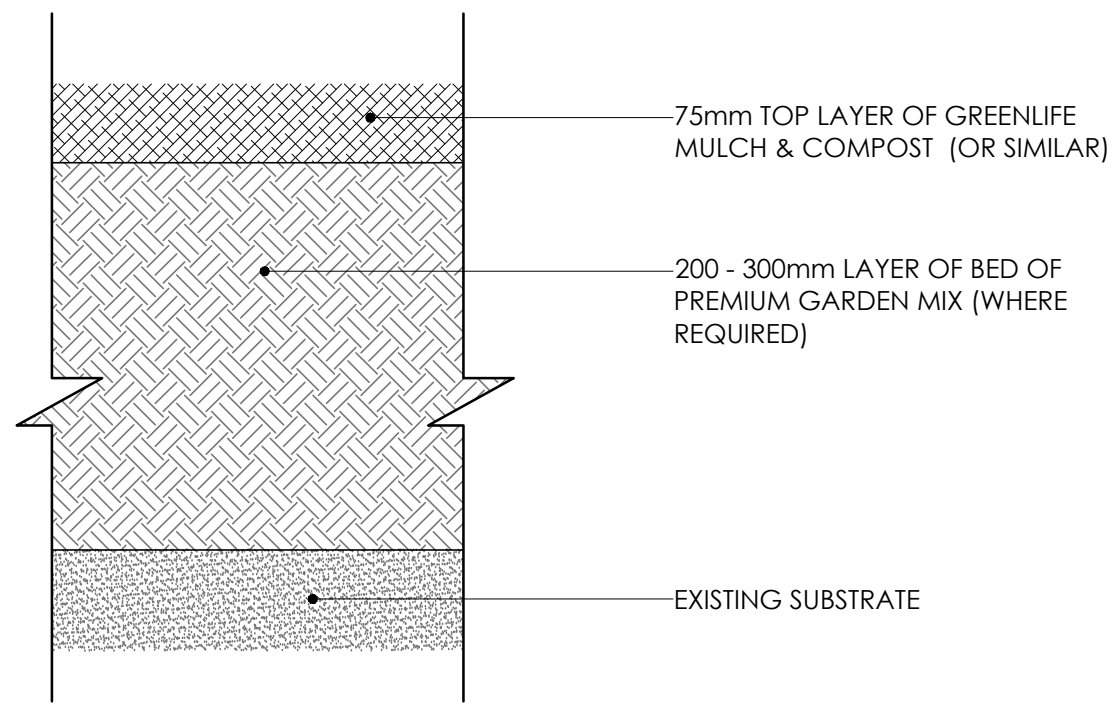
PROJECT:
69-73 MURPHY STREET, PORT DOUGLAS
CLIENT:
GURNER

AMENDMENT		
ISSUE	DATE	DETAILS
A	19.11.20	ISSUE FOR DA

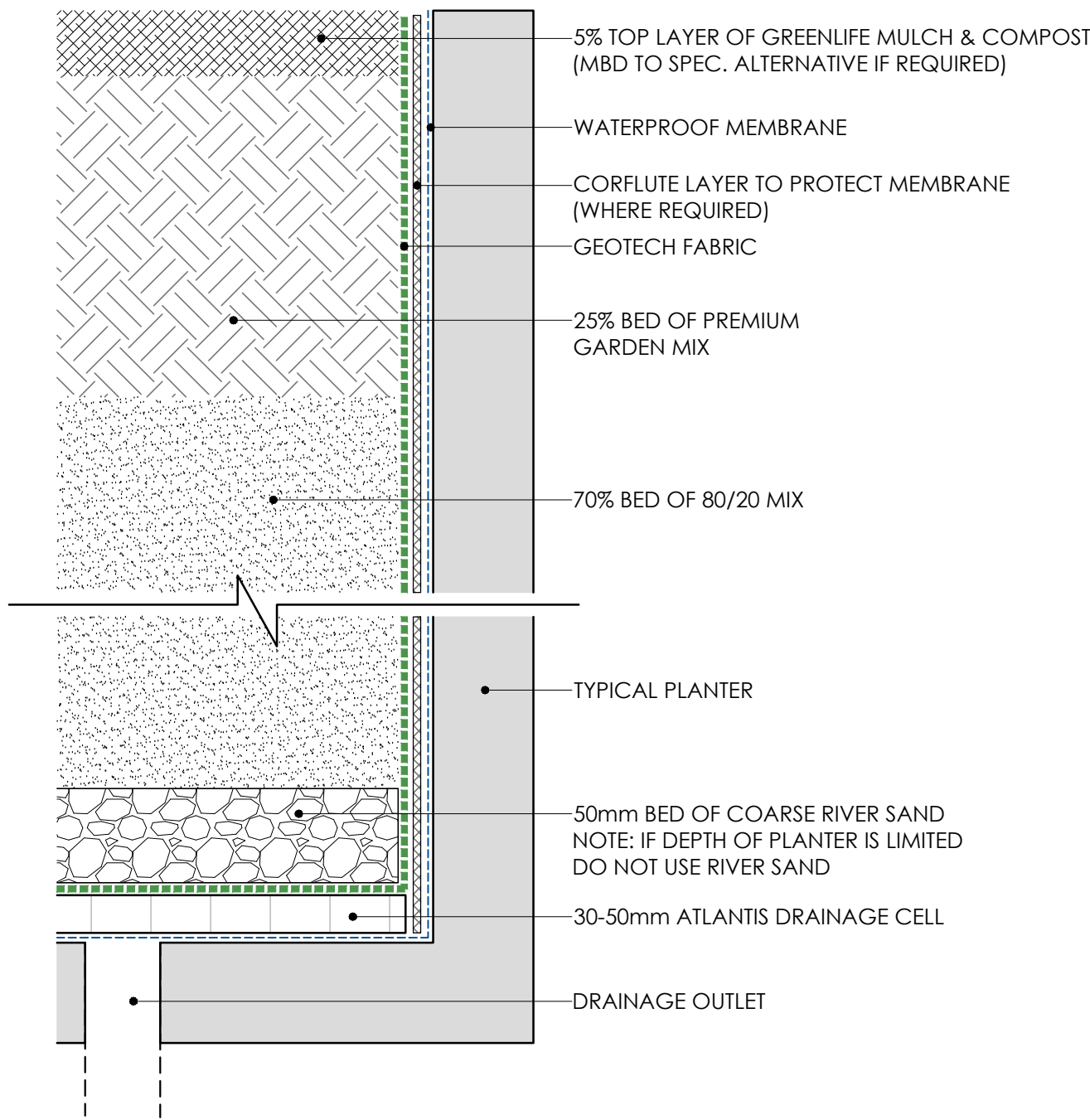
MBD MUST BE PRESENT ON-SITE FOR THE POSITIONING OF **ALL PLANTS**.
CONTACT MBD IF DISCREPANCIES OCCUR BETWEEN LANDSCAPE AND CONSULTANTS DOCUMENTS.
BUILDER TO CHECK AND VERIFY ALL DIMENSIONS ON SITE PRIOR TO CONSTRUCTION.

DRAWING:
DRIVEWAY ELEVATION

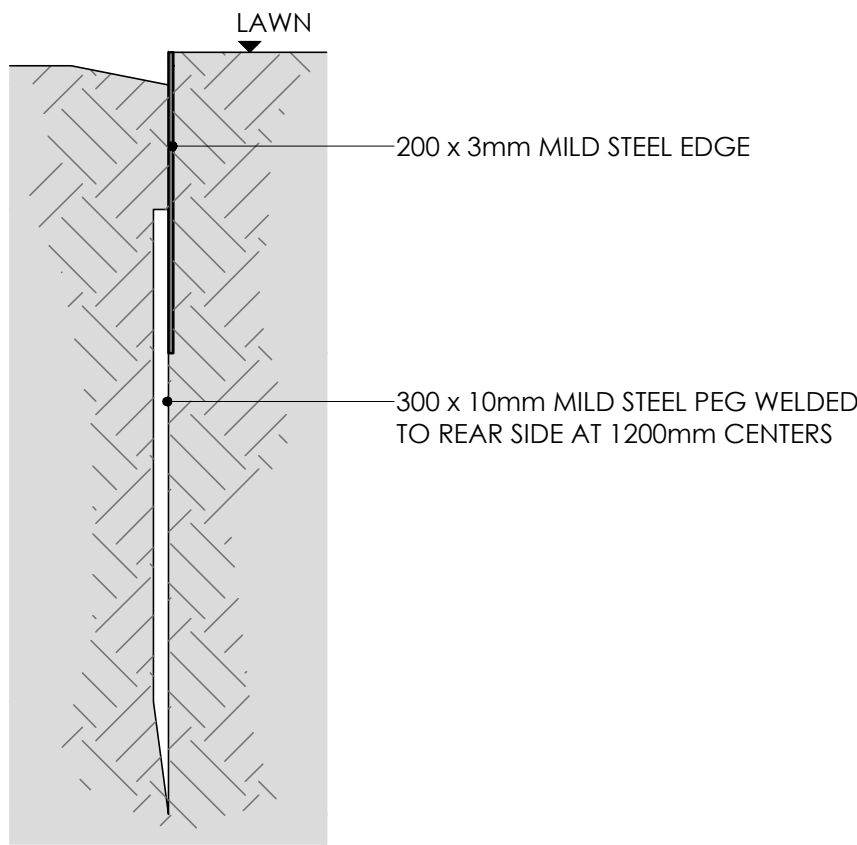
DWG No: S11_TP_24
SCALE: 1:100 @ A1
DRAWN: RM
CHECKED: LM
ISSUE: A
THIS DRAWING IS COPYRIGHT



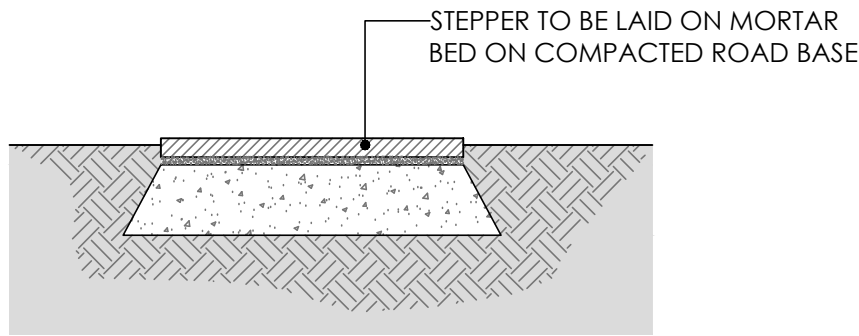
TYPICAL GARDEN SOIL PROFILE
SCALE: 1:5 @ A1



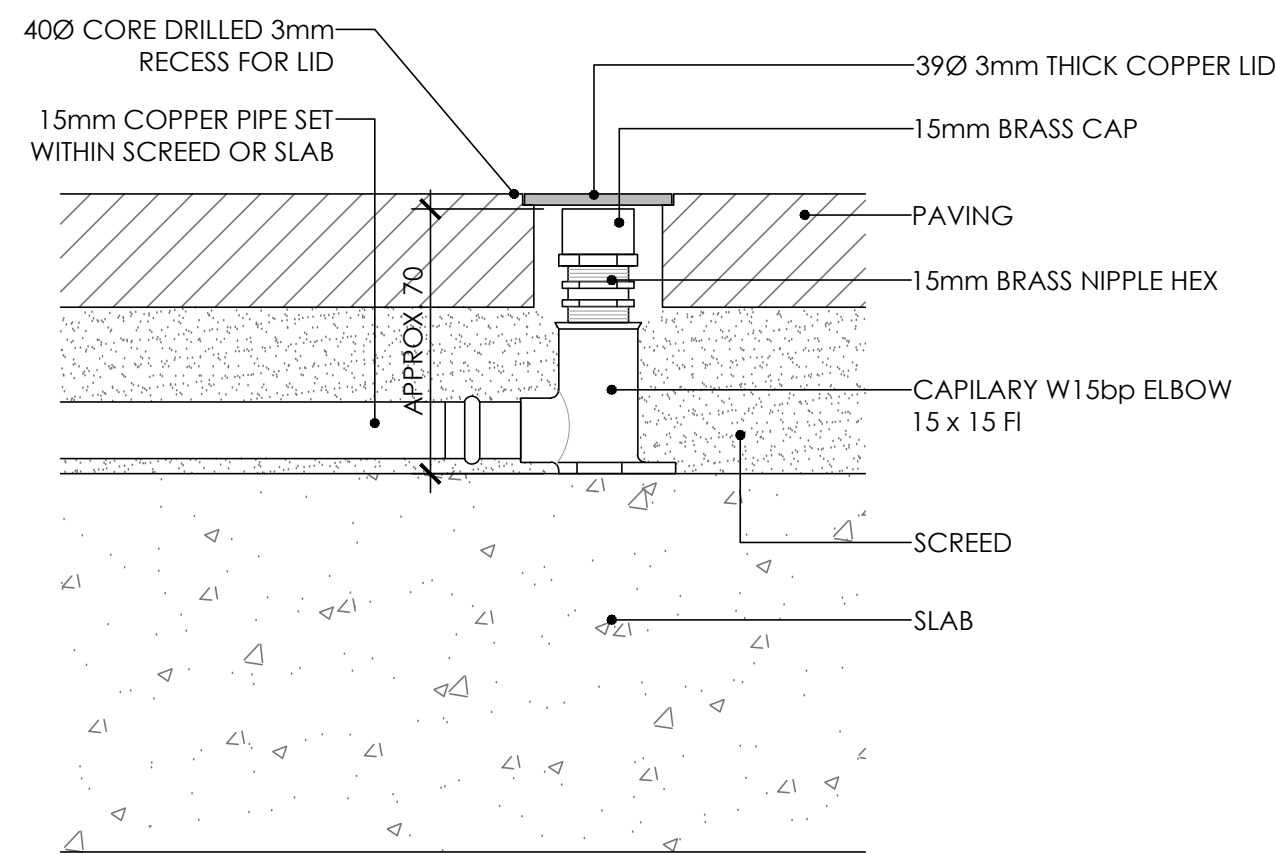
TYPICAL PLANTER SOIL PROFILE
SCALE: 1:5 @ A1



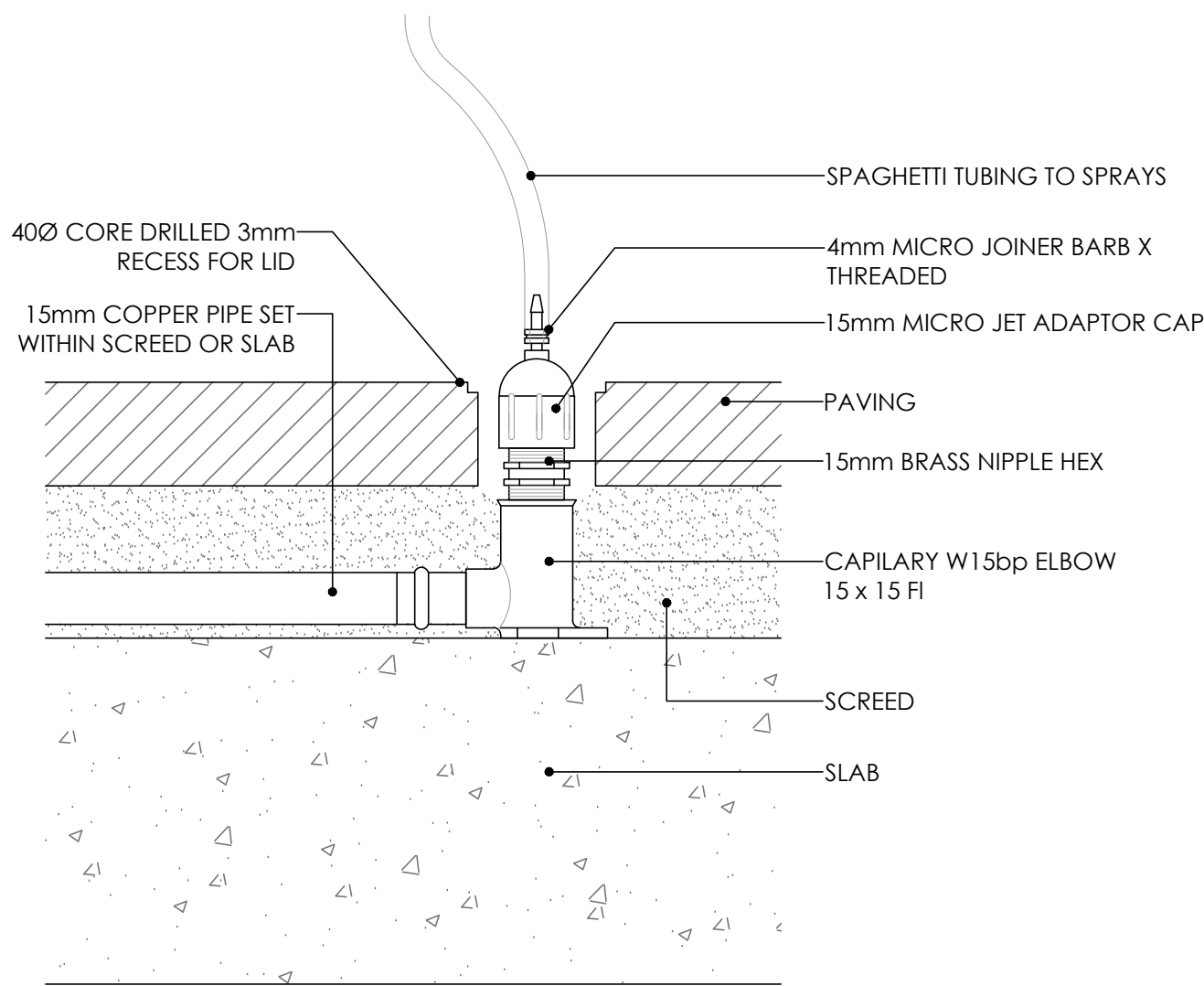
TYPICAL STEEL EDGE
SCALE 1:5 @ A1



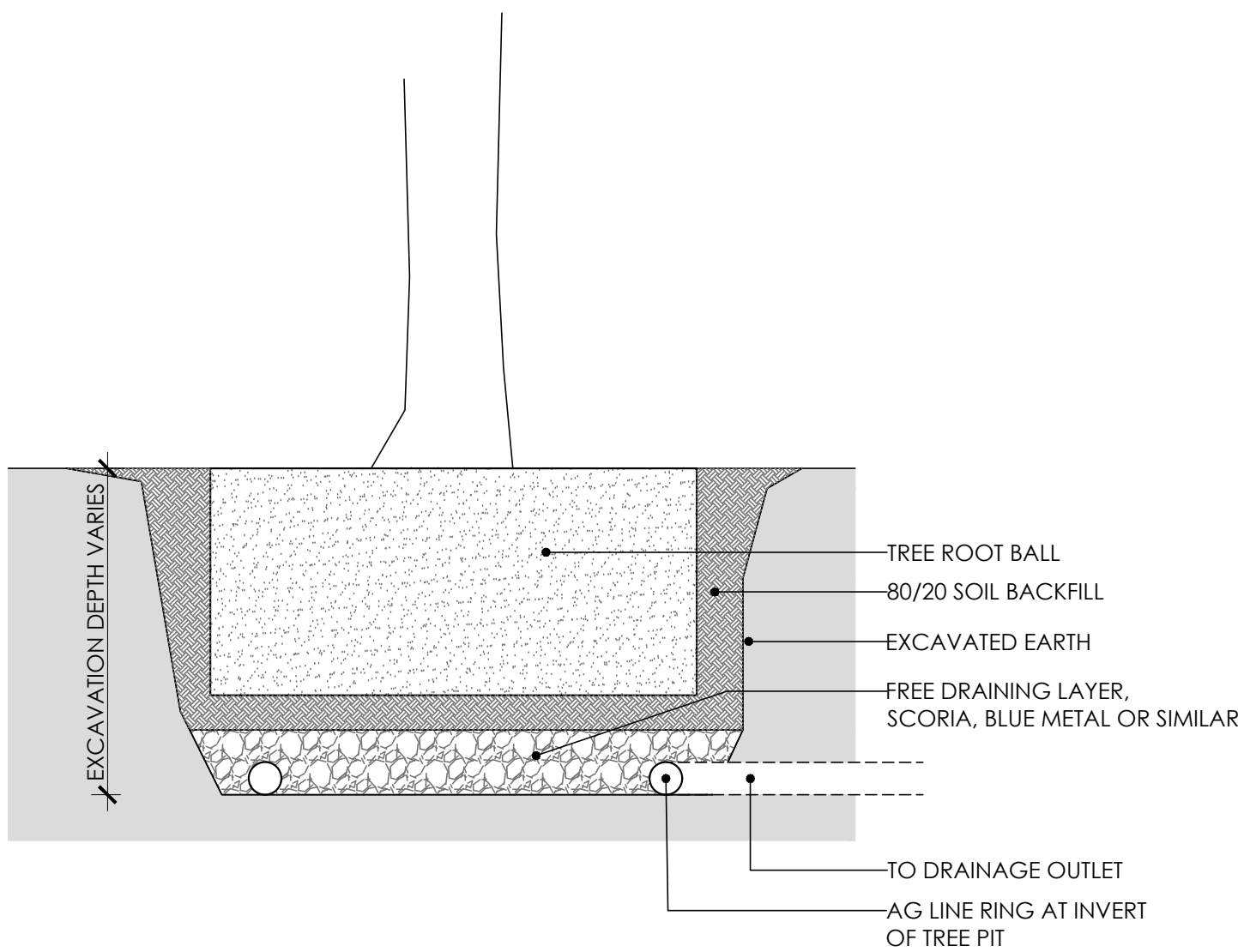
TYPICAL GARDEN STEPPER
SCALE: 1:10 @ A1



TYPICAL PAVING IRRIGATION CLOSED
SCALE 1:2 @ A1



TYPICAL PAVING IRRIGATION OPEN
SCALE 1:2 @ A1



TYPICAL TREE PIT DRAINAGE
SCALE 1:20 @ A1