

23/01/2026

File No: 202511383

Chief Executive Officer
Douglas Shire Council
PO Box 723
MOSSMAN QLD 4873

Dear Sir/Madam,

Building Works Application for a Carport located at Lot 13, 29 Barrier Street, Port Douglas QLD 4877 (13 SP144732)

Please find our Building Works application and report which demonstrates compliance with the relevant performance requirements of 2018 Douglas Shire Planning Scheme for a proposed Carport located at Lot 13, 29 Barrier Street, Port Douglas QLD 4877 (13 SP144732).

The subject property is located within the Tourist Accommodation zone under the 2018 Douglas Shire Planning Scheme. Within this zone, building work is self-assessable development, provided the development meets all the acceptable outcomes of the self-assessable criteria of the relevant Codes. As such, an assessment against the relevant acceptable outcomes has revealed one departure from the acceptable outcomes. Given the departures, the building work is deemed code assessable development requiring compliance with the applicable performance requirements.

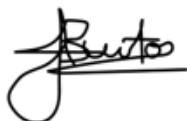
This referral agency application is in relation to the non-compliance issues with the 2018 Douglas Shire Planning Scheme:-

- 6.2.14 Tourist accommodation zone code
 - AO1 - Setbacks

Please find below our code assessment of the building work which demonstrates compliance with the applicable performance criteria.

If you have any queries or require any additional information, please do not hesitate to contact Jess Burton on 07 4222 9899.

Yours sincerely



Building Certifier: Jess Burton
QBCC Accreditation No: A15316233

6.2.14 Tourist accommodation zone code

6.2.14.1 Application

- (1) This code applies to assessing development in the Tourist accommodation zone.
- (2) When using this code, reference should be made to Part 5.

6.2.14.2 Purpose

- (1) The purpose of the Tourist accommodation zone code is to provide for short-term accommodation supported by community uses and small-scale services and facilities in locations where there are tourist attractions.
- (2) The local government purpose of the code is to:
 - (a) implement the policy direction set in the Strategic Framework, in particular:
 - (i) Theme 4 : Strong communities and identity, Element 3.7.4 – Sense of place, community and identity.
 - (ii) Theme 5 – Economy, Element 3.8.2 – Economic growth and diversification, Element 3.8.2 – Tourism.
 - (b) provide for tourist accommodation development to establish in areas close to commercial and recreational services and facilities.
- (3) The purpose of the code will be achieved through the following overall outcomes:
 - (a) A range of accommodation activities, with an emphasis on short-term accommodation is established at a scale and density to service tourist needs.
 - (b) Tourist development is of an appropriate scale and achieves an attractive built form which incorporates the character and natural attributes of the site and the surrounding area as integral features of the theme and design of the development.
 - (c) Development facilitates opportunities for establishing tourist facilities and services within, or adjacent to, tourist accommodation to complement the tourist accommodation and enhance the attractiveness of tourist areas.
 - (d) Development is designed to take into account the tropical climate by incorporating appropriate architectural elements and design features.
 - (e) Landscaping of tourist development is of a high quality and contributes to the visual dominance of tropical vegetation and the local streetscape.
 - (f) Community facilities, open space and recreational areas and appropriate infrastructure to support the needs of the local community are provided.

6.2.14.3 Criteria for assessment

Table 6.2.14.3.a – Tourist accommodation zone code – assessable development

Performance outcomes	Acceptable outcomes	Applicant Response
For self-assessable and assessable development		

<p>PO1 The height of all buildings and structures must be in keeping with the residential character of the area.</p>	<p>AO1 Buildings and structures are not more than 13.5 metres and 3 storeys in height.</p> <p>Note – Height is inclusive of roof height.</p>	
Setbacks (other than for a dwelling house)		
<p>PO1 Buildings are setback to:</p> <ul style="list-style-type: none"> (a) maintain the character and amenity of the area; (b) achieve separation from neighbouring buildings and from road frontages. 	<p>AO1 Buildings are setback:</p> <ul style="list-style-type: none"> (a) a minimum of 6 metres from the main street frontage; (b) a minimum of 4 metres from any secondary street frontage; (c) 4.5 metres from a rear boundary; (d) 2 metres from a side or an average of half of the height of the building at the side setback, whichever is the greater. 	<p>Non Compliance with AO1</p> <p>The proposed development does not comply with Acceptable Outcome AO1(c), which requires a minimum setback of 4.5 metres from the rear boundary, nor Acceptable Outcome AO1(b), which requires a minimum setback of 4 metres from a secondary street frontage.</p> <p>Notwithstanding these variations, the proposal achieves the intent of Performance Outcome PO1 by maintaining the character and amenity of the area and providing appropriate separation from neighbouring development and road frontages.</p> <p>The proposed structure is an open-sided carport located to the rear of the lot and positioned behind the primary dwelling. As a subordinate, low-scale structure, it is clearly secondary in form and function and does not present as a dominant element when viewed from either the adjoining rear property or the secondary street frontage.</p> <p>The rear adjoining property is predominantly utilised as yard area. The reduced rear setback will not result in adverse amenity impacts, as the carport does not contain habitable rooms, does not generate overlooking or noise, and will not unreasonably affect access to daylight or ventilation. The open-sided design provides visual permeability, reducing bulk and minimising any perception of enclosure to the adjoining rear lot.</p> <p>As the subject site is a corner lot, the carport's orientation to the secondary street frontage is mitigated by its rearward location behind the dwelling and its open design. The reduced secondary street setback maintains adequate spatial separation to the road reserve, preserves streetscape character, and</p>

		<p>ensures that sightlines and pedestrian safety are not compromised.</p> <p>Overall, the proposed setbacks are considered appropriate given the site configuration, the subordinate nature of the structure, and the absence of amenity or streetscape impacts. The development therefore satisfies the intent of Performance Outcome PO1, despite the non-compliance with Acceptable Outcomes AO1(b) and AO1(c).</p>
--	--	------------------------------------------------------------------------------------------------------------------------------------------------------------------------------------------------------------------------------------------------------------------------------------------------------------------------------------------------------------------------------------------------------------------------

Performance outcomes	Acceptable outcomes	Applicant Response
Site coverage (other than for a dwelling house)		
<p>PO2 The site coverage of all buildings does not result in a built form that is bulky or visually obtrusive.</p>	<p>AO2 The site coverage of any building is limited to 50%</p>	<p>Complies</p>
Building proportions and scale (other than for a dwelling house)		
<p>PO3 The proportions and scale of any development are in character with the area and local streetscape.</p>	<p>AO3.1 The overall length of a building does not exceed 30 metres and the overall length of any continuous wall does not exceed 15 metres.</p> <p>AO3.2 Balconies, patios and similar spaces are not enclosed or capable of being enclosed and used as a habitable room.</p> <p>AO3.3 Balconies, patios and similar spaces are designed to be open and light weight in appearance with a maximum of 20% of the façade being fully enclosed.</p> <p>AO3.4 Roof forms, materials and colours of buildings enhance the amenity of the street and locality, including: (a) the roofs of buildings are light coloured and non-reflecting; (b) white and shining metallic finishes are avoided on external surfaces in prominent view.</p> <p>Note – The building incorporates building design features and architectural elements detailed in Planning scheme policy SC 6.2 – Building design and architectural elements.</p>	<p>Complies</p>

Landscaping (other than for a dwelling house)		
<p>PO4 Landscape planting is provided for the recreational amenity of residents/guests and incorporates dominant tropical vegetation which enhances the streetscape and the amenity of the area.</p>	<p>AO4.1 A minimum of 35% of the site is provided as open space and recreation area with a minimum of 30% of this total; area provided for landscape planting.</p> <p>AO4.2 Within the frontage setback area, a minimum width of 2 metres of landscape area includes a minimum 75% dense planting.</p> <p>AO4.3 Within the side and rear setback areas, a minimum width of 1.5 metres of landscape area includes 75% dense planting.</p>	<p>Not applicable</p>

Performance outcomes	Acceptable outcomes	Applicant Response
For assessable development		
PO5 The establishment of uses is consistent with the outcomes sought for the Tourist accommodation zone and protects the zone from the intrusion of inconsistent uses.	A05 Inconsistent uses as identified in Table 6.2.14.3.b are not established in the Tourist accommodation zone.	Not applicable
PO6 Development is located, designed, operated and managed to respond to the characteristics, features and constraints of the site and surrounds. Note – Planning scheme policy – Site assessments provides guidance on identifying the characteristics, features and constraints of a site and its surrounds.	A06 No acceptable outcomes are prescribed.	Not applicable
PO7 Development does not adversely affect the tropical, tourist and residential character and amenity of the area in terms of traffic, noise, dust, odour, lighting or other physical or environmental impacts.	A07 No acceptable outcomes are prescribed.	Not applicable
PO8 Any loading/unloading areas, servicing areas and outdoor storage areas are screened from public view or adjacent sensitive uses.	A08 Outdoor loading/unloading, servicing and storage areas are sited or screened so they are: (a) not visible from any off-site public place; (b) not located adjacent to premises used for sensitive uses.	Not applicable

<p>PO9 Tourist developments include recreational and ancillary services and facilities for the enjoyment of guests.</p>	<p>AO9.1 Development which includes accommodation for tourists incorporates a mix of the following recreational and ancillary services and facilities:</p> <ul style="list-style-type: none">(a) swimming pools;(b) tennis courts;(c) barbecue areas;(d) outdoor lounging / recreation areas;(e) restaurants / bars;(f) tourist-focussed shopping;(g) tour booking office;(h) spa / health clubs. <p>AO9.2 Any commercial services or facilities incorporated into a tourist development are small scale and predominantly service in-house guests only.</p> <p>AO9.3 Where a commercial service or facility offers services to persons over and above in-house guests, the commercial component provides on-site car parking for 50% of the floor area available for use in accordance with the relevant requirements of the Parking and access code.</p>	<p>Not applicable</p>
<p>PO10 New lots contain a minimum area of 1000m².</p>	<p>AO10 No acceptable outcomes are prescribed.</p>	<p>Not applicable</p>

Performance outcomes	Acceptable outcomes	Applicant Response
PO11 New lots have a minimum road frontage of 20 metres.	AO11 No acceptable outcomes are prescribed.	Not applicable
PO12 New lots contain a 25 metre x 20 metre rectangle.	AO12 No acceptable outcomes are prescribed.	Not applicable

Table 6.2.14.3.b — Inconsistent uses within the Tourist accommodation zone

Inconsistent uses		
<ul style="list-style-type: none"> • Adult store • Agricultural supplies store • Air services • Animal husbandry • Animal keeping • Aquaculture • Brothel • Bulk landscape supplies • Cropping • Detention facility • Extractive industry • Funeral parlour • Garden centre • Hardware and trade supplies • Health care services • High impact industry • Indoor sport and recreation • Intensive animal industry 	<ul style="list-style-type: none"> • Intensive horticulture • Landing • Low impact industry • Major electricity infrastructure • Major sport, recreation and entertainment facility • Marine industry • Market • Medium impact industry • Motor sport facility • Nightclub entertainment facility • Office • Outdoor sales • Outdoor sport and recreation • Outstation • Park • Parking station 	<ul style="list-style-type: none"> • Permanent plantation • Port services • Renewable energy facility • Roadside stall • Rural industry • Rural workers accommodation • Service station • Shopping centre • Showroom • Special industry • Substation • Theatre • Transport depot • Veterinary services • Warehouse • Wholesale nursery • Winery

Note – This table does not imply that all other uses not listed in the table are automatically consistent uses within the zone. Assessable development must still demonstrate consistency through the assessment process.

8.2.2 Bushfire hazard overlay code

Note - Land shown on the bushfire hazard overlay map is designated as the bushfire prone area for the purposes of section 12 of the Building Regulations 2006. The bushfire hazard area (bushfire prone area) includes land covered by the high and medium hazard areas as well as the buffer area category on the overlay map.

8.2.2.1 Application

- (1) This code applies to assessing a material change of use, reconfiguring a lot, operational works or building work in the Bushfire hazard overlay, if:
 - (a) self-assessable or assessable where the code is identified as being applicable in the Assessment criteria for the Overlay Codes contained in the Levels of Assessment Tables in section 5.6;
 - (b) impact assessable development.
- (2) Land in the Bushfire hazard overlay is identified on the Bushfire hazard overlay map in Schedule 2 and includes the following sub-categories:
 - (a) Medium bushfire risk sub-category;
 - (b) High bushfire risk sub-category;
 - (c) Very high bushfire risk sub-category;
 - (d) Potential impact buffer sub-category.
- (3) When using this code, reference should be made to Part 5.

8.2.2.2 Purpose

- (1) The purpose of the Bushfire overlay code is to:
 - (a) implement the policy direction in the Strategic Framework, in particular:
 - (i) Theme 1 Settlement pattern: Element 3.4.7 Mitigation of hazards;
 - (ii) Theme 6 Infrastructure and transport: Element 3.9.2 Energy.
 - (b) enable an assessment of whether development is suitable on land within the Bushfire risk overlay sub-categories.
- (2) The purpose of the code will be achieved through the following overall outcomes:
 - (a) development avoids the establishment or intensification of vulnerable activities within or near areas that are subject to bushfire hazard;
 - (b) development is designed and located to minimise risks to people and property from bushfires;
 - (c) bushfire risk mitigation treatments are accommodated in a manner that avoids or minimises impacts on the natural environment and ecological processes;
 - (d) development involving the manufacture or storage of hazardous materials does not increase the risk to public safety or the environment in a bushfire event;
 - (e) development contributes to effective and efficient disaster management response and recovery capabilities.

Note - A site based assessment may ground-truth the extent of hazardous vegetation and extent and nature of the bushfire hazard area (bushfire prone area). Such assessments should be undertaken using the methodology set out in Planning scheme policy SC6.9 - Natural Hazards.

8.2.2.3 Criteria for assessment

Table 8.2.2.3.a – Bushfire hazard overlay code –assessable development

Performance outcomes	Acceptable outcomes	Applicant Response
For self-assessable and assessable development		
Compatible development		
<p>PO1 A vulnerable use is not established or materially intensified within a bushfire hazard area (bushfire prone area) unless there is an overriding need or other exceptional circumstances.</p> <p>Note - See the end of this code for examples of vulnerable uses.</p>	<p>AO1 Vulnerable uses are not established or expanded.</p> <p>Note – Where, following site inspection and consultation with Council, it is clear that the mapping is in error in identifying a premises as being subject to a medium, high, very high bushfire hazard or potential impact buffer sub-category, Council may supply a letter exempting the need for a Bushfire Management Plan.</p> <p>Note – Where the assessment manager has not previously approved a Bushfire Management Plan (either by condition of a previous development approval), the development proponent will be expected to prepare such a plan.</p> <p>Note – Planning scheme policy SC6.9 - Natural hazards, provides a guide to the preparation of a Bushfire Management Plan.</p>	<p>The subject site is affected by the Bushfire Hazard Overlay. The proposed development comprises an open-sided carport, which is a non-habitable, ancillary structure and does not constitute a vulnerable use as defined under the Bushfire Hazard Overlay Code.</p> <p>The proposal does not increase the intensity of use of the site, does not introduce habitable accommodation, and does not result in an increased risk to people in the event of a bushfire. Due to the open nature of the structure and its function as a Class 10a building, the development does not trigger the need for bushfire separation distances, a Bushfire Management Plan, or additional mitigation measures.</p> <p>Accordingly, the proposal is considered to be consistent with the intent of the Bushfire Hazard Overlay Code and will not adversely affect bushfire risk or emergency management outcomes.</p>
<p>PO2 Emergency services and uses providing community support services are able to function effectively during and immediately after a bushfire hazard event.</p>	<p>AO2 Emergency Services and uses providing community support services are not located in a bushfire hazard sub-category and have direct access to low hazard evacuation routes.</p>	<p>Not applicable</p>
<p>PO3 Development involving hazardous materials manufactured or stored in bulk is not located in bushfire hazard sub-category.</p>	<p>AO3 The manufacture or storage of hazardous material in bulk does not occur within bushfire hazard sub-category.</p>	<p>Not applicable</p>



Development design and separation from bushfire hazard – reconfiguration of lots		
<p>PO4.1 Where reconfiguration is undertaken in an urban area or is for urban purposes or smaller scale rural residential purposes, a separation distance from hazardous vegetation is provided to achieve a radiant heat flux level of 29kW/m² at the edge of the proposed lot(s).</p> <p>Note - "Urban purposes" and "urban area" are defined in the <i>Sustainable Planning Regulations 2009</i>. Reconfiguration will be taken to be for rural residential purposes where proposed lots are between 2000m² and 2ha in area. "Smaller scale" rural residential purposes will be taken to be where the average proposed lot size is 6000m² or less.</p> <p>Note - The radiant heat levels and separation distances are to be established in accordance with method 2 set out in AS3959-2009.</p> <p>PO4.2 Where reconfiguration is undertaken for other purposes, a building envelope of reasonable dimensions is provided on each lot which achieves radiant heat flux level of 29kW/m² at any point.</p>	<p>AO4.1 No new lots are created within a bushfire hazard sub-category.</p> <p>or</p> <p>AO4.2 Lots are separated from hazardous vegetation by a distance that:</p> <p>(a) achieves radiant heat flux level of 29kW/m² at all boundaries; and</p> <p>(b) is contained wholly within the development site.</p> <p>Note - Where a separation distance is proposed to be achieved by utilising existing cleared developed areas external to the site, certainty must be established (through tenure or other means) that the land will remain cleared of hazardous vegetation.</p> <p>For staged developments, temporary separation distances, perimeter roads or fire trails may be absorbed as part of subsequent stages.</p> <p>Note - The achievement of a cleared separation distance may not be achievable where other provisions within the planning scheme require protection of certain ecological, slope, visual or character features or functions.</p>	<p>Not applicable</p>



Performance outcomes	Acceptable outcomes	Applicant Response
<p>PO5 Where reconfiguration is undertaken in an urban area or is for urban purposes, a constructed perimeter road with reticulated water supply is established between the lots and the hazardous vegetation and is readily accessible at all times for urban fire fighting vehicles.</p> <p>The access is available for both fire fighting and maintenance/defensive works.</p>	<p>AO5.1 Lot boundaries are separated from hazardous vegetation by a public road which:</p> <ul style="list-style-type: none"> (a) has a two lane sealed carriageway; (b) contains a reticulated water supply; (c) is connected to other public roads at both ends and at intervals of no more than 500m; (d) accommodates geometry and turning radii in accordance with Queensland Fire and Emergency Services' Fire Hydrant and Vehicle Access Guidelines; (e) has a minimum of 4.8m vertical clearance above the road; (f) is designed to ensure hydrants and water access points are not located within parking bay allocations; and (g) incorporates roll-over kerbing. <p>AO5.2 Fire hydrants are designed and installed in accordance with AS2419.1 2005, unless otherwise specified by the relevant water entity.</p> <p>Note - Applicants should have regard to the relevant standards set out in the reconfiguration of a lot code and works codes in this planning scheme.</p>	<p>Not applicable</p>



<p>PO6 Where reconfiguration is undertaken for smaller scale rural residential purposes, either a constructed perimeter road or a formed, all weather fire trail is established between the lots and the hazardous vegetation and is readily accessible at all times for the type of fire fighting vehicles servicing the area.</p> <p>The access is available for both fire fighting and maintenance/hazard reduction works.</p>	<p>AO6 Lot boundaries are separated from hazardous vegetation by a public road or fire trail which has:</p> <ul style="list-style-type: none">(a) a reserve or easement width of at least 20m;(b) a minimum trafficable (cleared and formed) width of 4m capable of accommodating a 15 tonne vehicle and which is at least 6m clear of vegetation;(c) no cut or fill embankments or retaining walls adjacent to the 4m wide trafficable path;(d) a minimum of 4.8m vertical clearance;(e) turning areas for fire-fighting appliances in accordance with Queensland Fire and Emergency Services' Fire Hydrant and Vehicle Access Guidelines;(f) a maximum gradient of 12.5%;(g) a cross fall of no greater than 10 degrees;(h) drainage and erosion control devices in accordance with the standards prescribed in a planning scheme policy;(i) vehicular access at each end which is connected to the public road network at intervals of no more than 500m;(j) designated fire trail signage;(k) if used, has gates locked with a system authorised by Queensland Fire and Emergency Services; and(l) if a fire trail, has an access easement that is granted in favour of Council and Queensland Fire and Emergency Services.	<p>Not applicable</p>
----------------------------------------------------------------------------------------------------------------------------------------------------------------------------------------------------------------------------------------------------------------------------------------------------------------------------------------------------------------------------------------------------------------------------------------------	-------------------------------------------------------------------------------------------------------------------------------------------------------------------------------------------------------------------------------------------------------------------------------------------------------------------------------------------------------------------------------------------------------------------------------------------------------------------------------------------------------------------------------------------------------------------------------------------------------------------------------------------------------------------------------------------------------------------------------------------------------------------------------------------------------------------------------------------------------------------------------------------------------------------------------------------------------------------------------------------------------------------------------------------------------------------------------------------------------------------------------------------------------------------------------------------------------------------------------------------------------------------------------------------------------------------------------------------------------------	------------------------------



Performance outcomes	Acceptable outcomes	Applicant Response
<p>PO7 Where reconfiguration is undertaken for other purposes, a formed, all weather fire trail is provided between the hazardous vegetation and either the lot boundary or building envelope, and is readily accessible at all times for the type of fire fighting vehicles servicing the area.</p> <p>However, a fire trail will not be required where it would not serve a practical fire management purpose.</p>	<p>A07 Lot boundaries are separated from hazardous vegetation by a public road or fire trail which has:</p> <ul style="list-style-type: none"> (a) a reserve or easement width of at least 20m; (b) a minimum trafficable (cleared and formed) width of 4m capable of accommodating a 15 tonne vehicle and which is at least 6m clear of vegetation; (c) no cut or fill embankments or retaining walls adjacent to the 4m wide trafficable path; (d) a minimum of 4.8m vertical clearance; (e) turning areas for fire-fighting appliances in accordance with Queensland Fire and Emergency Services' Fire Hydrant and Vehicle Access Guidelines; (f) a maximum gradient of 12.5%; (g) a cross fall of no greater than 10 degrees; (h) drainage and erosion control devices in accordance with the standards prescribed in a planning scheme policy; (i) vehicular access at each end which is connected to the public road network; (j) designated fire trail signage; (k) if used, has gates locked with a system authorised by Queensland Fire and Emergency Services; and (l) if a fire trail, has an access easement that is granted in favour of Council and Queensland Fire and Emergency Services. 	<p>Not applicable</p>



<p>PO8 The development design responds to the potential threat of bushfire and establishes clear evacuation routes which demonstrate an acceptable or tolerable risk to people.</p>	<p>AO8 The lot layout:</p> <ul style="list-style-type: none"> (a) minimises the length of the development perimeter exposed to, or adjoining hazardous vegetation; (b) avoids the creation of potential bottle-neck points in the movement network; (c) establishes direct access to a safe assembly /evacuation area in the event of an approaching bushfire; and (d) ensures roads likely to be used in the event of a fire are designed to minimise traffic congestion. <p>Note - For example, developments should avoid finger-like or hour-glass subdivision patterns or substantive vegetated corridors between lots.</p> <p>In order to demonstrate compliance with the performance outcome, a bushfire management plan prepared by a suitably qualified person may be required. The bushfire management plan should be developed in accordance with the Public Safety Business Agency (PSBA) guideline entitled "Undertaking a Bushfire Protection Plan. Advice from the Queensland Fire and Emergency Services (QFES) should be sought as appropriate</p>	<p>Not applicable</p>
<p>PO9 Critical infrastructure does not increase the potential bushfire hazard.</p>	<p>AO9 Critical or potentially hazardous infrastructure such as water supply, electricity, gas and telecommunications are placed underground.</p>	<p>Not applicable</p>



Performance outcomes	Acceptable outcomes	Applicant Response
Development design and separation from bushfire hazard – material change of use		
<p>PO10 Development is located and designed to ensure proposed buildings or building envelopes achieve a radiant heat flux level at any point on the building or envelope respectively, of: (a) 10kW/m² where involving a vulnerable use; or (b) 29kW/m² otherwise.</p> <p>The radiant heat flux level is achieved by separation unless this is not practically achievable.</p> <p>Note - The radiant heat levels and separation distances are to be established in accordance with method 2 set out in AS3959-2009.</p>	<p>AO10 Buildings or building envelopes are separated from hazardous vegetation by a distance that: (a) achieves a radiant heat flux level of at any point on the building or envelope respectively, of 10kW/m² for a vulnerable use or 29kW/m² otherwise; and (b) is contained wholly within the development site.</p> <p>Note - Where a separation distance is proposed to be achieved by utilising existing cleared developed areas external to the site, certainty must be established (through tenure or other means) that the land will remain cleared of hazardous vegetation.</p> <p>For staged developments, temporary separation distances, perimeter roads or fire trails may be absorbed as part of subsequent stages.</p> <p>Note - The achievement of a cleared separation distance may not be achievable where other provisions within the planning scheme require protection of certain ecological, slope, visual or character features or functions.</p>	<p>Not applicable</p>



<p>PO11 A formed, all weather fire trail is provided between the hazardous vegetation and the site boundary or building envelope, and is readily accessible at all times for the type of fire fighting vehicles servicing the area.</p> <p>However, a fire trail will not be required where it would not serve a practical fire management purpose.</p> <p>Note - Fire trails are unlikely to be required where a development site involves less than 2.5ha</p>	<p>AO11 Development sites are separated from hazardous vegetation by a public road or fire trail which has:</p> <ul style="list-style-type: none">(a) a reserve or easement width of at least 20m;(b) a minimum trafficable (cleared and formed) width of 4m capable of accommodating a 15 tonne vehicle and which is at least 6m clear of vegetation;(c) no cut or fill embankments or retaining walls adjacent to the 4m wide trafficable path;(d) a minimum of 4.8m vertical clearance;(e) turning areas for fire-fighting appliances in accordance with Queensland Fire and Emergency Services' Fire Hydrant and Vehicle Access Guidelines;(f) a maximum gradient of 12.5%;(g) a cross fall of no greater than 10 degrees;(h) drainage and erosion control devices in accordance with the standards prescribed in a planning scheme policy;(i) vehicular access at each end which is connected to the public road network which is connected to the public road network at intervals of no more than 500m;(j) designated fire trail signage;(k) if used, has gates locked with a system authorised by Queensland Fire and Emergency Services; and(l) if a fire trail, has an access easement that is granted in favour of Council and Queensland Fire and Emergency Services.	<p>Not applicable</p>
----------------------------------------------------------------------------------------------------------------------------------------------------------------------------------------------------------------------------------------------------------------------------------------------------------------------------------------------------------------------------------------------------------------------------------------------------------------------------	---------------------------------------------------------------------------------------------------------------------------------------------------------------------------------------------------------------------------------------------------------------------------------------------------------------------------------------------------------------------------------------------------------------------------------------------------------------------------------------------------------------------------------------------------------------------------------------------------------------------------------------------------------------------------------------------------------------------------------------------------------------------------------------------------------------------------------------------------------------------------------------------------------------------------------------------------------------------------------------------------------------------------------------------------------------------------------------------------------------------------------------------------------------------------------------------------------------------------------------------------------------------------------------------------------------------------------------------------------------------------------------------------------------	------------------------------



Performance outcomes	Acceptable outcomes	Applicant Response
All development		
PO12 All premises are provided with vehicular access that enables safe evacuation for occupants and easy access by fire fighting appliances.	AO12 Private driveways: (a) do not exceed a length of 60m from the street to the building; (b) do not exceed a gradient of 12.5%; (c) have a minimum width of 3.5m; (d) have a minimum of 4.8m vertical clearance; (e) accommodate turning areas for fire-fighting appliances in accordance with Queensland Fire and Emergency Services' Fire Hydrant and Vehicle Access Guidelines; and (f) serve no more than 3 dwellings or buildings.	Not applicable



<p>PO13 Development outside reticulated water supply areas includes a dedicated static supply that is available solely for fire fighting purposes and can be accessed by fire fighting appliances.</p>	<p>AO13 A water tank is provided within 10m of each building (other than a class 10 building) which:</p> <ul style="list-style-type: none"> (a) is either below ground level or of non-flammable construction; (b) has a take off connection at a level that allows the following dedicated, static water supply to be left available for access by fire fighters: <ul style="list-style-type: none"> (i) 10,000l for residential buildings <p>Note – A minimum of 7,500l is required in a tank and the extra 2,500l may be in the form of accessible swimming pools or dams.</p> <ul style="list-style-type: none"> (ii) 45,000l for industrial buildings; and (iii) 20,000l for other buildings; (c) includes shielding of tanks and pumps in accordance with the relevant standards; (d) includes a hardstand area allowing medium rigid vehicle (15 tonne fire appliance) access within 6m of the tank; (e) is provided with fire brigade tank fittings – 50mm ball valve and male camlock coupling and, if underground, an access hole of 200mm (minimum) to accommodate suction lines; and (f) is clearly identified by directional signage provided at the street frontage. 	<p>Not applicable</p>
<p>PO14 Landscaping does not increase the potential bushfire risk.</p>	<p>AO14 Landscaping uses species that are less likely to exacerbate a bushfire event, and does not increase fuel loads within separation areas.</p>	<p>Not applicable</p>
<p>PO15 The risk of bushfire and the need to mitigate that risk is balanced against other factors (such as but not limited to, biodiversity or scenic amenity).</p>	<p>AO15 Bushfire risk mitigation treatments do not have a significant impact on the natural environment or landscape character of the locality where this has value.</p>	<p>Not applicable</p>

Note – 'Vulnerable activities' are those involving:

- (1) the accommodation or congregation of vulnerable sectors of the community such as child care centres, community care centre, educational establishments, detention facilities, hospitals, rooming accommodation, retirement facilities or residential care facilities; or

- (2) the provision of essential services including community uses, emergency services, utility installation, telecommunications facility, substations and major electricity infrastructure.

8.2.4 Flood and storm tide hazard overlay code

8.2.4.1 Application

- (1) This code applies to assessing a material change of use, reconfiguring a lot, operational work or building work within the Flood and storm tide hazard overlay, if:
 - (a) self assessable or assessable development where the code is identified as being applicable in the Assessment criteria for the Overlay Codes contained in the Levels of Assessment Tables in section 5.6;
 - (b) impact assessable development.

- (2) Land in the Flood and storm tide hazard overlay is identified on the Flood and storm tide hazard overlay map in Schedule 2 and includes the:
 - (a) Storm tide – high hazard sub-category;
 - (b) Storm tide – medium hazard sub-category;
 - (c) Flood plain assessment sub-category;
 - (d) 100 ARI Mossman, Port Douglas and Daintree Township Flood Studies sub-category.

- (3) When using this code, reference should be made to Part 5.

Note - The Flood and storm tide hazards overlay maps contained in Schedule 2 identify areas (Flood and storm tide inundation areas) where flood and storm tide inundation modelling has been undertaken by the Council. Other areas not identified by the Flood and inundation hazards overlay maps contained in Schedule 2 may also be subject to the defined flood event or defined storm tide event.

8.2.4.2 Purpose

- (1) The purpose of the Flood and storm tide hazard overlay code is to:
 - (a) implement the policy direction in the Strategic Framework, in particular:
 - (i) Theme 1 Settlement pattern: Element 3.4.7 Mitigation of hazards;
 - (ii) Theme 6 Infrastructure and transport: Element 3.9.2 Energy.
 - (b) enable an assessment of whether development is suitable on land within the Flood and storm tide hazard sub-categories.

- (2) The purpose of the code will be achieved through the following overall outcomes:
 - (a) development siting, layout and access responds to the risk of the natural hazard and minimises risk to personal safety;
 - (b) development achieves an acceptable or tolerable risk level, based on a fit for purpose risk assessment;
 - (c) the development is resilient to natural hazard events by ensuring siting and design accounts for the potential risks of natural hazards to property;
 - (d) the development supports, and does not unduly burden disaster management response or recovery capacity and capabilities;
 - (e) the development directly, indirectly and cumulatively avoids an unacceptable increase in severity of the natural hazards and does not significantly increase the potential for damage on site or to other properties;
 - (f) the development avoids the release of hazardous materials as a result of a natural hazard event;

- (g) natural processes and the protective function of landforms and/or vegetation are maintained in natural hazard areas;
- (h) community infrastructure is located and designed to maintain the required level of functionality during and immediately after a hazard event.

8.2.4.3 Criteria for assessment

Table 8.2.4.3.a – Flood and storm tide hazards overlay code –assessable development

Performance outcomes	Acceptable outcomes	Applicant Response
For assessable and self assessable development		
<p>PO1 Development is located and designed to: ensure the safety of all persons; minimise damage to the development and contents of buildings; provide suitable amenity; minimise disruption to residents, recovery time, and rebuilding or restoration costs after inundation events.</p> <p>Note – For assessable development within the flood plain assessment sub-category, a flood study by a suitably qualified professional is required to identify compliance with the intent of the acceptable outcome.</p>	<p>AO1.1 Development is sited on parts of the land that is not within the Flood and Storm tide hazards overlay maps contained in Schedule 2;</p> <p>or</p> <p>For dwelling houses,</p> <p>AO1.2 Development within the Flood and Storm Tide hazards overlay maps (excluding the Flood plain assessment sub-category) is designed to provide immunity to the Defined Inundation Event as outlined within Table 8.2.4.3.b plus a freeboard of 300mm.</p> <p>AO1.3 New buildings are: (a) not located within the overlay area; (b) located on the highest part of the site to minimise entrance of flood waters; (c) provided with clear and direct pedestrian and vehicle evacuation routes off the site.</p> <p>AO1.4 In non urban areas, buildings and infrastructure are set back 50 metres from natural riparian corridors to maintain their natural function of reducing velocity of floodwaters.</p>	<p>The subject site is affected by the Flood and Storm Tide Hazard Overlay. The proposed development comprises an open-sided carport, which is a non-habitable, low-intensity structure ancillary to the existing dwelling.</p> <p>The proposal does not introduce habitable floor area, does not increase the number of people exposed to flood risk, and does not intensify residential use of the site. The open design of the carport allows for the free passage of floodwaters and will not obstruct flood flows or reduce flood storage capacity on the site.</p> <p>The development does not involve filling, hazardous materials, or changes to site levels and will not adversely affect flood behaviour or evacuation outcomes. Accordingly, the proposal is considered to be consistent with the intent of the Flood and Storm Tide Hazard Overlay Code and does not warrant additional flood mitigation measures.</p>



For assessable development		
<p>PO2 The development is compatible with the level of risk associated with the natural hazard.</p>	<p>A02 The following uses are not located in land inundated by the Defined Flood Event (DFE) / Storm tide: (a) Retirement facility; (b) Community care facility; (c) Child care centre.</p>	<p>Not applicable</p>
<p>PO3 Development siting and layout responds to flooding potential and maintains personal safety</p>	<p>For Material change of use</p> <p>A03.1 New buildings are: (d) not located within the overlay area; (e) located on the highest part of the site to minimise entrance of flood waters; (f) provided with clear and direct pedestrian and vehicle evacuation routes off the site.</p> <p>or</p>	<p>Not applicable</p>



Performance outcomes	Acceptable outcomes	Applicant Response
	<p>AO3.2 The development incorporates an area on site that is at least 300mm above the highest known flood inundation level with sufficient space to accommodate the likely population of the development safely for a relatively short time until flash flooding subsides or people can be evacuated.</p> <p>or</p> <p>AO3.3 Where involving an extension to an existing dwelling house that is situated below DFE /Storm tide, the maximum size of the extension does not exceed 70m² gross floor area.</p> <p>Note – If part of the site is outside the Hazard Overlay area, this is the preferred location of all buildings.</p> <p>For Reconfiguring a lot</p> <p>AO3.4 Additional lots: (a) are not located in the hazard overlay area; or (b) are demonstrated to be above the flood level identified for the site.</p> <p>Note - If part of the site is outside the Hazard Overlay area, this is the preferred location for all lots (excluding park or other open space and recreation lots).</p> <p>Note – Buildings subsequently developed on the lots will need to comply with the relevant building assessment provisions under the <i>Building Act 1975</i>.</p> <p>AO3.5 Road and/or pathway layout ensures residents are not physically isolated from adjacent flood free urban areas and provides a safe and clear</p>	<p>Not applicable</p>



evacuation route path:

- (a) by locating entry points into the reconfiguration above the flood level and avoiding culs-de-sac or other non-permeable layouts; and
- (b) by direct and simple routes to main carriageways.

AO3.6

Signage is provided on site (regardless of whether the land is in public or private ownership) indicating the position and path of all safe evacuation routes off the site and if the site contains, or is within 100m of a floodable waterway, hazard warning signage and depth indicators are also provided at key hazard points, such as at floodway crossings or entrances to low-lying reserves.

or



Performance outcomes	Acceptable outcomes	Applicant Response
	<p>AO3.7 There is no intensification of residential uses within the flood affected areas on land situated below the DFE/Storm tide.</p>	<p>Not applicable</p>
	<p>For Material change of use (Residential uses) AO3.1 The design and layout of buildings used for residential purposes minimise risk from flooding by providing: (a) parking and other low intensive, non-habitable uses at ground level;</p> <p>Note - The high-set 'Queenslander' style house is a resilient low-density housing solution in floodplain areas. Higher density residential development should ensure only non-habitable rooms (e.g. garages, laundries) are located on the ground floor.</p>	<p>Not applicable</p>



<p>PO4 Development is resilient to flood events by ensuring design and built form account for the potential risks of flooding.</p>	<p>For Material change of use (Non-residential uses) AO4.2 Non residential buildings and structures allow for the flow through of flood waters on the ground floor.</p> <p>Note - Businesses should ensure that they have the necessary contingency plans in place to account for the potential need to relocate property prior to a flood event (e.g. allow enough time to transfer stock to the upstairs level of a building or off site).</p> <p>Note - The relevant building assessment provisions under the <i>Building Act 1975</i> apply to all building work within the Hazard Area and need to take into account the flood potential within the area.</p> <p>AO4.3 Materials are stored on-site: (a) are those that are readily able to be moved in a flood event; (b) where capable of creating a safety hazard by being shifted by flood waters, are contained in order to minimise movement in times of flood.</p> <p>Notes - (a) Businesses should ensure that they have the necessary contingency plans in place to account for the potential need to relocate property prior to a flood event (e.g. allow enough time to transfer stock to the upstairs level of a building or off site). (b) Queensland Government Fact Sheet 'Repairing your House after a Flood' provides information about water resilient products and building techniques.</p>	<p>Not applicable</p>
<p>PO5 Development directly, indirectly and cumulatively avoids any increase in water flow velocity or flood level and does not increase the potential flood damage either on site or on other properties.</p> <p>Note – Berms and mounds are considered to be an</p>	<p>For Operational works AO5.1 Works in urban areas associated with the proposed development do not involve: (a) any physical alteration to a watercourse or floodway including vegetation clearing; or (b) a net increase in filling (including berms and</p>	<p>Not applicable</p>



Performance outcomes	Acceptable outcomes	Applicant Response
<p>undesirable built form outcome and are not supported.</p>	<p>mounds).</p> <p>AO5.2 Works (including buildings and earthworks) in non urban areas either:</p> <ul style="list-style-type: none"> (a) do not involve a net increase in filling greater than 50m³; or (b) do not result in any reductions of on-site flood storage capacity and contain within the subject site any changes to depth/duration/velocity of flood waters; <p>or</p> <ul style="list-style-type: none"> (c) do not change flood characteristics outside the subject site in ways that result in: <ul style="list-style-type: none"> (i) loss of flood storage; (ii) loss of/changes to flow paths; (iii) acceleration or retardation of flows or any reduction in flood warning times elsewhere on the flood plain. <p>For Material change of use</p> <p>AO5.3 Where development is located in an area affected by DFE/Storm tide, a hydraulic and hydrology report, prepared by a suitably qualified professional, demonstrates that the development maintains the flood storage capacity on the subject site; and</p> <ul style="list-style-type: none"> (a) does not increase the volume, velocity, concentration of flow path alignment of stormwater flow across sites upstream, downstream or in the general vicinity of the subject site; and (b) does not increase ponding on sites upstream, downstream or in the general vicinity of the subject site. 	<p>Not applicable</p>



	<p>For Material change of use and Reconfiguring a lot</p> <p>AO5.4 In non urban areas, buildings and infrastructure are set back 50 metres from natural riparian corridors to maintain their natural function of reducing velocity of floodwaters.</p> <p>Note – Fences and irrigation infrastructure (e.g. irrigation tape) in rural areas should be managed to minimise adverse the impacts that they may have on downstream properties in the event of a flood.</p>	<p>Not applicable</p>
<p>PO6 Development avoids the release of hazardous materials into floodwaters.</p>	<p>For Material change of use</p> <p>AO6.1 Materials manufactured or stored on site are not hazardous or noxious, or comprise materials that may cause a detrimental effect on the environment if discharged in a flood event;</p>	<p>Not applicable</p>



Performance outcomes	Acceptable outcomes	Applicant Response
	<p>or</p> <p>AO6.2 If a DFE level is adopted, structures used for the manufacture or storage of hazardous materials are: (a) located above the DFE level;</p> <p>or</p> <p>(b) designed to prevent the intrusion of floodwaters.</p> <p>AO6.3 Infrastructure is designed and constructed to resist hydrostatic and hydrodynamic forces as a result of inundation by the DFE.</p> <p>AO6.4 If a flood level is not adopted, hazardous materials and their manufacturing equipment are located on the highest part of the site to enhance flood immunity and designed to prevent the intrusion of floodwaters.</p> <p>Note – Refer to <i>Work Health and Safety Act 2011</i> and associated Regulation and Guidelines, the <i>Environmental Protection Act 1994</i> and the relevant building assessment provisions under the <i>Building Act 1975</i> for requirements related to the manufacture and storage of hazardous materials.</p>	<p>Not applicable</p>



<p>PO7 The development supports, and does not unduly burden, disaster management response or recovery capacity and capabilities.</p>	<p>A07 Development does not:</p> <ul style="list-style-type: none"> (a) increase the number of people calculated to be at risk of flooding; (b) increase the number of people likely to need evacuation; (c) shorten flood warning times; and (d) impact on the ability of traffic to use evacuation routes, or unreasonably increase traffic volumes on evacuation routes. 	<p>Not applicable</p>
<p>PO8 Development involving community infrastructure:</p> <ul style="list-style-type: none"> (a) remains functional to serve community need during and immediately after a flood event; (b) is designed, sited and operated to avoid adverse impacts on the community or environment due to impacts of flooding on infrastructure, facilities or access and egress routes; (c) retains essential site access during a flood event; (d) is able to remain functional even when other infrastructure or services may be compromised in a flood event. 	<p>A08.1 The following uses are not located on land inundated during a DFE/Storm tide:</p> <ul style="list-style-type: none"> (a) community residence; and (b) emergency services; and (c) residential care facility; and (d) utility installations involving water and sewerage treatment plants; and (e) storage of valuable records or items of historic or cultural significance (e.g. archives, museums, galleries, libraries). <p>or</p>	<p>Not applicable</p>



Performance outcomes	Acceptable outcomes	Applicant Response
	<p>AO8.2</p> <p>The following uses are not located on land inundated during a 1% AEP flood event:</p> <ul style="list-style-type: none"> (a) community and cultural facilities, including facilities where an education and care service under the Education and care Services National law (Queensland) is operated or child care service under the <i>Child Care Act 2002</i> is conducted, (b) community centres; (c) meeting halls; (d) galleries; (e) libraries. <p>The following uses are not located on land inundated during a 0.5% AEP flood event.</p> <ul style="list-style-type: none"> (a) emergency shelters; (b) police facilities; (c) sub stations; (d) water treatment plant <p>The following uses are not located on land inundated during a 0.2% AEP flood event:</p> <ul style="list-style-type: none"> (a) correctional facilities; (b) emergency services; (c) power stations; (d) major switch yards. <p>and/or</p> <p>AO8.3</p> <p>The following uses have direct access to low hazard evacuation routes as defined in Table 8.2.4.3.c:</p> <ul style="list-style-type: none"> (a) community residence; and (b) emergency services; and (c) hospitals; and (d) residential care facility; and (e) sub stations; and 	<p>Not applicable</p>



- (f) utility installations involving water and sewerage treatment plants.

AO8.4

Any components of infrastructure that are likely to fail to function or may result in contamination when inundated by flood, such as electrical switch gear and motors, telecommunications connections, or water supply pipeline air valves are:

- (a) located above DFE/Storm tide or the highest known flood level for the site;
- (b) designed and constructed to exclude floodwater intrusion / infiltration.

AO8.5

Infrastructure is designed and constructed to resist hydrostatic and hydrodynamic forces as a result of inundation by a flood.



Table 8.2.4.3.b - Minimum immunity (floor levels) for development

Minimum immunity to be achieved (floor levels)	Uses and elements of activities acceptable in the event
20% AEP level	<ul style="list-style-type: none"> Parks and open space.
5% AEP level	<ul style="list-style-type: none"> Car parking facilities (including car parking associated with use of land).
1% AEP level	<ul style="list-style-type: none"> All development (where not otherwise requiring an alternative level of minimum immunity).
0.5% AEP level	<ul style="list-style-type: none"> Emergency services (if for a police station); Industry activities (if including components which store, treat or use hazardous materials); Substation; Utility installation.
0.2% AEP level	<ul style="list-style-type: none"> Emergency services; Hospital; Major electricity infrastructure; Special industry.

Table 8.2.4.3.c - Degree of flood

Criteria	Low	Medium	High	Extreme
Wading ability	If necessary children and the elderly could wade. (Generally, safe wading velocity depth product is less than 0.25)	Fit adults can wade. (Generally, safe wading velocity depth product is less than 0.4)	Fit adults would have difficulty wading. (Generally, safe wading velocity depth product is less than 0.6)	Wading is not an option.
Evacuation distances	< 200 metres	200-400 metres	400-600 metres	600 metres
Maximum flood depths	< 0.3 metre	< 0.6 metre	< 1.2 metres	1.2 metres



Maximum flood velocity	< 0.4 metres per second	< 0.8 metres per second	< 1.5 metres per second	1.5 metres per second
Typical means of egress	Sedan	Sedan early, but 4WD or trucks later	4WD or trucks only in early stages, boats or helicopters	Large trucks, boats or helicopters
Timing Note: This category cannot be implemented until evacuation times have been established in the Counter Disaster Plan (Flooding)	Ample flood forecasting. Warning and evacuation routes remain passable for twice as long as evacuation time.	Evacuation routes remain trafficable for 1.5 times as long as the evacuation.	Evacuation routes remain trafficable for only up to minimum evacuation time.	There is insufficient evacuation time.

Note: The evacuation times for various facilities or areas would (but not necessarily) be included in the Counter Disaster Plan. Generally safe wading conditions assume even walking surfaces and no obstructions, steps, soft underfoot etc.

CONSTRUCTION DRAWINGS

VINCHENZO DI CUGNO 29 BARRIER ST, PORT DOUGLAS

THESE DRAWINGS HAVE BEEN PREPARED FOR THE PURPOSE OF OBTAINING BUILDING APPROVAL

THESE PLANS ARE TO BE ACCOMPANIED AND READ IN CONJUNCTION BY THE OTHER CONSULTANTS DOCUMENTATION, INCLUDING BUT NOT LIMITED TO:

- GEOTECHNICAL ENGINEERS SOIL TEST AND REPORT
- BYDA RESPONSE ENQUIRY
- STRUCTURAL ENGINEERS DESIGN SPECIFICATIONS
- DEVELOPMENT NOTICE IF APPLICABLE

SITE INFORMATION -

CLIENTS NAME: VINCHENZO DI CUGNO
PROJECT ADDRESS: 29 BARRIER ST, PORT DOUGLAS
STATE: QLD
POST CODE: 4877
RP/SP NUMBER: 13 SP133732
BUILDING CLASS: 10a
WIND CLASS: C2 (ASSUMED)
SOIL CLASS: S (ASSUMED)
AVG ANNUAL RAINFALL: 2010mm
AVG LOW TEMPERATURE: 23.5°C
AVG HIGH TEMPERATURE: 29.3°C

Setbacks
Setback Non Compliance with Zone Code. Proposed Carport to be located over existing designated carparking.



SITE PLAN
1 : 200

STRUCTURAL DETAILS
ADEQUATE
AS CERTIFIED

Michael Lancini - RPEQ 18786
MAL Engineers Pty Ltd
ABN : 30636773781

Angel Construction
PO Box 303 Port Douglas 4877 Qld Australia
Ph: 07 4099 4516
www.angelconstruction.com.au
designs@angelconstruction.com.au
Over 25 years of Construction Experience
© All designs are protected by copyright Act 1968
Angel Construction QBCC LIC NO. 15128072
licenced builders



CERTIFIED AS
STRUCTURALLY ADEQUATE



CERTIFIED BY BUILDABLE
APPROVALS

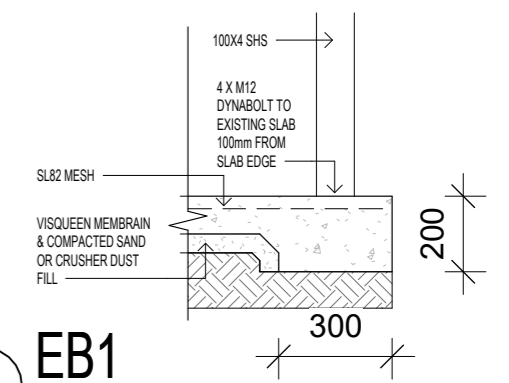
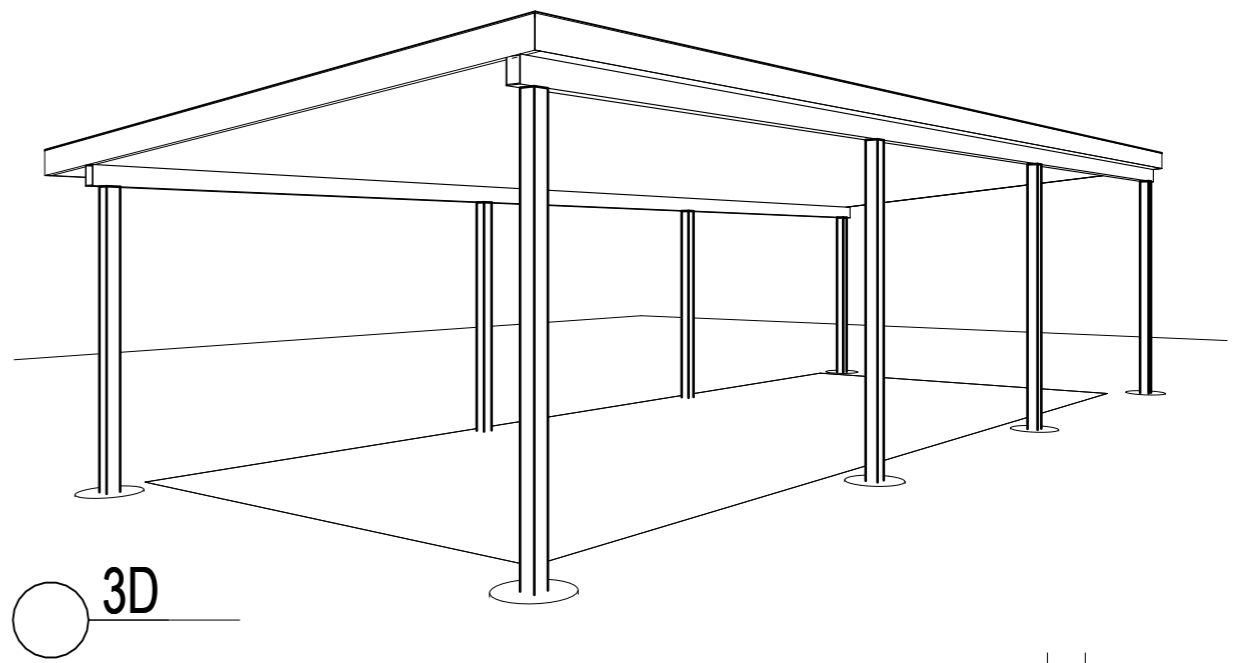
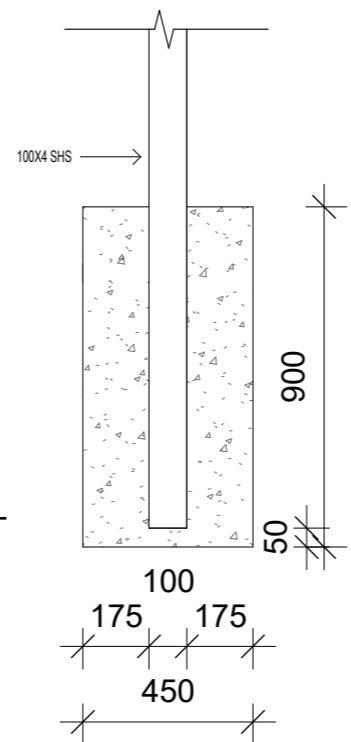
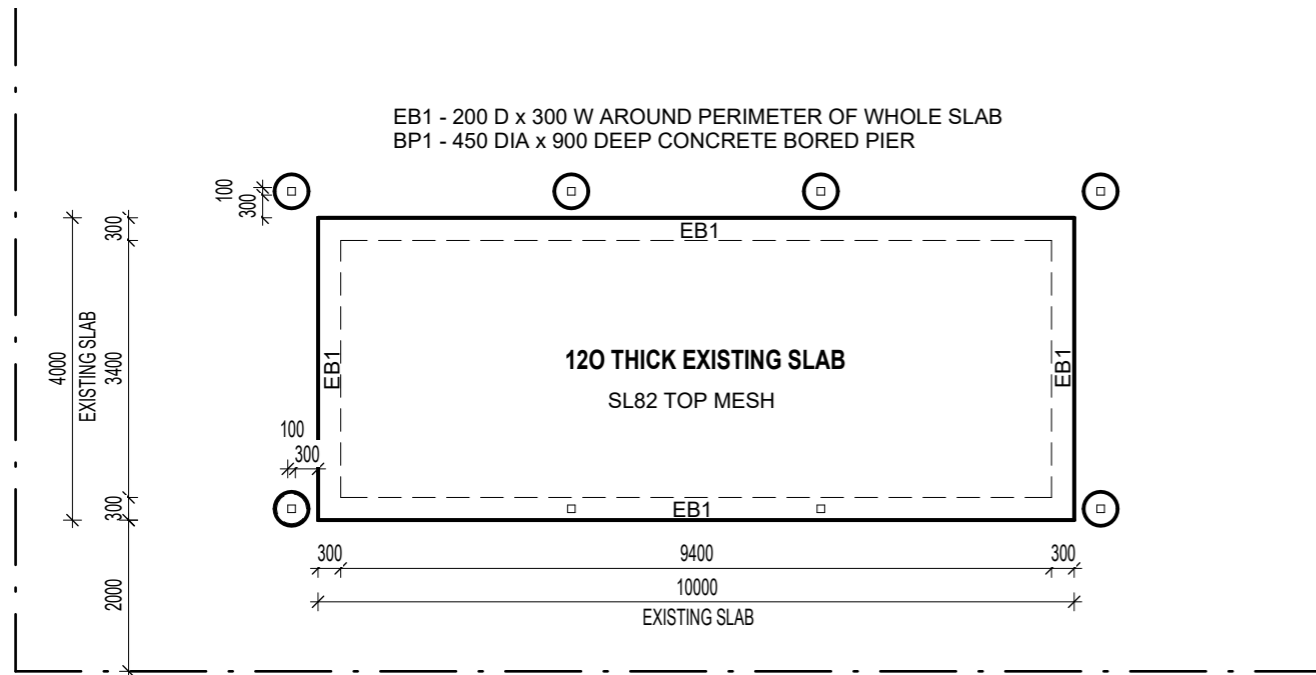


PLAN ISSUE: 25/11/2025 4:24:58 PM

ISSUED FOR CONSTRUCTION

PROJECT: THE BEACH SHACK FLY OVER
PROJECT ADDRESS: 29 BARRIER STREET, PORT DOUGLAS. QLD, 4877

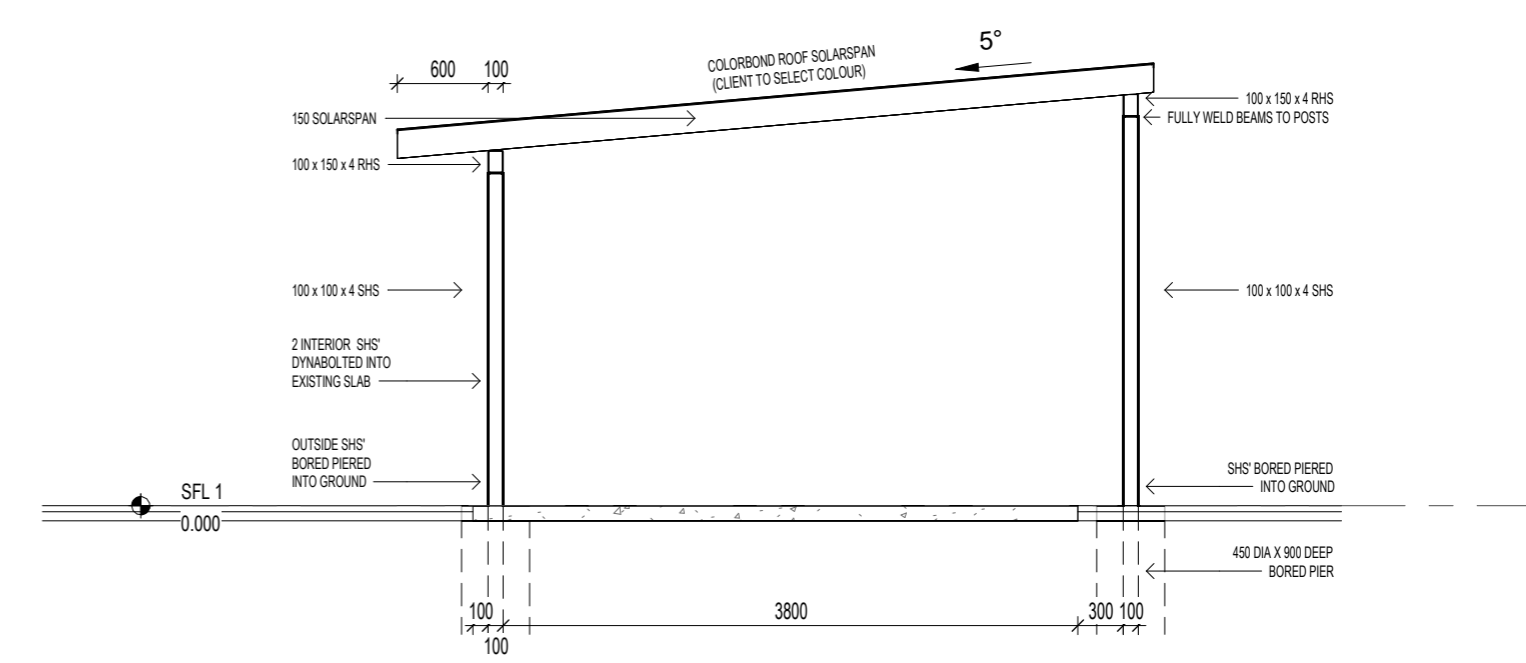
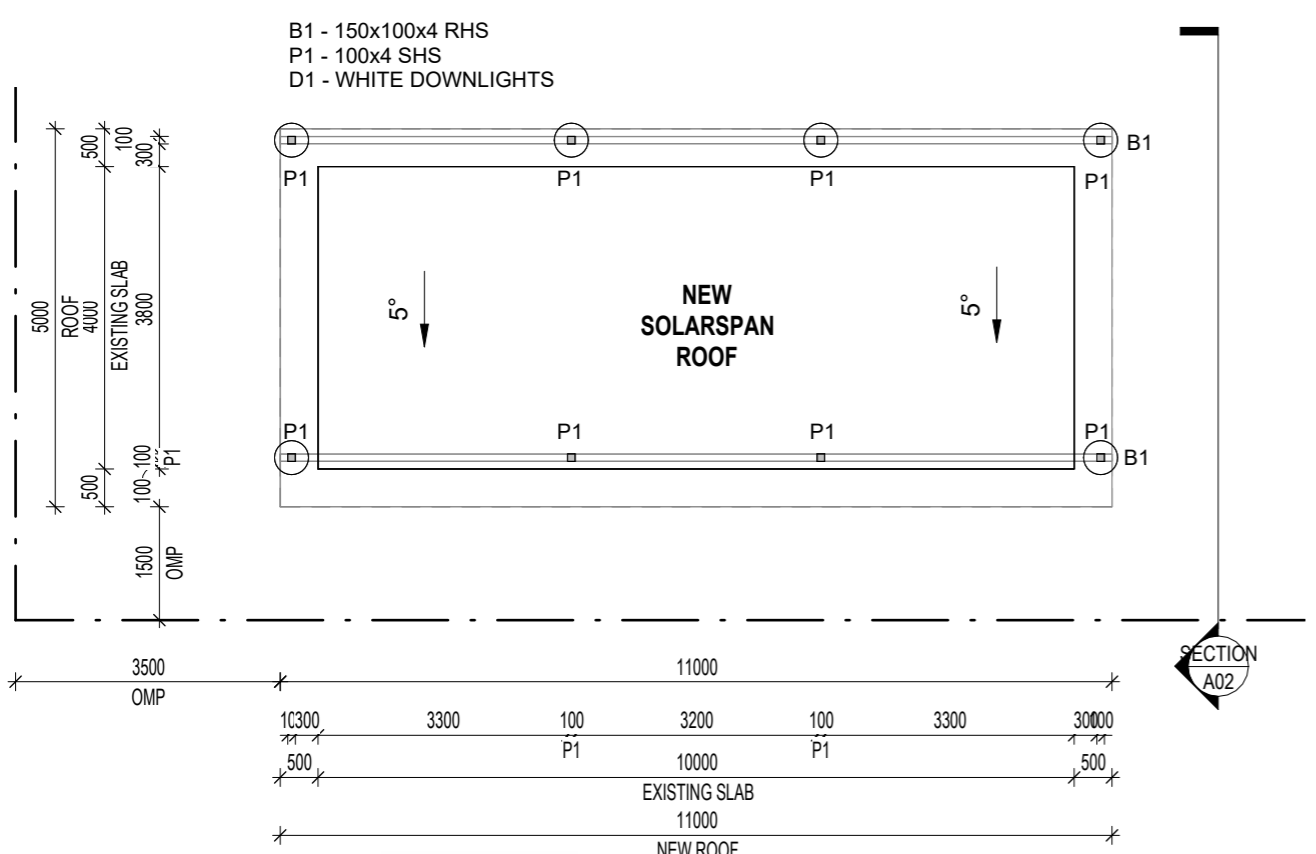
SHEET: COVER PAGE SCALE AS SHOWN @ A3
DESIGNED BY: ANGEL CONSTRUCTION
DRAWN BY: JAYDEN CHADWICK
PROJECT NUMBER: 061125 SHEET: G01 REV: C



SLAB PLAN
1 : 100

BP1
1 : 20

EB1
1 : 20

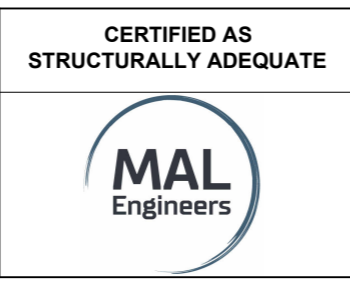


FLOOR PLAN
1 : 100

SECTION
1 : 50

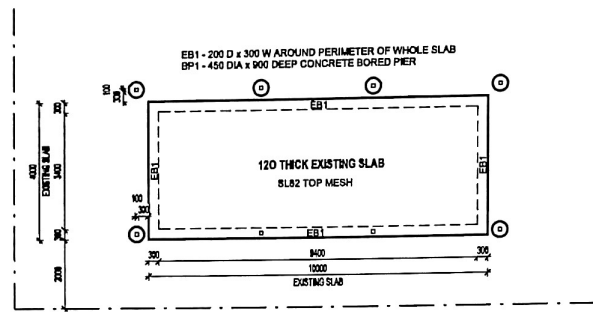
STRUCTURAL DETAILS
ADEQUATE
AS CERTIFIED
Michael Lancini - RPEQ 18786
MAL Engineers Pty Ltd
ABN : 30636773781

Angel Construction
PO Box 303 Port Douglas 4877 Qld Australia
Ph: 07 4099 4516
www.angelconstruction.com.au
designs@angelconstruction.com.au
Over 25 years of Construction Experience
© All designs are protected by copyright Act 1968
Angel Construction QBCC LIC NO. 15128072
licenced builders

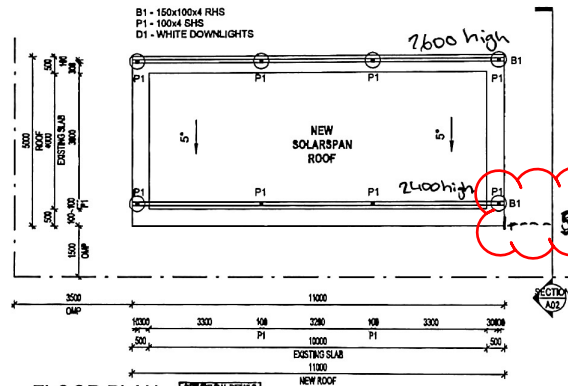


PLAN ISSUE: 25/11/2025 4:24:59 PM
ISSUED FOR CONSTRUCTION

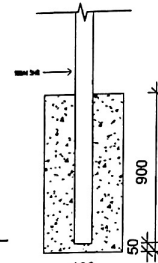
PROJECT: THE BEACH SHACK FLY OVER
PROJECT ADDRESS: 29 BARRIER STREET, PORT DOUGLAS. QLD, 4877
SHEET: NEW SCALE AS SHOWN @ A3
DESIGNED BY: ANGEL CONSTRUCTION
DRAWN BY: JAYDEN CHADWICK
PROJECT NUMBER: 061125 SHEET: A02 REV: C



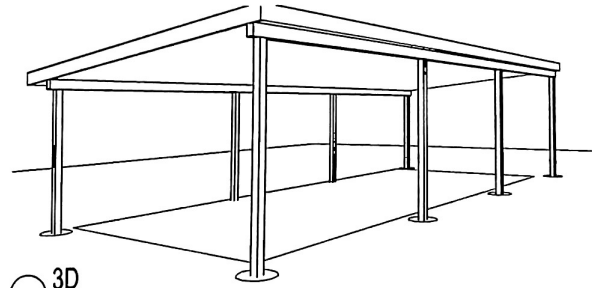
SLAB PLAN
1:100



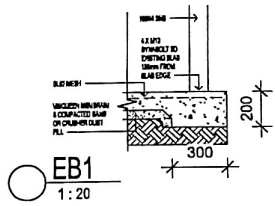
FLOOR PLAN
1:100



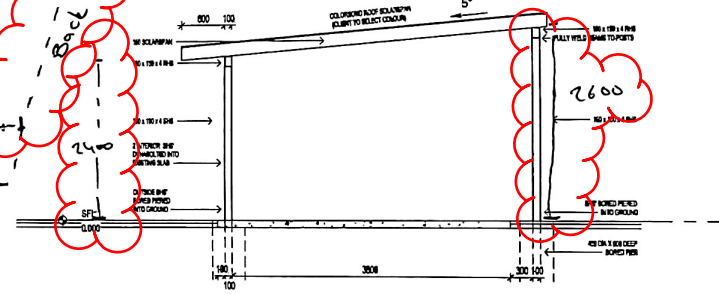
BP1
1:20



3D

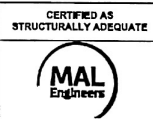


EB1
1:20



SECTION
1:50

Angel Construction
PO Box 303 Port Douglas 4877 Qld Australia
Ph: 07 4099 4516
www.angelconstruction.com.au
www.gangangconstruction.com.au
Over 25 years of Construction Experience
© All designs are protected by copyright Act 1968
Angel Construction QBCO LIC NO: 16126072
James Jackson

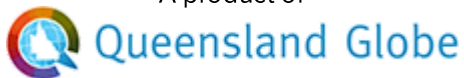


PLAN ISSUE: 29/11/2025 4:24:59 PM
ISSUED FOR CONSTRUCTION

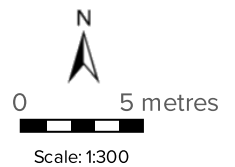
PROJECT: THE BEACH SHACK FLY OVER
PROJECT ADDRESS: 29 BARBER STREET, PORT DOUGLAS, QLD, 4877
SHEET: NEW SCALE: AS SHOWN @ A3
DESIGNED BY: ANGEL CONSTRUCTION
DRAWN BY: JAYDEN CHADWICK
PROJECT NUMBER: 061125 SHEET: A02 REV: C



A product of



Legend located on next page



Printed at: A4
Print date: 23/1/2026

Not suitable for accurate measurement.
Projection: Web Mercator EPSG 102100 (3857)

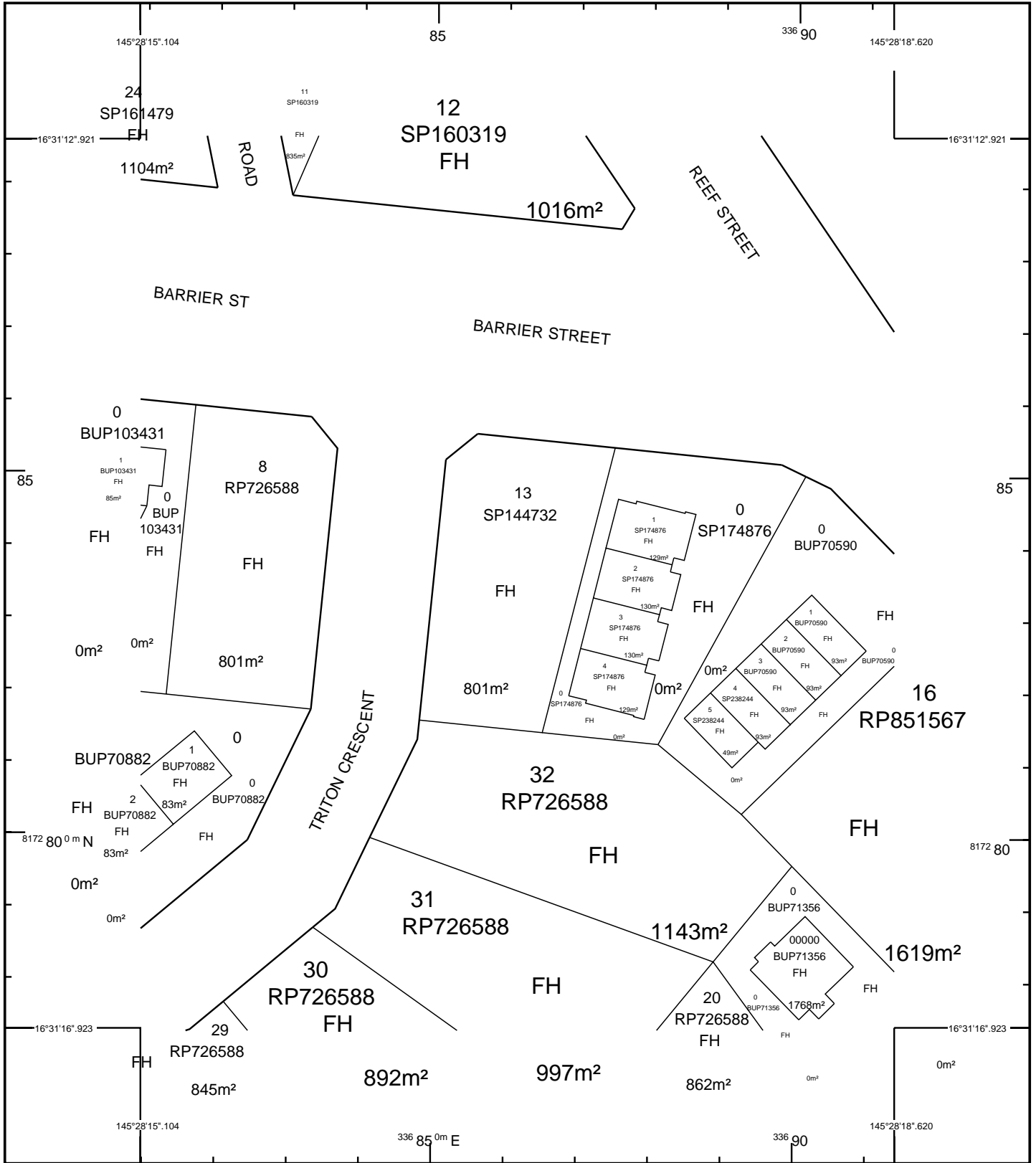
For more information, visit
<https://qldglobe.information.qld.gov.au/help-info/Contact-us.html>



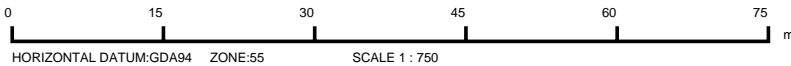
Department of Natural Resources and Mines,
Manufacturing, and Regional and Rural Development

Includes material © State of Queensland 2026. You are responsible for ensuring that the map is suitable for your purposes. The State of Queensland makes no representation or warranties in relation to the map contents and disclaims all liability.

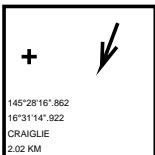
If imagery is displayed, imagery includes material © CNES reproduced under license from Airbus DS, all rights reserved © 21AT © Earth-i, all rights reserved, © Planet Labs PBC, 2025



STANDARD MAP NUMBER
7964-11113



MAP WINDOW POSITION &
NEAREST LOCATION



SUBJECT PARCEL DESCRIPTION

DCDB	
Lot/Plan	13/SP144732
Area/Volume	801m ²
Tenure	FREEHOLD
Local Government	DOUGLAS SHIRE
Locality	PORT DOUGLAS
Segment/Parcel	8956/709

CLIENT SERVICE STANDARDS

PRINTED 25/11/2025
DCDB 24/11/2025
Users of the information recorded in this document (the Information) accept all responsibility and risk associated with the use of the Information and should seek independent professional advice in relation to dealings with property.
Despite Department of Resources best efforts, RESOURCES makes no representations or warranties in relation to the Information, and, to the extent permitted by law, exclude or limit all warranties relating to correctness, accuracy, reliability, completeness or currency and all liability for any direct, indirect and consequential costs, losses, damages and expenses incurred in any way (including but not limited to that arising from negligence) in connection with any use of or reliance on the Information
For further information on SmartMap products visit https://www.qld.gov.au/housing/buying-owning-home/property-land-valuations/smartmaps

SmartMap

An External Product of
SmartMap Information Services
Based upon an extraction from the
Digital Cadastral Data Base



**Queensland
Government**

(c) The State of Queensland,
(Department of Resources) 2025.



DA Form 1 – Development application details

Approved form (version 1.6 effective 2 August 2024) made under section 282 of the Planning Act 2016.

This form **must** be used to make a development application **involving code assessment or impact assessment**, except when applying for development involving only building work.

For a development application involving **building work only**, use *DA Form 2 – Building work details*.

For a development application involving **building work associated with any other type of assessable development (i.e. material change of use, operational work or reconfiguring a lot)**, use this form (*DA Form 1*) and parts 4 to 6 of *DA Form 2 – Building work details*.

Unless stated otherwise, all parts of this form **must** be completed in full and all required supporting information **must** accompany the development application.

One or more additional pages may be attached as a schedule to this development application if there is insufficient space on the form to include all the necessary information.

This form and any other form relevant to the development application must be used to make a development application relating to strategic port land and Brisbane core port land under the *Transport Infrastructure Act 1994*, and airport land under the *Airport Assets (Restructuring and Disposal) Act 2008*. For the purpose of assessing a development application relating to strategic port land and Brisbane core port land, any reference to a planning scheme is taken to mean a land use plan for the strategic port land, Brisbane port land use plan for Brisbane core port land, or a land use plan for airport land.

Note: All terms used in this form have the meaning given under the Planning Act 2016, the Planning Regulation 2017, or the Development Assessment Rules (DA Rules).

PART 1 – APPLICANT DETAILS

1) Applicant details

Applicant name(s) (individual or company full name)	Vincenzo Di Cugno
Contact name (only applicable for companies)	Jess Burton C/- Buildable
Postal address (P.O. Box or street address)	701 Albany Creek Road, Albany Creek QLD 4035
Suburb	Albany Creek
State	QLD
Postcode	4035
Country	Australia
Contact number	1300 001 771
Email address (non-mandatory)	admin@buildable.com.au
Mobile number (non-mandatory)	
Fax number (non-mandatory)	
Applicant's reference number(s) (if applicable)	202511383

1.1) Home-based business

Personal details to remain private in accordance with section 264(6) of *Planning Act 2016*

2) Owner's consent

2.1) Is written consent of the owner required for this development application?

- Yes – the written consent of the owner(s) is attached to this development application
 No – proceed to 3)

PART 2 – LOCATION DETAILS

3) Location of the premises (complete 3.1) or 3.2), and 3.3) as applicable)

Note: Provide details below and attach a site plan for any or all premises part of the development application. For further information, see [DA Forms Guide: Relevant plans](#).

3.1) Street address and lot on plan

- Street address **AND** lot on plan (all lots must be listed), **or**
 Street address **AND** lot on plan for an adjoining or adjacent property of the premises (appropriate for development in water but adjoining or adjacent to land e.g. jetty, pontoon. All lots must be listed).

a)	Unit No.	Street No.	Street Name and Type	Suburb
		29	Barrier Street	Port Douglas
	Postcode	Lot No.	Plan Type and Number (e.g. RP, SP)	Local Government Area(s)
	4877	13	SP144732	Douglas Shire Council
b)	Unit No.	Street No.	Street Name and Type	Suburb
	Postcode	Lot No.	Plan Type and Number (e.g. RP, SP)	Local Government Area(s)

3.2) Coordinates of premises (appropriate for development in remote areas, over part of a lot or in water not adjoining or adjacent to land e.g. channel dredging in Moreton Bay)

Note: Place each set of coordinates in a separate row.

- Coordinates of premises by longitude and latitude

Longitude(s)	Latitude(s)	Datum	Local Government Area(s) (if applicable)
		<input type="checkbox"/> WGS84 <input type="checkbox"/> GDA94 <input type="checkbox"/> Other: <input type="text"/>	

- Coordinates of premises by easting and northing

Easting(s)	Northing(s)	Zone Ref.	Datum	Local Government Area(s) (if applicable)
		<input type="checkbox"/> 54 <input type="checkbox"/> 55 <input type="checkbox"/> 56	<input type="checkbox"/> WGS84 <input type="checkbox"/> GDA94 <input type="checkbox"/> Other: <input type="text"/>	

3.3) Additional premises

- Additional premises are relevant to this development application and the details of these premises have been attached in a schedule to this development application
 Not required

4) Identify any of the following that apply to the premises and provide any relevant details

In or adjacent to a water body or watercourse or in or above an aquifer
 Name of water body, watercourse or aquifer:

On strategic port land under the *Transport Infrastructure Act 1994*
 Lot on plan description of strategic port land:
 Name of port authority for the lot:

In a tidal area
 Name of local government for the tidal area (if applicable):
 Name of port authority for tidal area (if applicable):

On airport land under the *Airport Assets (Restructuring and Disposal) Act 2008*

Name of airport:	
<input type="checkbox"/> Listed on the Environmental Management Register (EMR) under the <i>Environmental Protection Act 1994</i>	
EMR site identification:	
<input type="checkbox"/> Listed on the Contaminated Land Register (CLR) under the <i>Environmental Protection Act 1994</i>	
CLR site identification:	

5) Are there any existing easements over the premises?

Note: Easement uses vary throughout Queensland and are to be identified correctly and accurately. For further information on easements and how they may affect the proposed development, see [DA Forms Guide](#).

- Yes – All easement locations, types and dimensions are included in plans submitted with this development application
- No

PART 3 – DEVELOPMENT DETAILS

Section 1 – Aspects of development

6.1) Provide details about the first development aspect

a) What is the type of development? *(tick only one box)*

- Material change of use Reconfiguring a lot Operational work Building work

b) What is the approval type? *(tick only one box)*

- Development permit Preliminary approval Preliminary approval that includes a variation approval

c) What is the level of assessment?

- Code assessment Impact assessment *(requires public notification)*

d) Provide a brief description of the proposal *(e.g. 6 unit apartment building defined as multi-unit dwelling, reconfiguration of 1 lot into 3 lots):*

Carport

e) Relevant plans

Note: Relevant plans are required to be submitted for all aspects of this development application. For further information, see [DA Forms guide: Relevant plans](#).

- Relevant plans of the proposed development are attached to the development application

6.2) Provide details about the second development aspect

a) What is the type of development? *(tick only one box)*

- Material change of use Reconfiguring a lot Operational work Building work

b) What is the approval type? *(tick only one box)*

- Development permit Preliminary approval Preliminary approval that includes a variation approval

c) What is the level of assessment?

- Code assessment Impact assessment *(requires public notification)*

d) Provide a brief description of the proposal *(e.g. 6 unit apartment building defined as multi-unit dwelling, reconfiguration of 1 lot into 3 lots):*

e) Relevant plans

Note: Relevant plans are required to be submitted for all aspects of this development application. For further information, see [DA Forms Guide: Relevant plans](#).

- Relevant plans of the proposed development are attached to the development application

6.3) Additional aspects of development

- Additional aspects of development are relevant to this development application and the details for these aspects that would be required under Part 3 Section 1 of this form have been attached to this development application
- Not required

6.4) Is the application for State facilitated development?

- Yes - Has a notice of declaration been given by the Minister?
- No

Section 2 – Further development details**7) Does the proposed development application involve any of the following?**

Material change of use	<input type="checkbox"/> Yes – complete division 1 if assessable against a local planning instrument
Reconfiguring a lot	<input type="checkbox"/> Yes – complete division 2
Operational work	<input type="checkbox"/> Yes – complete division 3
Building work	<input checked="" type="checkbox"/> Yes – complete <i>DA Form 2 – Building work details</i>

Division 1 – Material change of use

Note: This division is only required to be completed if any part of the development application involves a material change of use assessable against a local planning instrument.

8.1) Describe the proposed material change of use

Provide a general description of the proposed use	Provide the planning scheme definition <i>(include each definition in a new row)</i>	Number of dwelling units <i>(if applicable)</i>	Gross floor area (m ²) <i>(if applicable)</i>
Carport			

8.2) Does the proposed use involve the use of existing buildings on the premises?

- Yes
- No

8.3) Does the proposed development relate to temporary accepted development under the Planning Regulation?

- Yes – provide details below or include details in a schedule to this development application
- No

Provide a general description of the temporary accepted development	Specify the stated period dates under the Planning Regulation

Division 2 – Reconfiguring a lot

Note: This division is only required to be completed if any part of the development application involves reconfiguring a lot.

9.1) What is the total number of existing lots making up the premises?

--

9.2) What is the nature of the lot reconfiguration? *(tick all applicable boxes)*

<input type="checkbox"/> Subdivision <i>(complete 10)</i>	<input type="checkbox"/> Dividing land into parts by agreement <i>(complete 11)</i>
<input type="checkbox"/> Boundary realignment <i>(complete 12)</i>	<input type="checkbox"/> Creating or changing an easement giving access to a lot from a constructed road <i>(complete 13)</i>

14.3) What is the monetary value of the proposed operational work? (include GST, materials and labour)

\$

PART 4 – ASSESSMENT MANAGER DETAILS

15) Identify the assessment manager(s) who will be assessing this development application

Douglas Shire Council

16) Has the local government agreed to apply a superseded planning scheme for this development application?

- Yes – a copy of the decision notice is attached to this development application
- The local government is taken to have agreed to the superseded planning scheme request – relevant documents attached
- No

PART 5 – REFERRAL DETAILS

17) Does this development application include any aspects that have any referral requirements?

Note: A development application will require referral if prescribed by the Planning Regulation 2017.

- No, there are no referral requirements relevant to any development aspects identified in this development application – proceed to Part 6

Matters requiring referral to the **Chief Executive of the Planning Act 2016:**

- Clearing native vegetation
- Contaminated land (*unexploded ordnance*)
- Environmentally relevant activities (ERA) (*only if the ERA has not been devolved to a local government*)
- Fisheries – aquaculture
- Fisheries – declared fish habitat area
- Fisheries – marine plants
- Fisheries – waterway barrier works
- Hazardous chemical facilities
- Heritage places – Queensland heritage place (*on or near a Queensland heritage place*)
- Infrastructure-related referrals – designated premises
- Infrastructure-related referrals – state transport infrastructure
- Infrastructure-related referrals – State transport corridor and future State transport corridor
- Infrastructure-related referrals – State-controlled transport tunnels and future state-controlled transport tunnels
- Infrastructure-related referrals – near a state-controlled road intersection
- Koala habitat in SEQ region – interfering with koala habitat in koala habitat areas outside koala priority areas
- Koala habitat in SEQ region – key resource areas
- Ports – Brisbane core port land – near a State transport corridor or future State transport corridor
- Ports – Brisbane core port land – environmentally relevant activity (ERA)
- Ports – Brisbane core port land – tidal works or work in a coastal management district
- Ports – Brisbane core port land – hazardous chemical facility
- Ports – Brisbane core port land – taking or interfering with water
- Ports – Brisbane core port land – referable dams
- Ports – Brisbane core port land – fisheries
- Ports – Land within Port of Brisbane's port limits (*below high-water mark*)
- SEQ development area
- SEQ regional landscape and rural production area or SEQ rural living area – tourist activity or sport and recreation activity
- SEQ regional landscape and rural production area or SEQ rural living area – community activity
- SEQ regional landscape and rural production area or SEQ rural living area – indoor recreation
- SEQ regional landscape and rural production area or SEQ rural living area – urban activity
- SEQ regional landscape and rural production area or SEQ rural living area – combined use
- SEQ northern inter-urban break – tourist activity or sport and recreation activity



- SEQ northern inter-urban break – community activity
- SEQ northern inter-urban break – indoor recreation
- SEQ northern inter-urban break – urban activity
- SEQ northern inter-urban break – combined use
- Tidal works or works in a coastal management district
- Reconfiguring a lot in a coastal management district or for a canal
- Erosion prone area in a coastal management district
- Urban design
- Water-related development – taking or interfering with water
- Water-related development – removing quarry material *(from a watercourse or lake)*
- Water-related development – referable dams
- Water-related development – levees *(category 3 levees only)*
- Wetland protection area

Matters requiring referral to the local government:

- Airport land
- Environmentally relevant activities (ERA) *(only if the ERA has been devolved to local government)*
- Heritage places – Local heritage places

Matters requiring referral to the Chief Executive of the distribution entity or transmission entity:

- Infrastructure-related referrals – Electricity infrastructure

Matters requiring referral to:

- The **Chief Executive of the holder of the licence**, if not an individual
- The **holder of the licence**, if the holder of the licence is an individual
- Infrastructure-related referrals – Oil and gas infrastructure

Matters requiring referral to the Brisbane City Council:

- Ports – Brisbane core port land

Matters requiring referral to the Minister responsible for administering the Transport Infrastructure Act 1994:

- Ports – Brisbane core port land *(where inconsistent with the Brisbane port LUP for transport reasons)*
- Ports – Strategic port land

Matters requiring referral to the relevant port operator, if applicant is not port operator:

- Ports – Land within Port of Brisbane’s port limits *(below high-water mark)*

Matters requiring referral to the Chief Executive of the relevant port authority:

- Ports – Land within limits of another port *(below high-water mark)*

Matters requiring referral to the Gold Coast Waterways Authority:

- Tidal works or work in a coastal management district *(in Gold Coast waters)*

Matters requiring referral to the Queensland Fire and Emergency Service:

- Tidal works or work in a coastal management district *(involving a marina (more than six vessel berths))*

18) Has any referral agency provided a referral response for this development application?

- Yes – referral response(s) received and listed below are attached to this development application
- No

Referral requirement	Referral agency	Date of referral response

Identify and describe any changes made to the proposed development application that was the subject of the referral response and this development application, or include details in a schedule to this development application *(if applicable)*.

PART 6 – INFORMATION REQUEST

19) Information request under the DA Rules

I agree to receive an information request if determined necessary for this development application

I do not agree to accept an information request for this development application

Note: By not agreeing to accept an information request I, the applicant, acknowledge:

- that this development application will be assessed and decided based on the information provided when making this development application and the assessment manager and any referral agencies relevant to the development application are not obligated under the DA Rules to accept any additional information provided by the applicant for the development application unless agreed to by the relevant parties
- Part 3 under Chapter 1 of the DA Rules will still apply if the application is an application listed under section 11.3 of the DA Rules or
- Part 2 under Chapter 2 of the DA Rules will still apply if the application is for state facilitated development

Further advice about information requests is contained in the [DA Forms Guide](#).

PART 7 – FURTHER DETAILS

20) Are there any associated development applications or current approvals? (e.g. a preliminary approval)

Yes – provide details below or include details in a schedule to this development application

No

List of approval/development application references	Reference number	Date	Assessment manager
<input type="checkbox"/> Approval <input type="checkbox"/> Development application			
<input type="checkbox"/> Approval <input type="checkbox"/> Development application			

21) Has the portable long service leave levy been paid? (only applicable to development applications involving building work or operational work)

Yes – a copy of the receipted QLeave form is attached to this development application

No – I, the applicant will provide evidence that the portable long service leave levy has been paid before the assessment manager decides the development application. I acknowledge that the assessment manager may give a development approval only if I provide evidence that the portable long service leave levy has been paid

Not applicable (e.g. building and construction work is less than \$150,000 excluding GST)

Amount paid	Date paid (dd/mm/yy)	QLeave levy number (A, B or E)
\$		NA

22) Is this development application in response to a show cause notice or required as a result of an enforcement notice?

Yes – show cause or enforcement notice is attached

No

23) Further legislative requirements

Environmentally relevant activities

23.1) Is this development application also taken to be an application for an environmental authority for an **Environmentally Relevant Activity (ERA)** under section 115 of the *Environmental Protection Act 1994*?

- Yes – the required attachment (form ESR/2015/1791) for an application for an environmental authority accompanies this development application, and details are provided in the table below
- No

Note: Application for an environmental authority can be found by searching "ESR/2015/1791" as a search term at www.qld.gov.au. An ERA requires an environmental authority to operate. See www.business.qld.gov.au for further information.

Proposed ERA number:		Proposed ERA threshold:	
Proposed ERA name:			

- Multiple ERAs are applicable to this development application and the details have been attached in a schedule to this development application.

Hazardous chemical facilities

23.2) Is this development application for a **hazardous chemical facility**?

- Yes – *Form 536: Notification of a facility exceeding 10% of schedule 15 threshold* is attached to this development application
- No

Note: See www.business.qld.gov.au for further information about hazardous chemical notifications.

Clearing native vegetation

23.3) Does this development application involve **clearing native vegetation** that requires written confirmation that the chief executive of the *Vegetation Management Act 1999* is satisfied the clearing is for a relevant purpose under section 22A of the *Vegetation Management Act 1999*?

- Yes – this development application includes written confirmation from the chief executive of the *Vegetation Management Act 1999* (s22A determination)
- No

Note: 1. Where a development application for operational work or material change of use requires a s22A determination and this is not included, the development application is prohibited development.
2. See <https://www.qld.gov.au/environment/land/vegetation/applying> for further information on how to obtain a s22A determination.

Environmental offsets

23.4) Is this development application taken to be a prescribed activity that may have a significant residual impact on a **prescribed environmental matter** under the *Environmental Offsets Act 2014*?

- Yes – I acknowledge that an environmental offset must be provided for any prescribed activity assessed as having a significant residual impact on a prescribed environmental matter
- No

Note: The environmental offset section of the Queensland Government's website can be accessed at www.qld.gov.au for further information on environmental offsets.

Koala habitat in SEQ Region

23.5) Does this development application involve a material change of use, reconfiguring a lot or operational work which is assessable development under Schedule 10, Part 10 of the Planning Regulation 2017?

- Yes – the development application involves premises in the koala habitat area in the koala priority area
- Yes – the development application involves premises in the koala habitat area outside the koala priority area
- No

Note: If a koala habitat area determination has been obtained for this premises and is current over the land, it should be provided as part of this development application. See koala habitat area guidance materials at www.desi.qld.gov.au for further information.



Water resources

23.6) Does this development application involve **taking or interfering with underground water through an artesian or subartesian bore, taking or interfering with water in a watercourse, lake or spring, or taking overland flow water under the *Water Act 2000***?

Yes – the relevant template is completed and attached to this development application and I acknowledge that a relevant authorisation or licence under the *Water Act 2000* may be required prior to commencing development

No

Note: Contact the Department of Resources at www.resources.qld.gov.au for further information.

DA templates are available from planning.statedevelopment.qld.gov.au. If the development application involves:

- Taking or interfering with underground water through an artesian or subartesian bore: complete DA Form 1 Template 1
- Taking or interfering with water in a watercourse, lake or spring: complete DA Form 1 Template 2
- Taking overland flow water: complete DA Form 1 Template 3.

Waterway barrier works

23.7) Does this application involve **waterway barrier works**?

Yes – the relevant template is completed and attached to this development application

No

DA templates are available from planning.statedevelopment.qld.gov.au. For a development application involving waterway barrier works, complete DA Form 1 Template 4.

Marine activities

23.8) Does this development application involve **aquaculture, works within a declared fish habitat area or removal, disturbance or destruction of marine plants**?

Yes – an associated *resource* allocation authority is attached to this development application, if required under the *Fisheries Act 1994*

No

Note: See guidance materials at www.daf.qld.gov.au for further information.

Quarry materials from a watercourse or lake

23.9) Does this development application involve the **removal of quarry materials from a watercourse or lake under the *Water Act 2000***?

Yes – I acknowledge that a quarry material allocation notice must be obtained prior to commencing development

No

Note: Contact the Department of Resources at www.resources.qld.gov.au and www.business.qld.gov.au for further information.

Quarry materials from land under tidal waters

23.10) Does this development application involve the **removal of quarry materials from land under tidal water under the *Coastal Protection and Management Act 1995***?

Yes – I acknowledge that a quarry material allocation notice must be obtained prior to commencing development

No

Note: Contact the Department of Environment, Science and Innovation at www.desi.qld.gov.au for further information.

Referable dams

23.11) Does this development application involve a **referable dam** required to be failure impact assessed under section 343 of the *Water Supply (Safety and Reliability) Act 2008* (the *Water Supply Act*)?

Yes – the 'Notice Accepting a Failure Impact Assessment' from the chief executive administering the *Water Supply Act* is attached to this development application

No

Note: See guidance materials at www.resources.qld.gov.au for further information.



Tidal work or development within a coastal management district

23.12) Does this development application involve **tidal work or development in a coastal management district**?

- Yes – the following is included with this development application:
- Evidence the proposal meets the code for assessable development that is prescribed tidal work (*only required if application involves prescribed tidal work*)
 - A certificate of title

No

Note: See guidance materials at www.desi.qld.gov.au for further information.

Queensland and local heritage places

23.13) Does this development application propose development on or adjoining a place entered in the **Queensland heritage register** or on a place entered in a local government's **Local Heritage Register**?

Yes – details of the heritage place are provided in the table below

No

Note: See guidance materials at www.desi.qld.gov.au for information requirements regarding development of Queensland heritage places. For a heritage place that has cultural heritage significance as a local heritage place and a Queensland heritage place, provisions are in place under the Planning Act 2016 that limit a local categorising instrument from including an assessment benchmark about the effect or impact of, development on the stated cultural heritage significance of that place. See guidance materials at www.planning.statedevelopment.qld.gov.au for information regarding assessment of Queensland heritage places.

Name of the heritage place:

Place ID:

Decision under section 62 of the Transport Infrastructure Act 1994

23.14) Does this development application involve new or changed access to a state-controlled road?

Yes – this application will be taken to be an application for a decision under section 62 of the *Transport Infrastructure Act 1994* (subject to the conditions in section 75 of the *Transport Infrastructure Act 1994* being satisfied)

No

Walkable neighbourhoods assessment benchmarks under Schedule 12A of the Planning Regulation

23.15) Does this development application involve reconfiguring a lot into 2 or more lots in certain residential zones (except rural residential zones), where at least one road is created or extended?

Yes – Schedule 12A is applicable to the development application and the assessment benchmarks contained in schedule 12A have been considered

No

Note: See guidance materials at www.planning.statedevelopment.qld.gov.au for further information.

PART 8 – CHECKLIST AND APPLICANT DECLARATION

24) Development application checklist

I have identified the assessment manager in question 15 and all relevant referral requirement(s) in question 17

Yes

Note: See the *Planning Regulation 2017* for referral requirements

If building work is associated with the proposed development, Parts 4 to 6 of [DA Form 2 – Building work details](#) have been completed and attached to this development application

Yes

Not applicable

Supporting information addressing any applicable assessment benchmarks is with the development application

Note: This is a mandatory requirement and includes any relevant templates under question 23, a planning report and any technical reports required by the relevant categorising instruments (e.g. local government planning schemes, State Planning Policy, State Development Assessment Provisions). For further information, see [DA Forms Guide: Planning Report Template](#).

Yes

Relevant plans of the development are attached to this development application

Yes



Note: Relevant plans are required to be submitted for all aspects of this development application. For further information, see [DA Forms Guide: Relevant plans](#).

The portable long service leave levy for QLeave has been paid, or will be paid before a development permit is issued (see 21) Yes Not applicable

25) Applicant declaration

- By making this development application, I declare that all information in this development application is true and correct
- Where an email address is provided in Part 1 of this form, I consent to receive future electronic communications from the assessment manager and any referral agency for the development application where written information is required or permitted pursuant to sections 11 and 12 of the *Electronic Transactions Act 2001*

Note: It is unlawful to intentionally provide false or misleading information.

Privacy – Personal information collected in this form will be used by the assessment manager and/or chosen assessment manager, any relevant referral agency and/or building certifier (including any professional advisers which may be engaged by those entities) while processing, assessing and deciding the development application. All information relating to this development application may be available for inspection and purchase, and/or published on the assessment manager’s and/or referral agency’s website.

Personal information will not be disclosed for a purpose unrelated to the *Planning Act 2016*, Planning Regulation 2017 and the DA Rules except where:

- such disclosure is in accordance with the provisions about public access to documents contained in the *Planning Act 2016* and the Planning Regulation 2017, and the access rules made under the *Planning Act 2016* and Planning Regulation 2017; or
- required by other legislation (including the *Right to Information Act 2009*); or
- otherwise required by law.

This information may be stored in relevant databases. The information collected will be retained as required by the *Public Records Act 2002*.

PART 9 – FOR COMPLETION OF THE ASSESSMENT MANAGER – FOR OFFICE USE ONLY

Date received: Reference number(s):

Notification of engagement of alternative assessment manager

Prescribed assessment manager	
Name of chosen assessment manager	
Date chosen assessment manager engaged	
Contact number of chosen assessment manager	
Relevant licence number(s) of chosen assessment manager	

QLeave notification and payment

Note: For completion by assessment manager if applicable

Description of the work	
QLeave project number	
Amount paid (\$)	Date paid (dd/mm/yy)
Date receipted form sighted by assessment manager	
Name of officer who sighted the form	

Referral checklist for building work

This referral checklist is required where any aspect of building work for a development application requires referral as identified in *DA Form 2 – Building work details*.

All relevant referral requirements for the development application are to be identified on this checklist. This checklist is to accompany *DA Form 2 – Building work details* for all development applications for building work that require referral.

Note: All terms used within the forms have the meaning given under the *Planning Act 2016*, the *Planning Regulation 2017*, or the *Development Assessment Rules (DA Rules)*.

1) Referral requirements relevant to any building work identified on *DA Form 2 – Building work details*

Note: The *Planning Regulation 2017* will determine if referral is required for a development application.

Matters requiring referral to the **Chief Executive of the *Planning Act 2016***:

- Premises seaward of coastal building line
- Declared fish habitat area
- State transport corridor
- Future State transport corridor
- Queensland heritage place
- Koala habitat in SEQ region

Matters requiring referral to the **local government**:

- Particular class 1 and 10 buildings and structures involving possible amenity and aesthetic impacts
- Particular buildings for residential purposes
- Design and siting
- Fire safety in particular budget accommodation buildings
- Higher risk personal appearance services
- Building work for residential services
- Building work for removal or rebuilding
- Building work for particular class 1 buildings relating to material change of use
- Temporary accommodation buildings
- Building work relating to end of trip facilities for Queensland Development Code, part 4.1
- Building work for class 1 building on premises with on-site wastewater management system
- Flood hazard area
- Local heritage place

Matters requiring referral to the **Queensland Fire and Emergency Service**:

- Fire safety systems – special fire services required or alternative solution proposed
- Fire safety systems – budget accommodation building
- Fire safety systems – residential care building
- Water-based fire safety installations
- Fire safety for farm buildings

Matters requiring referral to **Safe Food Production QLD**:

- Retail meat premises

Matters requiring referral to the **Chief Health Officer under the *Hospital and Health Boards Act 2011***:

- Private health facilities

Matters requiring referral to the **Chief Executive of the *Pastoral Workers' Accommodation Act 1980***:

- Pastoral workers' accommodation

Matters requiring referral to the **relevant service provider**:

- Building work over or near relevant infrastructure relating to Queensland Development Code, part 1.4

DA Form 2 – Building work details

Approved form (version 1.2 effective 7 February 2020) made under Section 282 of the Planning Act 2016.

This form **must** be used to make a development application **involving building work**.

For a development application involving **building work only**, use this form (DA Form 2) only. The DA Forms Guide provides advice about how to complete this form.

For a development application involving **building work associated and any other type of assessable development** (i.e. material change of use, operational work or reconfiguring a lot), use *DA Form 1 – Development application details* and parts 4 to 6 of this form (DA Form 2).

Unless stated otherwise, all parts of this form **must** be completed in full and all required supporting information **must** accompany the development application.

One or more additional pages may be attached as a schedule to this development application if there is insufficient space on the form to include all the necessary information.

This form and any other form relevant to the development application must be used to make a development application relating to strategic port land and Brisbane core port land under the *Transport Infrastructure Act 1994*, and airport land under the *Airport Assets (Restructuring and Disposal) Act 2008*. For the purpose of assessing a development application relating to strategic port land and Brisbane core port land, any reference to a planning scheme is taken to mean a land use plan for the strategic port land, Brisbane port land use plan for Brisbane core port land, or a land use plan for airport land.

Note: All terms used in this form have the meaning given under the Planning Act 2016, the Planning Regulation 2017, or the Development Assessment Rules (DA Rules).

PART 1 – APPLICANT DETAILS

1) Applicant details	
Applicant name(s) (individual or Company full name)	Denise Brennan Angel Construction C/- Buildable Approvals Pty Ltd
Contact name (only applicable for companies)	Jess Burton
Postal Address (PO Box or street Address)	Suite 2.7, 2 Chelsea Lane
Suburb	Redlynch
State	QLD
Postcode	4870
Country	Australia
Contact number	07 4222 9899
Email Address (non-mandatory)	nqcommercial@buildable.com.au
Mobile number (non-mandatory)	
Fax number (non-mandatory)	
Applicant's reference number(s) (if applicable)	202511383

PART 2 – LOCATION DETAILS

2) Location of the premises (complete 2.1 and 2.2 if applicable)

Note: Provide details below and attach a site plan for any or all premises part of the development application. For further information, see [DA Forms Guide: Relevant plans](#).

2.1) Street Address and lot on plan

- Street Address **AND** lot on plan (all lots must be listed), **or**
 Street Address **AND** lot on plan for an adjoining or adjacent property of the premises (appropriate for development in water but adjoining or adjacent to land e.g. jetty, pontoon. All lots must be listed).

Unit No.	Street No.	Street Name and Type	Suburb
	29	Barrier Street	Port Douglas

Postcode	Lot No.	Plan Type and Number (e.g. RP, SP)	Local Government Area(s)
4877	13	SP144732	Douglas Shire Council

2.2) Additional premises

- Additional premises are relevant to this development application and the details of these premises have been attached in a schedule to this development application
- Not required

3) Are there any existing easements over the premises?

Note: Easement uses vary throughout Queensland and are to be identified correctly and accurately. For further information on easements and how they may affect the proposed development, see the [DA Forms Guide](#)

- Yes – All easement locations, types and dimensions are included in plans submitted with this development application
- No

PART 3 – FURTHER DETAILS

4) Is the application only for building work assessable against the building assessment provisions?

- Yes – proceed to 8)
- No

5) Identify the assessment manager(s) who will be assessing this development application

Douglas Shire Council

6) Has the local government agreed to apply a superseded planning scheme for this development application?

- Yes – a copy of the decision notice is attached to this development application
- The local government is taken to have agreed to the superseded planning scheme request – relevant documents attached
- No

7) Information request under Part 3 of the DA Rules

- I agree to receive an information request if determined necessary for this development application
- I do not agree to accept an information request for this development application

Note: By not agreeing to accept an information request I, the applicant, acknowledge:

- that this development application will be assessed and decided based on the information provided when making this development application and the assessment manager and any referral agencies relevant to the development application are not obligated under the DA Rules to accept any additional information provided by the applicant for the development application unless agreed to by the relevant parties.
- Part 3 of the DA Rules will still apply if the application is an application listed under section 11.3 of the DA Rules.

Further advice about information requests is contained in the [DA Forms Guide](#).

8) Are there any associated development applications or current approvals?

- Yes – provide details below or include details in a schedule to this development application
- No

List of approval/development application	Reference	Date	Assessment manager
<input type="checkbox"/> Approval			
<input type="checkbox"/> Development application			

9) Has the portable long service leave levy been paid?

- Yes – a copy of the receipted QLeave form is attached to this development application

<input type="checkbox"/> No – I, the applicant will provide evidence that the portable long service leave levy has been paid before the assessment manager decides the development application. I acknowledge that the assessment manager may give a development approval only if I provide evidence that the portable long service leave levy has been paid <input checked="" type="checkbox"/> Not applicable (e.g. building and construction work is less than \$150,000 excluding GST)		
Amount paid	Date paid (dd/mm/yy)	QLLeave levy number (A, B or E)
		NA

10) Is this development application in response to a show cause notice or required as a result of an enforcement notice?

Yes – show cause or enforcement notice is attached
 No

11) Identify any of the following further legislative requirements that apply to any aspect of this development application

The proposed development is on a place entered in the **Queensland Heritage Register** or in a local government's **Local Heritage Register**. See the guidance provided at www.des.qld.gov.au about the requirements in relation to the development of a Queensland heritage place

Name of the heritage place:		Place ID:	
-----------------------------	--	-----------	--

PART 4 – REFERRAL DETAILS

12) Does this development application include any building work aspects that have any referral requirements?

Yes – the *Referral checklist for building work* is attached to this development application
 No – proceed to Part 5

13) Has any referral agency provided a referral response for this development application?

Yes – referral response(s) received and listed below are attached to this development application
 No

Referral requirement	Referral agency	Date referral response
Relaxation	Douglas Shire Council	

Identify and describe any changes made to the proposed development application that was the subject of the referral response and this development application, or include details in a schedule to this development application (if applicable)

PART 5 – BUILDING WORK DETAILS

14) Owner's details

Tick if the applicant is also the owner and proceed to 15). Otherwise, provide the following information.

Name(s) (individual or Company full name)	Vincenzo Di Cugno
Contact name (applicable for companies)	Vincenzo Di Cugno
Postal Address (P.O. Box or street Address)	29 Barrier Street
Suburb	Port Douglas
State	QLD
Postcode	4877
Country	Australia
Contact number	07 3472 6987
Email Address (non-mandatory)	dicugnovincenzo@gmail.com
Mobile number (non-mandatory)	0432 740 598

Fax number (non-mandatory)	
----------------------------	--

15) Builder's details

Tick if a builder has not yet been engaged to undertake the work and proceed to 16). Otherwise provide the following information.

Name(s) (individual or Company full name)	
Contact name (applicable for companies)	Adrian Whittaker
QBCC licence or owner – builder number	15046978
Postal Address (P.O. Box or street Address)	32 Macrossan Street
Suburb	Port Douglas
State	QLD
Postcode	4877
Contact number	
Email Address (non-mandatory)	info@angelconstruction.com.au
Mobile number (non-mandatory)	0438 729 329
Fax number (non-mandatory)	

16) Provide details about the proposed building work

What type of approval is being sought?			
<input checked="" type="checkbox"/> Development permit			
<input type="checkbox"/> Preliminary approval			
b) What is the level of assessment?			
<input checked="" type="checkbox"/> Code assessment			
<input type="checkbox"/> Impact assessment (requires public notification)			
c) Nature of the proposed building work (tick all applicable boxes)			
<input checked="" type="checkbox"/> New building or structure		<input type="checkbox"/> Repairs, alterations or additions	
<input type="checkbox"/> Change of Building Classification (involving building work)		<input type="checkbox"/> Relocation or removal	
<input type="checkbox"/> Demolition		<input type="checkbox"/> Swimming Pool and/ or pool fence	
d) Provide a description of the work below or in an attached schedule.			
Carport			
e) Proposed construction materials			
External walls	<input type="checkbox"/> Double Brick <input type="checkbox"/> Brick Veneer <input type="checkbox"/> Stone/concrete	<input type="checkbox"/> Steel <input type="checkbox"/> Timber <input type="checkbox"/> Fibre cement	<input type="checkbox"/> Curtain glass <input type="checkbox"/> Aluminium <input type="checkbox"/> Other
Frame	<input type="checkbox"/> Timber <input type="checkbox"/> Other	<input type="checkbox"/> Steel	<input type="checkbox"/> Aluminium
Floor	<input type="checkbox"/> Concrete	<input type="checkbox"/> Timber	<input type="checkbox"/> Other
Roof covering	<input type="checkbox"/> Slate/Concrete <input type="checkbox"/> Aluminium	<input type="checkbox"/> Tiles <input type="checkbox"/> Steel	<input type="checkbox"/> Fibre cement <input type="checkbox"/> Other
f) Existing building use/classification? (if applicable)			
g) New building use/classification? (if applicable)			
10a			
h) Relevant plans			
Note: Relevant plans are required to be submitted for all aspects of this development application. For further information, see DA Forms Guide: Relevant plans .			

Relevant plans of the proposed works are attached to the development application

17) What is the monetary value of the proposed building work?

18) Has Queensland Home Warranty Scheme Insurance been paid?

Yes – provide details below

No

Amount paid	Date paid (dd/mm/yy)	Reference number
		NA

PART 6 – CHECKLIST AND APPLICANT DECLARATION

19) Development application checklist

- | | |
|--------------------------------------------------------------------------------------------------------------------------------------------------------------------------------------------------------------------------------------------------------------------------|------------------------------------------------------------------------------------|
| The relevant parts of <i>Form 2 – Building work details</i> have been completed | <input checked="" type="checkbox"/> Yes |
| This development application includes a material change of use, reconfiguring a lot or operational work and is accompanied by a completed <i>Form 1 – Development application details</i> | <input type="checkbox"/> Yes
<input checked="" type="checkbox"/> Not applicable |
| Relevant plans of the development are attached to this development application
<i>Note: Relevant plans are required to be submitted for all aspects of this development application. For further information, see DA Forms Guide: Relevant plans.</i> | <input checked="" type="checkbox"/> Yes |
| The portable long service leave levy for QLeave has been paid, or will be paid before a development permit is issued (<i>see 9</i>) | <input type="checkbox"/> Yes
<input checked="" type="checkbox"/> Not applicable |

20) Applicant declaration

By making this development application, I declare that all information in this development application is true and correct

Where an Email Address is provided in Part 1 of this form, I consent to receive future electronic communications from the assessment manager and any referral agency for the development application where written information is required or permitted pursuant to sections 11 and 12 of the *Electronic Transactions Act 2001*

Note: It is unlawful to intentionally provide false or misleading information.

Privacy – Personal information collected in this form will be used by the assessment manager and/or chosen assessment manager, any referral agency and/or building certifier (including any professional advisers which may be engaged by those entities) while processing, assessing and deciding the development application. All information relating to this development application may be available for inspection and purchase, and/or published on the assessment manager's and/or referral agency's website. Personal information will not be disclosed for a purpose unrelated to the *Planning Act 2016*, *Planning Regulation 2017* and the *DA Rules* except where:

- such disclosure is in accordance with the provisions about public access to documents contained in the *Planning Act 2016* and the *Planning Regulation 2017*, and the access rules made under the *Planning Act 2016* and *Planning Regulation 2017*; or
- required by other legislation (including the *Right to Information Act 2009*); or
- otherwise required by law.

This information may be stored in relevant databases. The information collected will be retained as required by the *Public Records Act 2002*.

PART 7 – FOR COMPLETION BY THE ASSESSMENT MANAGER – FOR OFFICE USE ONLY

Date received: Reference numbers:

For completion by the building certifier

Classification(s) of approved building work

10a		
Name	QBCC Certification Licence number	QBCC Insurance receipt number
Jess Burton	A15316233	NA

Notification of engagement of alternative assessment manager	
Prescribed assessment manager	
Name of chosen assessment manager	
Date chosen assessment manager engaged	
Contact number of chosen assessment manager	
Relevant licence number(s) of chosen assessment manager	

Additional information required by the local government			
Confirm proposed construction materials:			
External walls	<input type="checkbox"/> Double Brick <input type="checkbox"/> Brick Veneer <input type="checkbox"/> Stone/concrete	<input type="checkbox"/> Steel <input type="checkbox"/> Timber <input type="checkbox"/> Fibre cement	<input type="checkbox"/> Curtain glass <input type="checkbox"/> Aluminium <input type="checkbox"/> Other
Frame	<input type="checkbox"/> Timber <input type="checkbox"/> Other	<input type="checkbox"/> Steel	<input type="checkbox"/> Aluminium
Floor	<input type="checkbox"/> Concrete	<input type="checkbox"/> Timber	<input type="checkbox"/> Other
Roof covering	<input type="checkbox"/> Slate/concrete <input type="checkbox"/> Aluminium	<input type="checkbox"/> Tiles <input type="checkbox"/> Steel	<input type="checkbox"/> Fibre cement <input type="checkbox"/> Other

QLeave notification and payment			
<i>Note: For completion by assessment manager if applicable</i>			
Description of the work		Carport	
QLeave project number		NA	
Amount paid (\$)		Date paid (dd/mm/yy)	
Date received form sighted by assessment manager			
Name of officer who sighted the form		Jess Burton	

Additional building details required for the Australian Bureau of Statistics			
Existing building use/classification? (if applicable)			
New building use/classification?		10a	
Site area (m ²)	801	Floor area (m ²)	55.00