

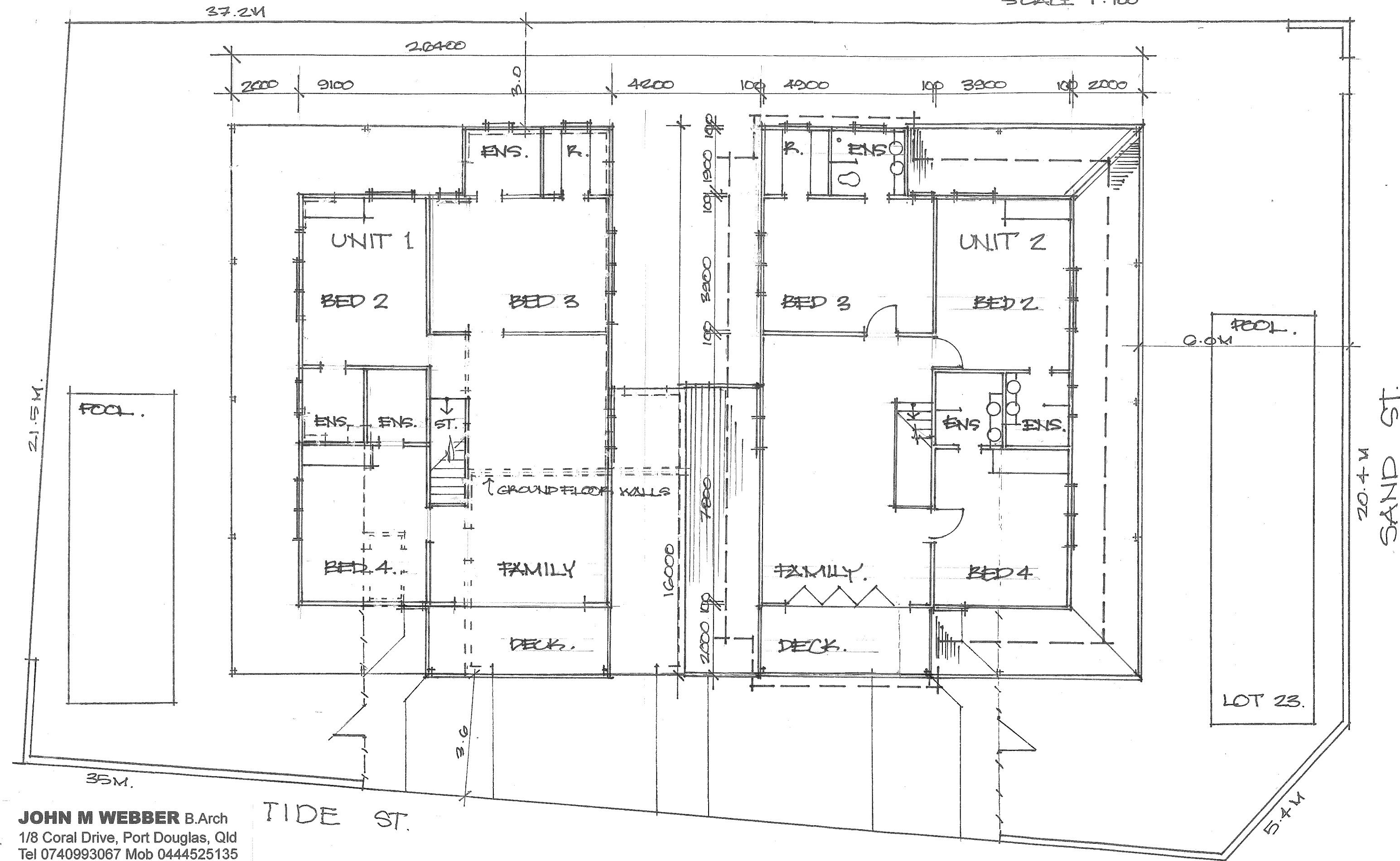
0 1 2 3 4 5 6 7 8 9 10  
SCALE 1:100



**JOHN M WEBBER** B.Arch  
1/8 Coral Drive, Port Douglas, Qld  
Tel 0740993067 Mob 0444525135  
jm.webber@hotmail.com

# DUPLEX DEVELOPMENT FOR PARKER SUPER FUND - FIRST FLOOR PLAN

0 1 2 3 4 5 6 7 8 9 10  
SCALE 1:100

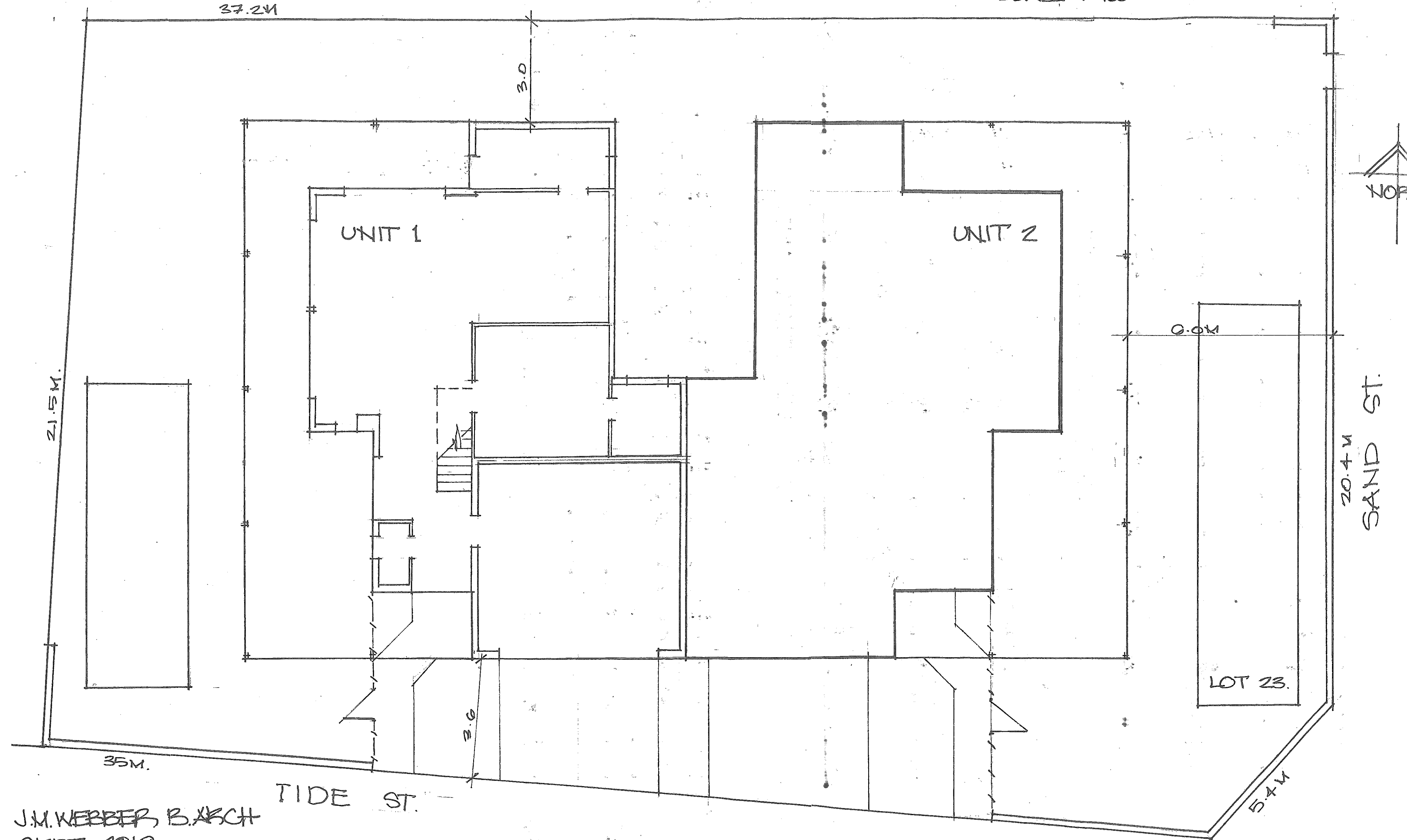


**JOHN M WEBBER** B.Arch  
1/8 Coral Drive, Port Douglas, Qld  
Tel 0740993067 Mob 0444525135  
jm.webber@hotmail.com

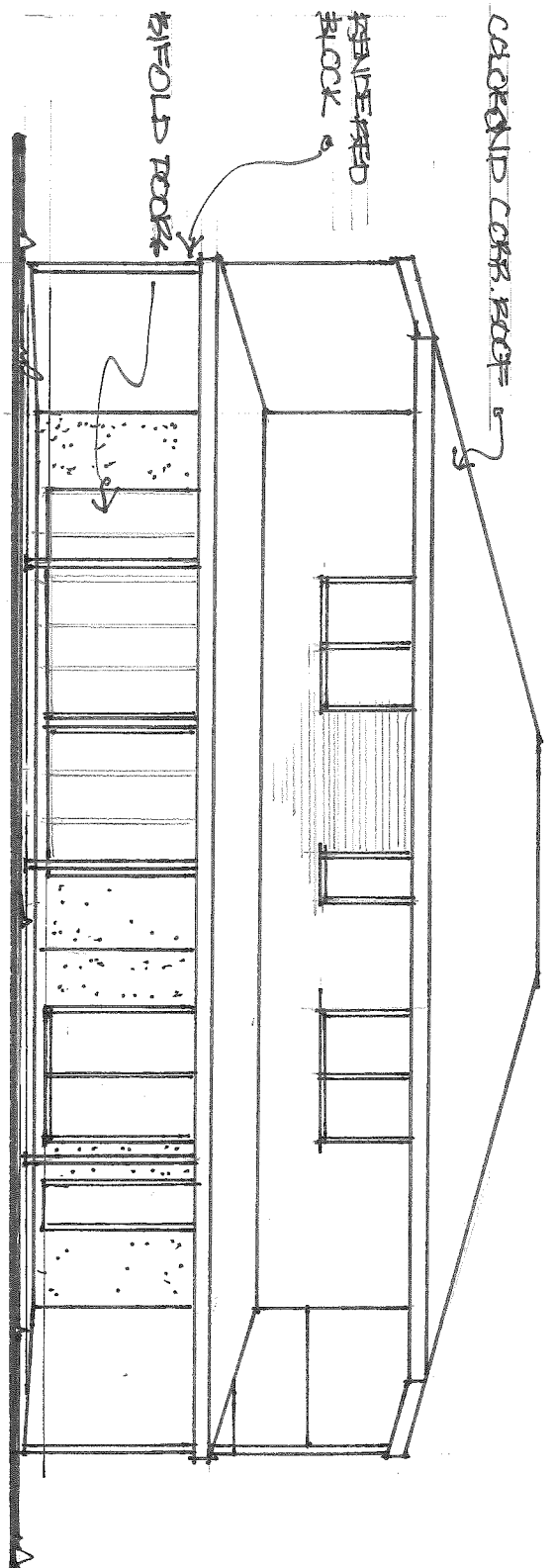
DUPLE DEVELOPMENT AT  
23 SAND ST. PORT DOUGLAS

# DUPLEX DEVELOPMENT FOR PARKER SUPER FUND

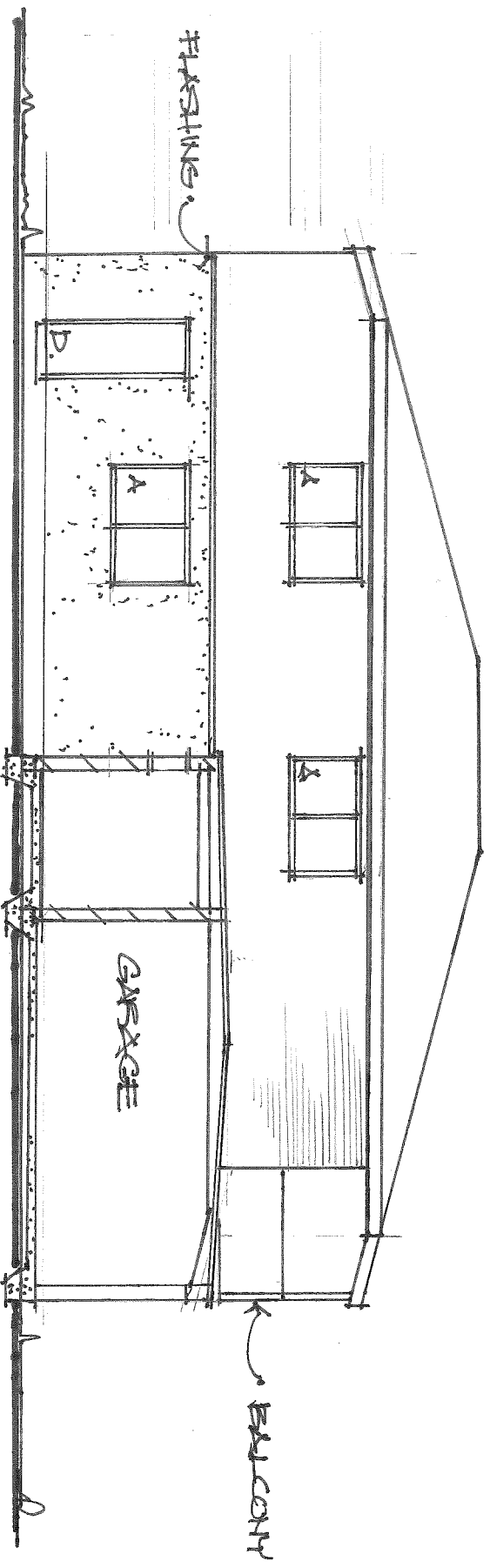
0 1 2 3 4 5 6 7 8 9 10  
SCALE 1:100



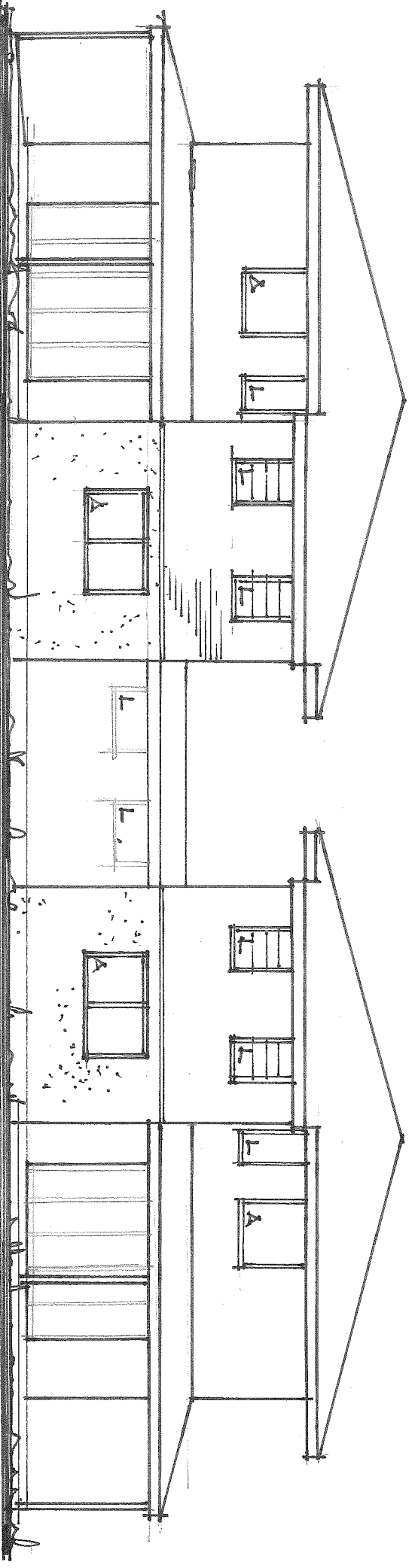
J.M. WEBBER B. ARCH  
SEPT. 2019



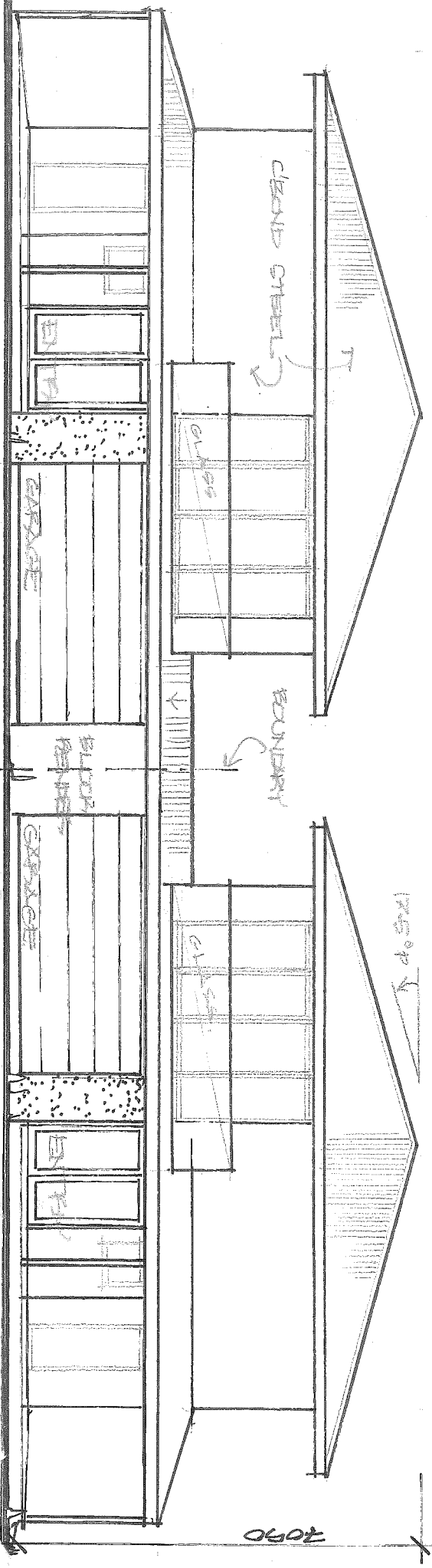
WEST ELEVATION UNIT 1.



WEST ELEVATION UNIT 2.



NORTH ELEVATION



UNIT 1.

UNIT 2.

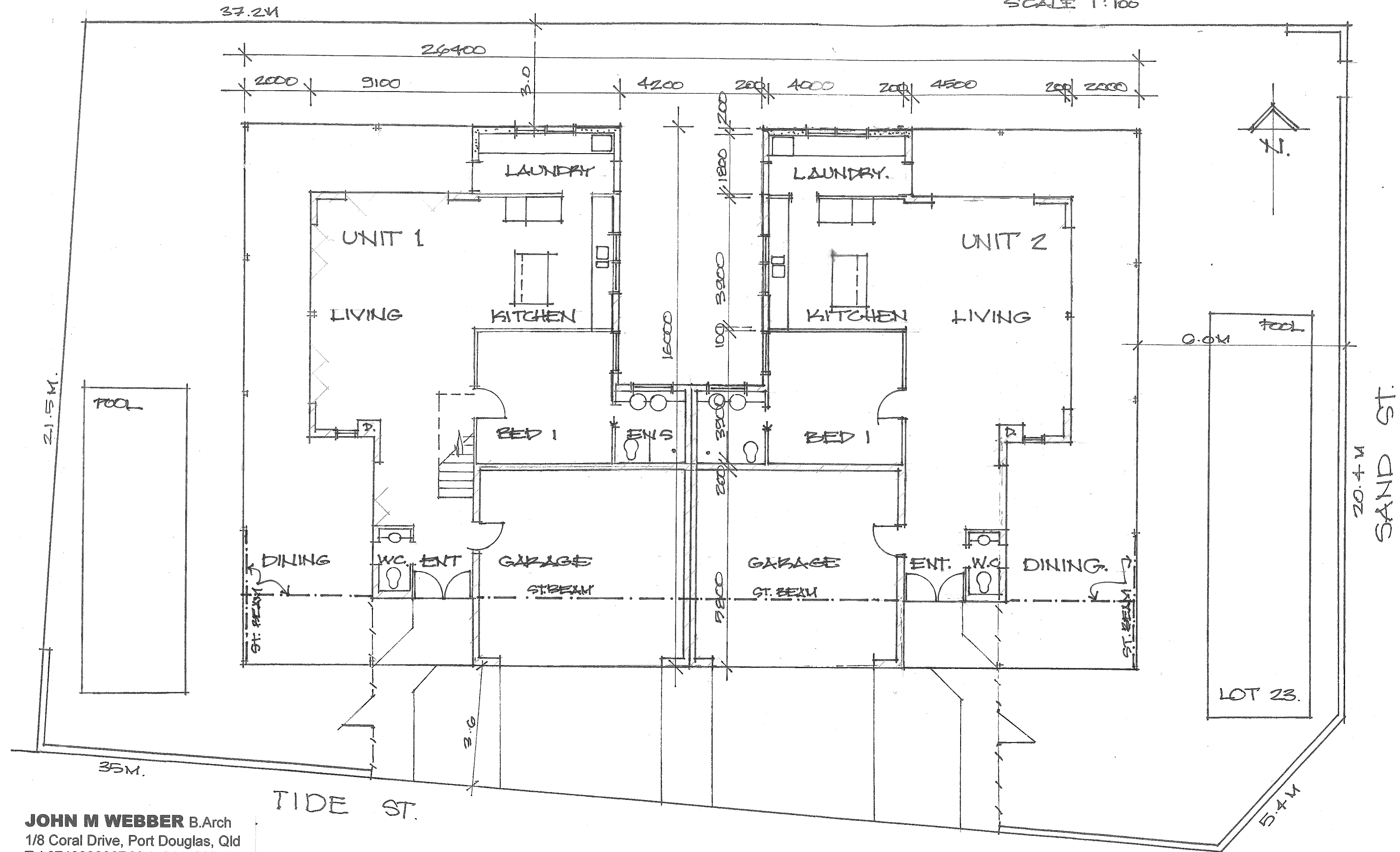
SOUTH ELEVATION SCALE 1:100



DUPLEX DEVELOPMENT FOR THE  
PARKER SUPERFUND, 23 SAND ST.  
PORT DOUGLAS. QLD 4877

# DUPLEX DEVELOPMENT FOR PARKER SUPER FUND - GROUND FLOOR PLAN

0 1 2 3 4 5 6 7 8 9 10  
SCALE 1:100



**JOHN M WEBBER** B.Arch  
1/8 Coral Drive, Port Douglas, Qld  
Tel 0740993067 Mob 0444525135  
jm.webber@hotmail.com

DUPLEX DEVELOPMENT AT  
23 SAND ST. PORT DOUGLAS.

