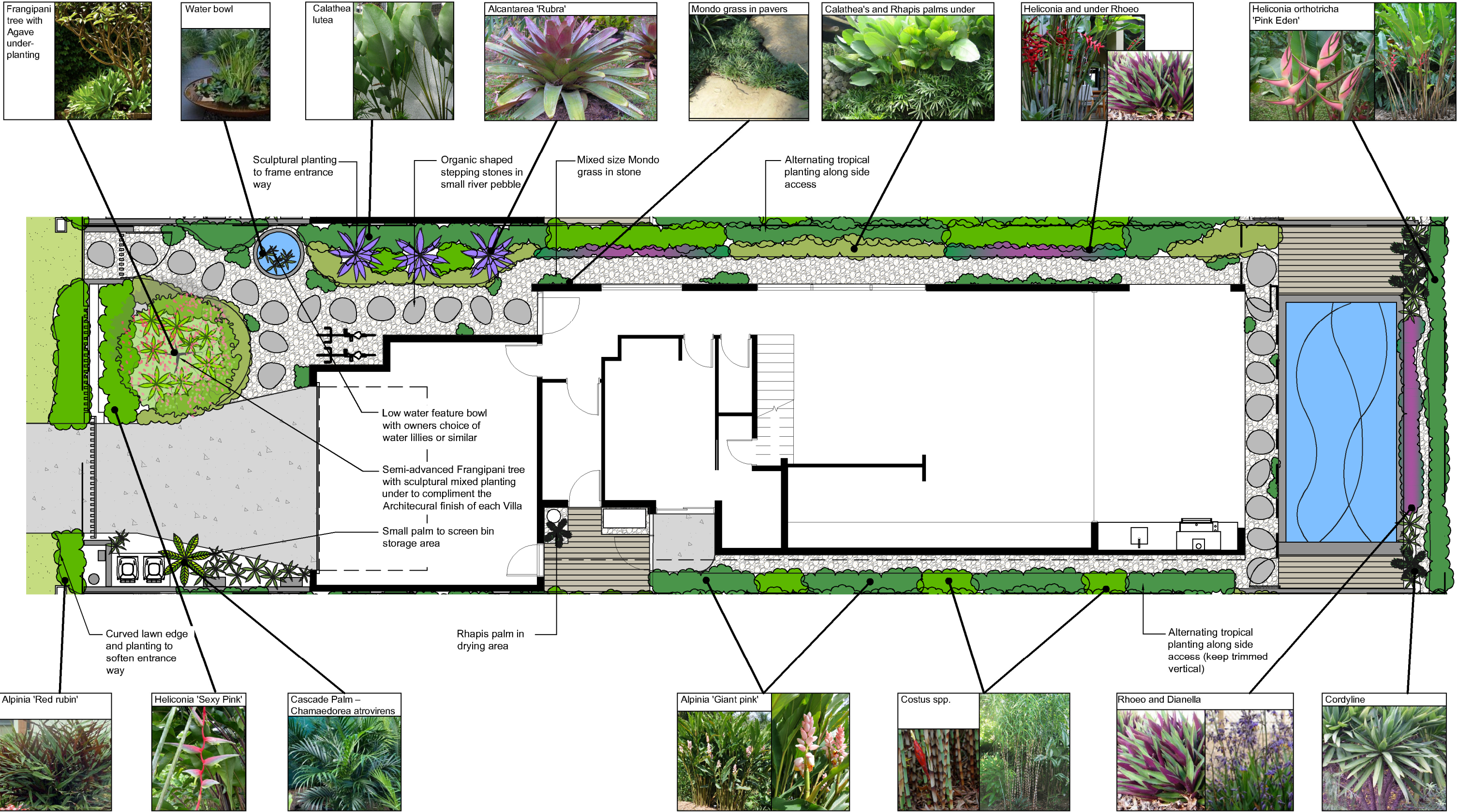


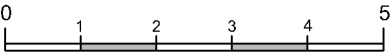
Overall landscape plan - Ground floor 1:100 @ A1



Detail plan - Ground floor (typical for all four villas) 1:50 @ A1



Scale: 1:50 @ A1



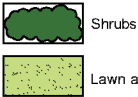
Name: Landscape concept plan
Job: 87-89 Davidson Street, P.D
Date: 28.12.21 Issue no: A
Scale: 1:50@A1 Page: 2 of 4



Legend

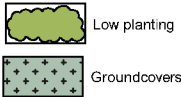


Proposed palms



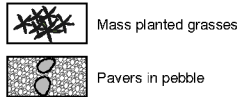
Shrubs

Lawn areas



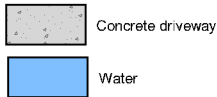
Low planting

Groundcovers



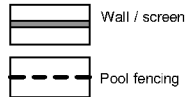
Mass planted grasses

Pavers in pebble



Concrete driveway

Water

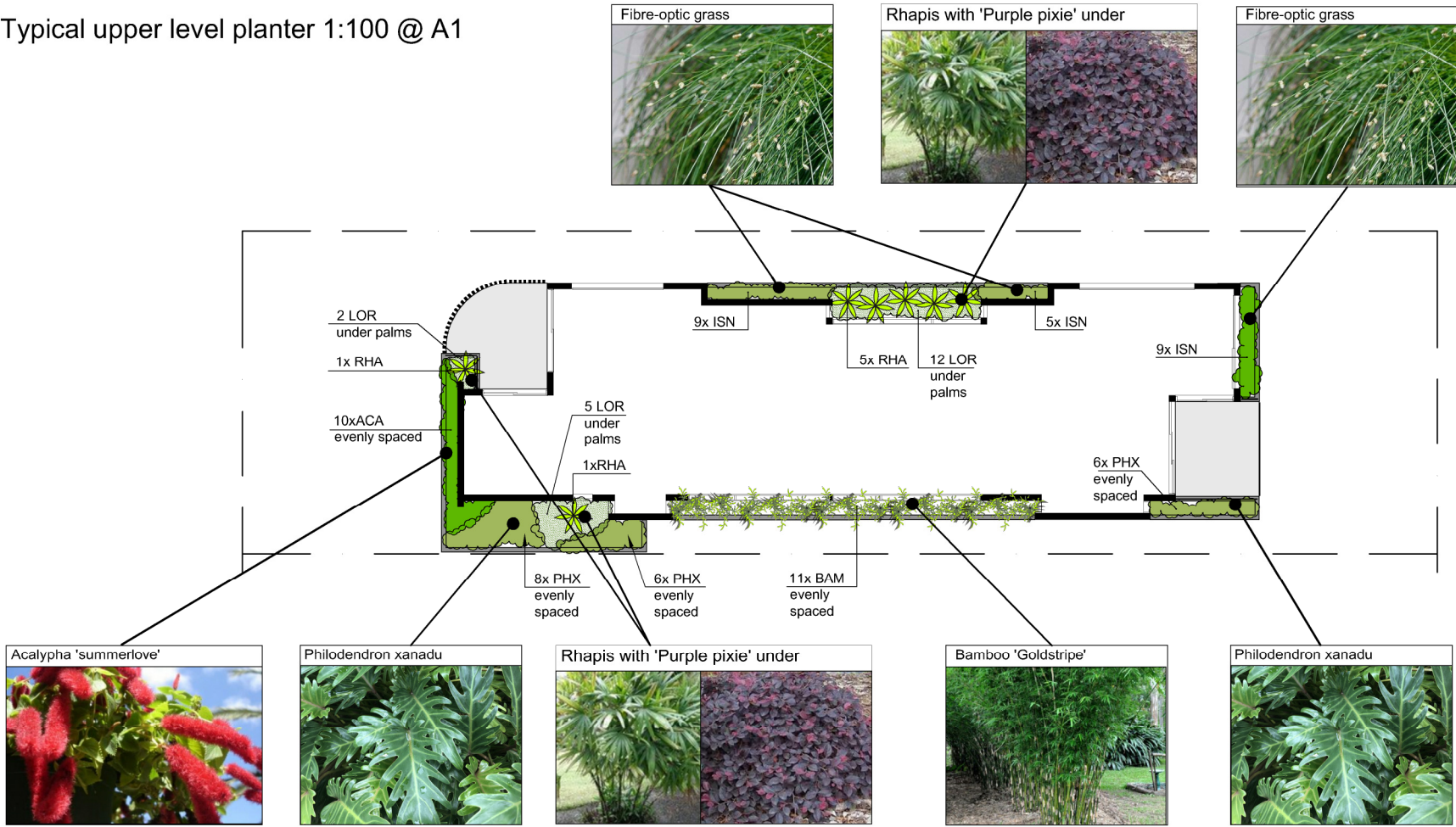


Wall / screen

Pool fencing

kate hewitt
LANDSCAPE DESIGN

Typical upper level planter 1:100 @ A1



Planting schedule – Upper level

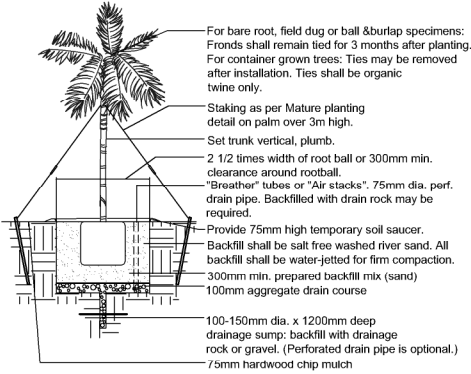
Symbol	Botanical name	Common name	Cont. size	Mature height	Spacing	No req.
Ferns / Palms / Accent Plants / Bamboo						
BAM	Bambusa multiplex 'Goldstripe'	Goldstripe Bamboo	300mm	1.5-3M	1000mm	0
RHA	Raphis excelsor	Lady Finger Palm	300mm	2-2.5M	As shown	0
Groundcovers / Climbers						
ACA	Acalypha reptans	Summer Love	150mm	0.5M	600mm	0
LOR	Loropetalum chinense	Purple pixie	150mm	0.3M	400mm	0
Ornamental grasses/strappy leaved plants						
ISN	Isolepis cernua	Fibre Optic Grass	150mm	0.6M	400mm	0
PHX	Philodendron 'Xanadu'	Xanadu (shade tolerant understory / border plant)	200mm	0.4M	600mm	0

Planting schedule species to be sourced from local nurseries supplying plants of local provenance wherever possible. Numbers are exact. If unsure please contact Landscape Designer. Container sizes may vary due to availability, in most cases please ensure a size that will work for this site.

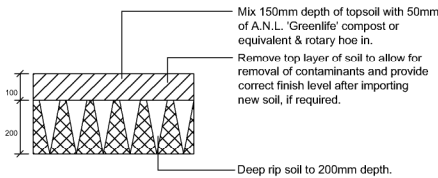
Notes

- Soil preparation**
All proposed plant beds to be stripped of 150mm of soil and topped with at least 200mm of soil (preferably local)
- New plantings**
Newly planted trees and large shrubs should be secured to stakes to prevent any damage.
Planting holes for plant material should be large enough in size to take root ball with additional space to take back filling of good quality planting mix.
- Turf / lawn**
Lay turf on prepared leveled soil. Ensure drainage is correct.
Use locally available suitable turf mix.
Curved steel edging (or similar) to be confirmed and chosen by owner.
- Stepping stones**
Stepping stones in (10-20mm river gravel) pebble. Laid to a depth of 150mm over a thin layer of geo-textile.
Refer to Architects details for stepping stones specifications and details
- Mulching**
All planting areas to be mulched with a minimum 75mm thick cover of recycled hardwood mulch and then all plant areas to be thoroughly soaked with water. All mulch shall be free of all weed species
- Fertiliser**
All planting areas to be fertilised with slow release fertiliser.
- Engineering**
All structural and hydraulic details whatsoever to Architects details.
- Maintenance**
The Landscape Contractor shall maintain the contract areas by accepted horticultural practices as well as rectifying any defects that become apparent in the works under normal use.
Mow the turf when it is established at regular intervals to maintain an average height of 50mm.

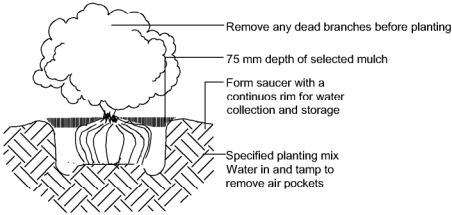
Detail 1.
Palm planting detail n.t.s



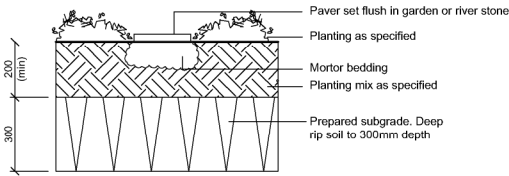
Detail 3.
Soil preparation detail n.t.s.



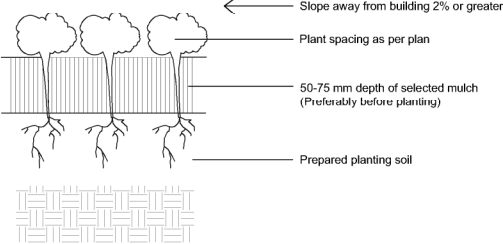
Detail 2.
Shrub planting detail n.t.s



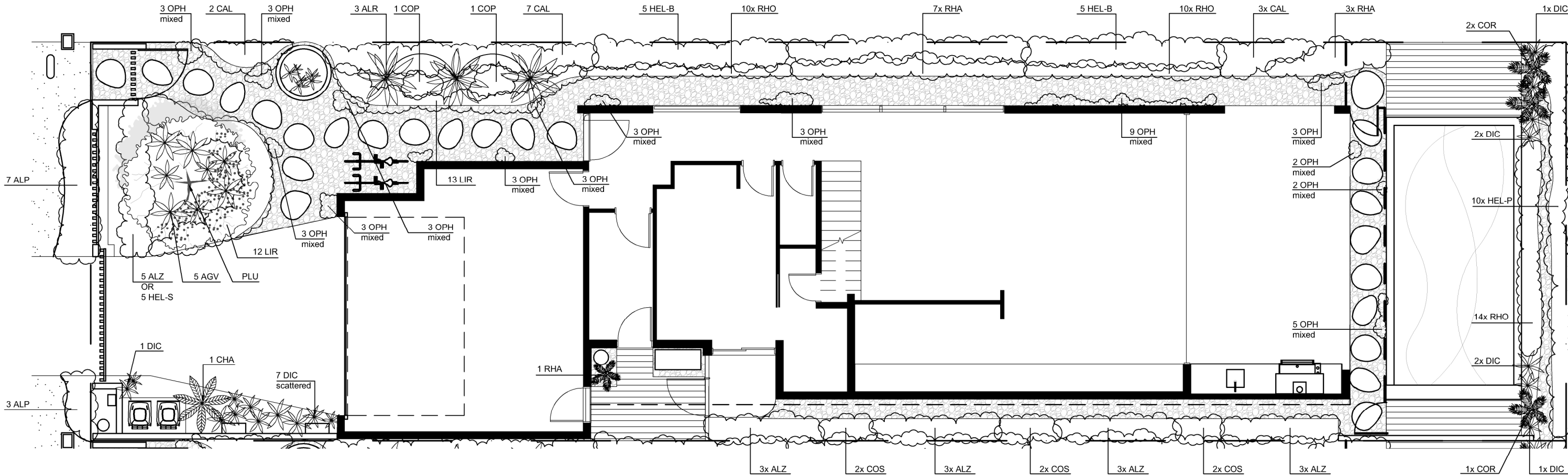
Detail 4.
Stepping stones in garden & river stones n.t.s



Detail 5.
Groundcover planting detail n.t.s



Landscape planting plan - ground floor (typical for all four villas) 1:50 @ A1



Planting schedule

Symbol	Botanical name	Common name	Cont. size	Mature height	Spacing	No req.
Trees/ Ferns / Palms / Accent Plants						
AGV	Agave attenuata	Century plant	200mm	0.5M	1000mm	5
ALR	Alacatanarea 'Rubra'	Giant Bromeliade	300mm	1.0M	As shown	3
ALP	Alpinia luteocarpa	'Red Rubin'	200mm	0.5-1M	500mm	10
ALZ	Alpinia zerumbet	Giant Pink OR Cream ginger	300mm	2-3M	1000mm	17
CAL	Calathea lutea	Cuban Cigar plant	300mm	2-3M	1000mm	18
CHA	Chamaedorea atrovirens	Cascade Palm	300mm	1.5-2M	As shown	1
COS	Costus stenophyllus	Cobra Costus	300mm	1.5-2M	800mm	6
COP	Costus productus	Spiral ginger	200mm	1M	800mm	2
COR	Cordyline 'Green Goddess'	Cordyline Green Goddess	200mm	2M	As shown	3
HEL-P	Heliconia orthotricha 'Pink Eden'	Heliconia Pink Eden	200mm	2-2.5M	1000mm	10
HEL-S	Heliconia chartacea 'Sexy Pink'	Sexy Pink	200mm	3-4M	1000mm	10
HEL-B	Heliconia bihai	Heliconia 'Hot Rio Nights'	200mm	2-3M	800mm	10
PLU	Plumeria acutifolia	Frangipani	45Lt	3-4.0M	As shown	1
RHA	Raphis excelsor	Lady Finger Palm	300mm	2-2.5M	As shown	11
Groundcovers						
OPH	Ophiopogon japonicus	Mixed sized mondo grass	100mm	0.2-0.8m	200mm	51
RHO	Rhoeo discolor	Moses in a Cradle	100mm	0.2M	400mm	34
Ornamental grasses/strappy leaved plants						
DIC	Dianella 'Little Jess'	Blue Flax Lily 'Little Jess'	100mm	0.4M	600mm	14
LIR	Liriope muscari	Lily turf	100mm	0.6M	800mm	25

Planting schedule species to be sourced from local nurseries supplying plants of local provenance wherever possible.
Numbers are exact. If unsure please contact Landscape Designer.
Container sizes may vary due to availability, in most cases please ensure a size that will work for this site.

