



IMPORTANT NOTES
THE BUILDER IS TO CHECK ALL DRAWINGS FOR DETAIL CONTENT AND DIMENSIONS PRIOR TO COMMENCEMENT OF ANY WORK.
DO NOT SCALE THESE DRAWINGS. SEEK CONFIRMATION FROM ARCHITECT IF DIMENSIONS ARE NOT CLEAR.
THESE DRAWINGS ARE TO BE READ IN STRICT ACCORDANCE WITH ALL OTHER CONSULTANTS DRAWINGS, COMPUTATIONS AND REPORTS.
ALL BUILDING WORKS ARE TO BE CARRIED OUT IN ACCORDANCE WITH THE CURRENT "BUILDING CODE OF AUSTRALIA" (BCA) AND ALL APPLICABLE AUSTRALIAN STANDARDS.
CONTRACTORS SHOP DRAWINGS ARE TO BE PROVIDED TO THE BUILDER AND CHECKED PRIOR TO COMMENCEMENT OF ANY FABRICATION. ALL WORKS ASSOCIATED WITH THE ASSEMBLY OR INSTALLATION OF THOSE WORKS IS TO BE IN ACCORDANCE WITH THE SHOP DRAWINGS DETAILS.
THESE NOTES ARE NEITHER EXHAUSTIVE NOR A SUBSTITUTE FOR REGULATIONS OR STATUTORY REQUIREMENTS AND ARE PROVIDED AS DIRECTION TO THE APPROPRIATE SOURCE OF RELEVANT AND IMPORTANT INFORMATION.

DEVELOPMENT APPLICATION

RevID	CHID	CHANGE DESCRIPTION	DATE
02			24/4/2024

HUNT
DESIGN

Architecture Master Planning Interiors

HUNT DESIGN
291 MOWBRAY RIVER ROAD, MOWBRAY
PO BOX 170, QLD 4877
T +61 7 4099 0500 F +61 7 4099 5534
www.hunt-design.com.au
ABN: 90514257527
© COPYRIGHT HUNT DESIGN

PROJECT GURNER01 - GURNER RESIDENCE 69-73 MURPHY STREET PORT DOUGLAS Lot 2 on RP724386		SCALE 1:2.23, 1:3.94	DRAWN JR; KS	CHECKED G.H.
CLIENT Gurner TM Nominees Pty Ltd		SHEET SIZE A1	DRAWING STATUS DEVELOPMENT APPLICATION	
CLIENT SIGN OFF		SIGNATURE	DATE	TITLE SET - FINISHES VISUALISATION
BUILDER SIGN OFF		SIGNATURE	DATE	PROJECT NO. GUR_PD1
PROJECT CODE PD1	ORIGINATOR HDA	VOLUME / SYSTEM	LEVEL / LOCATION / TYPE 00 DR A	STATUS DD
		DATE 24/4/2024	REVISION 02	



IMPORTANT NOTES

THE BUILDER IS TO CHECK ALL DRAWINGS FOR DETAIL CONTENT AND DIMENSIONS PRIOR TO COMMENCEMENT OF ANY WORK.

DO NOT SCALE THESE DRAWINGS. SEEK CONFIRMATION FROM ARCHITECT IF DIMENSIONS ARE NOT CLEAR.

THESE DRAWINGS ARE TO BE READ IN STRICT ACCORDANCE WITH ALL OTHER CONSULTANTS DRAWINGS, COMPUTATIONS AND REPORTS.

ALL BUILDING WORKS ARE TO BE CARRIED OUT IN ACCORDANCE WITH THE CURRENT "BUILDING CODE OF AUSTRALIA" (BCA) AND ALL APPLICABLE AUSTRALIAN STANDARDS.

CONTRACTORS SHOP DRAWINGS ARE TO BE PROVIDED TO THE BUILDER AND CHECKED PRIOR TO COMMENCEMENT OF ANY FABRICATION. ALL WORKS ASSOCIATED WITH THE ASSEMBLY OR INSTALLATION OF THOSE WORKS IS TO BE IN ACCORDANCE WITH THE SHOP DRAWINGS DETAILS.

THESE NOTES ARE NEITHER EXHAUSTIVE NOR A SUBSTITUTE FOR REGULATIONS OR STATUTORY REQUIREMENTS AND ARE PROVIDED AS DIRECTION TO THE APPROPRIATE SOURCE OF RELEVANT AND IMPORTANT INFORMATION.

DEVELOPMENT APPLICATION			
RevID	CHID	CHANGE DESCRIPTION	DATE
02			24/4/2024

HUNT

DESIGN

Architecture Master Planning Interiors

HUNT DESIGN

291 MOWBRAY RIVER ROAD, MOWBRAY

PO BOX 170, QLD 4877

T +61 7 4099 0500 F +61 7 4099 5534

www.hunttodesign.com.au

ABN: 90514257527

© COPYRIGHT HUNT DESIGN

PROJECT

GURNER01 - GURNER RESIDENCE

69-73 MURPHY STREET PORT DOUGLAS

Lot 2 on RP724386

CLIENT

Gurner TM Nominees Pty Ltd

CLIENT SIGN OFF

SIGNATURE

DATE

BUILDER SIGN OFF

SIGNATURE

DATE

PROJECT CODE

PD1

ORIGINATOR

HDA

VOLUME / SYSTEM

LEVEL / LOCATION

00

TYPE

DR

ROLE

A

DRAWING NO.

DA-17

STATUS

DD

REVISION

02

SCALE

DRAWN

JR; KS

CHECKED

G.H.

SHEET SIZE

A1

DRAWING STATUS

DEVELOPMENT APPLICATION

TITLE

SET -

RENDERS

PROJECT NO.

GUR_PD1

DATE

24/4/2024



IMPORTANT NOTES

THE BUILDER IS TO CHECK ALL DRAWINGS FOR DETAIL CONTENT AND DIMENSIONS PRIOR TO COMMENCEMENT OF ANY WORK.

DO NOT SCALE THESE DRAWINGS. SEEK CONFIRMATION FROM ARCHITECT IF DIMENSIONS ARE NOT CLEAR.

THESE DRAWINGS ARE TO BE READ IN STRICT ACCORDANCE WITH ALL OTHER CONSULTANTS DRAWINGS, COMPUTATIONS AND REPORTS.

ALL BUILDING WORKS ARE TO BE CARRIED OUT IN ACCORDANCE WITH THE CURRENT "BUILDING CODE OF AUSTRALIA" (BCA) AND ALL APPLICABLE AUSTRALIAN STANDARDS.

CONTRACTORS SHOP DRAWINGS ARE TO BE PROVIDED TO THE BUILDER AND CHECKED PRIOR TO COMMENCEMENT OF ANY FABRICATION. ALL WORKS ASSOCIATED WITH THE ASSEMBLY OR INSTALLATION OF THOSE WORKS IS TO BE IN ACCORDANCE WITH THE SHOP DRAWINGS DETAILS.

THESE NOTES ARE NEITHER EXHAUSTIVE NOR A SUBSTITUTE FOR REGULATIONS OR STATUTORY REQUIREMENTS AND ARE PROVIDED AS DIRECTION TO THE APPROPRIATE SOURCE OF RELEVANT AND IMPORTANT INFORMATION.

DEVELOPMENT APPLICATION

RevID	CHID	CHANGE DESCRIPTION	DATE
02			24/4/2024



Architecture Master Planning Interiors

HUNT DESIGN
291 MOWBRAY RIVER ROAD, MOWBRAY
PO BOX 170, QLD 4877
T +61 7 4099 0500 F +61 7 4099 5534
www.huntdesign.com.au
ABN: 90514257527

© COPYRIGHT HUNT DESIGN

PROJECT		SCALE		DRAWN	CHECKED
GURNER01 - GURNER RESIDENCE 69-73 MURPHY STREET PORT DOUGLAS Lot 2 on RP724386		A1		JR; KS	G.H.
CLIENT		DRAWING STATUS		DEVELOPMENT APPLICATION	
Gurner TM Nominees Pty Ltd		TITLE		SET -	
CLIENT SIGN OFF		SIGNATURE		DATE	
BUILDER SIGN OFF		SIGNATURE		DATE	
PROJECT CODE		ORIGINATOR		VOLUME / SYSTEM	LEVEL / LOCATION / TYPE
PD1		HDA			
		00	DR	A	DA-18
		DD	02		



IMPORTANT NOTES

THE BUILDER IS TO CHECK ALL DRAWINGS FOR DETAIL CONTENT AND DIMENSIONS PRIOR TO COMMENCEMENT OF ANY WORK.

DO NOT SCALE THESE DRAWINGS. SEEK CONFIRMATION FROM ARCHITECT IF DIMENSIONS ARE NOT CLEAR.

THESE DRAWINGS ARE TO BE READ IN STRICT ACCORDANCE WITH ALL OTHER CONSULTANTS DRAWINGS, COMPUTATIONS AND REPORTS.

ALL BUILDING WORKS ARE TO BE CARRIED OUT IN ACCORDANCE WITH THE CURRENT "BUILDING CODE OF AUSTRALIA" (BCA) AND ALL APPLICABLE AUSTRALIAN STANDARDS.

CONTRACTORS SHOP DRAWINGS ARE TO BE PROVIDED TO THE BUILDER AND CHECKED PRIOR TO COMMENCEMENT OF ANY FABRICATION. ALL WORKS ASSOCIATED WITH THE ASSEMBLY OR INSTALLATION OF THOSE WORKS IS TO BE IN ACCORDANCE WITH THE SHOP DRAWINGS DETAILS.

THESE NOTES ARE NEITHER EXHAUSTIVE, NOR A SUBSTITUTE FOR REGULATIONS OR STATUTORY REQUIREMENTS AND ARE PROVIDED AS DIRECTION TO THE APPROPRIATE SOURCE OF RELEVANT AND IMPORTANT INFORMATION.

DEVELOPMENT APPLICATION

RevID	CHID	CHANGE DESCRIPTION	DATE
02			24/4/2024



Architecture Master Planning Interiors

HUNT DESIGN
291 MOWBRAY RIVER ROAD, MOWBRAY
PO BOX 170, QLD 4877
T +61 7 4099 0500 F +61 7 4099 5534
www.huntdesign.com.au
ABN: 90514257527
© COPYRIGHT HUNT DESIGN

PROJECT		SCALE	DRAWN	CHECKED
GURNER01 - GURNER RESIDENCE 69-73 MURPHY STREET PORT DOUGLAS Lot 2 on RP724386		A1	JR; KS	G.H.
CLIENT		DRAWING STATUS		
Gurner TM Nominees Pty Ltd		DEVELOPMENT APPLICATION		
CLIENT SIGN OFF		SIGNATURE		DATE
BUILDER SIGN OFF		SIGNATURE		DATE
PROJECT CODE		VOLUME / SYSTEM	LEVEL / LOCATION	TYPE
PD1		HDA	00	DR A
TITLE		DRAWING NO.	STATUS	REVISION
SET - STREET PERSPECTIVE		DA-19	DD	02
PROJECT NO.		DATE		
GUR_PD1		24/4/2024		

Annexure 4: Revised Landscape Plans



69 - 73 MURPHY STREET

PORT DOUGLAS

DRAWING SCHEDULE

511_DA_01	COVER PAGE
511_DA_02	PLANTING SCHEDULE
511_DA_03	PLANTING PALETTE
511_DA_04	TREE RETENTION & REMOVAL PLAN
511_DA_10	LANDSCAPE PLAN - ENTRY ROAD & WESTERN BOUNDARY
511_DA_11	LANDSCAPE PLAN - GROUND LEVEL 1/2
511_DA_12	LANDSCAPE PLAN - GROUND LEVEL 2/2
511_DA_14	LANDSCAPE PLAN - LEVEL 2
511_DA_15	LANDSCAPE PLAN - LEVEL 3
511_DA_35	TYPICAL DETAILS
511_DA_36	BIN SHELTER DETAILS
511_DA_50	GENERAL SPECIFICATION

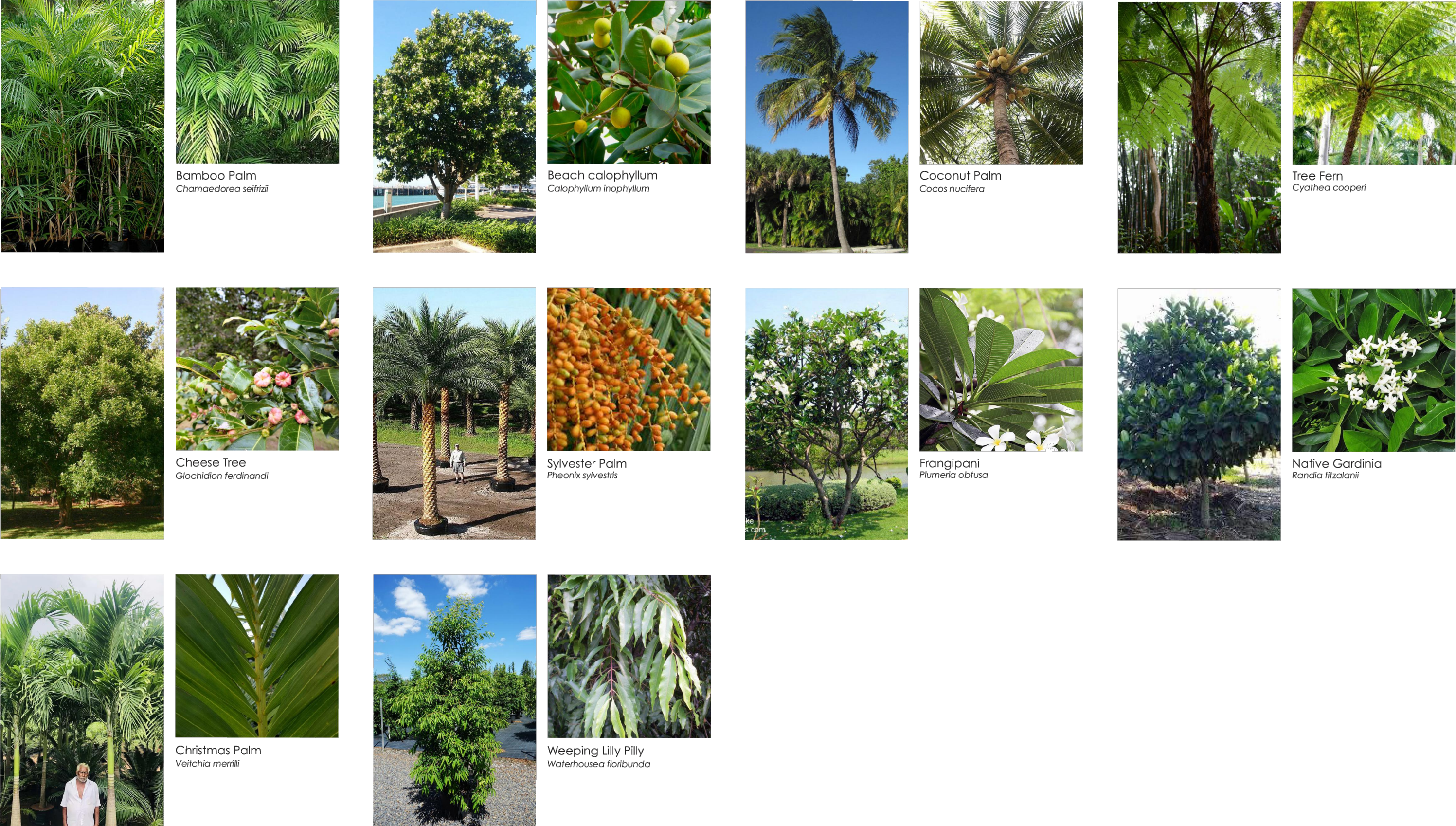
GENERAL NOTES

- ALL LANDSCAPE DRAWINGS ARE TO BE READ IN CONJUNCTION WITH THE ARCHITECT'S AND ADDITIONAL CONSULTANT'S DRAWINGS, SPECIFICATIONS AND REPORTS
- ALL PUBLIC UTILITY SERVICES ARE TO BE LOCATED ON SITE BY THE CONTRACTOR PRIOR TO THE COMMENCEMENT OF WORKS. THE LOCATION, PRESENCE AND EXTENT OF SERVICES SHOWN ARE NOT GUARANTEED COMPLETE OR CORRECT
- PERFORM EXCAVATION IN THE VICINITY OF UNDERGROUND UTILITIES WITH CARE AND IF NECESSARY, BY HAND. THE CONTRACTOR BEARS FULL RESPONSIBILITY FOR THIS WORK AND DISRUPTION OR DAMAGE TO UTILITIES SHALL BE REPAIRED IMMEDIATELY AT NO EXPENSE TO THE OWNER
- NO TREES PROTECTED UNDER THE LOCAL COUNCIL'S TREE PRESERVATION ORDER ARE TO BE REMOVED UNLESS APPROVED BY DEVELOPMENT CONSENT OR PERMIT OBTAINED FROM COUNCIL
- ALL PAVING IS INDICATIVE, TO BE TO FUTURE SPECIFICATION, AND SET OUT ON SITE
- ALL WORK TO BE CARRIED OUT IN ACCORDANCE WITH THE LOCAL COUNCIL'S APPROVAL, STANDARDS AND CODES
- THE CONTRACTOR IS TO ENSURE THAT ALL THE WORKS ARE CARRIED OUT IN ACCORDANCE WITH THE WORK HEALTH AND SAFETY ACT
- MBD TO REVIEW PLANT MATERIALS AT SOURCE OR BY PHOTOGRAPHS PRIOR TO PURCHASE AND DELIVERY
- EXACT LOCATIONS OF NEW PLANT MATERIAL TO BE SETOUT AND APPROVED BY THE MBD ONSITE PRIOR TO INSTALLATION. MBD RESERVES THE RIGHT TO ADJUST PLANTS TO EXACT LOCATION ONSITE

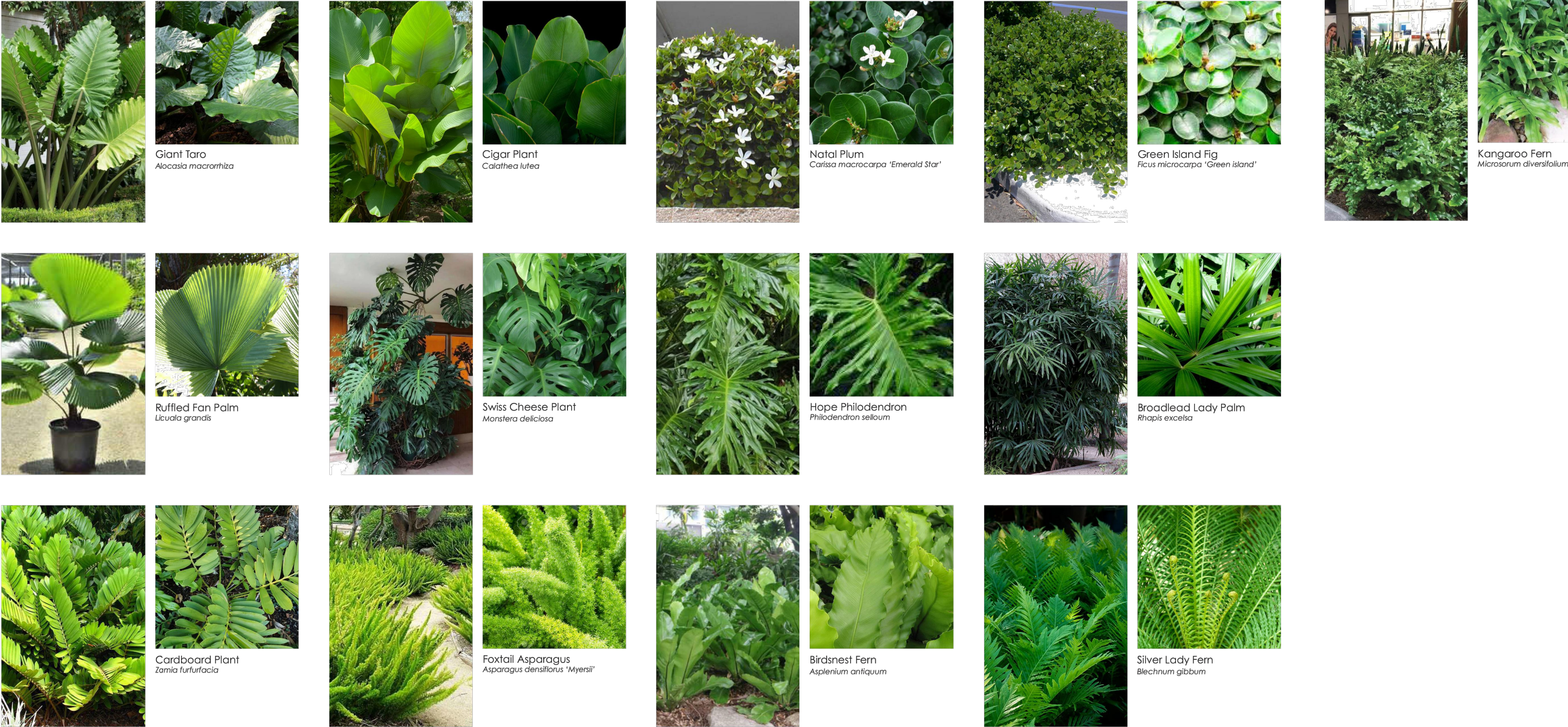
DRAINAGE AND IRRIGATION NOTES

- REFER TO CIVIL ENGINEER'S UTILITY AND DRAINAGE PLANS FOR UTILITY LOCATION AND DRAINAGE INFORMATION.
- REQUIREMENTS FOR LANDSCAPE DRAINAGE TO BE CONFIRMED ONSITE UNLESS OTHERWISE SHOWN ON THE LANDSCAPE PLANS
- TREE PITS THAT HAVE BEEN EXCAVATED INTO HEAVY EARTH OR STONE TO CONTAIN A RING OF AG PIPE LAID AT THE INVERT OF THE PIT WITHIN A MINIMUM 200mm LAYER OF FREE DRAINING MATERIAL. AG PIPE TO BE CONNECTED TO A DRAINAGE OUTLET (REFER TO TYPICAL TREE PIT DRAINAGE SECTION)
- ALL POTS TO HAVE AN IRRIGATION ALLOWANCE (SHRUBLERS OR DRIP)
- FOR POTS LOCATED ON PAVED SURFACES, TYPICAL PAVING IRRIGATION DETAIL TO BE USED AS SHOWN
- POTS ADJACENT TO GARDEN BEDS TO BE IRRIGATED VIA IN GARDEN IRRIGATION SYSTEM
- ALL LAWN AREAS TO HAVE POPUP ROTORS
- ALL GARDEN BEDS TO HAVE FIXED SOLID RISERS WITH SPRAYS

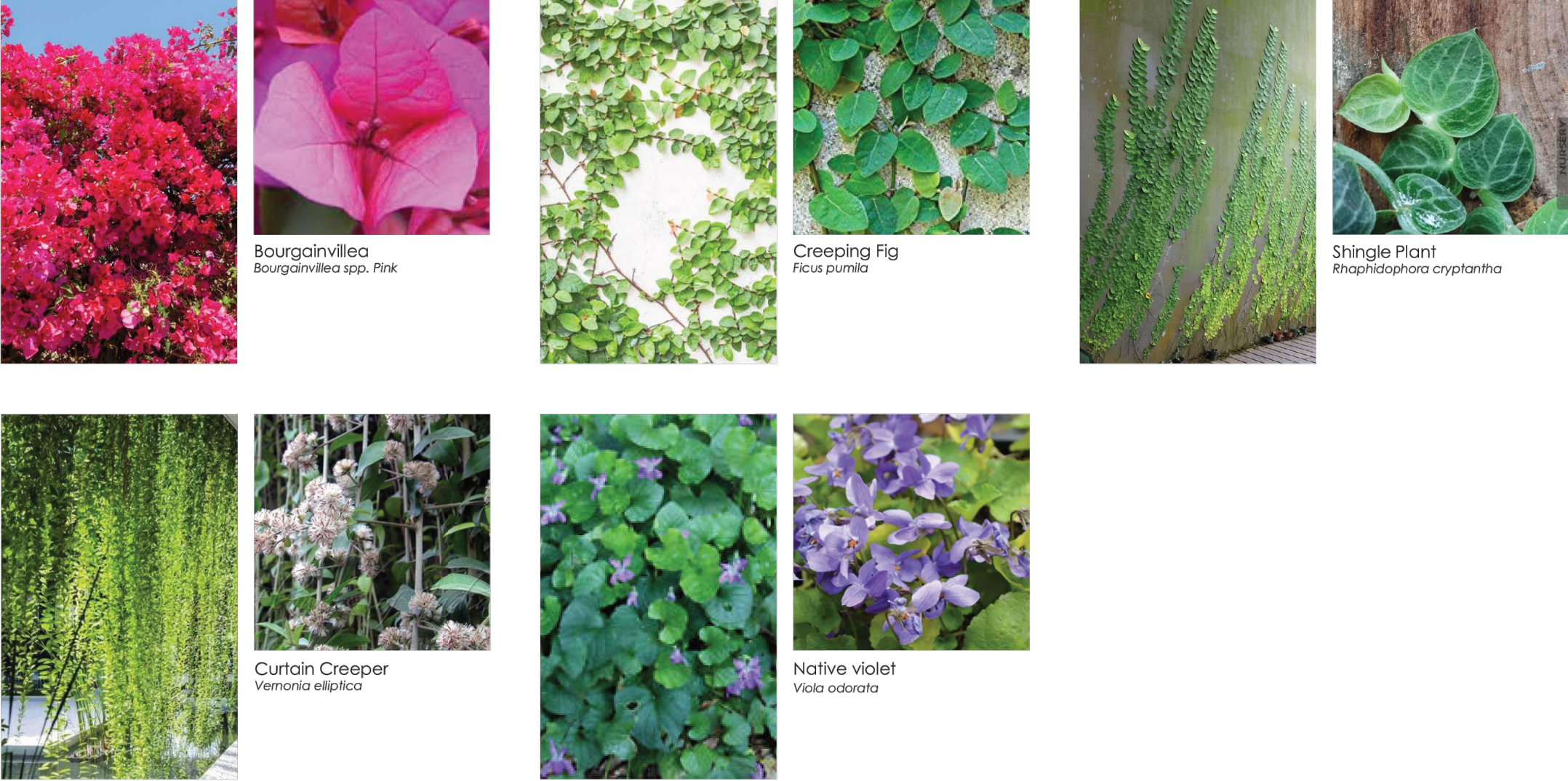
TREES



SHRUBS, PERENNIALS & FERNS



CLIMBERS, HANGING PLANTS & GROUNDCOVERS



PLANT SCHEDULE

TREES										
CODE	BOTANIC NAME	COMMON NAME	ZONE 1	ZONE 2	ZONE 3	ZONE 4	TOTAL	POT SIZE	MATURE HEIGHT	NOTES
AA	Archontophoenix alexandrae	Alexandra Palm	5				5	200L	8m	
CA	Cupaniopsis anacardioides	Tuckeroo	3				3	200L	10m	
CS	Chamaedorea seifrizii	Bamboo Palm	22	11	5		38	Mature	3m	
CJ	Calophyllum inophyllum	Beach Calophyllum	8	6			14	Mature	10m	
CN	Cocos nucifera	Coconut Palm	30	15	5		50	Mature	6-10m	
CC	Cyathea cooperi	Tree Fern		3			3	200L	5m	
GF	Glochidion ferdinandi	Cheese Tree	4				4	Mature	8m	
NF	Nypa fruticans	Nipa Palm	9				9	200L	6m	
PS	Pheonix sylvestris	Sylvester Palm			6		6	Mature	10m	
PO	Plumeria obtusa	Frangipani	3	1	8		12	300L	6m	
RF	Randia fitzalanii	Native Gardenia	5	3			8	300L	3m	
VM	Veitchia merrilli	Christmas Palm	17	7	5		29	200L	6-8m	
WF	Waterhousea floribunda	Weeping Lilly Pilly	4				4	200L	3-5m	
SHRUBS & PERENNIALS										
CODE	BOTANIC NAME	COMMON NAME	ZONE 1	ZONE 2	ZONE 3	ZONE 4	TOTAL	POT SIZE	MATURE HEIGHT	NOTES
Ab	Alocasia brisbanensis	Native Cunjevoi Lily	X					200mm	1m	
Ac	Alpinia caerulea	Native Ginger	X					200mm	2m	
Am	Alocasia macrorrhiza	Giant Taro			X			400mm	1.5-2.5m	
CI	Calathea lutea	Cigar Plant	X	X				200mm	2-3m	
Cm	Carissa macrocarpa 'Emerald star'	Natal Plum						300mm	0.6m	
Fm	Ficus microcarpa 'Green Island'	Greenisland Fig	X	X				300mm	0.6m	
Lg	Licuala grandis	Ruffled Fan Palm						300mm	3m	
Md	Monstera deliciosa	Swiss Cheese Plant						400mm	3m	
PS	Philodendron selloum	Hope Philodendron	X	X	X	X		300mm	2m	
Re	Rhapis excelsa	Broadleaf lady palm	X	X				300mm	4m	
Sa	Syzygium australe	Brush Cherry	X					200mm	5m	
Zf	Zamia furfuracea	Cardboard Plant				X		200mm	1m	
FERNS										
CODE	BOTANIC NAME	COMMON NAME	ZONE 1	ZONE 2	ZONE 3	ZONE 4	TOTAL	POT SIZE	MATURE HEIGHT	NOTES
Am	Asparagus densiflorus 'Myersii'	Foxtail Asparagus						200mm	0.7m	
Aa	Asplenium antiquum	Birdsnest Fern			X			200mm	1m	
Aau	Asplenium australasicum	Bird's Nest Fern	X					200mm	1m	
Bn	Blechnum gibbum	Silver Lady Fern			X			200mm	1m	
Md	Microsorium diversifolium	Kangaroo Fern	X	X	X			100mm	0.4m	
GROUNDCOVERS & CLIMBERS										
CODE	BOTANIC NAME	COMMON NAME	ZONE 1	ZONE 2	ZONE 3	ZONE 4	TOTAL	POT SIZE	MATURE HEIGHT	NOTES
Cp	Calliopsis prolifera		X					140mm	Groundcover	
B	Bougainvillea sp. 'Pink'	Bougainvillea				X		200mm	Climber	
Hb	Hibbertia banksii		X					140mm	Groundcover	
Fp	Ficus pumila	Creeping fig			X			140mm	Climber	
Pp	Pandorea pandorana	Wonga Vine	X					140mm	Climber	
Rc	Rhaphidophora cryptantha	Shingle Plant			X			100mm	Climber	
Vo	Viola odorata	Native violet			X			100mm	Groundcover	
Ve	Veronica elliptica	Curtain creeper						100mm	Cascading Groundcover	

NOTES

- IF SPECIFIED POT SIZES ARE NOT READILY AVAILABLE, PLEASE CONTACT MBD TO CLARIFY SUBSTITUTE SIZES AND CHANGES TO QUANTITIES
- ALL MATURE TREES TO BE SOURCED AND SUPPLIED BY MYLES BALDWIN DESIGN
- THE PLANT SCHEDULE IS CALCULATED BASED OFF THE LANDSCAPE PLANS PROVIDED BY MBD. ADDITIONAL PLANTS OUTSIDE OF THIS SCHEDULE MAY BE REQUIRED TO REACH THE DESIRED PLANT DENSITIES ONSITE
- ALL PLANT MATERIAL TO BE SETOUT ONSITE BY MYLES BALDWIN DESIGN PRIOR TO INSTALLATION

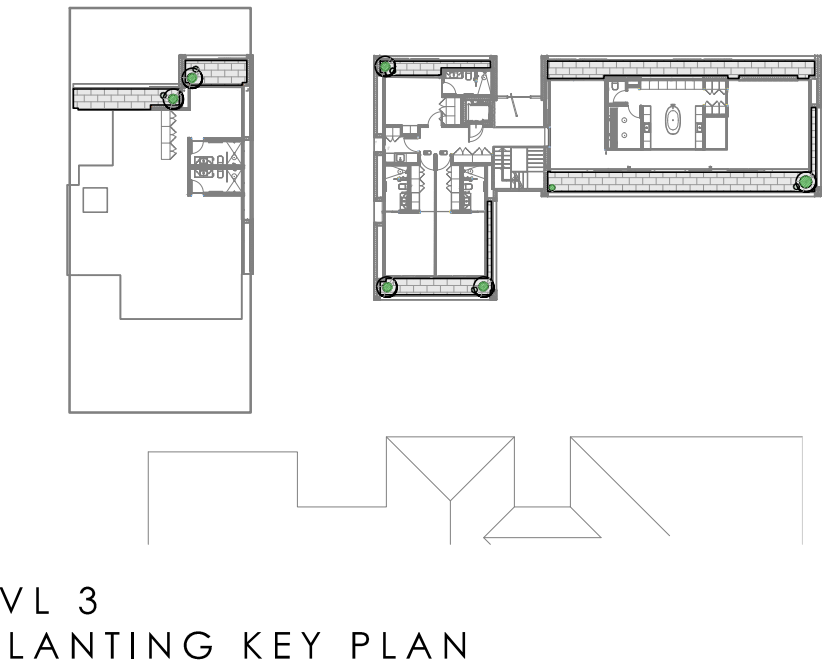
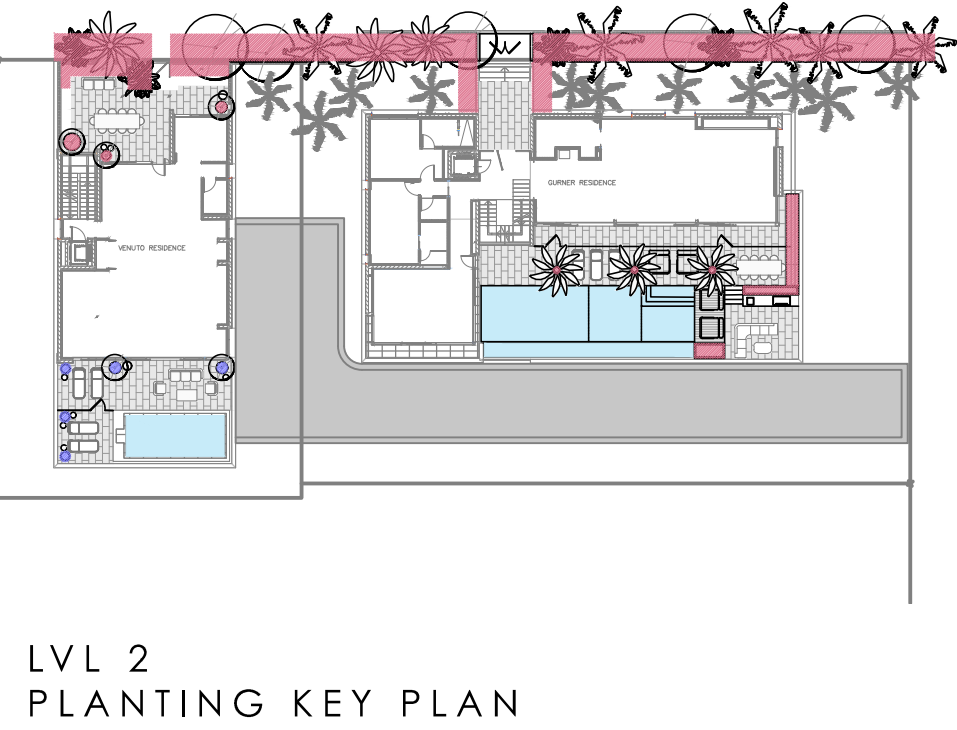
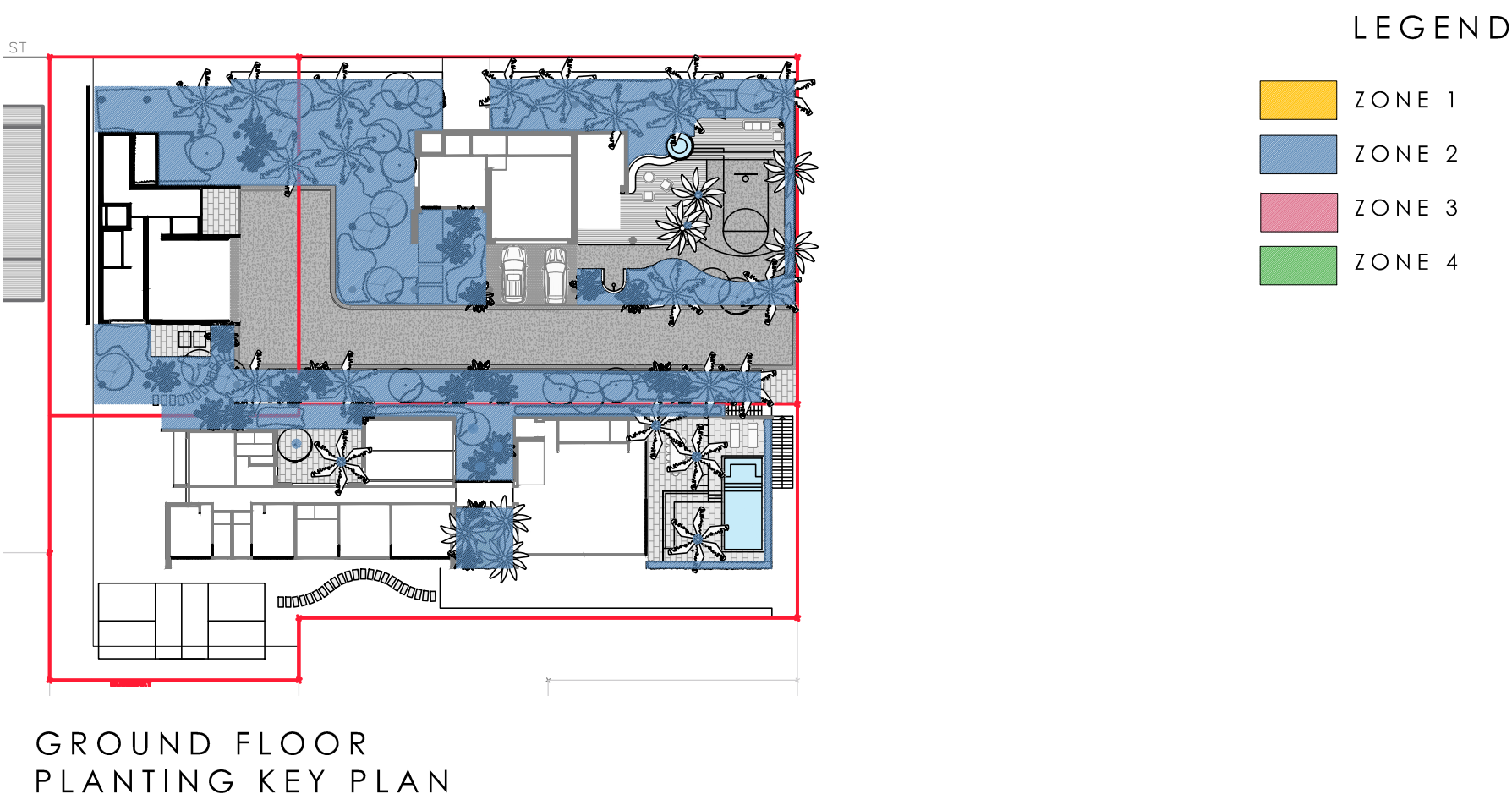
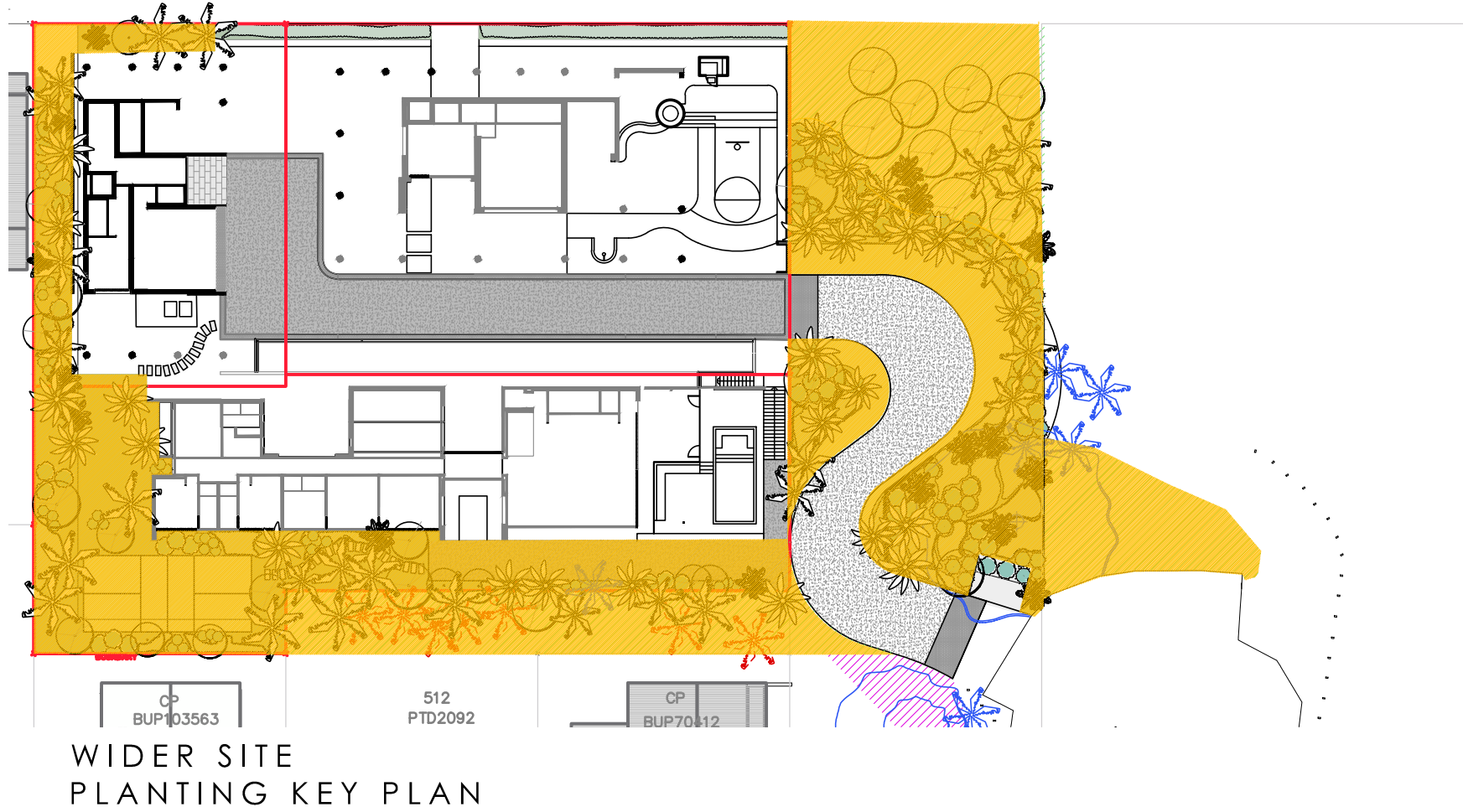
SPECIES TO DOUGLAS SHIRE COUNCIL PLANNING SCHEME POLICY SC6.7 LANDSCAPE

EXISTING TREE SCHEDULE

EXISTING TREES TO BE RETAINED				
CODE	BOTANIC NAME	COMMON NAME	HEIGHT	SPREAD
T1	Cocos nucifera	Coconut Palm	15m	5m
T2	Cocos nucifera	Coconut Palm	11m	5m
T3	Cocos nucifera	Coconut Palm	12m	5m
T4	Schefflera actinophylla	Umbrella Tree	10m	10m
T5	Calophyllum inophyllum	Beauty Leaf	9m	11m
T6	Calophyllum inophyllum	Beauty Leaf	9m	5m
T7	Calophyllum inophyllum	Beauty Leaf	18m	18m
T8	Calophyllum inophyllum	Beauty Leaf	17m	10m
T9	Cocos nucifera	Coconut Palm	15m	5m
T10	Cocos nucifera	Coconut Palm	15m	5m
T11	Cocos nucifera	Coconut Palm	14m	5m
T12	Cocos nucifera	Coconut Palm	14m	5m
T13	Cocos nucifera	Coconut Palm	14m	5m

NOTES

- REFER TO ARBORIST IMPACT ASSESSMENT PREPARED BY ADVANCED VEGETATION MANAGEMENT 02/08/2023



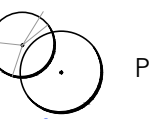


REFER TO THE PLANT SCHEDULE ON
DRAWING 02 FOR **ZONE 4** PLANTING

FEATURE POTS ON BALCONY
TO FUTURE SPECIFICATION
BALUSTRADE TO ARCHITECTS
DETAILS AND SPECIFICATION
PAVING TO ARCHITECTS
SPECIFICATION

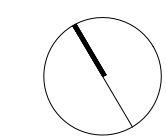
REFER TO THE PLANT SCHEDULE ON
DRAWING 02 FOR **ZONE 4** PLANTING

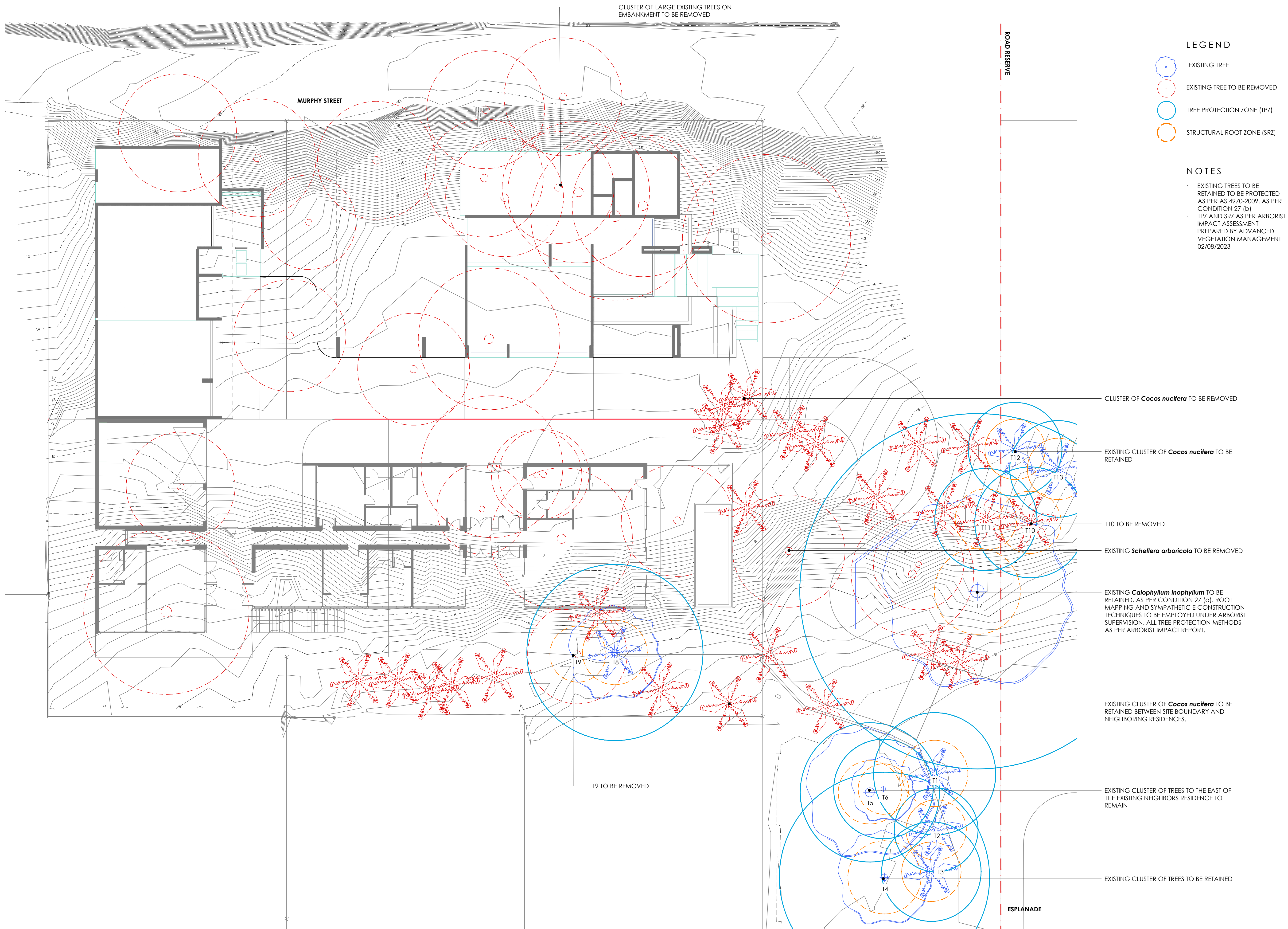
PAVING TO ARCHITECTS SPECIFICATION
BALUSTRADE TO ARCHITECTS
DETAILS AND SPECIFICATION
FEATURE POTS ON BALCONY TO FUTURE SPECIFICATION

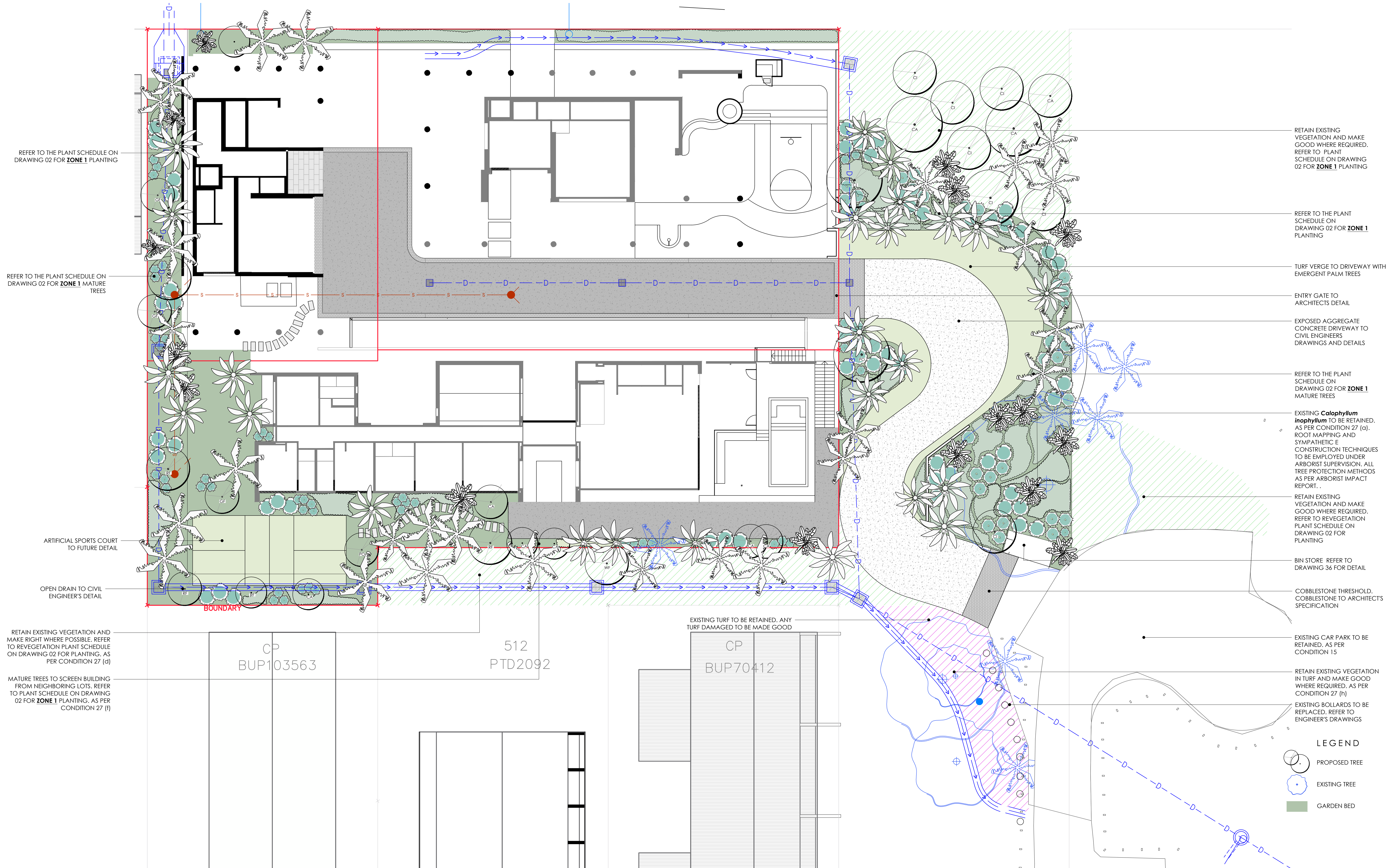
LEGEND

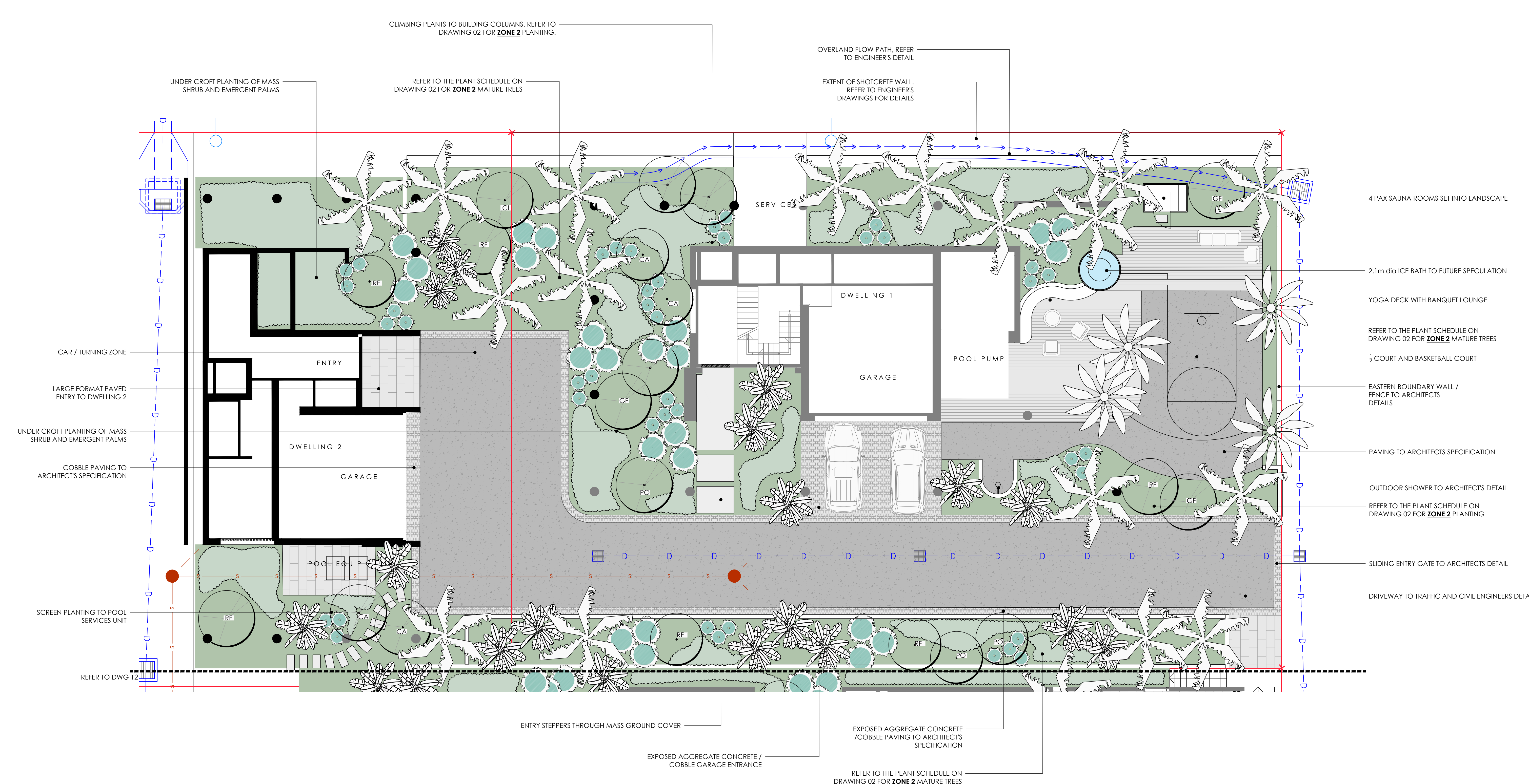
-  PROPOSED TREE
-  EXISTING TREE
-  GARDEN BED

SCALE 1:100
0 1 2 3 4 5 10

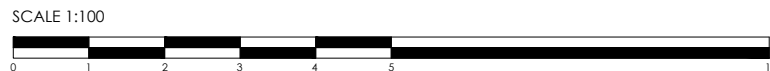




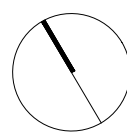


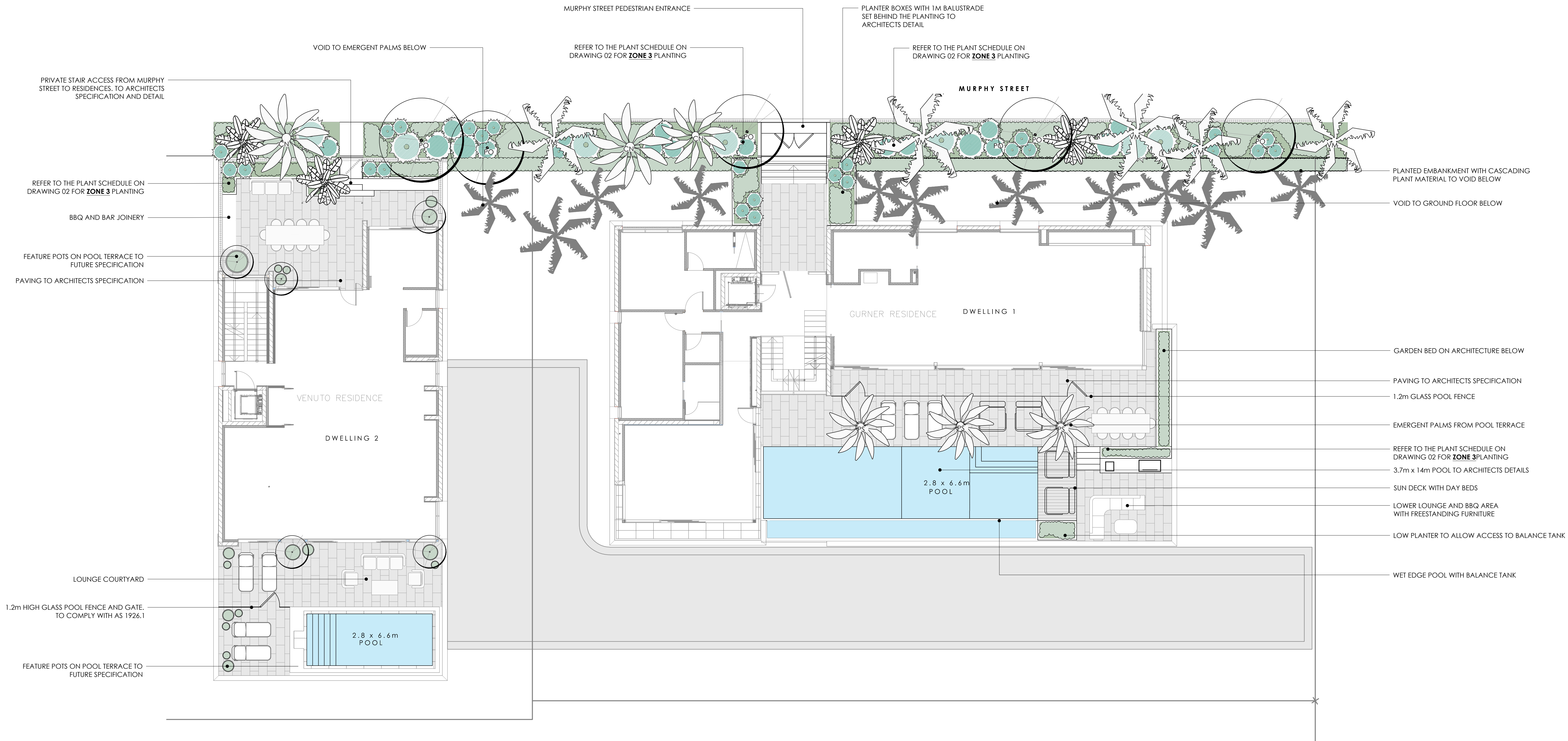


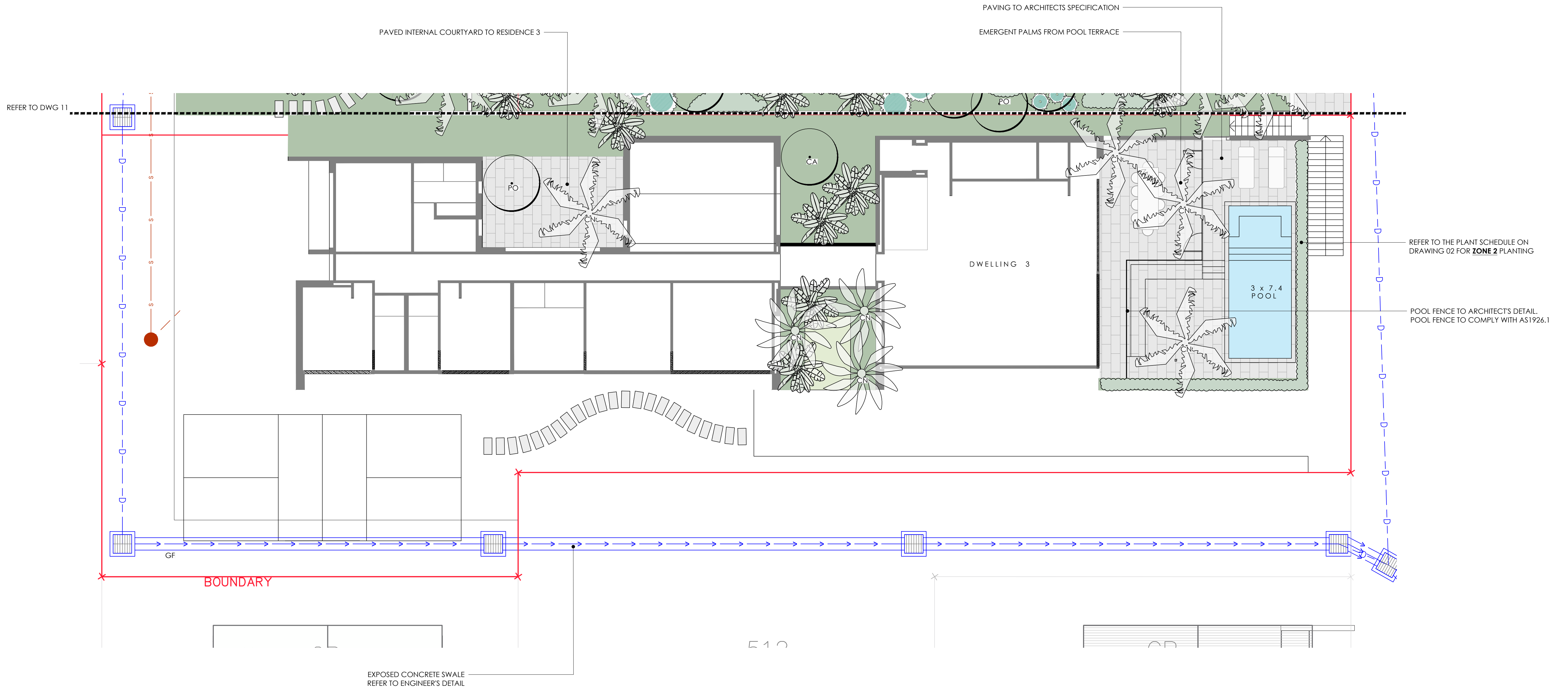
- LEGEND
- PROPOSED TREE
 - EXISTING TREE
 - GARDEN BED



ISSUE	DATE	DETAILS
A	16.03.22	ISSUE FOR DA
B	16.07.22	UPDATED ISSUE FOR DA
C	07.05.24	ISSUE FOR DA



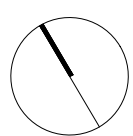


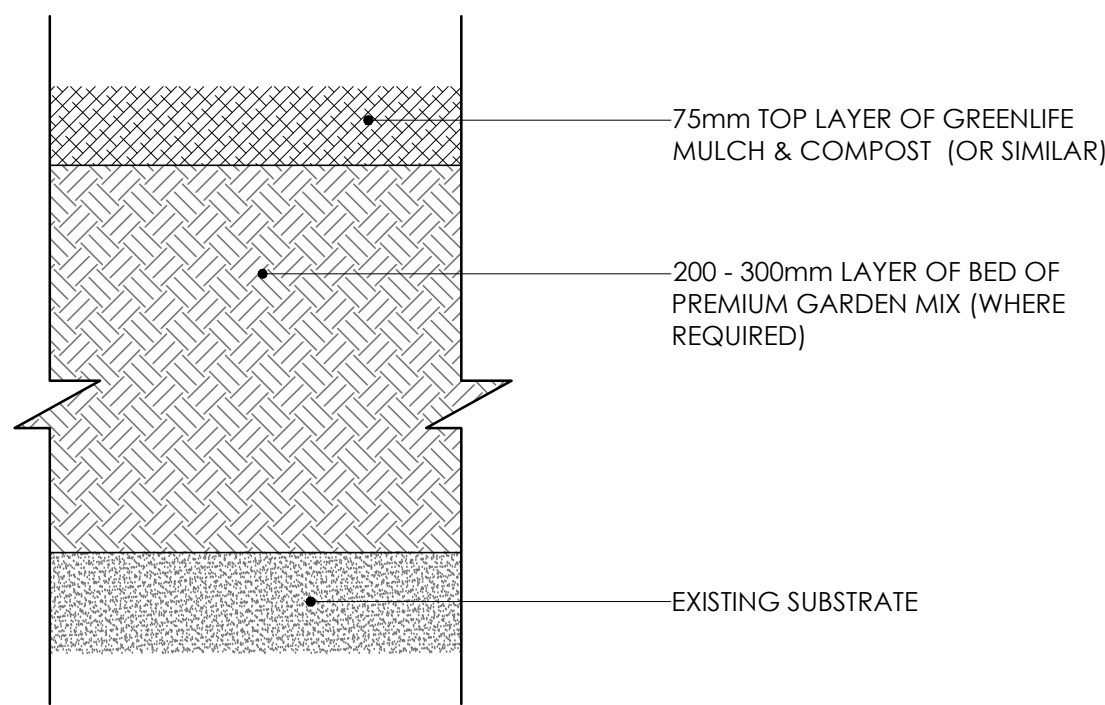


LEGEND

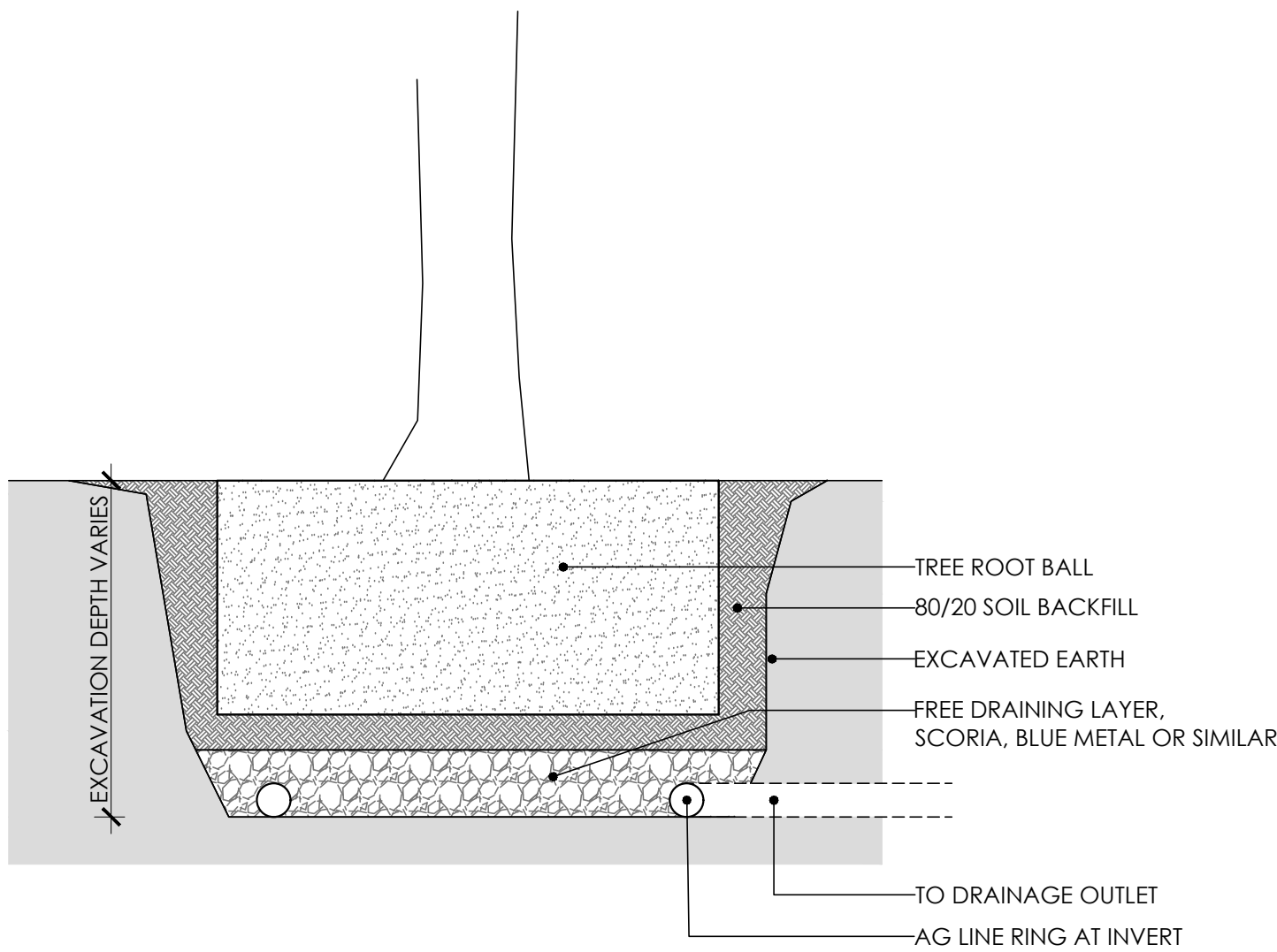
- PROPOSED TREE
- EXISTING TREE
- GARDEN BED

SCALE 1:100

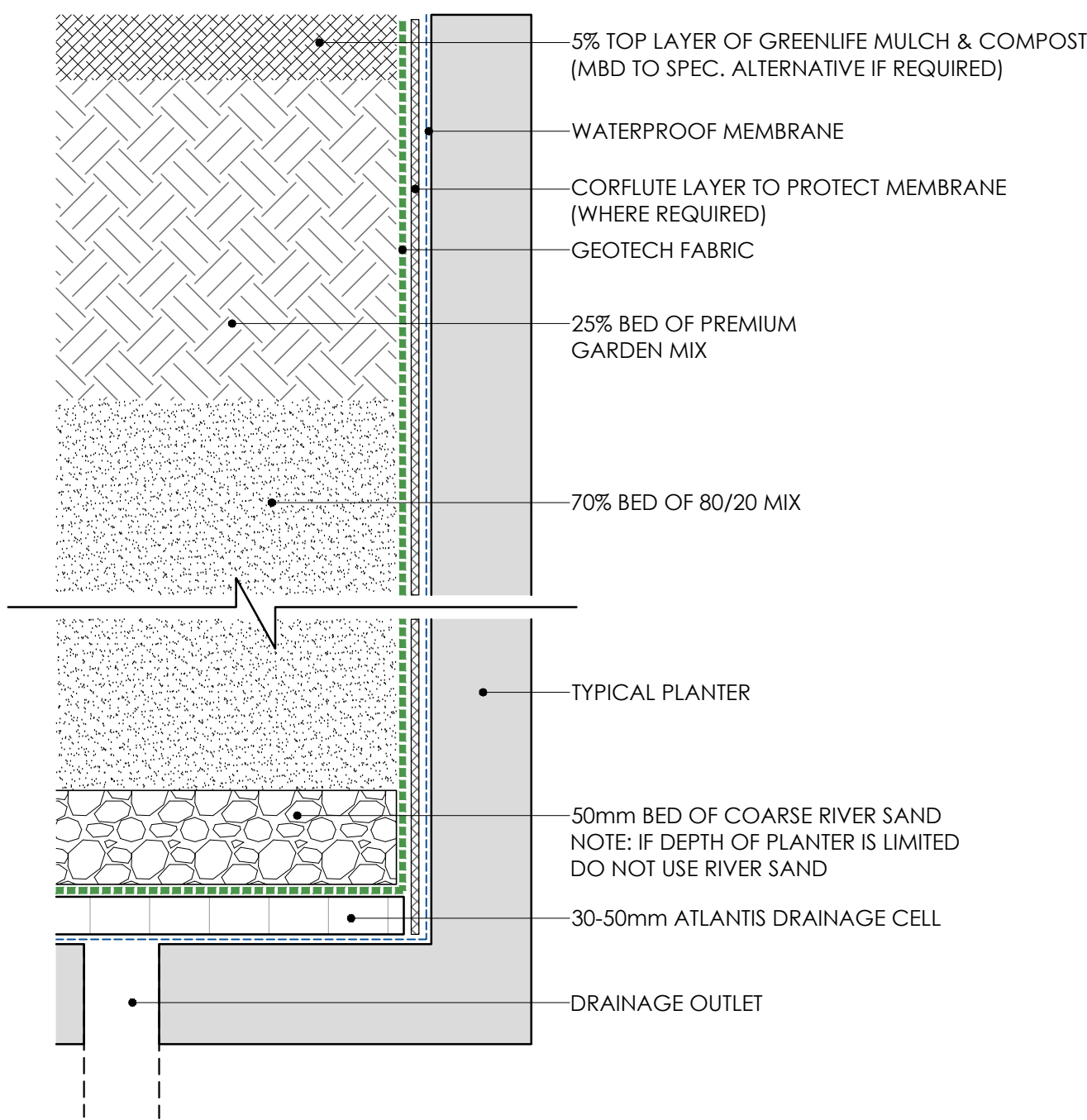




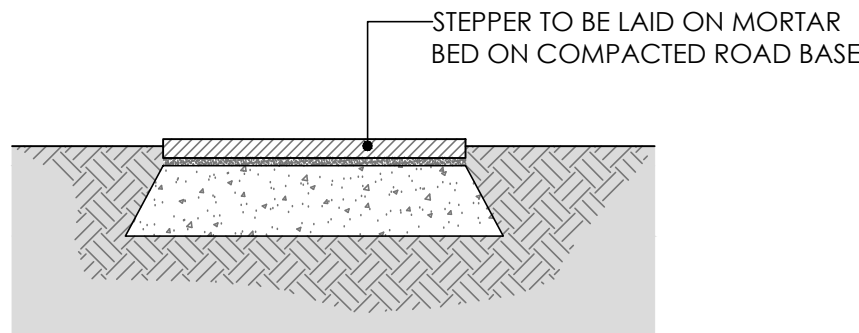
TYPICAL GARDEN SOIL PROFILE
SCALE: 1:5 @ A1



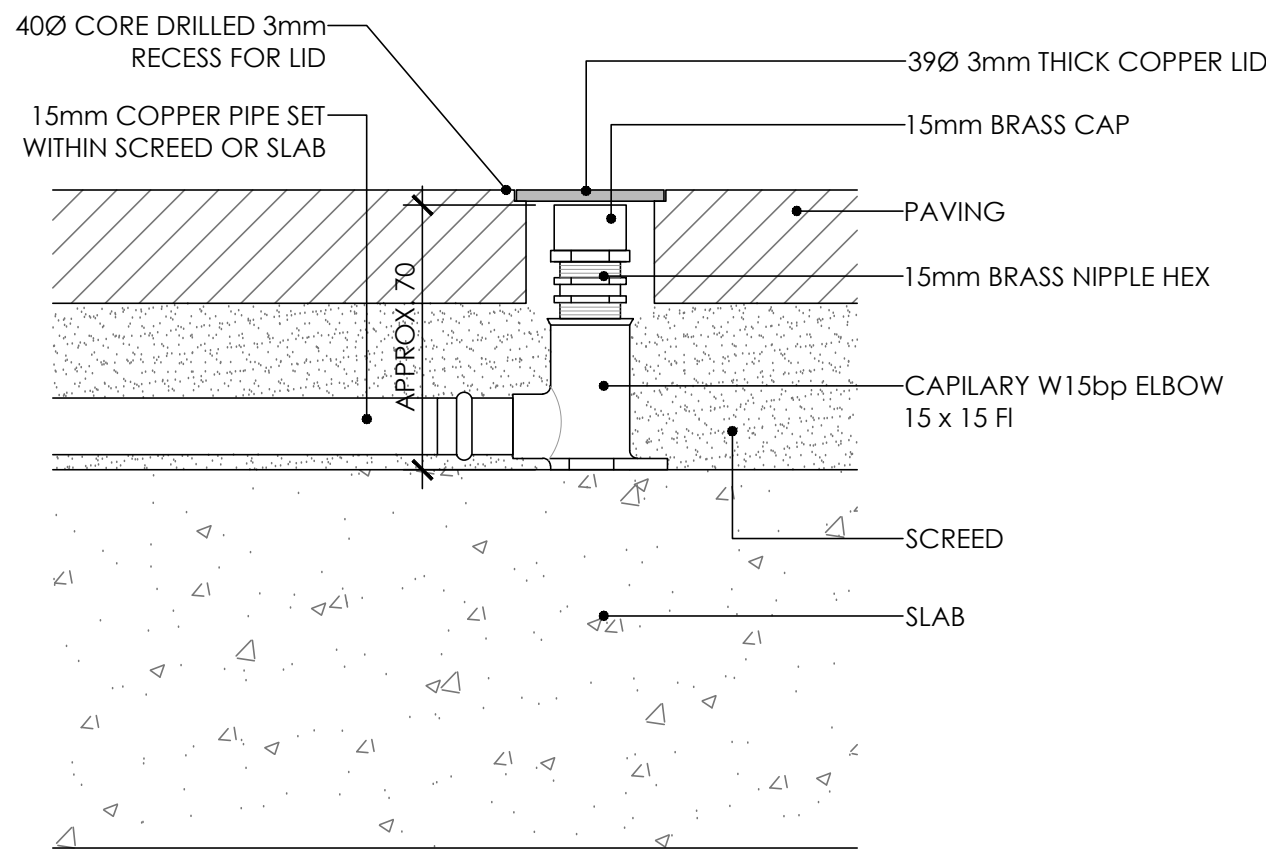
TYPICAL TREE PIT DRAINAGE
SCALE 1:20 @ A1



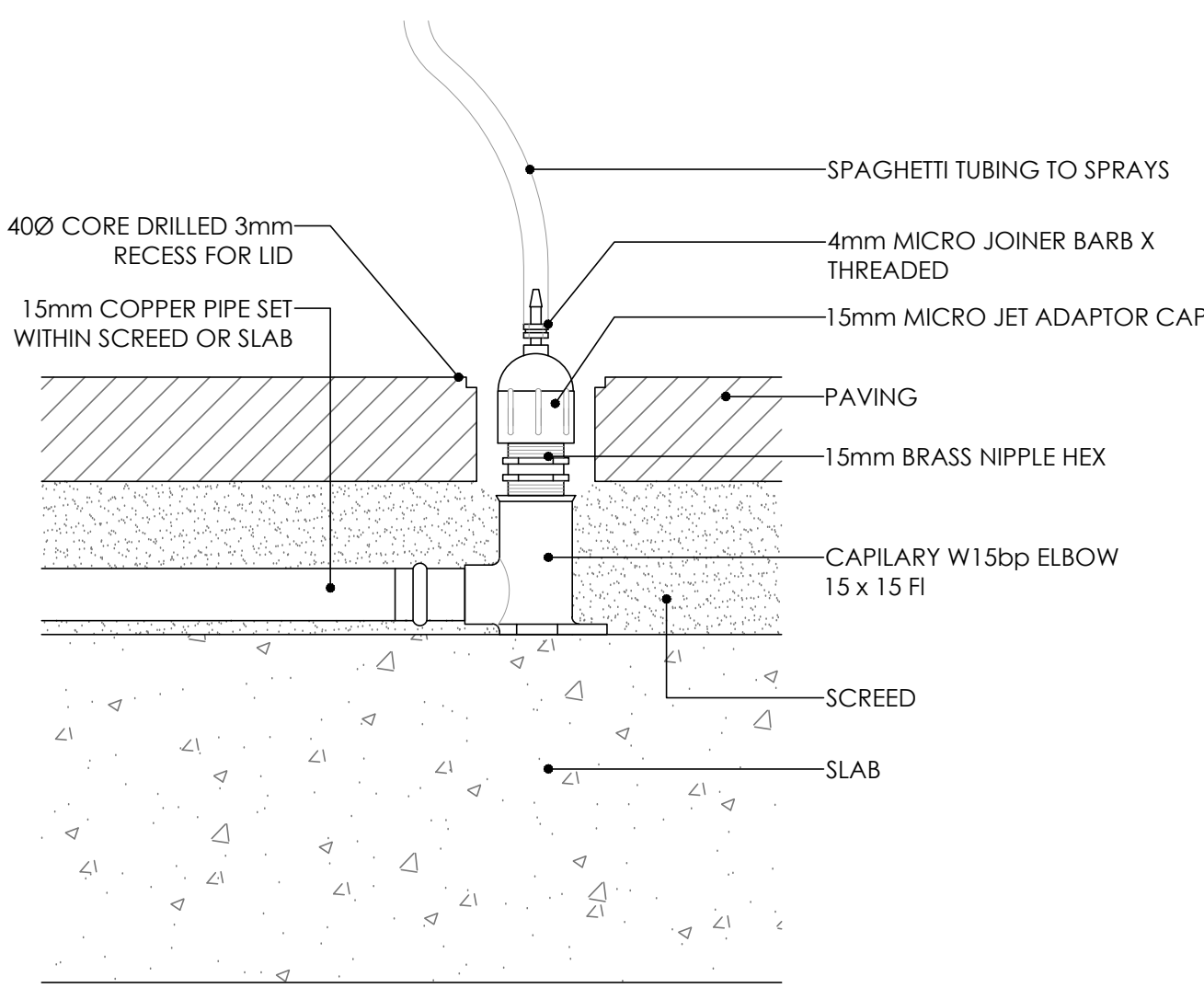
TYPICAL PLANTER SOIL PROFILE
SCALE: 1:5 @ A1



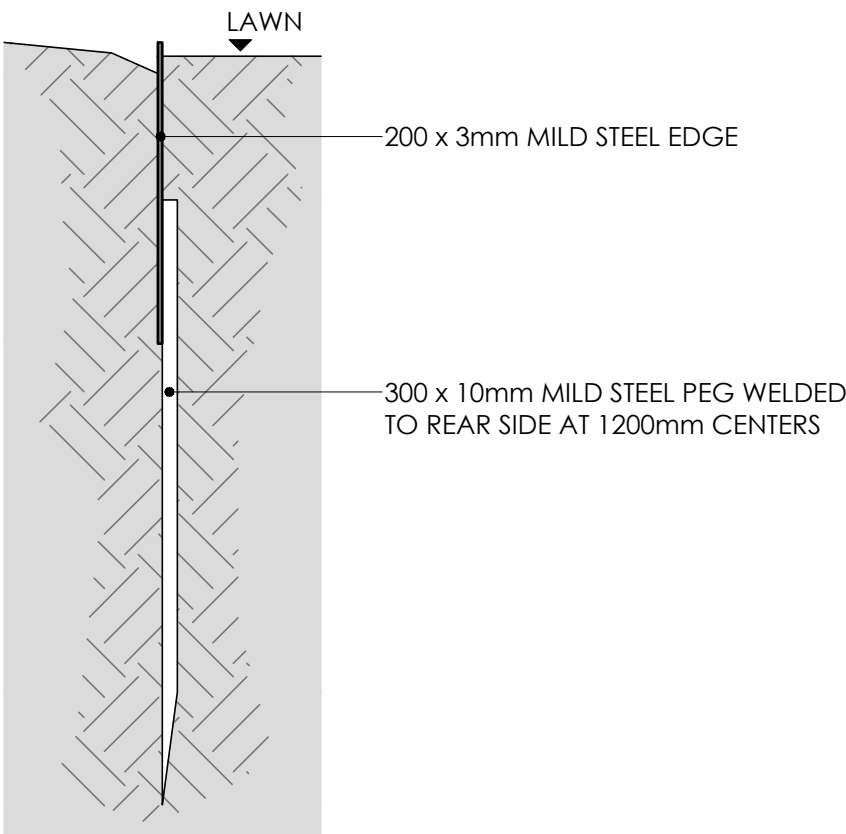
TYPICAL GARDEN STEPPER
SCALE: 1:10 @ A1



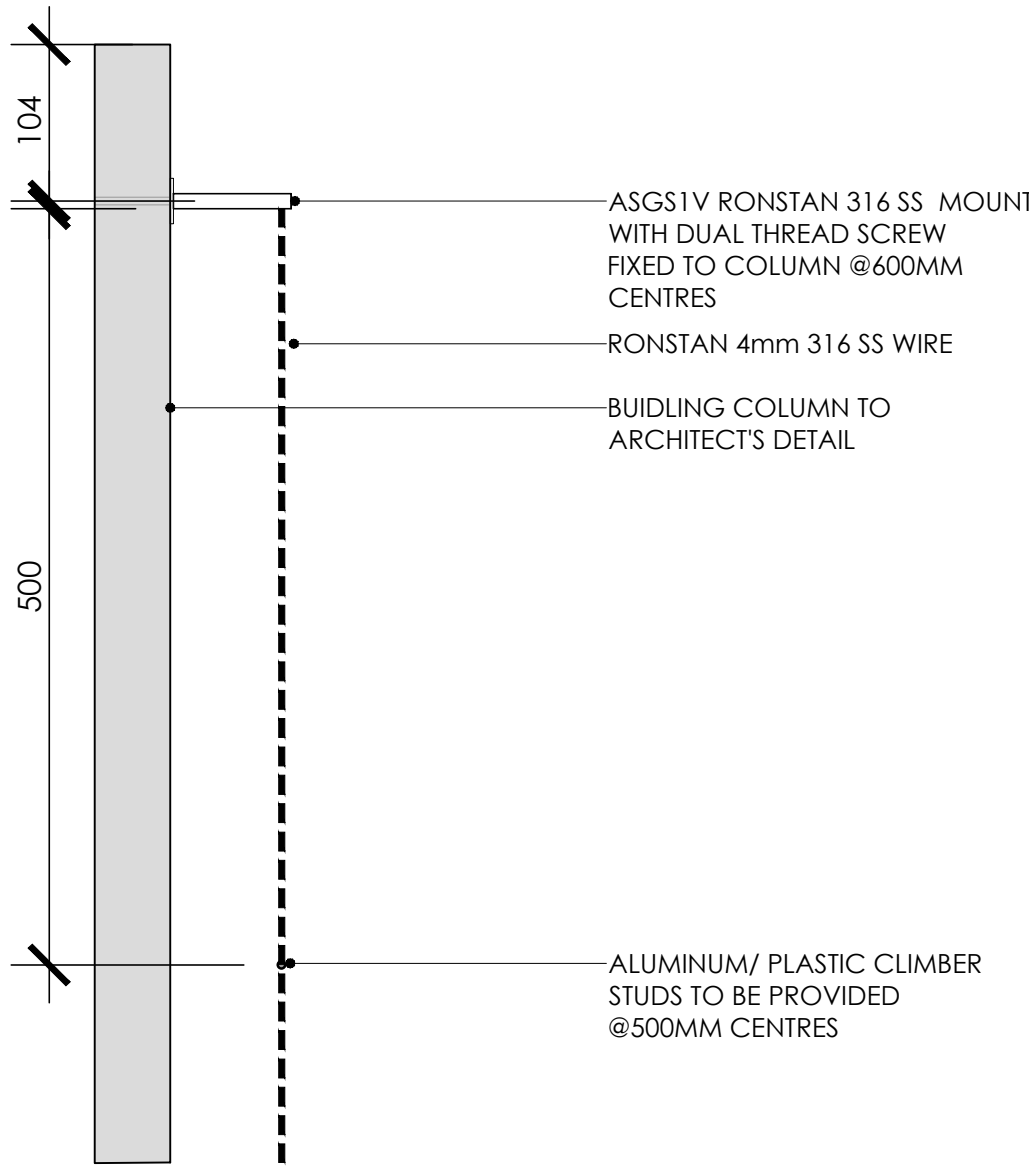
TYPICAL PAVING IRRIGATION CLOSED
SCALE 1:2 @ A1



TYPICAL PAVING IRRIGATION OPEN
SCALE 1:2 @ A1



TYPICAL STEEL EDGE
SCALE 1:5 @ A1



TYPICAL TRELLIS DETAIL
SCALE: 1:5 @ A1

GENERAL SPECIFICATION NOTES

1.0 STANDARDS

1.1 SOILS

- AS 4419: Soils for Landscaping and Garden Use
- AS 3743: Potting Mixes
- AS 4454: Composts, Soil Conditioners and Mulches

1.2 Plants

- AS 2303: Tree Stock for Landscape Use
- AS 4970: Protection of Trees on Development Sites

2.0 PRODUCTS

2.1 MATERIAL

Topsoil

- Source: Provide topsoil, which contains organic matter, is free from stones, contaminants and weeds
- Site: If available, provide material recovered from the site

Turf

- Supplier: Obtain turf from a specialist grower of cultivated turf
- Quality: Provide turf of even thickness, free from weeds and other foreign matter

Fertiliser

- General: Provide proprietary fertilisers, delivered to the site in sealed bags marked to show manufacturer or vendor, weight, fertiliser type, N:P:K ratio, recommended uses and application rates

Plants

- Health: Supply plants with foliage size, texture and colour at time of delivery consistent with the size, texture and colour shown in healthy specimens of the nominated species
- Vigour: Supply plants with extension growth consistent with that exhibited in vigorous specimens of the species nominated
- Damage: Supply plants free from damage and from restricted habit due to growth in nursery rows
- Pests and disease: Supply plants with foliage free from pest attack or disease
- Substitutes: Plant substitution (species or quantities) is not acceptable unless approved by Myles Baldwin Design.

3.0 EXECUTION

3.1 SITE PREPARATION

Weed eradication

- Herbicide: Eradicate weeds with a non-residual glyphosate herbicide in any of its registered formulae, at the recommended maximum rate
- Earth mounds
- Placing: Place clean filling in layers approximately 150 mm thick compacted to 85% of the dry density ratio of the surrounding soil as determined by AS 1289.5.4.1. Minimise slumping and further internal packing down

Edges

- Construct changes in grade over a minimum width of 500 mm to smooth, gradual and rounded profiles with no distinct joint

Existing trees

- Tree protection zones (TPZ) shall be established around all trees to be retained and in accordance of AS 4970. The area within the fence shall be mulched and maintained at 75mm depth
- No excavation, construction activity, grade changes, storage of materials, stock piling, siting of sheds, preparation of mixes or cleaning of tools is permitted within the TPZ

Planting beds

- Excavated: Excavate to bring the subsoil to at least 300 mm below finished design levels. Shape the subsoil to fall to subsoil drains where applicable. Break up the subs to a further depth of 100 mm
- Unexcavated: Remove weeds, roots, building rubble and other debris. Bring the planting bed to 75 mm below finished design levels
- Services and roots: Do not disturb services or tree roots; if necessary, cultivate these areas by hand

Placing topsoil

- General: Spread the topsoil on the prepared subsoil and grade evenly, making the necessary allowances to permit the following:
- Required finished levels and contours may be achieved after light compaction
- Grassed areas may be finished flush with adjacent hard surfaces such as kerbs, paths and mowing strips

Topsoil depths

- General: Spread topsoil to the following typical depths:
- Excavated planting areas: If using organic soil, 300 mm. Refer to typical soil profile detail
- Irrigated grassed areas generally: 150 mm
- Irrigated grassed areas, heavy use (e.g. playing fields, playgrounds, and public parks): 200 mm

Sediment and Erosion Control

- Sediment and erosion control measures are required during the construction of all developments and building works. It shall be the contractor's responsibility that works are carried out in accordance with a sediment and erosion control plan and council/approving authority's requirements.

3.2 TURFING

General

- Supply: Deliver the turf within 24 hours of cutting, and lay it within 36 hours of cutting. Prevent the turf from drying out between cutting and laying. If it is not laid within 36 hours of cutting, roll it out on a flat surface with the grass up, and water as necessary to maintain a good condition
- Laying: Lay the turf in the following manner:
- In stretcher pattern with the joints staggered and close butted
- Parallel with the long sides of level areas, and with contours on slopes
- To finish flush, after tamping, with adjacent finished surfaces of ground, paving edging, or grass seeded areas
- Tamping: Lightly tamp to an even surface immediately after laying. Do not use a roller
- Fertilising: Mix the fertiliser thoroughly into the topsoil before placing the turf. Apply lawn fertiliser at the completion of the first and last mowings, and at other times as required to maintain healthy grass cover
- Watering: Water immediately after laying until the topsoil is moistened to its full depth. Continue watering to maintain moisture to this depth
- Levels: Where levels have deviated from the design levels after placing and watering, lift turf and re-grade topsoil to achieve design levels

3.3 PLANTING

General

- Individual plantings in grassed areas: Excavate a hole twice the diameter of the root ball and at least 100 mm deeper than the root ball. Break up the base of the hole to a further depth of 100 mm, and loosen compacted sides of the hole to prevent confinement of root growth
- Watering: Thoroughly water the plants before planting, immediately after planting, and as required to maintain growth rates free of stress
- Placing: Remove the plant from the container with minimum disturbance to the root ball, ensure that the root ball is moist and place it in its final position, in the center of the hole and plumb, and with the top soil level of the plant root ball level with the finished surface of the surrounding soil
- Fertilising plants: In planting beds and individual plantings, place fertiliser pellets around the plants at the time of planting
- Backfilling: Backfill with topsoil mixture. Lightly tamp and water to eliminate air pockets

3.4 TREES

General

- All trees must be planted by an AQF Level 3 Qualified Arborist, Landscape Gardener or Horticulturalist

Clay Soils

- The base of each tree pit within clay soils shall be laid with 100mm deep scoria. A 90mm ag line ring shall sit within the scoria and drain directly to a suitable location. Lay geo-textile fabric evenly above the scoria, prior to tree placement and backfilling with 80/20 mineral soil

3.5 MULCHING

Placing mulch

- General: Place mulch to the required depth, clear of plant stems, and rake to an even surface flush with the surrounding finished levels. Spread and roll mulch so that after settling, or after rolling, it is smooth and evenly graded between design surface levels sloped towards the base of plant stems in plantation beds, and not closer to the stem than 50 mm in the case of gravel mulches.
- Garden beds: Greenlife Mulch and Compost
- Tree mulch ring: Mushroom compost
- Depths: Spread organic mulch to a depth of 75 mm, and gravel mulch to a depth of 50 mm

3.6 STAKES AND TIES

Stakes

- Material: Hardwood, straight, free from knots or twists, pointed at one end
- Installation: Drive stakes into the ground at least one third of their length, avoiding damage to the root system

Ties

- General: Provide 50 mm hessian webbing ties fixed securely to the stakes, one tie at half the height of the main stem, others as necessary to stabilise the plant

3.7 WATERING

Establishment

- Extent: Available soil moisture content of grass areas and garden beds to be monitored on a weekly basis using an approved moisture probe and water applied on a demand basis. Readings should be taken at a depth of 250mm
- All grass areas and garden beds should be maintained within a range of 50-80% available soil moisture. Under no circumstance should areas under irrigation fall below a level of 30% available soil moisture
- No visible signs of wilting of leaves or stems, with all plants fully turgid at all times.
- No sign of over-watering such as constantly wet soil, brown leaf margins, stem rot or brown spots on foliage

3.8 LANDSCAPE SUBSOIL DRAINAGE

General

- Include subsoil drainage behind retaining walls, along path edges and in mass planting beds, including lawn areas. Maintenance access points shall be every 15m

Materials

- Geotextile fabric: shall consist of a woven or a non-woven type to be manufactured from synthetic materials other than polyamide
- Aggregate: shall be a single size with a nominal dimension of 10-40mm
- Subsoil pipe: shall be 90 mm diameter corrugated flexible slotted PVC pipe in a geofabric sock, or 100mm µPVC if under pavement. All pipes to requirements of AS 1254. Where vehicle loads are encountered, reinforced concrete pipe shall be used only

Construction

- Trenches to be minimum 300mm wide and extend 500mm below the subgrade level or 150mm if into bed rock
- Trenches to be lined with geotextile fabric and backfilled with aggregate. Pipe to be laid 50mm above trench floor
- Prior to backfilling the trench, drainage and connection to stormwater is to be approved by the site manager

3.9 COMPLETION

Cleaning

- Stakes and ties: Remove those no longer required at the end of the planting establishment period
- Temporary fences: Remove temporary protective fences at the end of the planting establishment period

4.0 ESTABLISHMENT & DEFECTS LIABILITY

4.1 ESTABLISHMENT

General

- All landscaping works will have an establishment period of 26 weeks in which the subcontractor will be responsible for the maintenance and upkeep of the contracted scope, unless otherwise noted in the project documentation. If applicable refer to the project manager / builder for confirmation

4.2 DEFECTS LIABILITY PERIOD

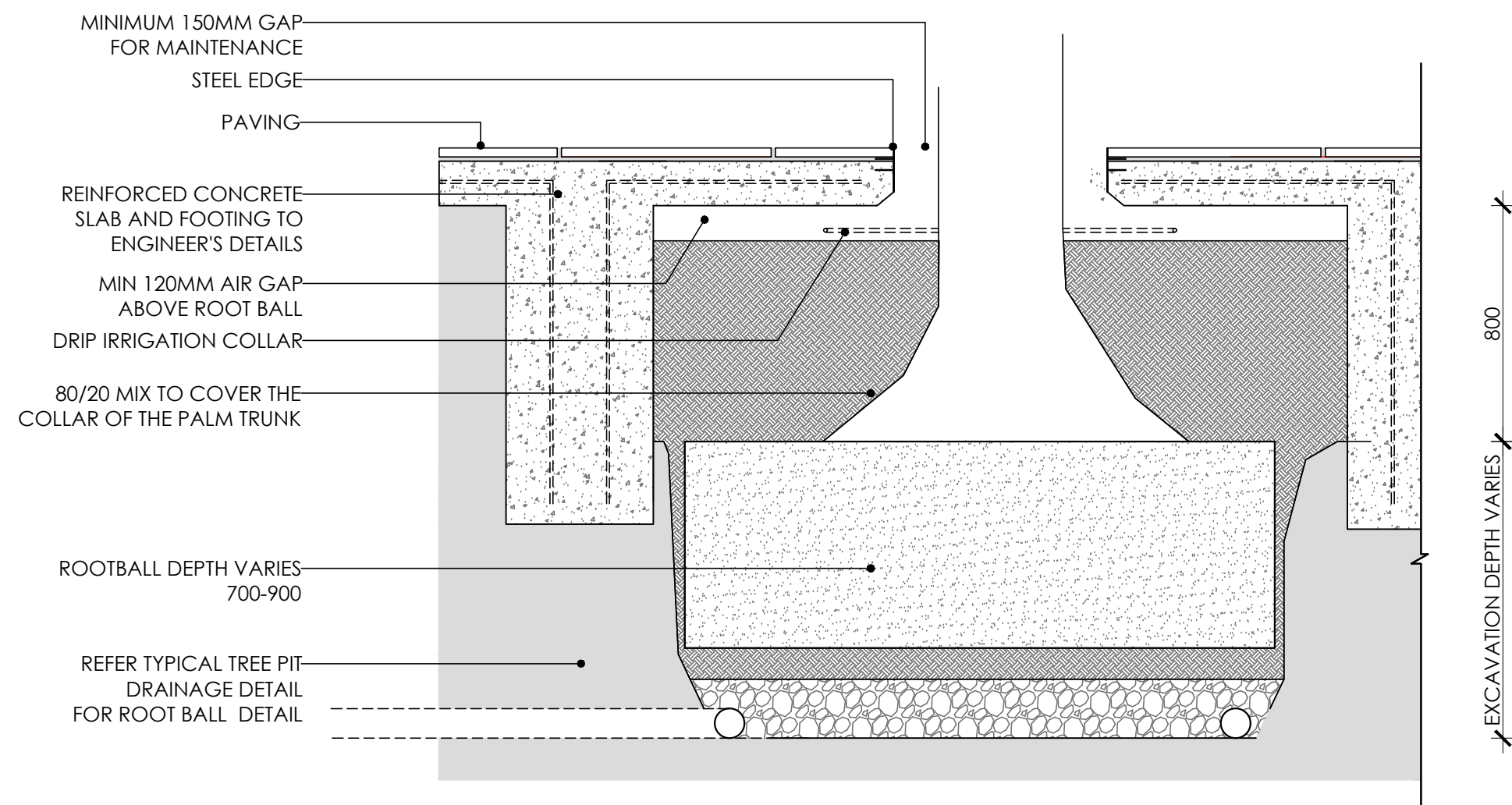
General

- All landscaping works will be subject to a defects liability period of 52 weeks, commencing from the date of Practical Completion, unless otherwise noted in the project documentation. If applicable refer to the project manager / builder for confirmation

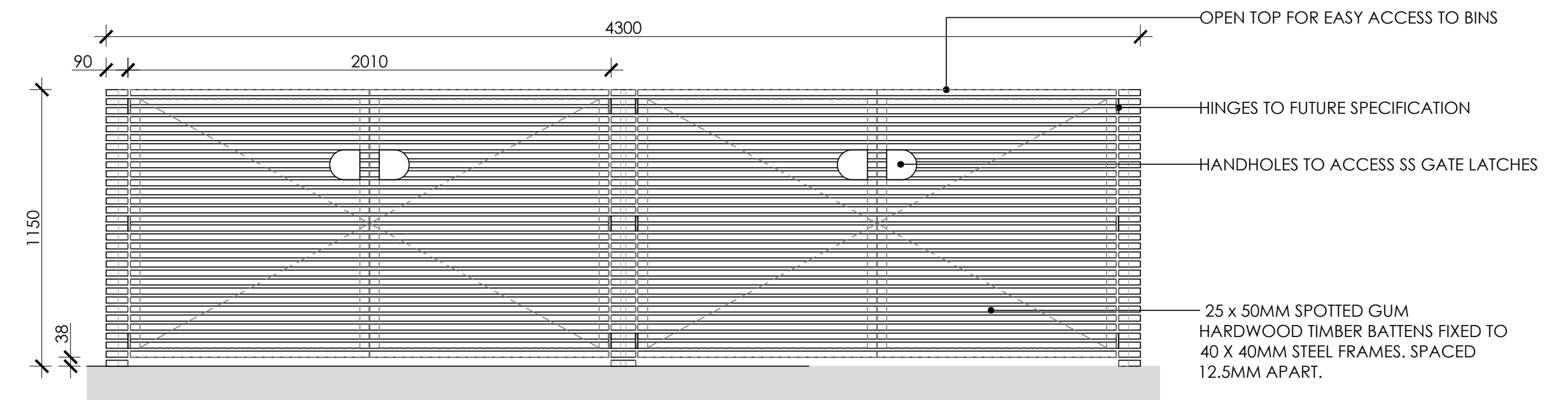
4.3 FAILED PLANTINGS

General

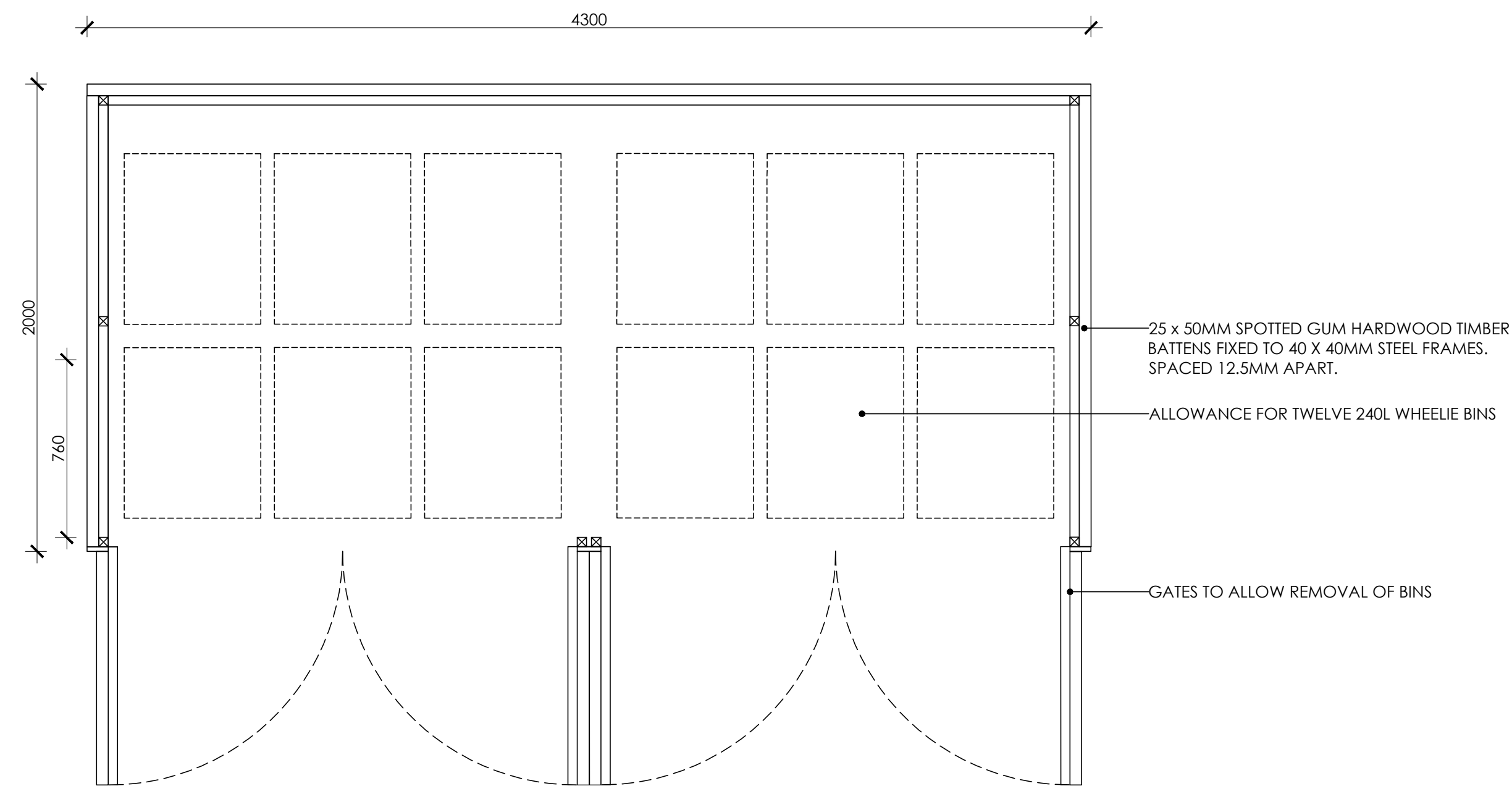
- Photographic images of plants shall be approved by Myles Baldwin Design prior to procurement of replacement plant and tree stock



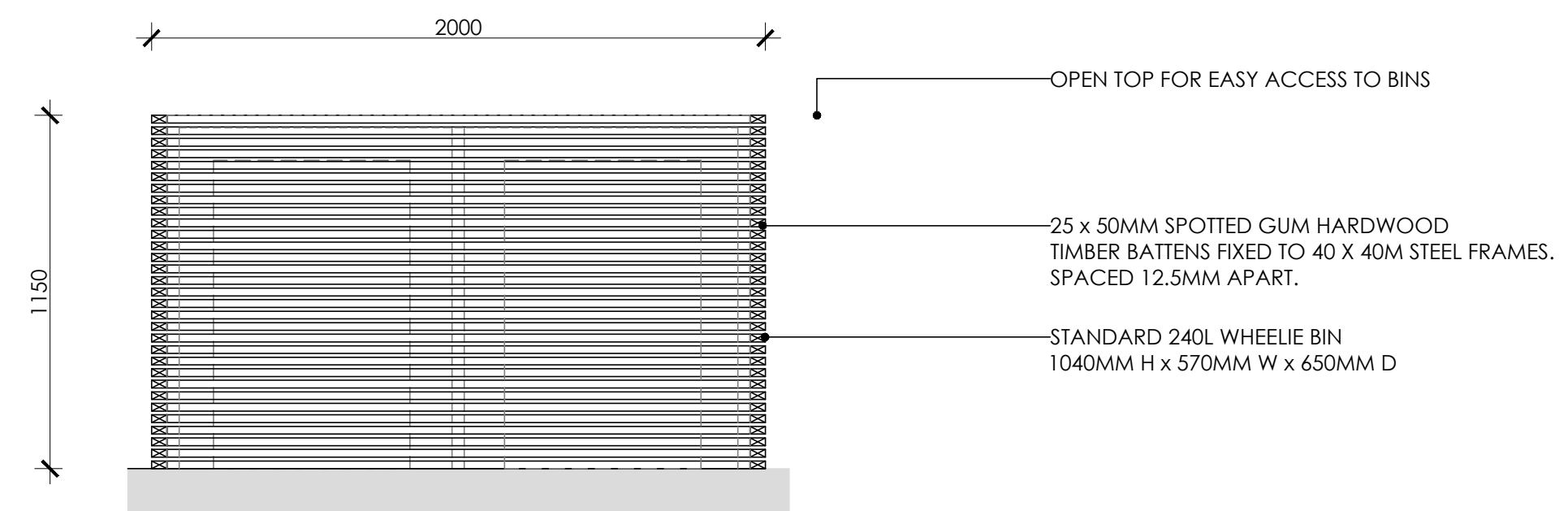
TYPICAL TREE IN PAVING
SCALE 1:20 @ A1



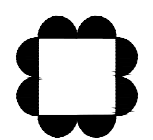
WHEELIE BIN SHELTER - FRONT ELEVATION
SCALE 1:20 @ A1



WHEELIE BIN SHELTER - INTERIOR PLAN
SCALE 1:20 @ A1



WHEELIE BIN SHELTER - SIDE ELEVATION
SCALE 1:20 @ A1



MYLES BALDWIN DESIGN
8 Maddison Lane, Redfern, NSW 2016 Australia
PH +61 2 9699 2622 | www.mylesbaldwin.com

PROJECT:
69-73 MURPHY STREET
CLIENT:
GURNER

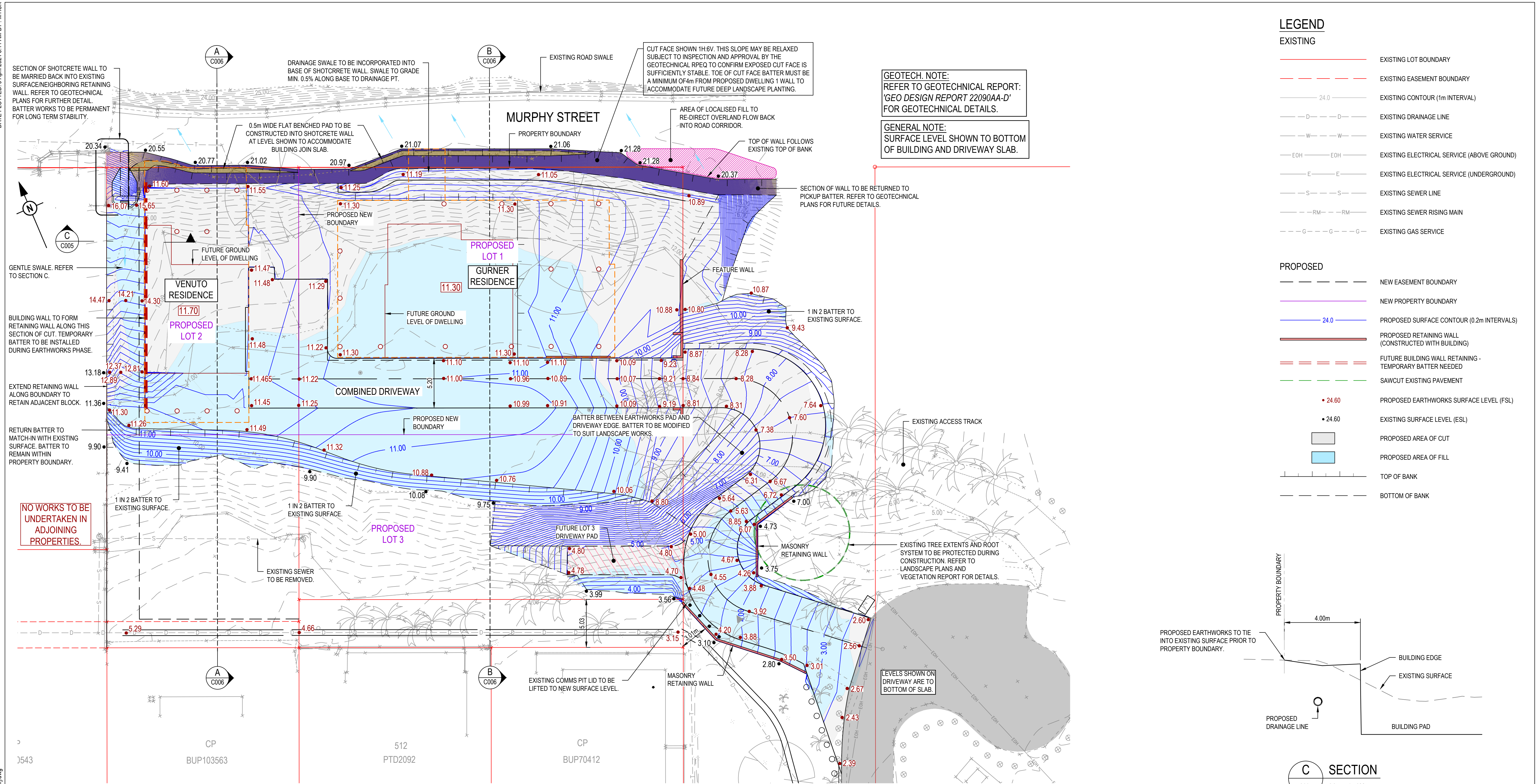
AMENDMENT	DATE	DETAILS
A	14.03.22	ISSUE FOR DA
B	12.07.22	UPDATED ISSUE FOR DA
C	07.08.24	ISSUE FOR DA

MBD MUST BE PRESENT ON-SITE FOR THE POSITIONING OF **ALL PLANTS**.
CONTACT MBD IF DISCREPANCIES OCCUR BETWEEN LANDSCAPE AND CONSULTANTS DOCUMENTS.
BUILDER TO CHECK AND VERIFY ALL DIMENSIONS ON SITE PRIOR TO CONSTRUCTION.

DRAWING:
BIN SHELTER DETAILS

DWG No: 511_DA_36
SCALE: AS NOTED
DRAWN: VK
CHECKED: RM
ISSUE: C
THIS DRAWING IS COPYRIGHT

Annexure 5: Revised Civil Earthworks Plan



LEGEND

EXISTING

- EXISTING LOT BOUNDARY
- EXISTING EASEMENT BOUNDARY
- EXISTING CONTOUR (1m INTERVAL)
- EXISTING DRAINAGE LINE
- EXISTING WATER SERVICE
- EXISTING ELECTRICAL SERVICE (ABOVE GROUND)
- EXISTING ELECTRICAL SERVICE (UNDERGROUND)
- EXISTING SEWER LINE
- EXISTING SEWER RISING MAIN
- EXISTING GAS SERVICE

PROPOSED

- NEW EASEMENT BOUNDARY
- NEW PROPERTY BOUNDARY
- PROPOSED SURFACE CONTOUR (0.2m INTERVALS)
- PROPOSED RETAINING WALL (CONSTRUCTED WITH BUILDING)
- FUTURE BUILDING WALL RETAINING - TEMPORARY BATTER NEEDED
- SAWCUT EXISTING PAVEMENT
- PROPOSED EARTHWORKS SURFACE LEVEL (FSL)
- EXISTING SURFACE LEVEL (ESL)
- PROPOSED AREA OF CUT
- PROPOSED AREA OF FILL
- TOP OF BANK
- BOTTOM OF BANK

C SECTION

SCALE 1: 100

GEOTECHNICAL NOTES:

- ALL UNCONTROLLED FILL TO BE REMOVED AND REUSED WHERE POSSIBLE. UNSUITABLE UNCONTROLLED FILL TO BE DISPOSED OFF SITE. UNCONTROLLED FILL DETECTED UNDER RESIDENCE 3, HOWEVER THE EXTENTS ARE UNKNOWN. GEOTECHNICAL ENGINEER TO SUPERVISE REMOVAL TO ENSURE ALL UNCONTROLLED FILL IS REMOVED BEFORE ANY FILLING COMMENCES.
- BATTER TO RESIDENCE 3 TO BE INSPECTED AND CERTIFIED FOR SHORT TERM (APPROX. 3 MONTHS) STABILITY BY GEOTECHNICAL ENGINEER. IF NECESSARY, SHOTCRETE MAYBE REQUIRED. A PERMANENT RETAINED SOLUTION WILL BE UNDERTAKEN BY OTHERS

CONTRACTOR TO REVIEW GEO CONSULTANTS DRAWINGS 22090AAD FIG 1 THROUGH TO FIG 5 PRIOR TO COMMENCING WORKS TO ENSURE WORKS ARE UNDERTAKEN IN ACCORDANCE WITH AND COORDINATED WITH THESE PLANS. ANY DISCREPANCIES BETWEEN PLANS ARE TO BE BROUGHT TO THE ATTENTION OF THE SUPERVISING GEOTECHNICAL AND CIVIL ENGINEERS BEFORE PROCEEDING.

EARTHWORKS VOLUMES:

CUT: 2626.190m³
FILL: 784.411m³
BALANCE: 1841.779m³

NOTE:

- EARTHWORKS VOLUMES DO NOT CONSIDER BULKING FACTORS AND ARE TAKEN AS RAW VALUES.
- VOLUMES TAKEN TO FINISHED EARTHWORKS SURFACE.

RPEQ ENGINEER:

APPLIN CONSULTING

M 0414 768 109 | E greg@applinconsulting.com.au

DESIGN & DOCUMENTATION:

PROGRESSION

DESIGN & DEVELOPMENT

M 0417 383 564 | E matthew@progressiondesign.com.au
www.progressiondesign.com.au

DRAWN

M. TICKNER

DESIGNED

M. TICKNER

APPROVED

G. APPLIN

DATE

16.06.2023

RPEQ 6073

CLIENT GURNER TM NOMINEES PTY. LTD.

PROJECT

69-73 MURPHY ST. PORT DOUGLAS

TITLE

CIVIL WORKS PACKAGE
BULK EARTHWORKS PLANS

STATUS

FOR APPROVAL

SCALE

AS SHOWN

SIZE

A1

DRAWING NUMBER

22031-C005

REVISION

4