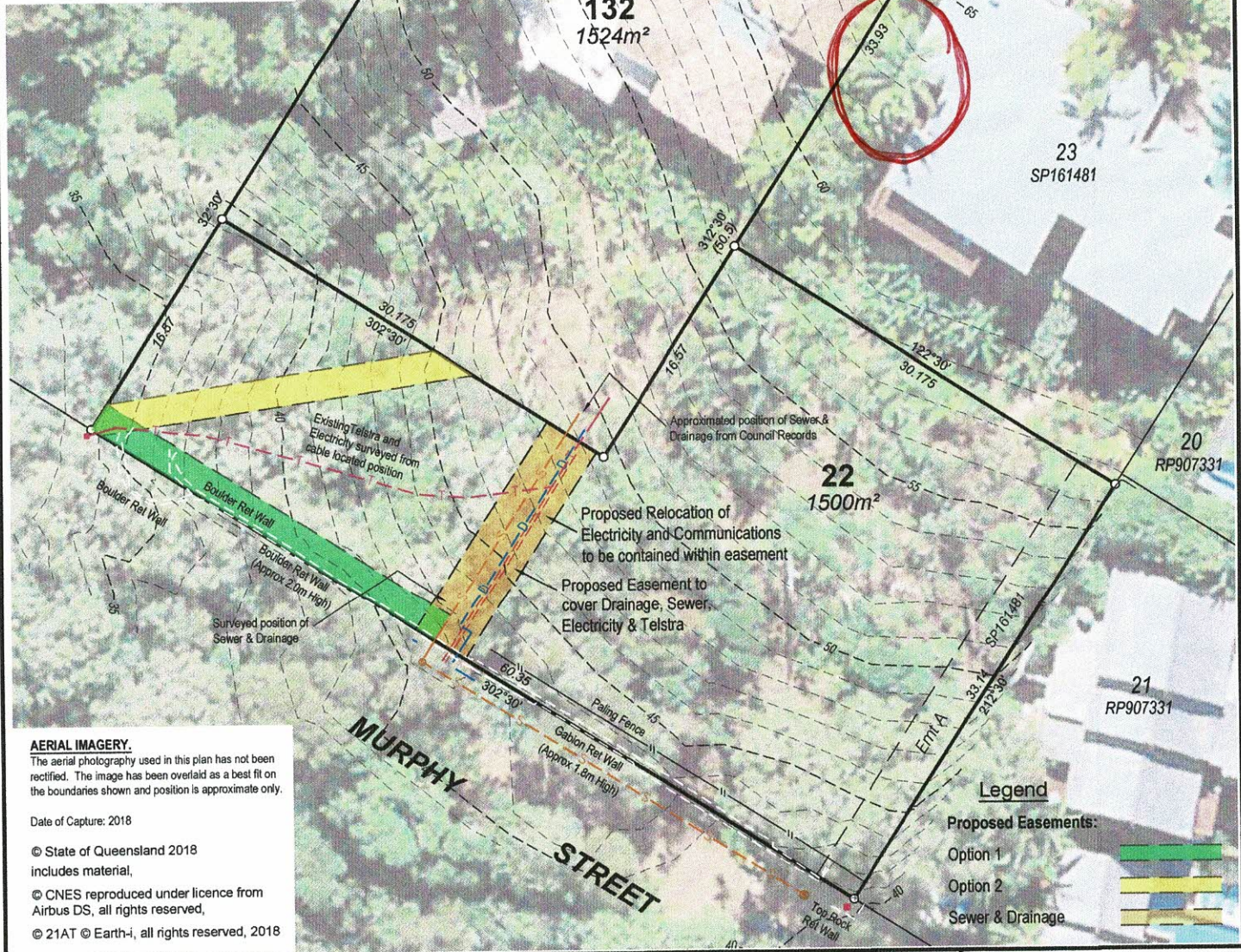


**IMPORTANT NOTE**

- This plan was prepared for the sole purposes of the client for the specific purpose of accompanying an application to the Douglas Shire Council for a reconfiguration of a lot described on this plan. This plan is strictly limited to the Purpose and does not apply directly or indirectly and will not be used for any other application, purpose, use or matter. The plan is presented without the assumption of a duty of care to any other person (other than the Client) ("Third Party") and may not be relied on by Third Party.
- RPS Australia East Pty Ltd will not be liable (in negligence or otherwise) for any direct or indirect loss, damage, liability or claim arising out of or incidental to:
  - Third Party publishing, using or relying on the plan;
  - RPS Australia East Pty Ltd relying on information provided to it by the Client or a Third Party where the information is incorrect, incomplete, inaccurate, out-of-date or unreasonable;
  - any inaccuracies or other faults with information or data sourced from a Third Party;
  - RPS Australia East Pty Ltd relying on surface indicators that are incorrect or inaccurate;
  - the Client or any Third Party not verifying information in this plan where recommended by RPS Australia East Pty Ltd;
  - lodgement of this plan with any local authority against the recommendation of RPS Australia East Pty Ltd;
  - the accuracy, reliability, suitability or completeness of any approximations or estimates made or referred to by RPS Australia East Pty Ltd in this plan.
- Without limiting paragraph 1 or 2 above, this plan may not be copied, distributed, or reproduced by any process unless this note is clearly displayed on the plan.
- Scale shown is correct for the original plan and any copies of this plan should be verified by checking against the bar scale.
- The dimensions, area, size and location of improvements, flood information (if shown) and number of lots shown on this plan are approximate only and may vary.
- Cadastral boundaries are obtained by title dimensions and/or digitizing from existing cadastral maps. These boundaries have not been verified and are approximate only.
- The contours shown on this plan are by 2001 & 2003 field survey and are suitable only for the purposes of this application. The accuracy of the contours has not been verified and no reliance should be placed upon such contours for any purpose other than for the purpose of this application for a reconfiguration of a lot.



**AERIAL IMAGERY.**

The aerial photography used in this plan has not been rectified. The image has been overlaid as a best fit on the boundaries shown and position is approximate only.

Date of Capture: 2018

© State of Queensland 2018 includes material,

© CNES reproduced under licence from Airbus DS, all rights reserved,

© 21AT © Earth-i, all rights reserved, 2018

**Legend**

Proposed Easements:

- Option 1
- Option 2
- Sewer & Drainage