



SETTLEMENT AREAS NORTH OF THE DAINTREE RIVER LOCALITY

**TABLES OF ASSESSMENT
&
MAPS**



THIS PAGE SHOULD BE BLANK



SETTLEMENT AREAS NORTH OF THE DAINTREE RIVER LOCALITY – TABLE 1

DEVELOPMENT ACTIVITY	PLANNING AREA						GUIDE TO THE APPLICABILITY OF CODES												
MATERIAL CHANGE OF USE							Settlement Areas North of the Daintree River Locality Code	Planning Area Code	OVERLAYS			LAND USE CODE		GENERAL					
DEFINED LAND USE									Acid Sulfate Soils	Cultural Heritage and Valuable Sites	Natural Hazards			Design & Siting of Advertising Devices	Filling and Excavation	Landscaping	Natural Areas and Scenic Amenity	Vehicle Parking and Access	Sustainable Development
Aircraft Landing Facility - Commercial	I	I	I	I	I	I	A	A	O	O	O	Yes	A	A	A	*A	A	*A	
Aquaculture	*I	I	I	I	I	I	A	A	O	O	O	*Yes	A	A	A	*A	A	*A	
Business Facilities – using an existing Building	I	I	I	I	I	C	A	A	O	O	O	No	A	A	A	*A	A	*A	
Business Facilities – not using an existing Building	I	I	I	I	I	I	A	A	O	O	O	No	A	A	A	*A	A	*A	
Camping Ground	*I	*I	I	I	I	I	A	A	O	O	O	Yes	A	A	A	*A	A	*A	
Caravan Park	I	I	I	I	I	I	A	A	O	O	O	Yes	A	A	A	*A	A	*A	
Caretaker's Residence	C	I	I	I	I	I	A	A	O	O	O	Yes		A	A	*A	A		
Car Park	I	I	I	I	I	I	A	A	O	O	O	Yes	A	A	A	*A	A		
Cemetery & Crematorium	I	I	I	I	I	I	A	A	O	O	O	No	A	A	A	*A	A	*A	
Child Care Centre	I	I	I	I	I	I	A	A	O	O	O	Yes	A	A	A	*A	A	*A	
Display Facilities	I	I	I	I	I	I	A	A	O	O	O	Yes	A	A	A	*A	A	*A	
Educational Establishment	I	I	I	I	I	I	A	A	O	O	O	No	A	A	A	*A	A	*A	
Extractive Industry	I	I	I	I	I	I	A	A	O	O	O	Yes	A	A	A	*A	A		
Health Facility	I	I	I	I	I	I	A	A	O	O	O	No	A	A	A	*A	A	*A	
Holiday Accommodation	I	I	I	I	I	I	A	A	O	O	O	**Yes	A	A	A	*A	A	*A	
Home Activity	C	I	I	C	C	I	A	A	O	O	O	Yes	A		A	*A	A		
Home Based Business	C	I	I	C	C	I	A	A	O	O	O	Yes	A	A	A	*A	A	*A	
Home Industry	*I	*I	I	I	I	I	A	A	O	O	O	No		A	A	*A			
House	C	C	**I	C	C	C	A	A	O	O	O	Yes		A	A	*A	A		
Indoor Sports & Entertainment	I	I	I	I	I	I	A	A	O	O	O	No	A	A	A	*A	A	*A	
Industry	I	I	I	I	I	I	A	A	O	O	O	No	A	A	A	*A	A		
Intensive Animal Husbandry	C	I	I	I	I	I	A	A	O	O	O	*Yes	A	A	A	*A	A	*A	
Interpretive Facility	I	I	I	I	I	I	A	A	O	O	O	Yes	A	A	A	*A	A	*A	

NOTE: Self Assessable development converts to Code Assessable development if the development cannot comply in full with the applicable Acceptable Solutions in any relevant Code

KEY

E	Exempt
S	Self Assessable
C	Code Assessable
I	Impact Assessable
*I	Impact Assessable, when included in the Degarra/Bloomfield Area. Elsewhere in the Locality, Impact Assessable (Inconsistent)
I	Impact Assessable (Inconsistent)
*I	Impact Assessable (Inconsistent) unless located on Lot 551 on RP 748411, then Impact Assessable
**I	Impact Assessable (Inconsistent) unless compliant with either A23.1, A27.1 or A36.1 of the Locality Code and then Code Assessable.
A	The Code is Applicable
*A	If the circumstances described in the Applicability of the Code are triggered, the Code applies
AA	The Code is applicable for all development EXCEPT Self Assessable development.
O	Refer to the Overlay Maps for the Settlement Areas North of the Daintree River Locality. If the site is affected by an Overlay and if the circumstances described in the Applicability of the relevant Code are triggered, the Code for the Overlay applies
*	See – Aquaculture & Intensive Animal Husbandry Code
**	See – Multi-Unit Housing/Holiday Accommodation/Retirement Facility Code

THIS PAGE SHOULD BE BLANK

**SETTLEMENT AREAS NORTH OF THE DAINTREE RIVER LOCALITY – TABLE 1**

DEVELOPMENT ACTIVITY	PLANNING AREA						GUIDE TO THE APPLICABILITY OF CODES																	
MATERIAL CHANGE OF USE							Rural	Rural Settlement	Conservation				Settlement Areas North of the Daintree River Locality Code	Planning Area Code	OVERLAYS			LAND USE CODE	GENERAL					
DEFINED LAND USE									Rainforest Conservation Precinct	Rainforest Residential Precinct	Rainforest Tourism Precinct	Rainforest Commercial/Community Precinct			Acid Sulfate Soils	Cultural Heritage and Valuable Sites	Natural Hazards		Design & Siting of Advertising Devices	Filling and Excavation	Landscaping	Natural Areas and Scenic Amenity	Vehicle Parking and Access	Sustainable Development
	Multi-Unit Housing	I	I	I	I	I	I	A	A	O	O	O	**Yes	A	A	A	*A	A	*A					
Off Premises Advertising Device	I	I	I	I	I	I	A	A	O	O	O	No	A		A	*A								
Outdoor Sport & Recreation	I	I	I	I	I	I	A	A	O	O	O	No	A	A	A	*A	A	*A						
Outstation/Seasonal Camp	I	I	I	I	I	I	A	A	O	O	O	No		A	A	*A	A							
Park & Open Space	E	E	I	I	C	I	A	A	O	O	O	No		A	A	*A	A							
Place of Assembly	I	I	I	I	I	I	A	A	O	O	O	No	A	A	A	*A	A	*A						
Primary Industry	C	I	I	I	C	I	A	A	O	O	O	Yes			A	*A	A							
Private Forestry	C	I	I	I	C	I	A	A	O	O	O	Yes			A	*A	A							
Public Utilities & Facilities	C	C	I	I	I	I	A	A	O	O	O	No		A	A	*A	A	*A						
Restaurant – using an existing Building	*I	I	I	I	I	C	A	A	O	O	O	No	A		A	*A	A	*A						
Restaurant – not using an existing Building	*I	I	I	I	I	I	A	A	O	O	O	No	A	A	A	*A	A	*A						
Retirement Facility	I	I	I	I	I	I	A	A	O	O	O	**Yes	A	A	A	*A	A	*A						
Service Industry	I	I	I	I	I	I	A	A	O	O	O	No	A	A	A	*A	A	*A						
Service Station	*I	I	I	I	I	I	A	A	O	O	O	Yes	A	A	A	*A	A	*A						
Shopping Facility – using an existing Building	I	I	I	I	I	C	A	A	O	O	O	No	A		A	*A	A	*A						
Shopping Facility – not using an existing Building	I	I	I	I	I	I	A	A	O	O	O	No	A	A	A	*A	A	*A						
Short Term Accommodation	I	I	I	I	I	I	A	A	O	O	O	Yes	A	A	A	*A	A	*A						
Special Residential Use	I	I	I	I	I	I	A	A	O	O	O	No		A	A	*A	A	*A						
Staff Quarters	I	I	I	I	I	I	A	A	O	O	O	No		A	A	*A	A	*A						
Tavern	I	I	I	I	I	I	A	A	O	O	O	No	A	A	A	*A	A							
Telecommunication Facilities	C	C	I	I	I	I	A	A	O	O	O	Yes	A	A	A	*A	A	*A						
Tourist Attraction	I	I	I	I	I	I	A	A	O	O	O	Yes	A	A	A	*A	A	*A						
Veterinary Facilities	I	I	I	I	I	I	A	A	O	O	O	No	A	A	A	*A	A	*A						
Other-Undefined (Except Use for a Road)	I	I	I	I	I	I	A	A	O	O	O	No	A	A	A	*A	A	*A						

NOTE: Self Assessable development converts to Code Assessable development if the development cannot comply in full with the applicable Acceptable Solutions in any relevant Code

KEY

E	Exempt
S	Self Assessable
C	Code Assessable
I	Impact Assessable
*I	Impact Assessable, when included in the Degarra/Bloomfield Area. Elsewhere in the Locality, Impact Assessable (Inconsistent)
I	Impact Assessable (Inconsistent)
*I	Impact Assessable (Inconsistent) unless located on Lot 551 on RP 748411, then Impact Assessable
**I	Impact Assessable (Inconsistent) unless compliant with either A23.1, A27.1 or A36.1 of the Locality Code and then Code Assessable.
A	The Code is Applicable
*A	If the circumstances described in the Applicability of the Code are triggered, the Code applies
AA	The Code is applicable for all development EXCEPT Self Assessable development.
O	Refer to the Overlay Maps for the Settlement Areas North of the Daintree River Locality. If the site is affected by an Overlay and if the circumstances described in the Applicability of the relevant Code are triggered, the Code for the Overlay applies
*	See – Aquaculture & Intensive Animal Husbandry Code
**	See – Multi-Unit Housing/Holiday Accommodation/Retirement Facility Code

THIS PAGE SHOULD BE BLANK



SETTLEMENT AREAS NORTH OF THE DAINTREE RIVER LOCALITY – TABLE 2

DEVELOPMENT ACTIVITY	PLANNING AREAS				GUIDE TO APPLICABILITY OF CODES												
					Settlement Areas North of the Daintree River Locality Code	Planning Area Code	OVERLAYS				GENERAL						
							Acid Sulfate Soils	Cultural Heritage & Valuable Sites	Natural Hazards		Design & Siting of Advertising Devices	Filling & Excavation	Landscaping	Natural Areas and Scenic Amenity	Reconfiguring a Lot	Sustainable Development	Vegetation Management
	Rural	Rural Settlement	Conservation														
Reconfiguring a Lot	C	C	I		A	A	O	O	O				*A	A			
Operational Work Associated with Reconfiguring a Lot	C	C	C		A	A	O	O	O			A	A				
Operational Work - Filling or Excavation not associated with a Material Change of Use	C	C	C		A	A	O	O	O			A		*A			
Operational Work - Engineering Works not associated with a Material Change of Use	C	C	C		A	A	O	O	O			A		*A			
Operational Work - Placing an Advertising Device on Premises not associated with a Material Change of Use	C	C	C		A	A				A			*A				
Operational Work – Vegetation Management	S	S	S														A
Building Work other than Minor Building Work not associated with a Material Change of Use	E	C	C		A	A							*A				

KEY

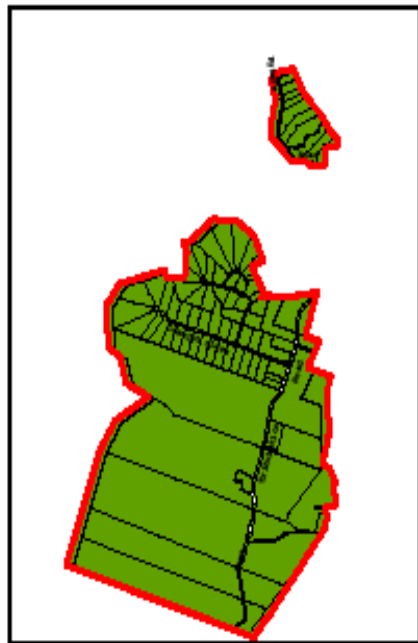
E	Exempt
S	Self Assessable
C	Code Assessable
I	Impact Assessable
I	Impact Assessable (Inconsistent)

A	The Code is Applicable
*A	If the circumstances described in the Applicability of the Code are triggered, the Code applies

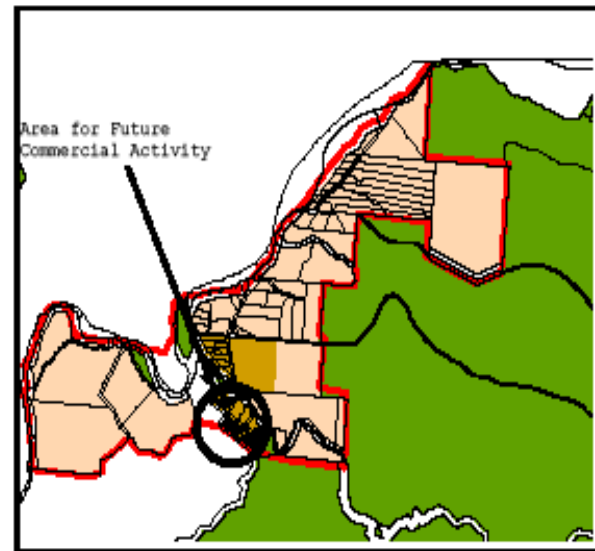
O	Refer to the Overlay Maps for the Settlement Areas North of the Daintree River Locality. If the site is affected by an Overlay and if the circumstances described in the Applicability of the relevant Code are triggered, the Code for the Overlay applies
---	---

NOTE: Self Assessable development converts to Code Assessable development if the development cannot comply in full with the applicable Acceptable Solutions in any relevant Code

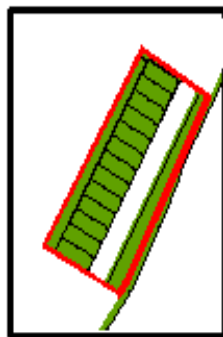
THIS PAGE SHOULD BE BLANK



Cape Tribulation

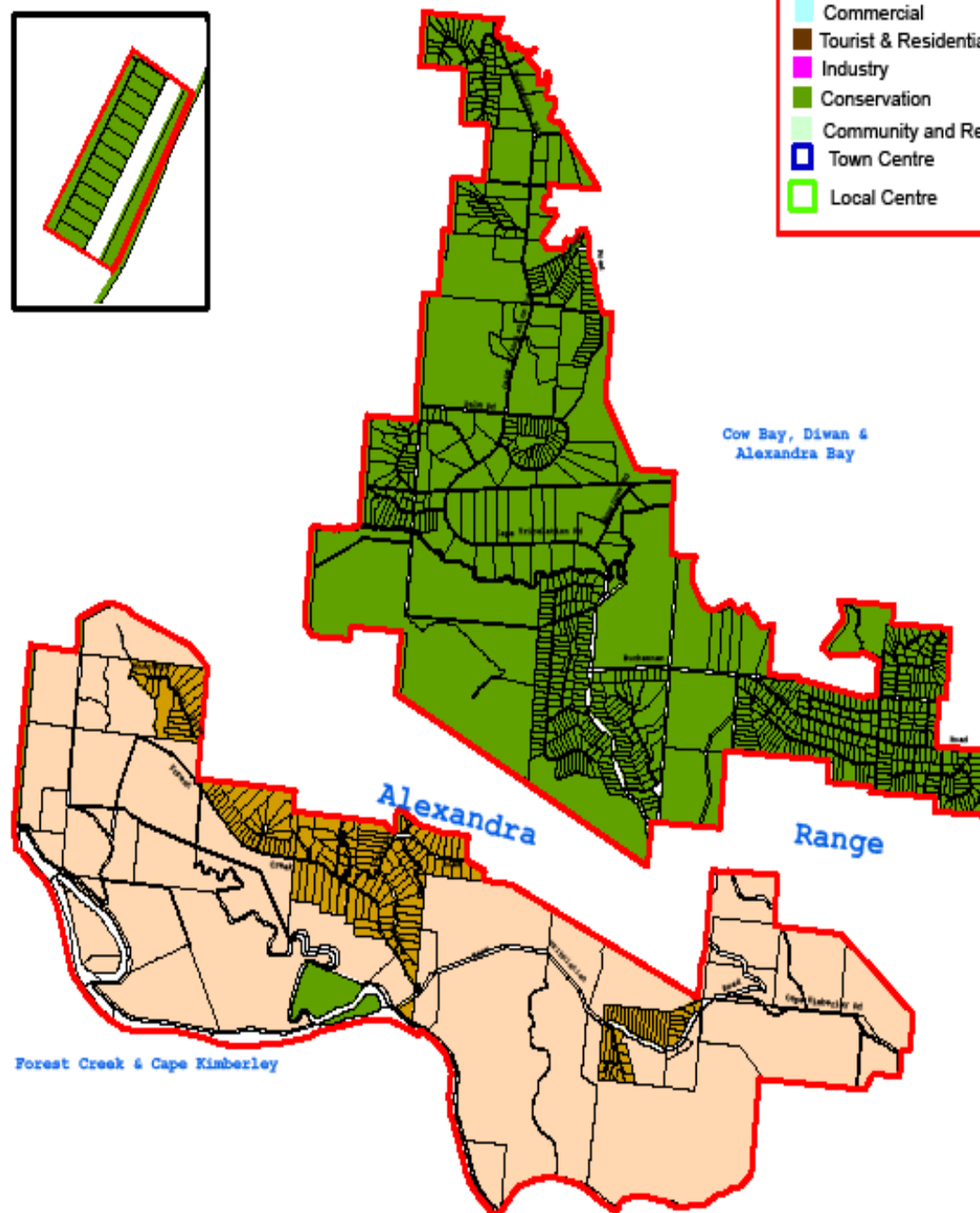


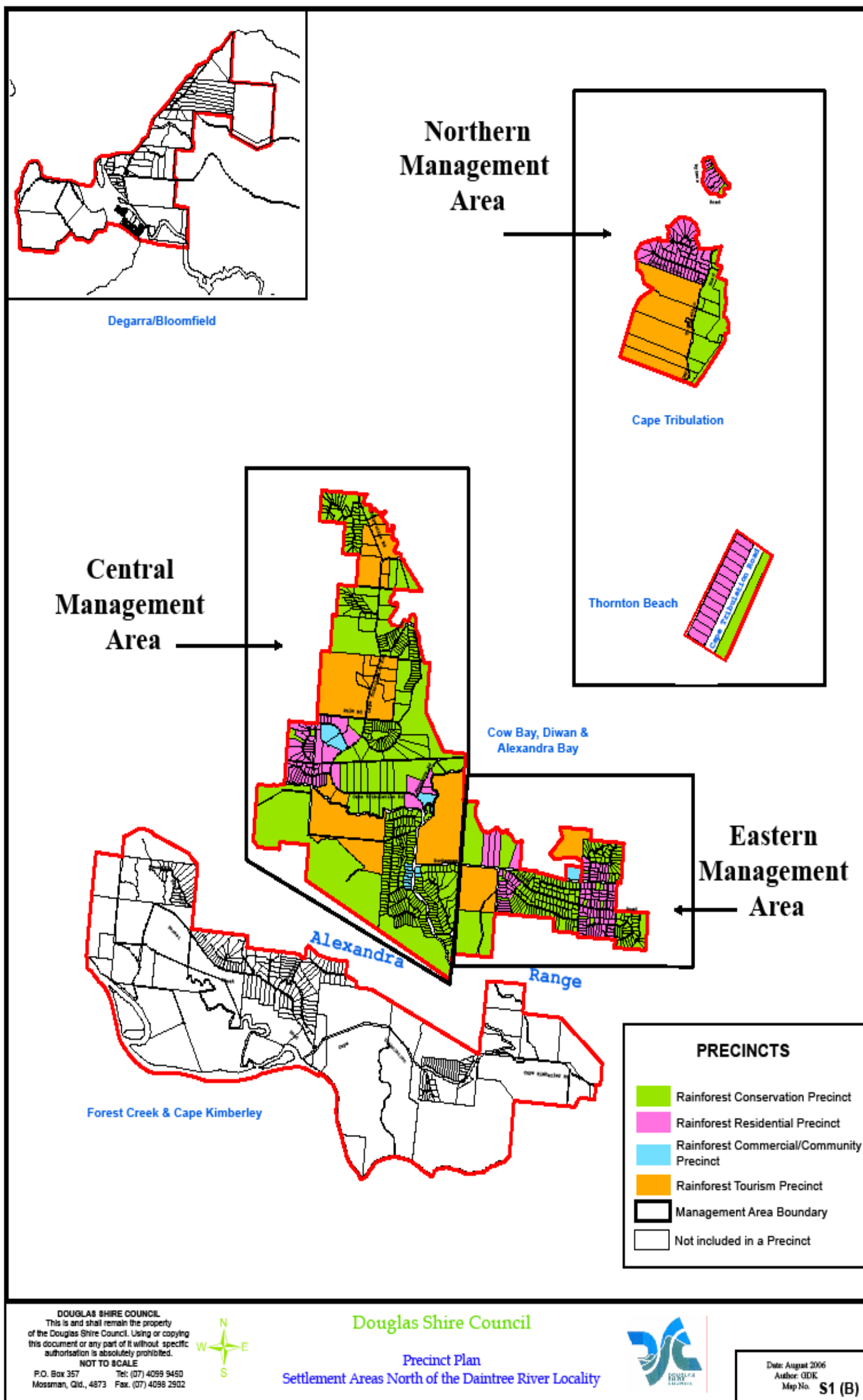
Bloomfield/Degarra

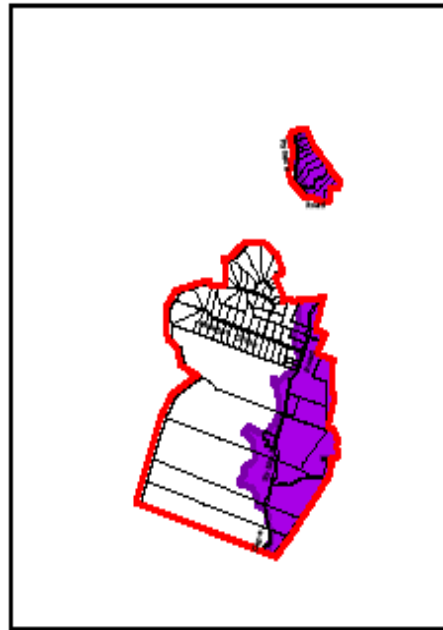


Thornton Beach

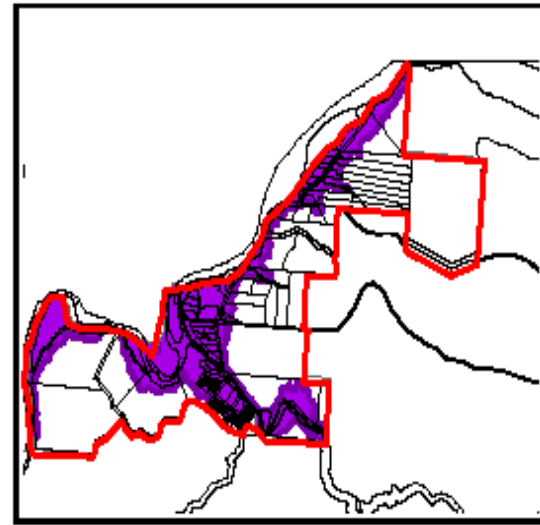
Planning Areas	
	Rural
	Rural Settlement
	Residential 1
	Residential 2
	Commercial
	Tourist & Residential
	Industry
	Conservation
	Community and Recreational Facilities
	Town Centre
	Local Centre



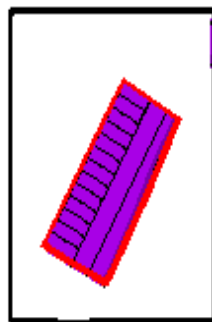




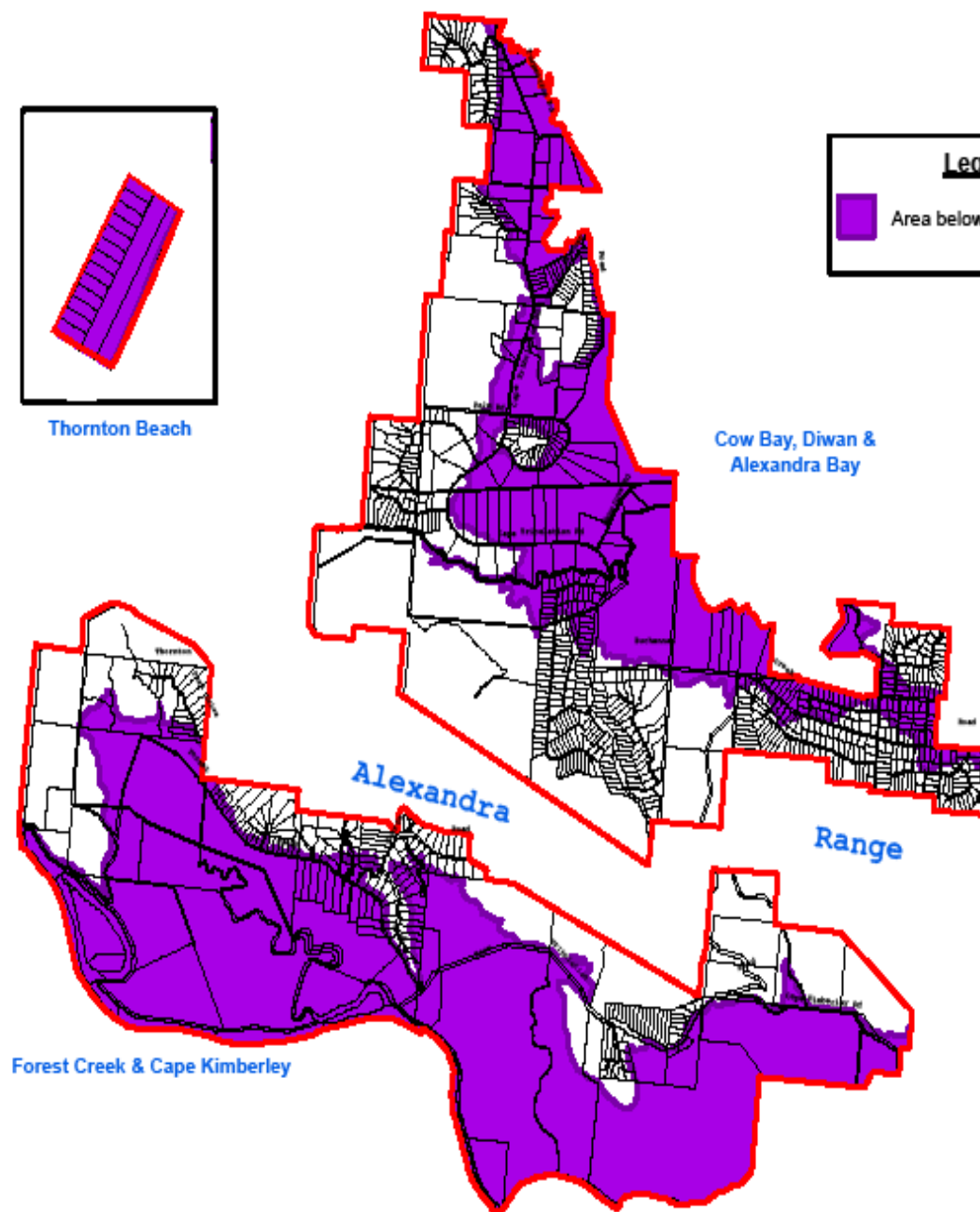
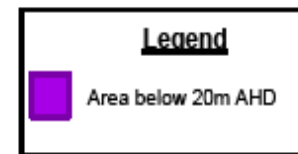
Cape Tribulation

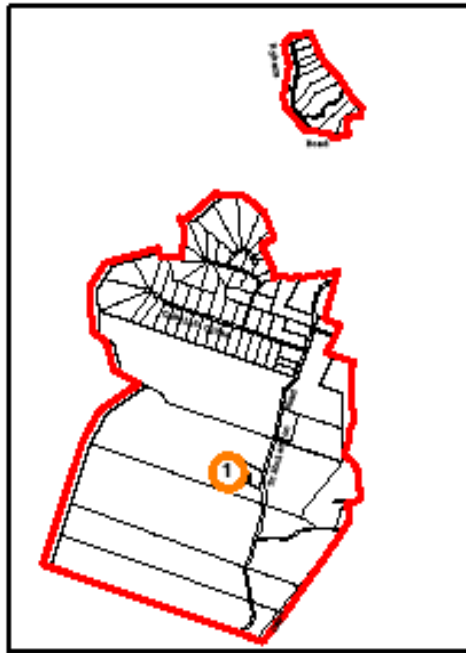


Bloomfield/Degarra

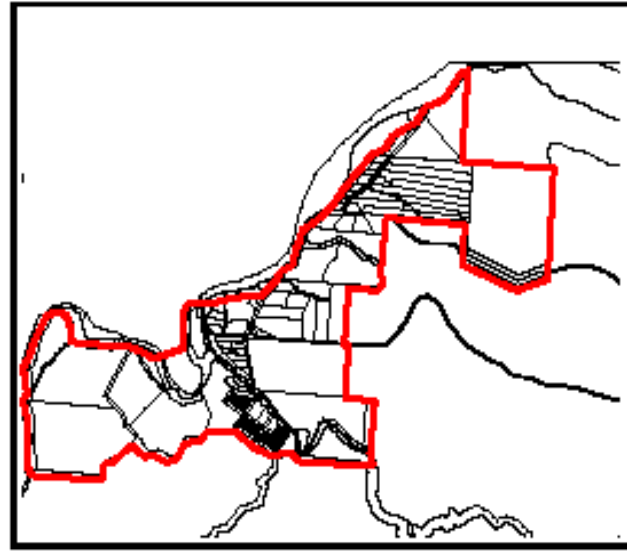


Thornton Beach

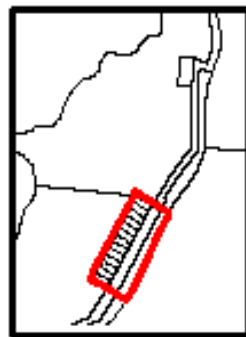
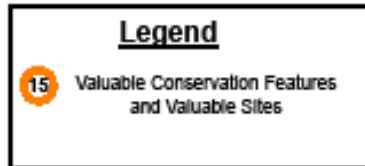




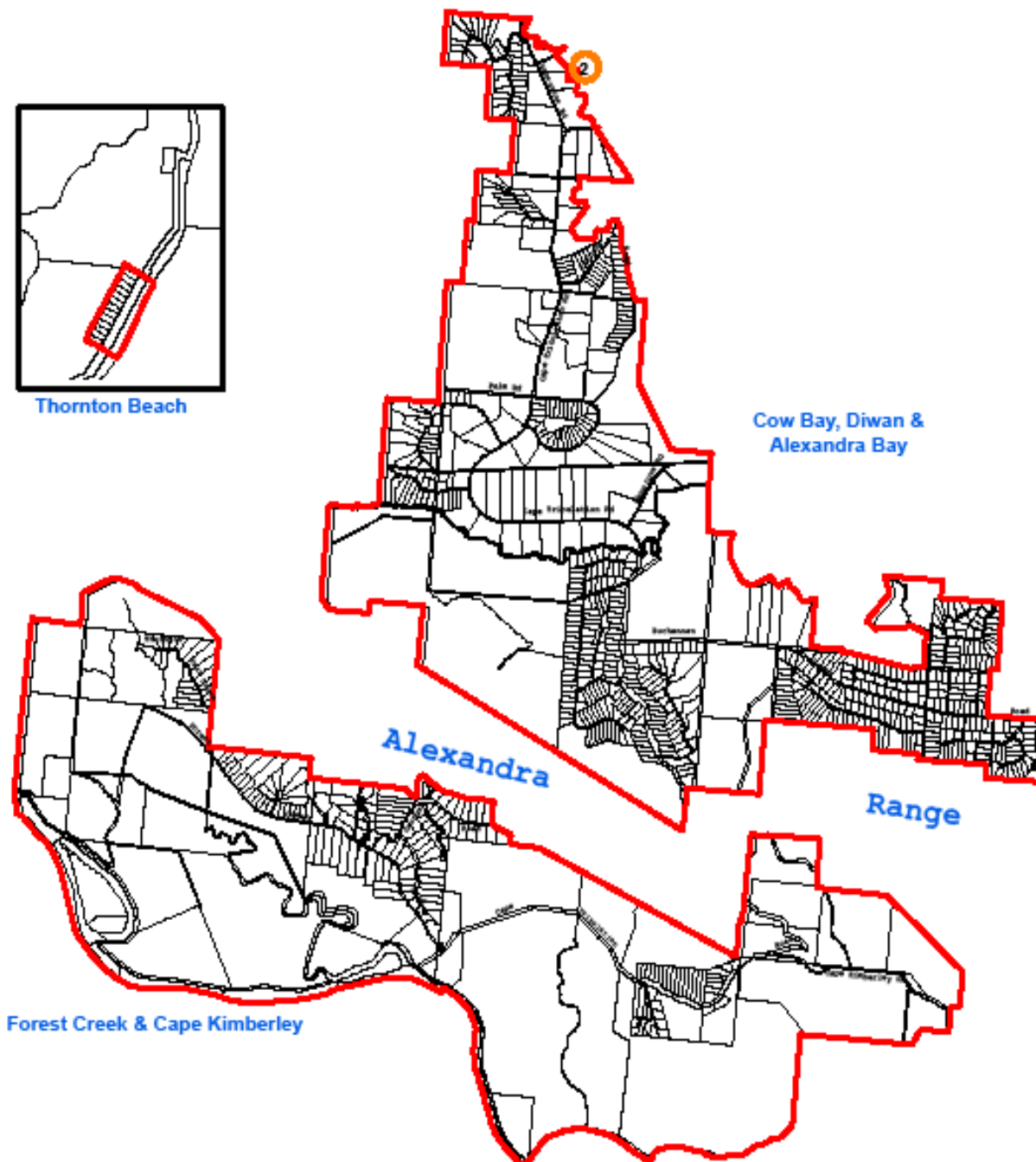
Cape Tribulation

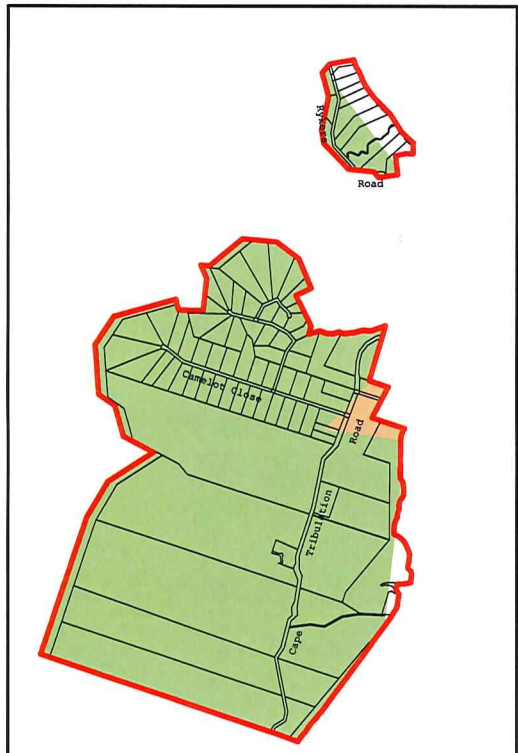


Bloomfield/Degarra

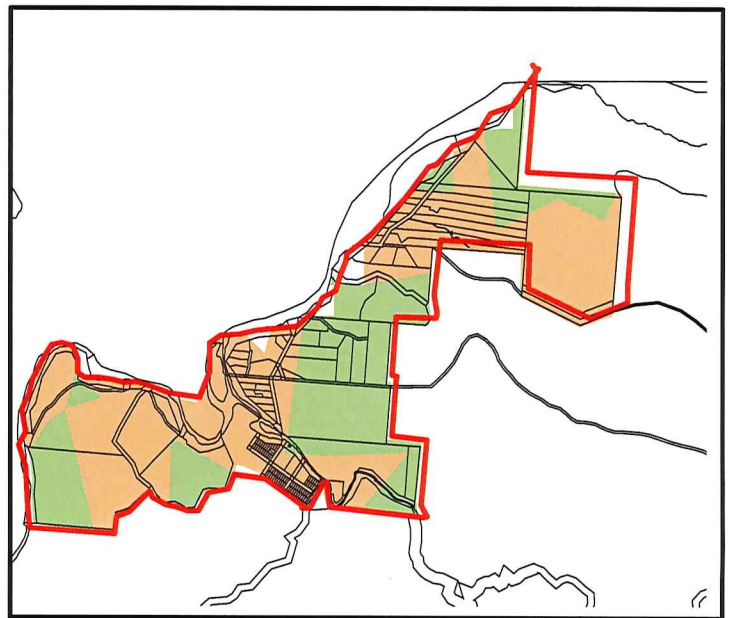


Thornton Beach





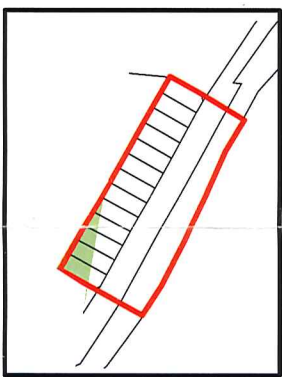
Cape Tribulation





Bloomfield/Degarra

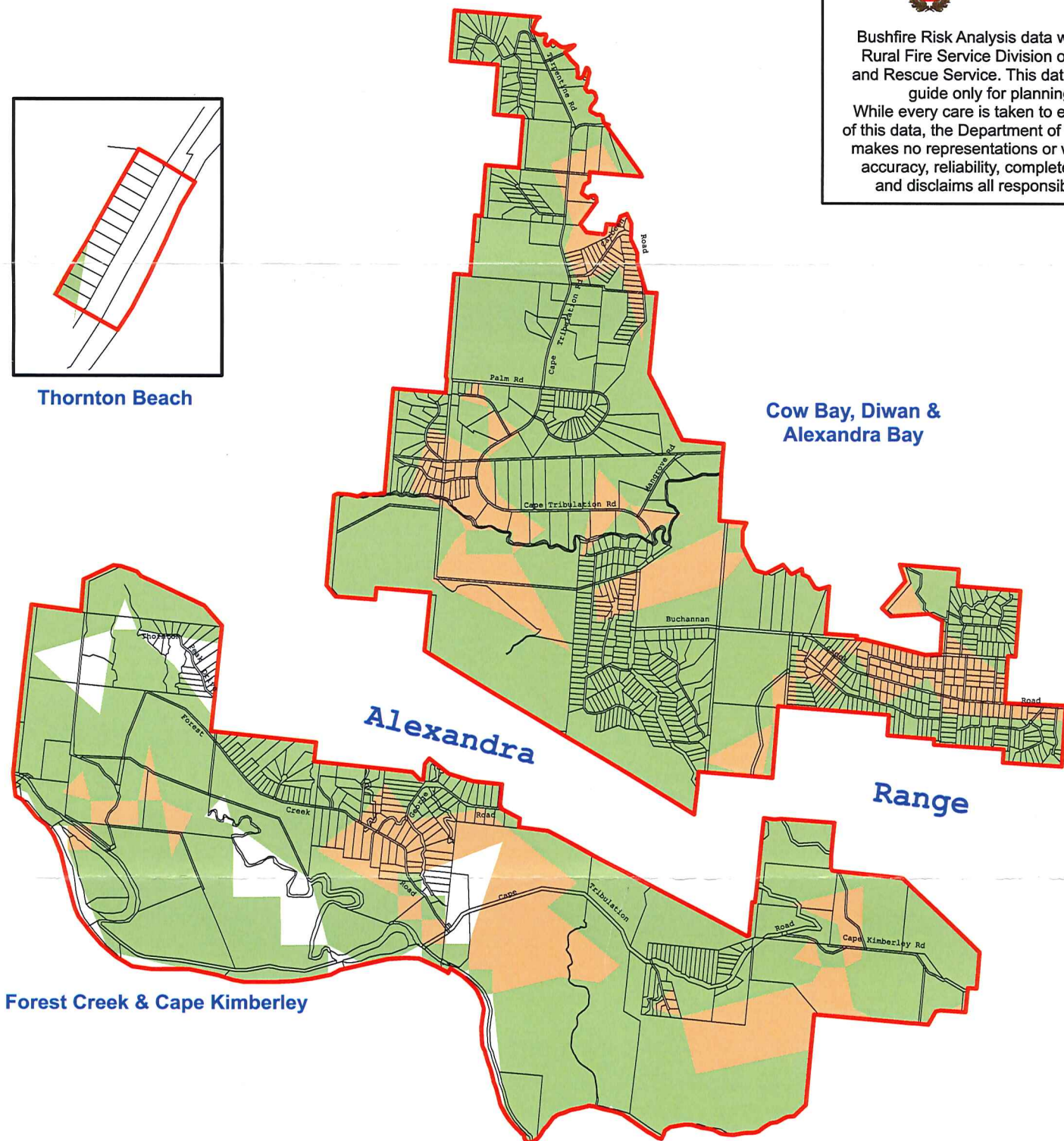
BUSHFIRE RISK ANALYSIS

- Low Risk Hazard
- Medium Risk Hazard
- High Risk Hazard



Thornton Beach

 
 Bushfire Risk Analysis data was supplied by the Rural Fire Service Division of Queensland Fire and Rescue Service. This data is to be used as a guide only for planning purposes. While every care is taken to ensure the accuracy of this data, the Department of Emergency Services makes no representations or warranties about its accuracy, reliability, completeness or suitability and disclaims all responsibility and liability.



Douglas Shire Council

Overlay - Natural Hazards
 Settlement Areas North of the Daintree River Locality



DOUGLAS SHIRE COUNCIL
 This is and shall remain the property of the Douglas Shire Council. Using or copying this document or any part of it without specific authorization is absolutely prohibited.
NOT TO SCALE
 P.O. Box 357 Tel: (07) 4099 9450
 Mossman, Qld., 4873 Fax: (07) 4098 2902



Date: August 2006
 Author: GDK
 Map No. **S5**

THIS PAGE SHOULD BE BLANK