

## **5.2. AMENDMENT DECLARATION OF SEWER AND WATER SERVICE AREAS WITHIN DOUGLAS SHIRE - FEB 2022**

**REPORT AUTHOR** Peter White, Acting Manager Water and Wastewater

**MANAGER** Rachel Brophy, Chief Executive Officer

**DEPARTMENT** Water and Wastewater

### **RECOMMENDATION**

**That Council resolves to:**

- 1. Declare that Douglas Shire Council is the service provider for the provision of reticulated water and sewerage services within Douglas Shire;**
- 2. Declare the revised maps attached indicate the service areas within the coloured boundary (*relevant area*) for reticulated water and sewerage within Douglas Shire.**

---

### **EXECUTIVE SUMMARY**

Douglas Shire Council acts as the local government entity supplying water and sewerage services in part of the local government area. Under the *Water Supply (Safety and Reliability) Act 2008*, the Council is required to declare and update the relevant reticulated water and sewerage service areas.

Declaration of service areas provide the basis for a guarantee of connection for all premises in the service area. Additionally, the declared service areas enable service providers to recover reasonable costs from customers for ensuring their networks are designed for and can deal with the service requirement of all premises in the service area.

### **BACKGROUND**

On 1 July 2019, *The Water Supply (Safety and Reliability) Act 2008* (the Act) was amended. One of the amendments made was the mandatory declaration of service areas (for reticulated water and/or sewerage), through Council resolution, for service providers. Before this amendment to the Act, the service area declaration was voluntary.

Council first adopted the declared water and sewer service areas at Ordinary Council Meeting dated 11 February 2020. Since then, the Water and Wastewater team have revised the declared water and sewerage network area boundaries within Douglas Shire Council (see attachments 5.1.1, 5.1.2 and 5.1.3).

A declaration of service area is required if a local government supplies a reticulated water service or sewerage service in all or part of the local government area (a relevant area). By resolution the local government must make this declaration. The declaration must be published and a copy given to Department of Regional Development, Manufacturing and Water (DRDMW). After the declaration, the local government must, as soon as practicable, also produce a map which details the service area boundaries for water and/or sewerage services and identify the location of the service providers' infrastructure.

Boundary maps were developed by identifying properties that are currently subject to water and sewer rates. This data was then mapped and the boundaries were created from careful analysis of every parcel of land, which was a complex process.

## COMMENTS

The Water and Wastewater team have revised both the declared water and sewerage network service area boundaries. The revision of the water and sewerage network service area was required in order to include two parcels of land. The water network service area in Newell Beach, parcel number 11485 and the water and sewerage network service for the new Craiglie subdivision, parcel number 4973. The updated maps attached (5.1.1, 5.1.2 and 5.1.3) reflect these revisions.

## PROPOSAL

That Council resolves to:

1. Declare that Douglas Shire Council is the service provider for the provision of reticulated water and sewerage services within Douglas Shire;
2. Declare the revised maps attached indicate the service areas within the coloured boundary (*relevant area*) for reticulated water and sewerage within Douglas Shire.

## FINANCIAL/RESOURCE IMPLICATIONS

The declared service areas enable water and sewer service providers to recover reasonable costs from customers to ensure the service provider's network is designed for and can deal with the service requirement of all premises in the area.

## RISK MANAGEMENT IMPLICATIONS

Nil

## SUSTAINABILITY IMPLICATIONS

**Economic:** Cost recovery

**Environmental:** Nil

**Social:** Nil

## CORPORATE/OPERATIONAL PLAN, POLICY REFERENCE

This report has been prepared in accordance with the following:

### Corporate Plan 2019-2024 Initiatives:

#### Theme 3 - Leading Environmental Stewardship

Our visitors and residents deeply value the unparalleled environment in which we live. We recognise our responsibility in protecting and preserving our natural world for generations to come. We understand the strong link between the environment and the economy: they are interdependent.

Douglas Shire will be at the forefront of environmental protection by developing strategies, setting policies, and working with all stakeholders to become the envy of and to inspire locations across Australia and the World.

**Goal 3** - *We will continue to build water infrastructure so that the Douglas Shire may enjoy water security and water quality.*

## COUNCIL'S ROLE

Council can play a number of different roles in certain circumstances and it is important to be clear about which role is appropriate for a specific purpose or circumstance. The implementation of actions will be a collective effort and Council's involvement will vary from information only through to full responsibility for delivery.

The following areas outline where Council has a clear responsibility to act:

<b>Builder/Owner</b>	Council makes a significant investment every year in the infrastructure that underpins the Shire through its capital works program. Council will manage its assets with appropriate frameworks and deliver its projects through robust project management.
<b>Information Provider</b>	Council provides the community with important information on services, events, policies, rules, strategies, and any other relevant data that helps the community to stay informed. In performing this role, Council seeks to be open and transparent.

## CONSULTATION

**Internal:** Water, Wastewater, GIS Officer

**External:** Nil

## COMMUNITY ENGAGEMENT

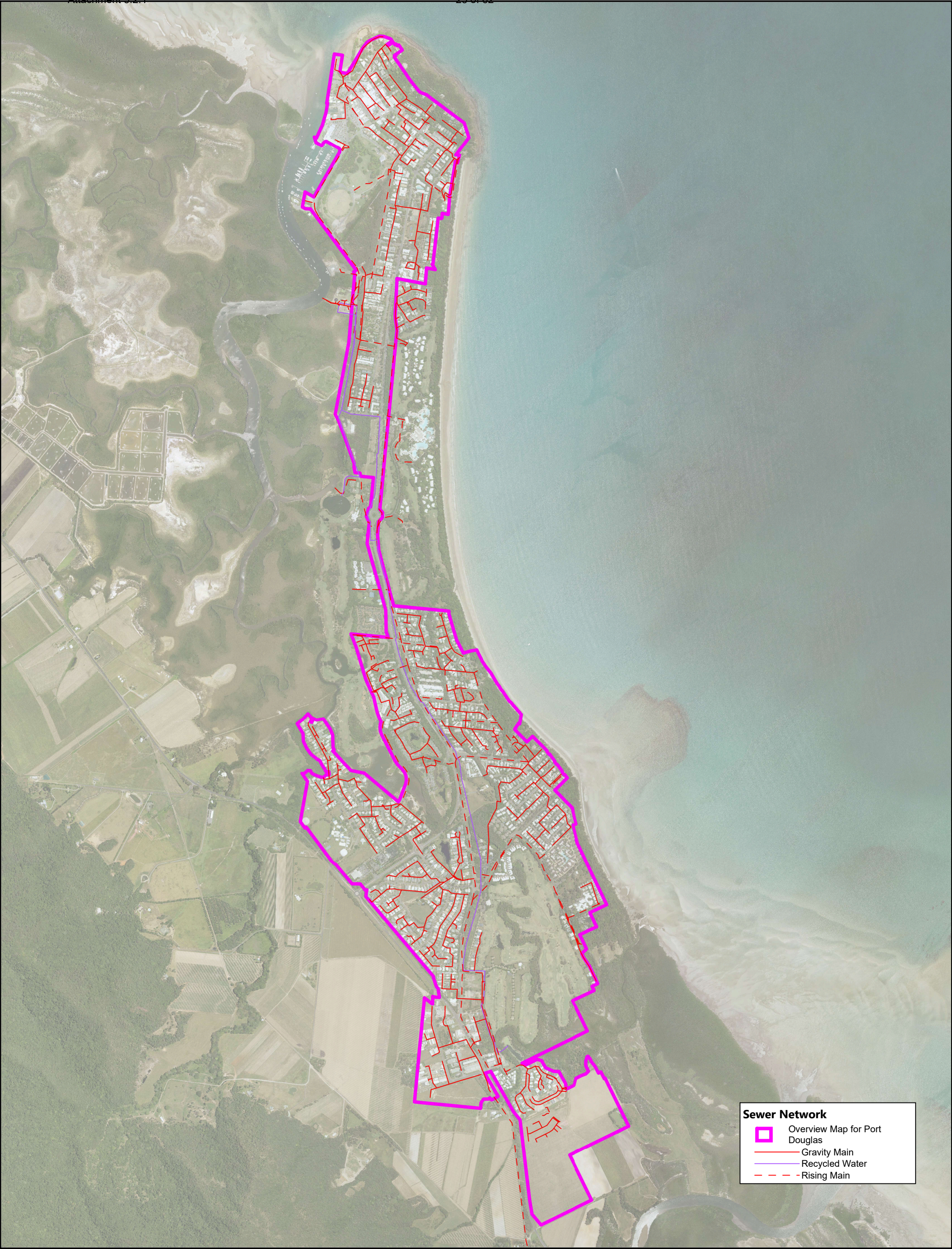
Nil

## ATTACHMENTS

1. Declared sewer service area - Port Douglas Sewer Service Area [5.2.1 - 1 page]
2. Declared water service area - Mossman Water Service Area [5.2.2 - 1 page]
3. Declared water service area - Port Douglas and Mowbray Water Service Area [5.2.3 - 1 page]



# PORT DOUGLAS SEWER NETWORK



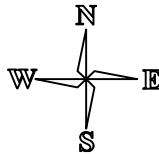
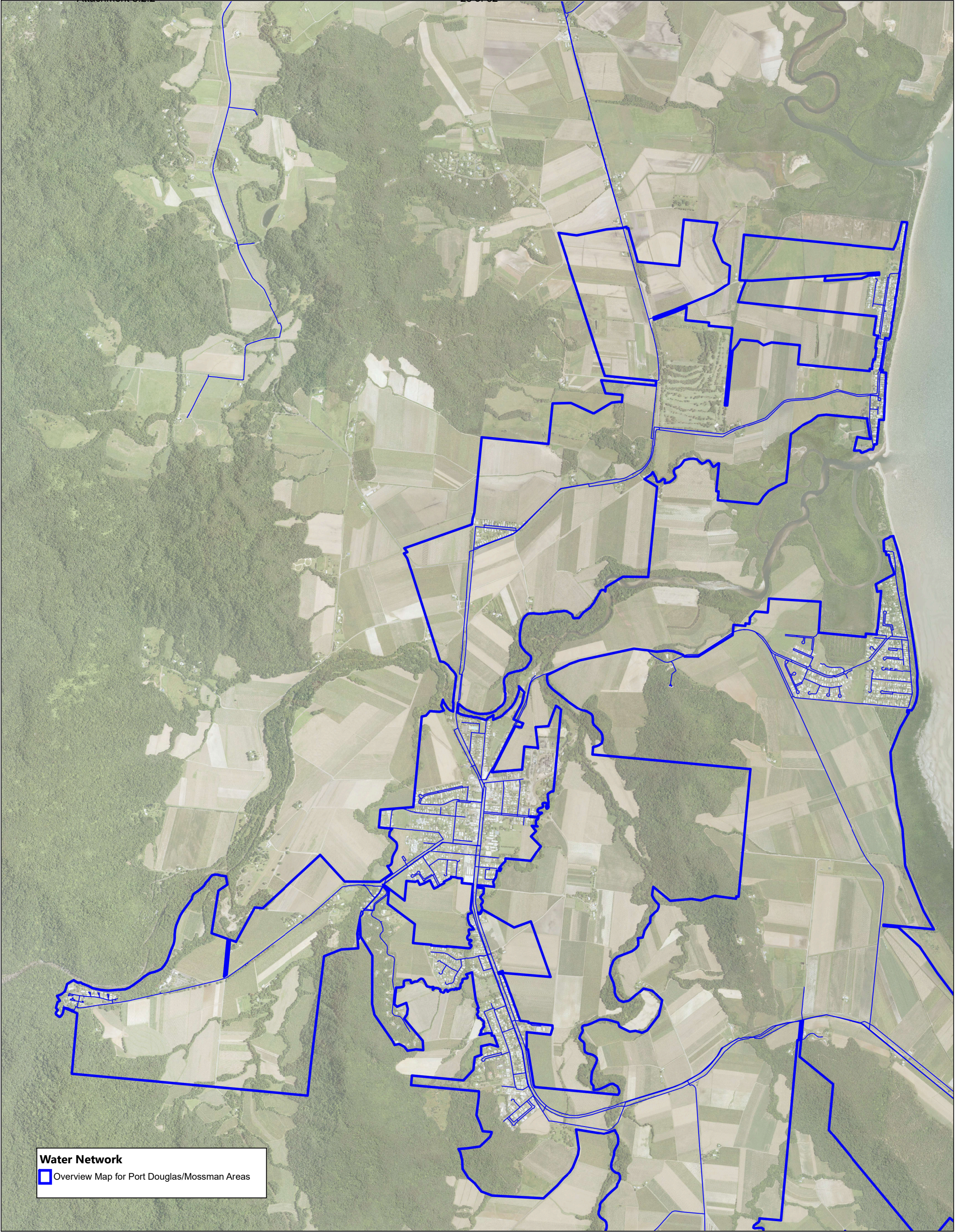
**Sewer Network**

- Overview Map for Port Douglas
- Gravity Main
- Recycled Water
- Rising Main





# MOSSMAN WATER NETWORK

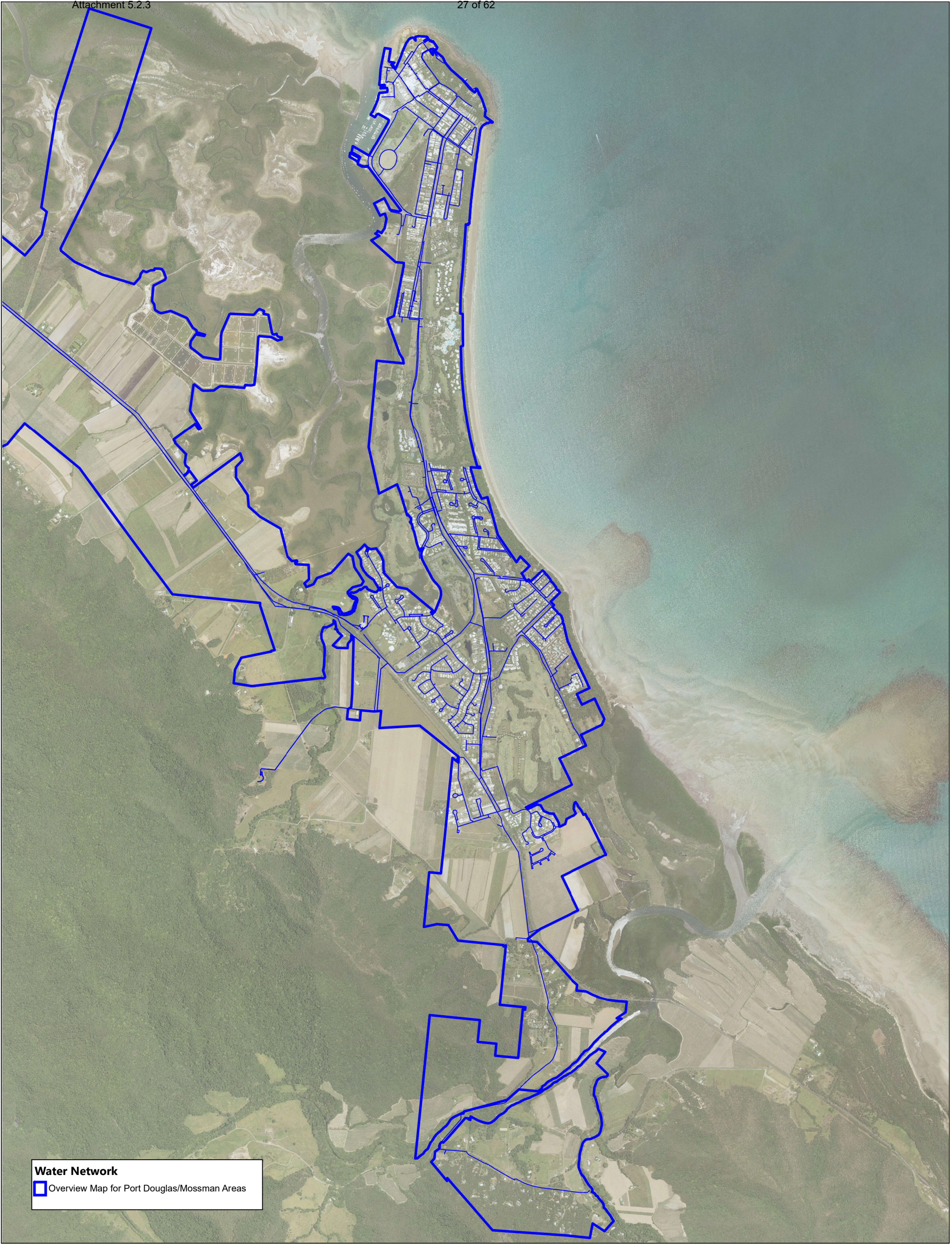




# PORT DOUGLAS AND MOWBRAY WATER NETWORK

Attachment 5.2.3

27 of 62



## Water Network

Overview Map for Port Douglas/Mossman Areas

©2019 Douglas Shire Council (DSC). Based on or contains data provided by DSC and the State of Queensland Department of Natural Resources & Mines (NR&M) [2019]. In consideration of these agencies permitting use of this data you acknowledge and agree that these agencies give no warranty in relation to the data (including accuracy, reliability, completeness, currency or suitability) and accept no liability (including without limitation, liability in negligence) for any loss, damage or costs (including consequential damage) relating to any use of the data. Data must not be used for direct marketing or be used in breach of the privacy laws.

Scale 1cm = ( 280m ) at A3

Map Grid of Australia  
Zone 55 (GDA94)

